



# Z5340

## 20" x 18" Wall Hung Lavatory

TAG \_\_\_\_\_

### Architectural/Engineering Specification:

20" x 18" vitreous china wall hung lavatory. Provided with hanger plate and holes for concealed arm carrier systems.

### Product Features:

- 20" [508 mm] x 18" [457 mm]
- Vitreous china
- Faucet holes for single, 4", or 8" centers
- Available with right or left side soap hole punching (Single centers only)
- Wall hung lavatory provided with wall hanger or for use with concealed arm carrier systems
- Front overflow
- Waste: 1-1/4" O.D.
- Depth: 6-3/8"
- Shipping Weight: 42 lbs.

### Suffix Options:

- LS Left Side Soap Hole (Z5341 only)
- RS Right Side Soap Hole (Z5341 only)
- N Less Front Overflow Hole

### Recommended Trim:

- Z8743-PC Grid Strainer
- Z8700 Series P-Trap
- Z8800 Series Top with Flexible Supplies
- Z8946-1-NT ADA Trap, Stop, and Supply Protectors

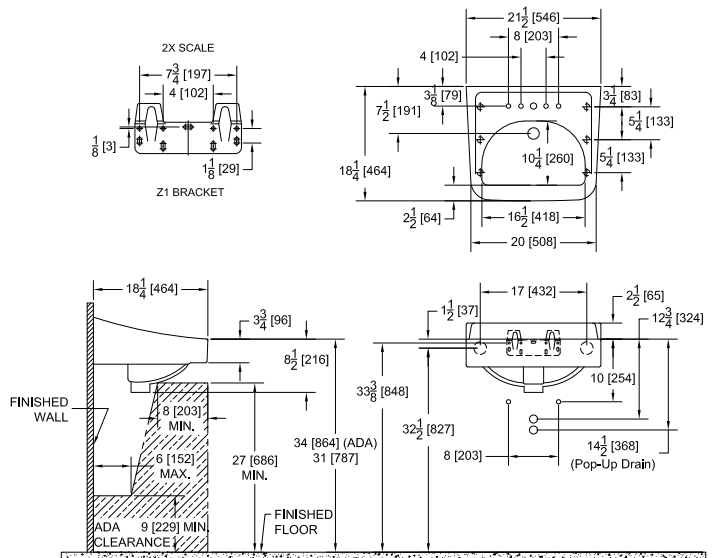
### Optional Trim:

- Z8746-PC ADA Grid Strainer
- Z8946-3-NT ADA Trap, Stop, and Supply Protectors for Offset Grid Strainer



### Configurations:

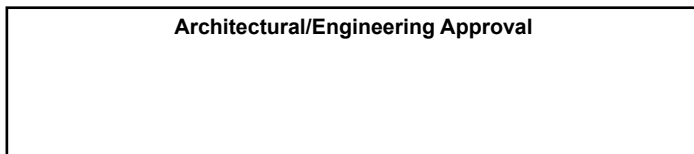
- Z5341 Lavatory with single faucet hole
- Z5344 Lavatory with 4" center faucet holes
- Z5348 Lavatory with 8" center faucet holes



### Rough-in/Overview dimensions for Z5340 Series

- Z5341 Lavatory with single hole faucet
- Z5344 Lavatory with 4" center faucet holes
- Z5348 Lavatory with 8" center faucet holes

See Zurn One Systems for suggested packages.



The information contained in this document is subject to change without notice. Please contact Zurn for most up to date information.

### Compliance and Certification:

- ADA Compliant



Meets the American Disabilities Guidelines and ANSI A117.1 requirements when installed 34" [84mm] from finished floor. Fixture dimensions meet ASME A112.19.2/CSA B45.1 requirements. In Canada - Consult local codes and standards.

