

FEATURES:

-

STOCK FINISHES:

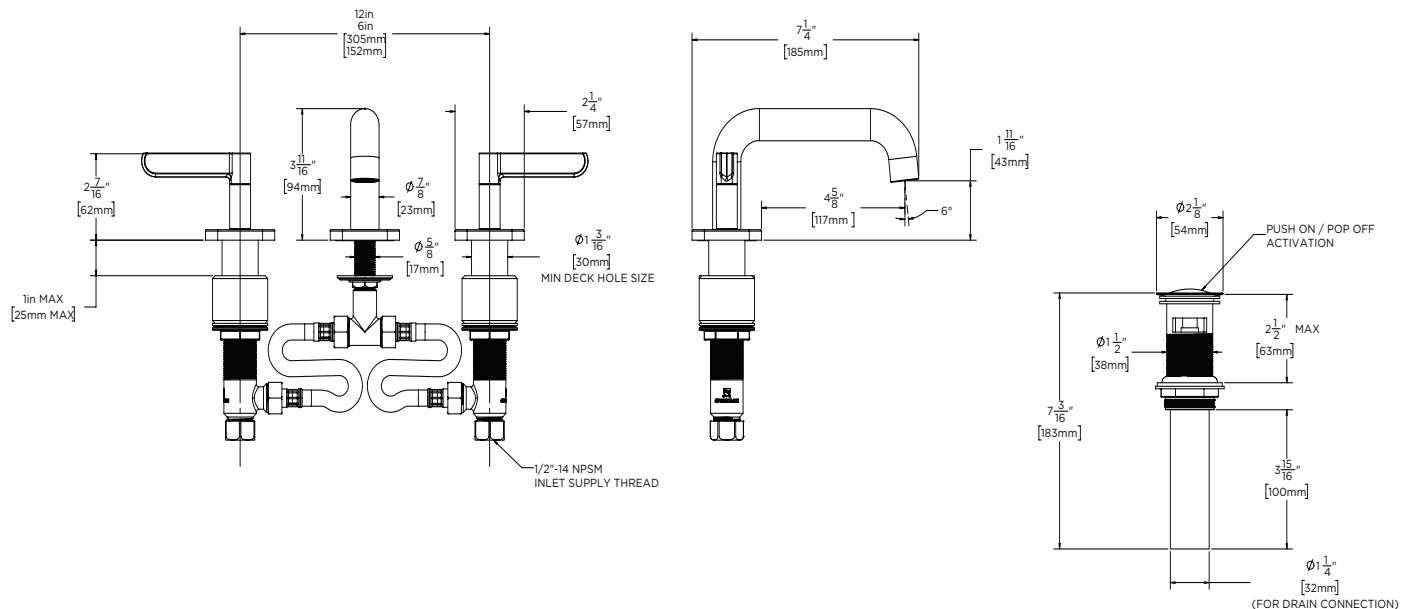


STANDARDS:

- ASME A112.18.1/CSA B125.1 certified
- NSF/ANSI 61 certified
- NSF 372 certified
- WaterSense certified
- ADA compliant

WARRANTY:

- Limited Lifetime Warranty (consumer)
- 5 Year Limited Warranty (commercial)



Architect/Engineer Approval Space:

P: 800-537-2107
F: 800-977-2747
W: WWW.SPEAKMAN.COM
R: 01-OCTOBER 2022