

SPEAKMAN®

SEF-TW

Installation, Maintenance & Operation Instructions

EYESAVER THERMOSTATIC MIXING VALVE KIT

DESCRIPTION

The SEF-TW is a thermostatic mixing valve kit for supplying tepid water to the Speakman SEF line of Eyewash - Faucets. The thermostatic mixing valve attaches directly to the SEF Eyewash-Faucet with no additional plumbing required.

SPECIFICATIONS

THERMOSTATIC MIXING VALVE: Speakman STW-370

FINISH: Rough brass (Mixing Valve)

EYEWASH FLOW RATE: SEF-9000/9200 - 2.2 GPM at 40 psi flowing

SEF-1800 - 2.5 GPM at 35 psi flowing

PRESSURE REQUIREMENT: SEF-9000/9200 - 40 psi. flowing at the service sink inlets at full flow.

SEF-1800 and SEF-18XY - 35 psi flowing with the faucet at full flow.

SHIPPING WEIGHT: 11.2 LBS.

INSTALLATION INSTRUCTIONS FOR SEF-9000/9200

IMPORTANT- AFTER INSTALLING SERVICE SINK FITTING, INSTALL THE THERMOSTATIC MIXING VALVE BEFORE INSTALLING THE EYEWASH UNIT. ON INSTALLATIONS THAT ALREADY HAVE THE EYEWASH UNIT INSTALLED, IT MAY BE NECESSARY TO RELOCATE IT, SO THAT THE MIXING VALVE CAN BE PROPERLY INSTALLED. USE THREAD SEALANT ON ALL PIPE THREAD CONNECTIONS.

NOTE- SEE THE SEF-9000/9200 ROUGHING-IN DIAGRAM ON PAGE 2 FOR ADDITIONAL DETAILS

Adding Mixing Valve to New SEF-9000/9000-FM Unit (SEF-9200/9200-FM):

- a. If applicable, install the service sink fitting by using the installation instruction sheet located in the sink fitting box. Keep in mind that the thermostatic mixing valve will be mounted alongside of the sink fitting.
- b. With the hot & cold supplies for the sink fitting turned off, remove both hot & cold stop spindles/nuts from the sink fitting, which are located on the bottom side of the sink fitting.
- c. Unbox the (2) housing assemblies. Lubricate the housing O-ring with O-ring lube. After cleaning the seat, thread the Stop Adapter into the Cold Supply Stop location of Faucet. Wrench tighten. Tighten the Threaded Insert to create a seal between the Sink Fitting and the Adapter using a 5/16" Allen Wrench in the base of the Adapter. (See Roughing-In on page 2). Repeat for the hot side. Assemble the (2) bushings to the housings and carefully tighten. Now go to "All Installations" on page 2.

Adding Mixing Valve to Existing Installed SEF-9000 Unit (SEF-9200):

- a. With the hot & cold supplies for the sink fitting turned off, remove the hot stop spindle/nut from the sink fitting, which is located on the bottom side of the sink fitting. Unscrew eyewash hose from the vacuum breaker on sink fitting. Remove vacuum breaker from the cold side housing. Note that this connection has been thread sealed.
- b. Unbox the housing assembly. Lubricate the housing O-ring with O-ring lube. After cleaning the seat, thread the Stop Adapter into the Hot Supply Stop location of Faucet. Wrench tighten. Tighten the Threaded Insert to create a seal between the Sink Fitting and the Adapter using a 5/16" Allen Wrench in the base of the Adapter. Assemble the (2) bushings to the housings and carefully tighten. Now go to "All Installations" on page 2.

SPEAKMAN®

400 Anchor Mill Rd. New Castle, DE 19720 Phone: 800-537-2107 Fax: 800-977-2747

08/07/18

www.speakman.com

92-SEF-TW-09

Adding Mixing Valve to Existing Installed SEF-9000-FM Unit (SEF-9200-FM):

- With the hot & cold supplies for the sink fitting turned off, remove hot stop spindle/nut from the sink fitting, which are located on the bottom side of the sink fitting. Unscrew the eyewash hose from the cold housing on the sink fitting.
- Unbox the housing assembly. Lubricate the housing O-ring with O-ring lube. After cleaning the seat, thread the Stop Adapter into the Hot Supply Stop location of Faucet. Wrench tighten. Tighten the Threaded Insert to create a seal between the Sink Fitting and the Adapter using a 5/16" Allen Wrench in the base of the Adapter. Assemble the bushing to the hot housing and carefully tighten. Now go to "All Installations" below.

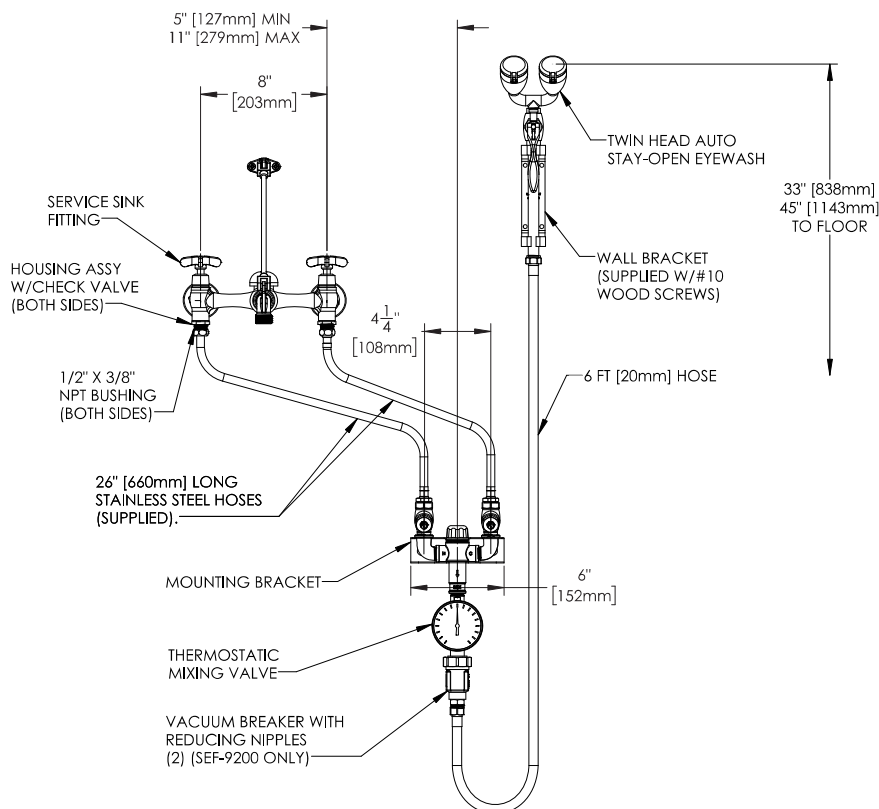
All Installations:

- If eyewash unit has an in-line vacuum breaker, assemble it to the mixing valve outlet using the (2) reducing nipples on both side of the vacuum breaker. If eyewash unit does not have a vacuum breaker, assemble the pipe nipple to the mixing valve outlet. Tighten all of the connections.
- Mount the thermostatic mixing valve to the wall alongside the sink fitting (See Roughing-In). Fasten valve to the wall using the wall bracket (supplied). Connect the (2) supply hoses (male end) to the mixing valve tee inlets and wrench tighten. Connect the other end of the hoses (with fiber washer) to the sink fitting housings, making sure the hot is to hot & the cold is too cold. Wrench tighten.
- Screw the eyewash assembly hose onto the outlet of the mixing valve. Hand tighten, then wrench tighten 1/2 -1 turn. Place the eyewash valve assembly into the eyewash bracket (If applicable).

NOTE- REFER TO THE SEPARATE IOM SHEET LOCATED IN THE MIXING VALVE BOX FOR ADJUSTMENT, TESTING, & MAINTENANCE INSTRUCTIONS.

- Go to Step 6 of the SEF-9200 Installation Instruction Sheet at this time, if applicable.

ROUGHING-IN FOR SEF-9000/9200 WITH SEF-TW



NOTES:

- ALL DIMENSIONS ARE IN INCHES [MILLIMETERS] UNLESS OTHERWISE SPECIFIED AND ARE SUBJECT TO CHANGE.
- MIXING VALVE CAN BE HARD PIPED WITH UNIONS.

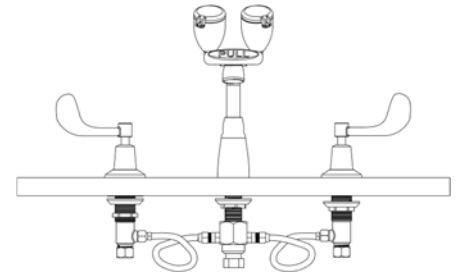
SPEAKMAN®

INSTALLATION INSTRUCTION FOR SEF-1800 MODELS

Adding SEF-TW to Existing Installed SEF-1800 Models

- Turn off hot and cold supply water before starting any work.
- Disconnect the hot and cold supply lines from the unit.
- Remove the tee from the tepid water supply inlet which supplied the eyewash and the cold water valve.
- The unit should now look like the figure to the right.
- Go to 'All Installations' step.

SEF-1800

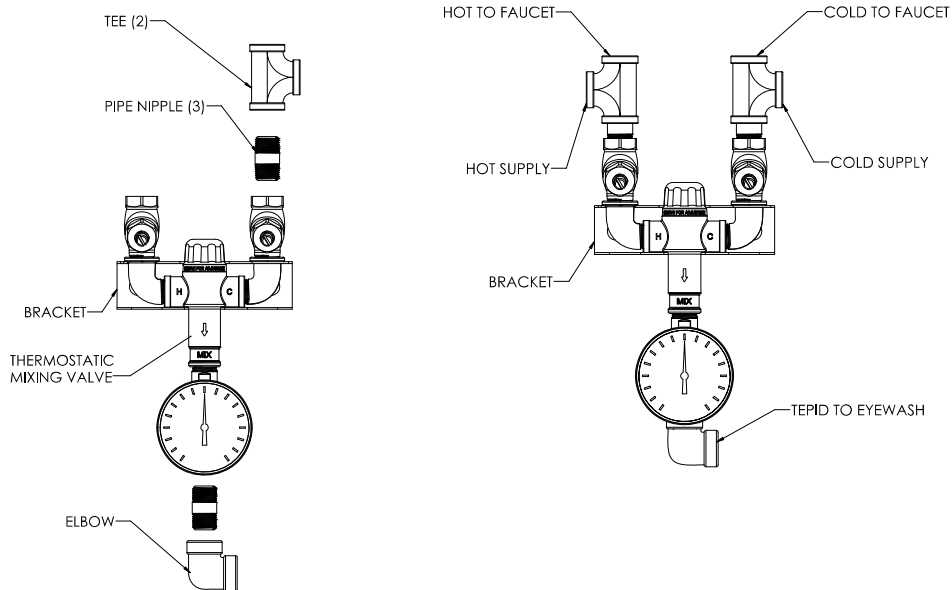


Adding SEF-TW to New Installation of SEF-1800 Models

- Follow the SEF-1800 product installation sheets for a 'Dedicated Tepid Water Supply' Installation.
- The unit should now look like the figure to the right.
- Go to 'All Installations' step.

All Installations:

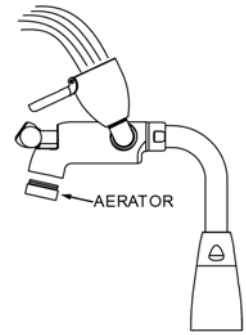
- Attach the tees and pipe nipples to the hot and cold inlet of the thermostatic mixing valve. Then, attach the elbow and pipe nipple to the outlet of the thermostatic mixing valve.
- Use Teflon tape on all threaded connections.
- See the installation and maintenance manual provided for the STW-370 Emergency Eye Wash Valve for the required installation recommendations.
- The drawing on page 3 provides the roughing in dimensions for mounting the unit. The valve should be mounted less than 18" below the counter. This allows enough clearance for the supply hoses to reach the inlets. Verify the supply hoses reach the connections before mounting the valve.
- Mount the thermostatic mixing valve to the wall and fasten the valve to the wall using the wall bracket (supplied).
- Connect the (2) supply hoses (male end) to the mixing valve tee and wrench tighten. Connect the other end of the hoses (with fiber washer) to the widespread valve bodies, making sure the hot is to hot & the cold is too cold and wrench tighten.
- Connect the center outlet of the tepid water supply valve to the eyewash inlet using supplied 36" long hose and wrench tight.
- Connect the hot and cold water supply lines to the tees on the tepid water supply valve.



SPEAKMAN®

Unit Flushing:

- After the assembly is complete, turn the hot and cold water supplies on and check for leaks.
- Activate the faucet to flush both the hot and cold sides of fixture. Check all connections for leaks.
- Install the aerator into the faucet outlet.
- Now activate faucet and then activate the eyewash by pulling the handle and assure proper spray formation and no leaks.



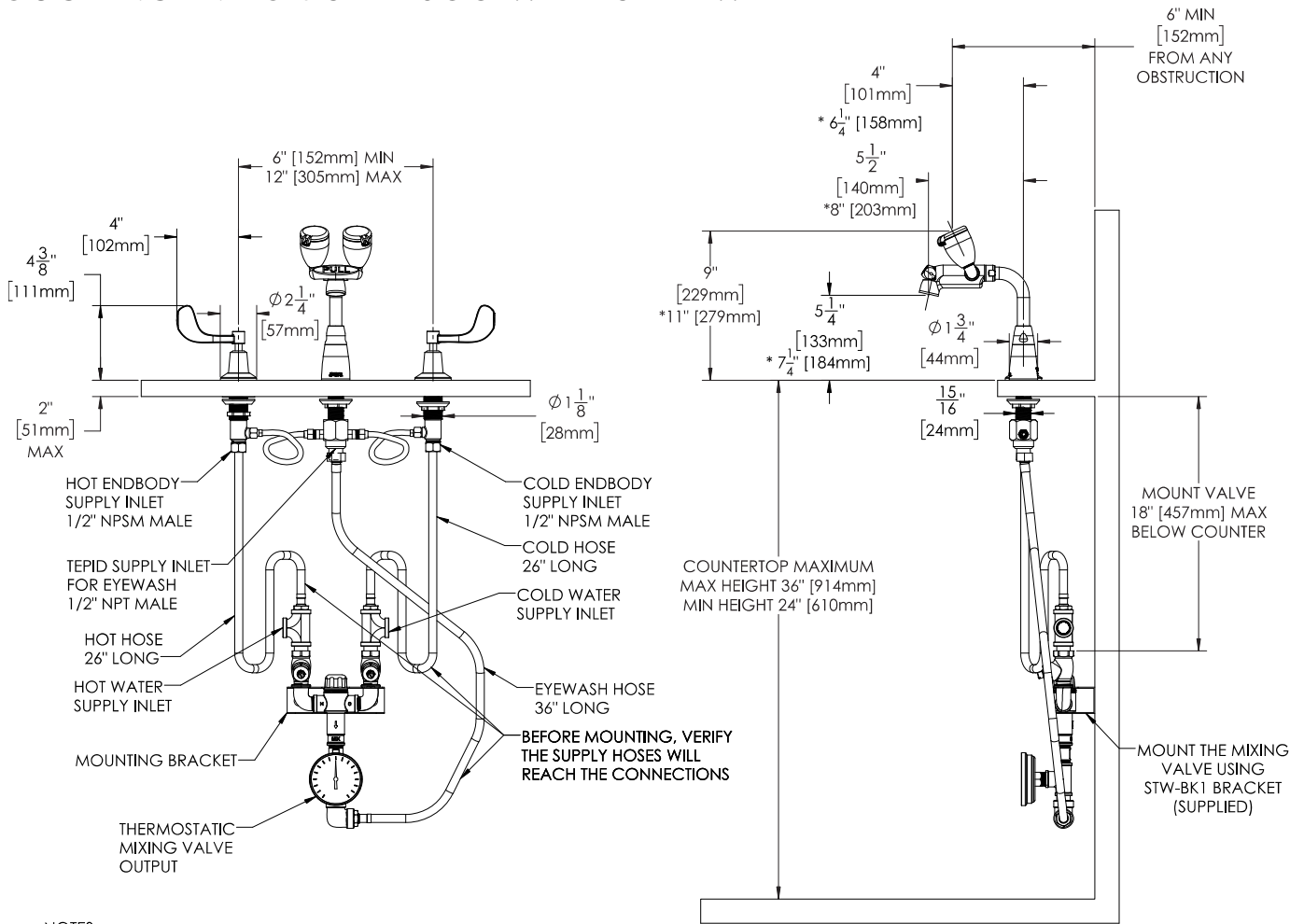
***Adjusting the Tepid Water Supply Temperature:**

ANSI Z358.1 requires that the delivered flushing fluid temperature shall be tepid. Also, in circumstances where chemical reaction is accelerated by flushing fluid temperature, a medical advisor should be consulted for the optimum temperature of each application. Refer to the IOM sheet located in the thermostatic mixing valve box for adjustment, testing and maintenance instructions to adjust the valve to the proper temperature.

TESTING PROGRAM:

ANSI Z358.1 requires that all emergency equipment shall be tested weekly to verify proper operation and inspected annually to assure conformance with ANSI Z358.1 requirement.

ROUGHING-IN FOR SEF-1800 WITH SEF-TW



- NOTES:
- ALL DIMENSIONS ARE IN INCHES [MILLIMETERS] UNLESS OTHERWISE SPECIFIED AND ARE SUBJECT TO CHANGE.
 - BE SURE TO KEEP THE MIXING VALVE, STW-370 AS CLOSE TO THE CENTER OF THE FAUCET BODY AS POSSIBLE.
 - * DIMENSIONS FOR OPTIONAL 8" FAUCET SPOUT.

