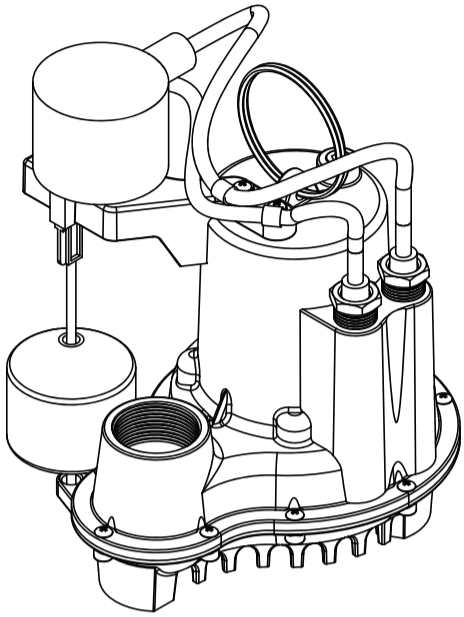


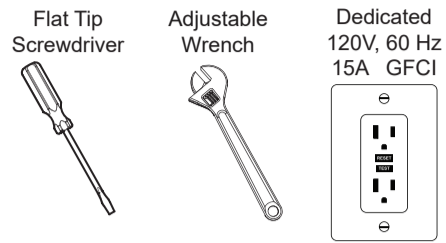
INSTALLATION INSTRUCTIONS

SP-8012 1/2 HP Sump Pump



92-SP-8012-01

TOOLS & SUPPLIES NEEDED



IMPORTANT

SAFETY TIPS:

Be sure to read and understand all instructions before beginning installation. Inspect all connections after installation. Be sure to wear proper eye protection.

SHOCK HAZARD:

Turn OFF electrical power at Fuse Box or Circuit Breaker before performing any work!

⚠ WARNING ⚠

RISK OF ELECTRIC SHOCK The pump is supplied with a grounding conductor and grounding-type attachment plug. To reduce the risk of electric shock, install only on a circuit protected by ground-fault circuit-interrupter. Always disconnect the pump from the power source before handling or making adjustments. Always wear rubber boots when servicing in wet areas. Make sure the pump power source is a separately fused, grounded 3-wire type receptacle of 15-amp capacity. **DO NOT REMOVE GROUND PRONG OR PLUG. DO NOT USE AN EXTENSION CORD.** Check to make sure installation is in accordance with the National Electric Code and all applicable local codes. Installation and servicing are to be conducted by qualified personnel.

- **DO NOT** pump flammable liquids.
- **DO NOT** use around explosive materials.
- **DO NOT** handle unit with wet hands or while standing in water.
- **DO NOT** lift the pump by the power cord.
- **DO NOT** handle or carry the pump by the power cord. Use the handle, or rope.
- **DO NOT** connect to any voltage other than that listed on the nameplate.
- **DO NOT** use in water over 104°F (40°C).
- **DO NOT** modify the pump in any way.
- **DO NOT** expose pump or discharge to freezing temperatures.
- **DO NOT** use this product to pump salt water or brine. Use with salt water or brine will void the warranty. Pump water only.

The sump pit must be a minimum of 12" diameter x 10" depth for Vertical switch models usage.

- Do keep the pump inlet screen clear.

The pump **MUST** be placed on a solid foundation, such as a brick, stone, or other flat heavy surface. Do not place the pump directly on the ground in sandy or rocky surfaces. Earth, sand, or gravel that enters the pump would damage the impeller of the sump and cause flooding. Sand or mud-choked pumps can be back-flushed clean.

- Extended usage of the pump in a partially submerged or non-submerged situation may cause the pump to overheat due to lack of heat dissipation from the water. If this occurs, the pump will shut itself off until the motor cools to its normal temperature. Repeated overheating may cause damage to the pump.

NEED HELP?
For additional assistance or service please contact:



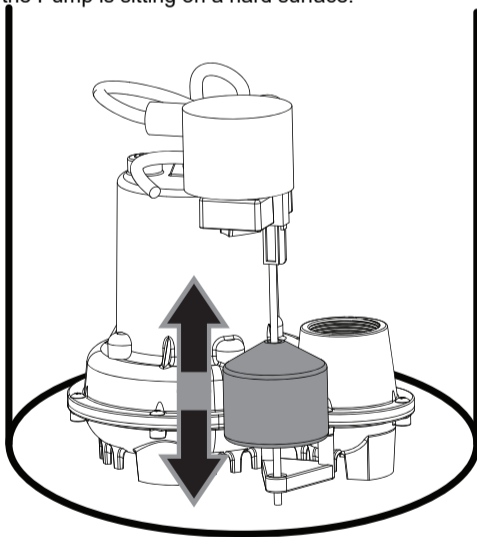
800-537-2107



www.speakman.com

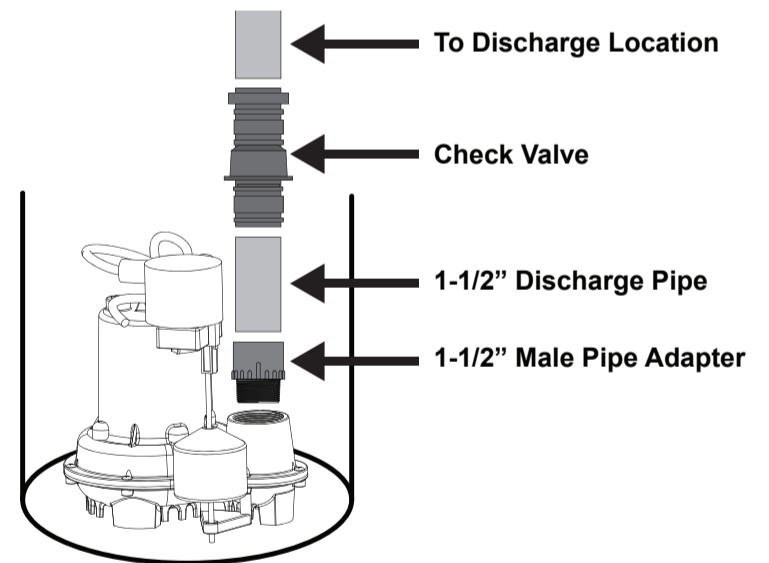
POSITION PUMP

- 1 Position your Pump in the sump and be sure that the Float Switch moves freely without touching the wall of the sump or other obstructions. Be sure the incoming water does not interfere with Float Switch. Ensure the Pump is sitting on a hard surface.



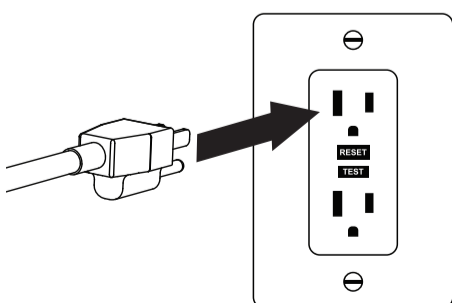
INSTALL DISCHARGE LINE

- 2 Install a 1-1/2" Male Pipe Adapter, 1-1/2" Discharge Pipe, and Check Valve in accordance to code.



PLUG IN

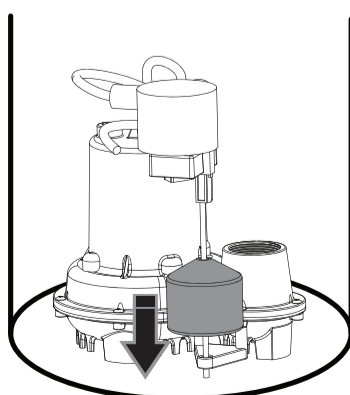
- 3 Plug Power Cord into a properly grounded GFCI outlet. A dedicated AC circuit of 120v 15A is required.



Verify that the Power Cord routing does not interfere with the Float Switch.

VERIFY FLOAT SWITCH POSITION

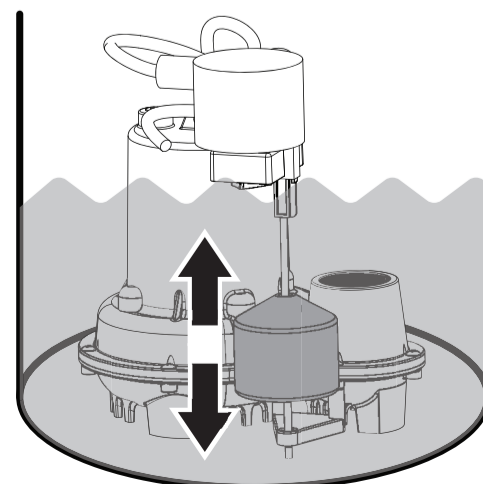
- 4 With the Pump plugged in and the sump dry, the Pump should not activate. If needed, adjust Float Level by repositioning the rubber bushing on the bottom of the Float Rod.



Verify that the Power Cord routing does not interfere with the Float Switch.

TEST FOR PROPER OPERATION

- 5 Once installation is complete, check the functionality by filling the sump with water using a bucket or hose. The unit should activate, pump the water from the sump, and turn off once the water level reaches the set point of the float. If needed, adjust Float Level by repositioning the rubber bushing on the bottom of the Float Rod.



TROUBLESHOOTING

Issue: Pump does not run.

Cause:

- Circuit breaker or fuse has tripped.
- Water level in sump has not reached turn-on level as indicated in installation drawing.
- Float may be stuck. It should operate freely in basin.

Issue: Pump runs but does not deliver water.

Cause:

- Check valve is installed backwards. Arrow on valve should point in direction of flow.
- Discharge shut-off valve (if used) may be closed.
- Impeller or volute openings are fully or partially clogged. Remove pump and clean.
- Pump is air-locked. Start and stop several times by plugging and unplugging cord. Check for clogged vent hole in pump case.
- Inlet holes in pump base are clogged. Remove pump and clean the openings.
- Vertical pumping distance is too high. Reduce distance or change the discharge fittings of the pump.

Issue: Pump runs and pumps out sump, but does not stop.

Cause:

- Float is stuck in up position. Be sure float operates freely in basin.
- Defective float switch. Replace with float switch.

Issue: Pump runs but delivers only a small amount of water.

Cause:

- Pump is air-locked. Start and stop several times by plugging and unplugging cord. Check for clogged vent hole in pump case.
- Impeller or volute openings are fully or partially clogged. Remove pump and clean.
- Pump impeller is partially clogged with tar or paint, causing motor to run slow and overload. Remove pump and clean.

Issue: Circuit breaker trips or fuse blows when pump starts.

Cause:

- Pump impeller is partially clogged with tar or paint, causing motor to run slow and overload. Remove pump and clean.
- Motor stator may be defective.
- Check that circuit breaker or fuse is rated for at least 15 amps.
- Impeller or volute opening are fully or partially clogged. Remove pump and clean.

ROUGH-IN DIAGRAM

COMPLIANCE

C22.2 NO. 108-14 CLAUSE 8

SPECIFICATIONS

Power supply requirement:

120 V, 60 Hz

Motor:

1/2 HP Continuous, Permanent Split Capacitor,

Thermally Protected Amps:

4.0 A / 5.5 Amperes

Liquid Temperature Range:

32° F - 104° F (0° C - 40° C)

Circuit Requirements:

15 Amp minimum

Solids Handling:

0.425"

Discharge Size:

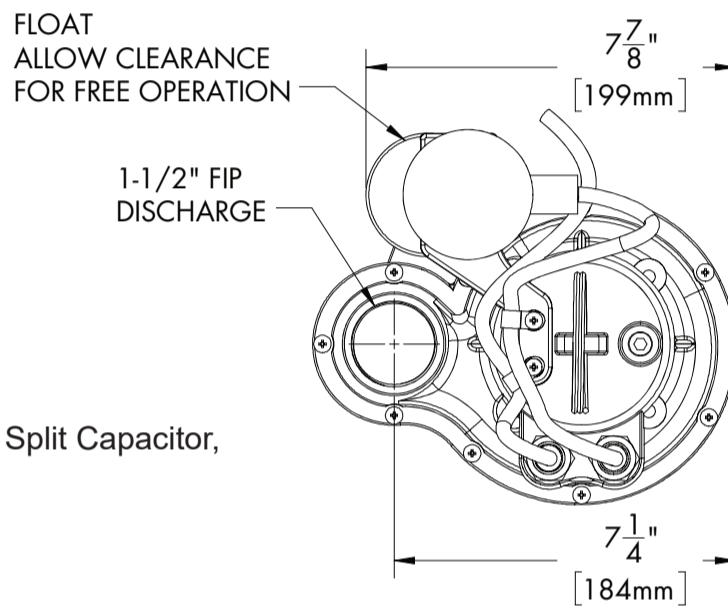
1-1/2" FIP

Outline Dimension:

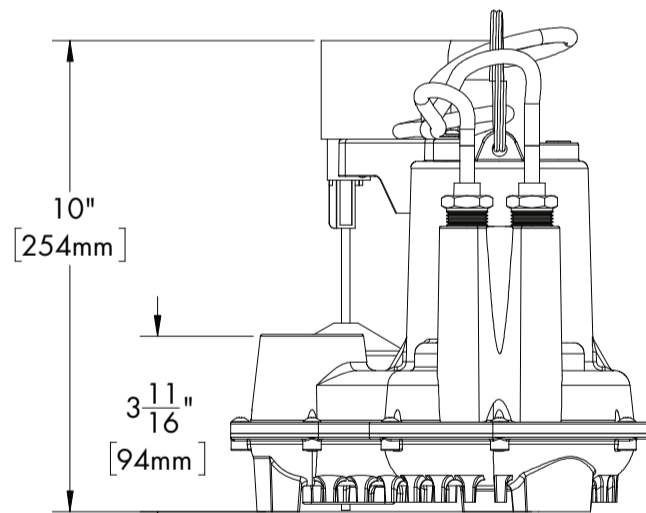
9"L x 8"W x 10"H (in)

CONNECTIONS

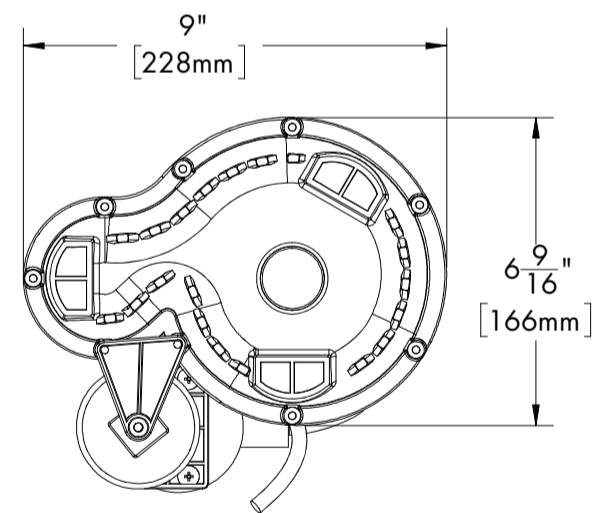
Contractor to supply necessary discharge connections.



TOP VIEW



SIDE VIEW



BOTTOM VIEW

MODEL	OUTPUT		OUTLET		PASS SOLID (in)	MAX. FLOW (GPH)	FLOW(GPH)@HEAD (FEET)					MAX. HEAD (feet)
	HP	W	MM	INCH			5	10	15	20	25	
SP-8012	1/2	400	40	1-1/2"	.425"	3560	3400	2790	2150	1600	660	30

CALIFORNIA PROPOSITION 65

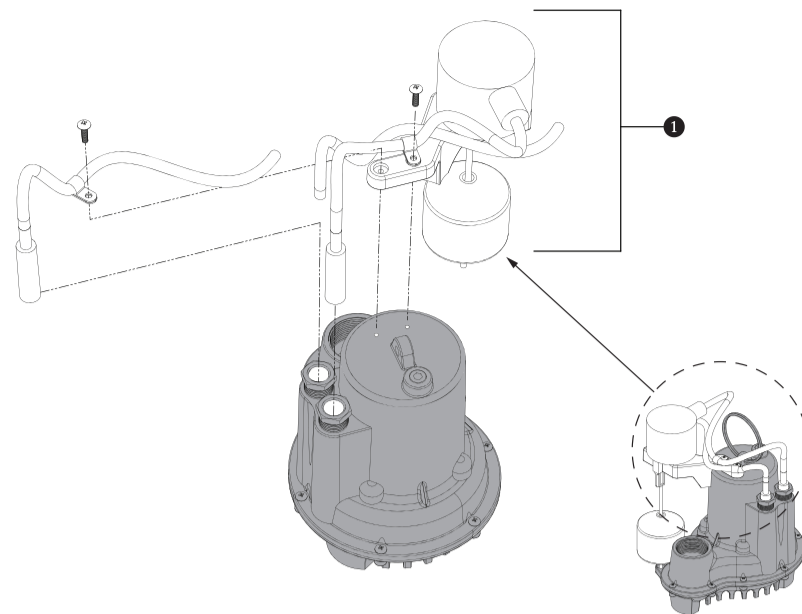


CALIFORNIA PROPOSITION 65:

WARNING: This product can expose you to chemicals including lead, which is known to the State of California to cause cancer and birth defects or other reproductive harm. For more information go to www.P65Warnings.ca.gov
Wash hands after installation, repair, or removal of this product.

REPAIR PARTS

ITEM NO.	PART NO.	DESCRIPTION
1	80749	FLOAT SWITCH REPAIR PART GROUP



PRODUCT WARRANTY

LIMITED WARRANTY:

Warrants that the products specified in this warranty are free from defects in material or workmanship of the Brand. During the time periods and subject to the terms and conditions hereinafter set forth, the Brand will repair or replace to the original user or consumer any portion of this product which proves defective due to materials or workmanship of the Brand. At all times the Brand shall have and possess the sole right and option to determine whether to repair or replace defective equipment, parts, or components. The Brand has the option to inspect any product returned under warranty to confirm that the warranty applies before repair or replacement under warranty is approved. This warranty sets forth the Brand's sole obligation and purchaser's exclusive remedy for defective product. Return defective product to the place of purchase for warranty consideration.

WARRANTY PERIOD - PRODUCTS: 36 months from date of purchase by the user (No warranty on brushes, impeller or cam on models with brush-type motors and/or flex-vane impellers.) In the absence of suitable proof of the purchase date, the effective period of this warranty will begin on the product's date of manufacture.

LABOR, ETC. COSTS: The Brand shall IN NO EVENT be responsible or liable for the cost of field labor or other charges incurred by any customer in removing and/or affixing any product, part, or component thereof.

PRODUCT IMPROVEMENTS: The Brand reserves the right to change or improve its products or any portions thereof without being obligated to provide such a change or improvement for units sold and/or shipped prior to such change or improvement.

GENERAL TERMS AND CONDITIONS: This warranty shall not apply to damage due to acts of God, normal wear and tear, normal maintenance services and the parts used in connection with such service, lightning or conditions beyond the control of the Brand, nor shall it apply to products which, in the sole judgment of the Brand, have been subject to negligence, abuse, accident, misapplication, tampering, alteration; nor due to improper installation, operation, maintenance or storage; nor to excess of recommended maximums as set forth in the instructions.

Warranty will be VOID if any of the following conditions are found:

1. Product is used for purposes other than those for which it was designed and manufactured
2. Product not installed in accordance with applicable codes, ordinances, and good trade practices
3. Product connected to voltage other than indicated on nameplate
4. Pump used to circulate anything other than fresh water at approximately room temperature
5. Pump allowed to operate dry (fluid supply cut off)
6. Sealed motor housing opened or product dismantled by customer
7. Cord cut off to a length less than three feet

DISCLAIMER: Any oral statements about the product made by the seller, the Brand, the representatives, or any other parties do not constitute warranties, shall not be relied upon by the user, and are not part of the contract for sale. Seller's and Brand's only obligation, and buyer's only remedy, shall be the replacement and/or repair by the Brand of the product as described above.

NEITHER SELLER NOR THE BRAND SHALL BE LIABLE FOR ANY INJURY, LOSS OR DAMAGE, DIRECT, INCIDENTAL OR CONSEQUENTIAL (INCLUDING, BUT NOT LIMITED TO, INCIDENTAL OR CONSEQUENTIAL DAMAGES FOR LOST PROFITS, LOST SALES, INJURY TO PERSON OR PROPERTY, OR ANY OTHER INCIDENTAL OR CONSEQUENTIAL LOSS), ARISING OUT OF THE USE OR THE INABILITY TO USE THE PRODUCT, AND THE USER AGREES THAT NO OTHER REMEDY SHALL BE AVAILABLE TO IT.

Before using, the user shall determine the suitability of the product for his intended use, and user assumes all risk and liability whatsoever in connection therewith.

THE WARRANTY AND REMEDY DESCRIBED IN THIS LIMITED WARRANTY IS AN EXCLUSIVE WARRANTY AND REMEDY AND IS IN LIEU OF ANY OTHER WARRANTY OR REMEDY, EXPRESSED OR IMPLIED, WHICH OTHER WARRANTIES AND REMEDIES ARE HEREBY EXPRESSLY EXCLUDED, INCLUDING BUT NOT LIMITED TO ANY IMPLIED WARRANTY OF MERCHANTABILITY OR FITNESS FOR A PARTICULAR PURPOSE, TO THE EXTENT EITHER APPLIES TO A PRODUCT SHALL BE LIMITED IN DURATION TO THE PERIODS OF THE EXPRESSED WARRANTIES GIVEN ABOVE.

Some states and countries do not allow the exclusion or limitations on how long an implied warranty lasts or the exclusion or limitation of incidental or consequential damages, so the above exclusion or limitations may not apply to you. This warranty gives you specific legal rights, and you may also have other rights which vary from state to state and country to country