

P8080 Series

LED New Construction and Remodel • Wet Location



Specifications:

Description:

The P8080 is ideal for use in both new construction as well as remodel/retrofit. Light output is comparable to that of a typical 50W incandescent downlight, providing up to 75% energy savings. The P8080 is equipped with both Edison base adaptor and quick link connector allowing easy installation in many standard incandescent recessed housings.

Construction:

- Diffused polycarbonate lens controls direct glare from the LEDs
- Easy "Push and Twist" installation with (3) friction spring clips
- Can be installed in most competitors 4" recessed housings
- Dimmable to 10% with many electronic low voltage dimmers
- Lumen output and distribution comparable to a 50W incandescent lamp
- Suitable for use in IC or NON-IC Applications with 25°C (77°F) continuous room side ambient temperature.
- Provided with quick link for use with E26 Edison Base adapter

Performance:

| | |
|---------------------|---|
| Input Power | 10.5W |
| Input Voltage | 120V |
| Input Frequency | 60Hz |
| Lumens | 604 (LM-79) |
| CCT | 3000K |
| CRI | 90+ |
| LPW | 57.5 |
| Life | 60,000 (L70/TM-21) |
| EMI/RFI | FCC Title 47, Part 15, Class B |
| Min. Start Temp | -30° C |
| Max. Operating Temp | 30° C |
| Warranty | 5 yrs. |
| Labels | cCSAus classified for wet locations ENERGY STAR® qualified |

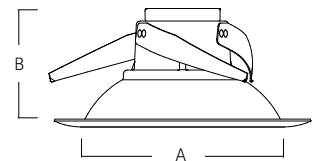
P8080 SERIES

Images:

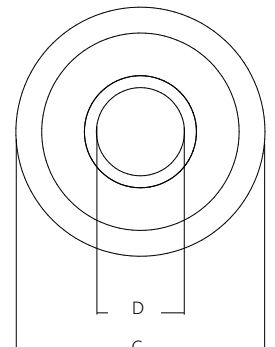


Dimensions:

| | |
|----|-------|
| A | B |
| 4" | 3.25" |



| | |
|----|-------|
| C | D |
| 5" | 2.75" |



Catalog number:

| Base | Finish | Color Temp | CRI | Voltage | Lumen Package |
|--------------|---|--------------------|----------------|-------------------|-------------------------|
| P8080 | 20 - Bronze 28 - White 31 - Black 82 - Metallic Gray | 30K - 3000K | 9 - 90+ | AC1 - 120V | L06 - 604 Lumens |

P8080 SERIES

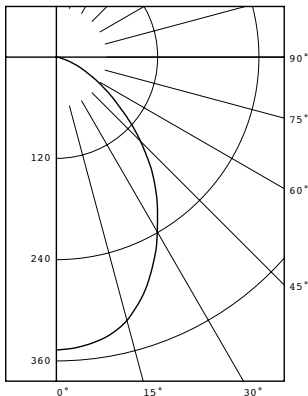
Photometrics:

| | |
|---|-------------------------------|
| ELECTRICAL DATA | P8080 |
| Input Voltage | 120V |
| Input Frequency | 57-63 Hz |
| Input Current | 0.09A |
| Input Power | 10.5W |
| Power Factor | >0.90 |
| THD | <20% |
| EMI Filtering | FCC 47CFR Part 15, Class B |
| Operating Temperature | -30°C to 60°C |
| Dimming | Yes* |
| Over-voltage, over-current, short-circuit protected | |
| *See Dimming Notes for more information | |

PERFORMANCE DATA CHART

| Single Unit, Initial Footcandles, 30" Work Plane | | | | | | Ceiling to Floor Height (ft) | Multiple Units, Initial Footcandles, 30" Work Plane | | | | |
|--|----|----------|----|----------|----|------------------------------|---|------|----------|----|----------|
| Nadir | | 10° | | 20° | | | Spacing is Maximum Over Work Plane, SMH = 1.1 | | | | |
| FC | FC | Dia (ft) | FC | Dia (ft) | FC | | Dia (ft) | FC | Dia (ft) | FC | Dia (ft) |
| 28 | 26 | 1 | 20 | 3 | 13 | 4 | 6 | 4.0 | 40 | 29 | 24 |
| 11 | 11 | 2 | 8 | 4 | 5 | 6 | 8 | 6.0 | 16 | 12 | 10 |
| 5 | 5 | 3 | 4 | 6 | 2 | 9 | 10.5 | 9.0 | 8 | 6 | 5 |
| 4 | 4 | 3 | 3 | 7 | 2 | 11 | 12 | 10.0 | 5 | 4 | 3 |

P8080-28/30K9-AC1-L06
 LED Light Engine: 3000K 90 CRI
 System Wattage: 10.5
 Fixture delivered lumens: 604
 Fixture Efficacy: 57.5
 Spacing Criteria: 1.1



| CANDELA DISTRIBUTION | |
|----------------------|---------|
| DEG | CANDELA |
| 0 | 347 |
| 5 | 344 |
| 15 | 323 |
| 25 | 271 |
| 35 | 208 |
| 45 | 141 |
| 55 | 78 |
| 65 | 35 |
| 75 | 9 |
| 85 | 2 |
| 90 | 0 |

ZONAL LUMEN SUMMARY

| ZONE | LUMENS | %FIXT |
|------|--------|-------|
| 0-30 | 248 | 41.0 |
| 0-40 | 377 | 62.4 |
| 0-60 | 556 | 92.0 |
| 0-90 | 604 | 100.0 |

Test No. 2767673-3 14.00385
 Tested at 25°C Ambient in accordance to IESNA LM-79-2008

P8080 SERIES

Dimming Notes:

P8080 is designed to be compatible with many Electronic Low Voltage (ELV-Reverse Phase) controls. LED rated dimmer controls may offer favorable dimming performance. The following is a partial list of known compatible dimmer controls:

Electronic Low Voltage ELV Reverse Phase Controls

| | | |
|---------|----------------|--------------------------|
| Leviton | Renoir II | AWRMG-EAW |
| Lutron | Diva Series | (Part Number DVELV-300P) |
| Lutron | Maestro Series | (Part Number MAELV-600) |
| Lutron | Nova T Series | (Part Number NTELV-300) |
| Lutron | Spacer Series | (Part Number SPSELV-600) |
| Lutron | Vierti Series | (Part Number VTELV-600) |

LED Rated Controls

| | |
|----------------|-----------------------------|
| Pass & Seymour | (Part Number DCL453PTCCCV6) |
|----------------|-----------------------------|

Digital type dimmers are not recommended.

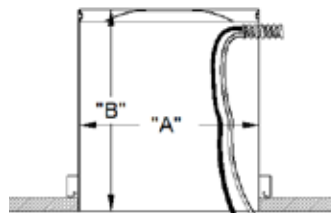
Dimming capabilities will vary depending on the dimmer control, load, and circuit installation. Always refer to dimmer manufacturer instructions or a controls specialist for specific requirements.

Dimmer control brand names where identified above are trade names or registered trademarks of each respective company.

Compatibility of 4" Recessed Housings:

The P8080's are cCSAus classified for use with Progress and most competitive recessed cans (with "A" and "B" dimensions) including:

- Progress
- Capri
- Commercial Electric
- Elco
- Emerald
- Halo
- Intense
- Jimway
- Juno
- Nora
- Prescolite



"A" = 4-5/16" MIN. 5-1/8" MAX.
 "B" = 3-1/2" MIN.

NOTES

1. Operation in ambient temperatures higher than those specified will shorten life.
2. Warranty is limited to repair and replacement of defective parts of the LED system and does not include labor or installation. 5 year warranty requires product registration. Contact Technical Support for details.