

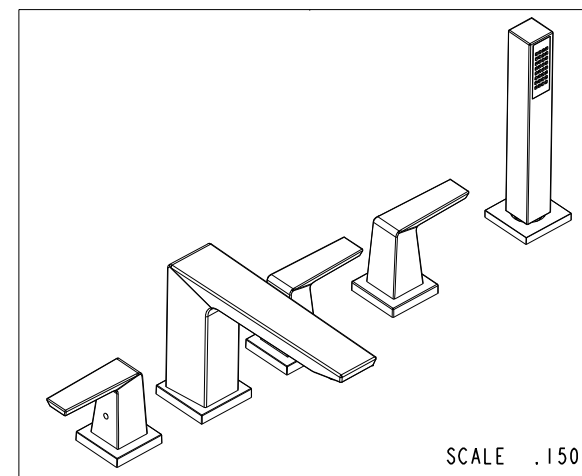
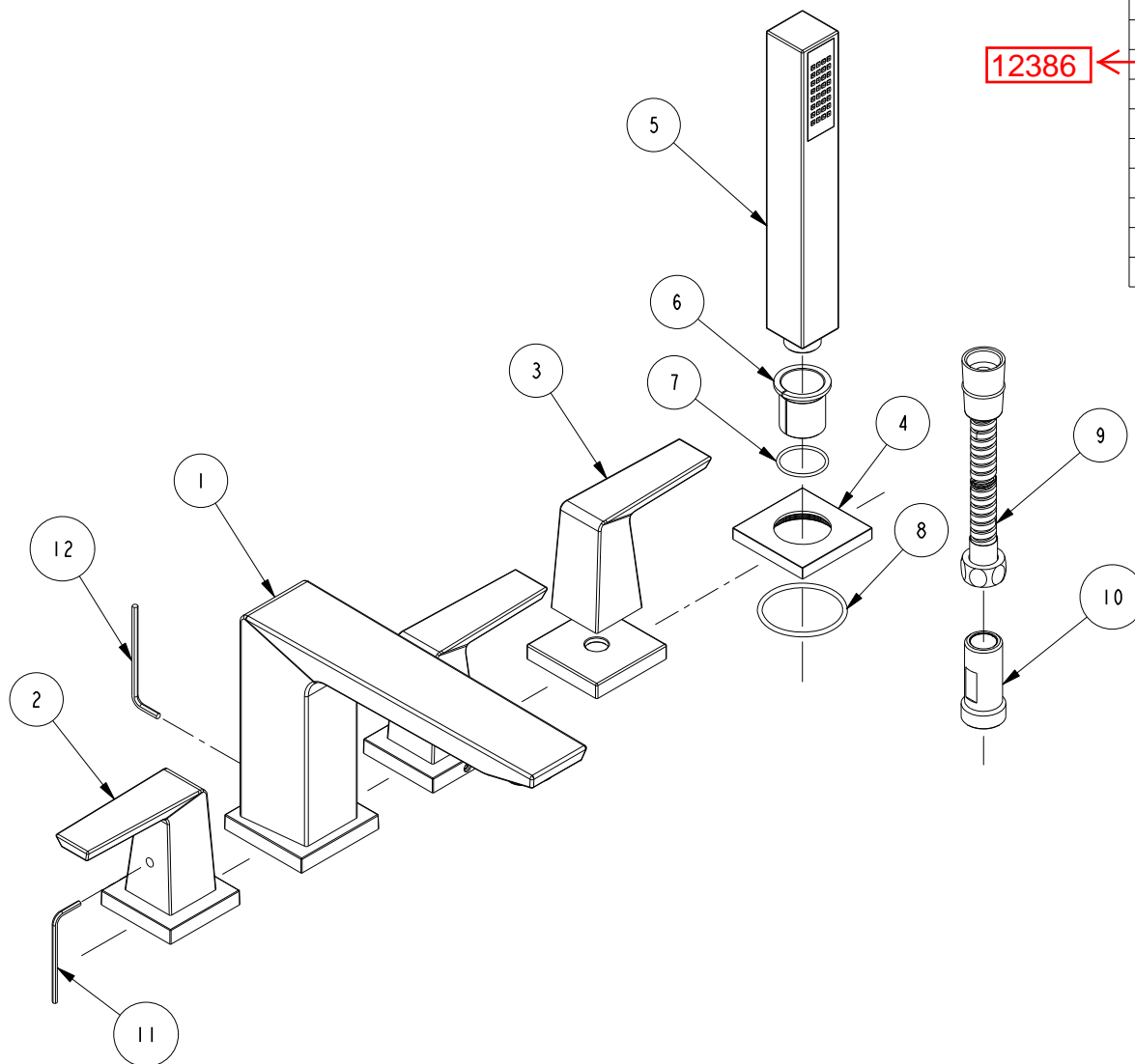
NOTES:

(N1) 1. FIT/FORM/FUNCTION SHALL FOLLOW PS-E-008.

BILL OF MATERIAL (CURRENT LEVEL)

ITEM	PT/ASSY	DESCRIPTION	TYPE	QTY.
1	3-482	SPOUT ASM	ASSEMBLY	1
2	3-483	HANDLE ASM	ASSEMBLY	2
3	3-484	HANDLE ASM	ASSEMBLY	1
4	12331	FLANGE	PART	1
5	<del>AT8E0164</del>	HAND SHOWER	PART	1
6	91548	INSERT	PART	1
7	91024	O-RING, #2- 022, EPDM, 65-75 DURO	PART	1
8	91394	O-RING, #2-132, EPDM, 65-75 DURO	PART	1
9	284-	HOSE	ASSEMBLY	1
10	20-102	ADAPTER ASSY	ASSEMBLY	1
11	CCQT0002	HEX KEY	PART	1
12	CCQTXXX1	HEX KEY	PART	1

12386



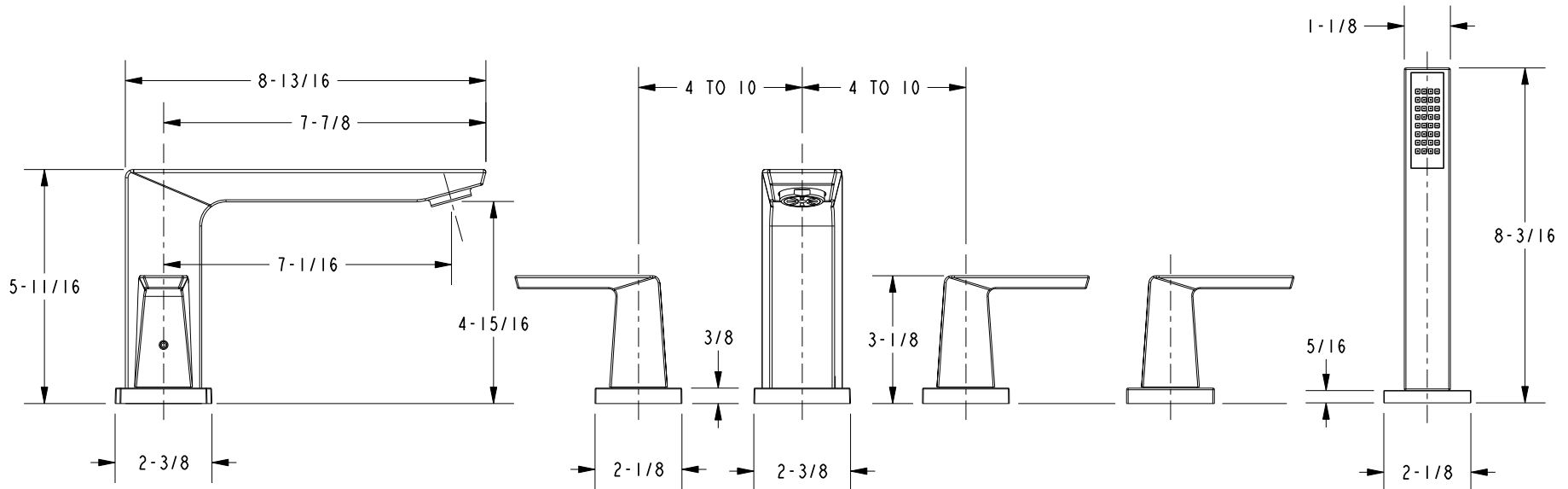
COPYRIGHT 2005 BRASSTECH, INC. THESE DRAWINGS AND THE DESIGNS DEPICTED HEREIN ARE THE PROPRIETARY PROPERTY OF BRASSTECH. ANY USE OR REPRODUCTION IS SUBJECT TO THE EXPRESS APPROVAL OF BRASSTECH. UNAUTHORIZED USE IS STRICTLY PROHIBITED. ALL RIGHTS RESERVED.

**BRASSTECH**  
INCORPORATED  
2001 CARNEGIE AVE.  
SANTA ANA, CA 92705  
(949) 417-5207

ROMAN TUB FAUCET - CRISS CROSS

ASSY. NO.	3-8307	-	-	-
SCALE .250	REF. -	SHEET 1 OF 3	REV	REV DESC
				DATE

# SPECIFICATION DWG

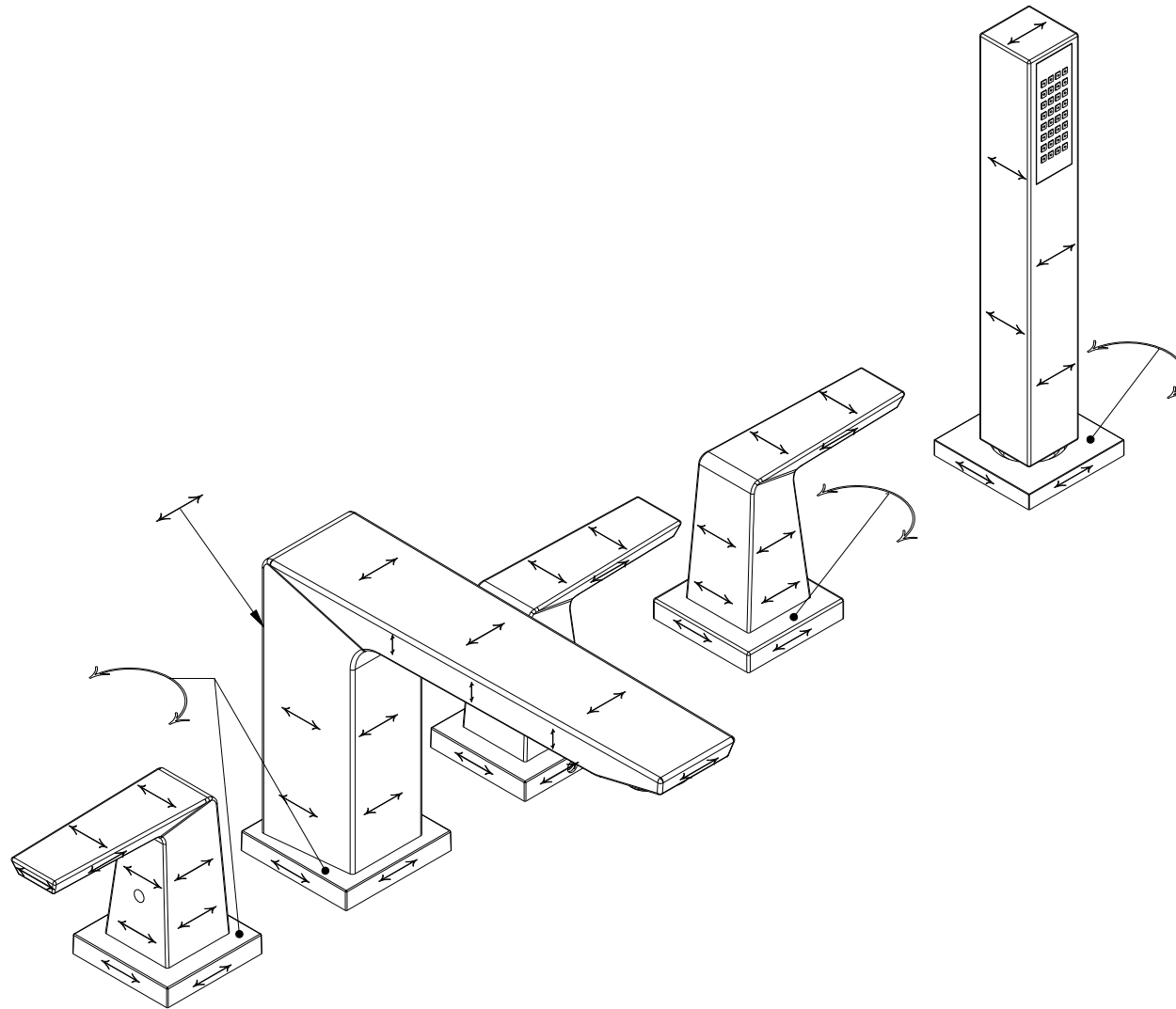


DIMENSIONS ARE IN INCHES AND AN APPROXIMATION OF A TYPICAL INSTALLATION

COPYRIGHT 2005 BRASSTECH, INC. THESE DRAWINGS AND THE DESIGNS DEPICTED HEREIN ARE THE PROPRIETARY PROPERTY OF BRASSTECH. ANY USE OR REPRODUCTION IS SUBJECT TO THE EXPRESS APPROVAL OF BRASSTECH. UNAUTHORIZED USE IS STRICTLY PROHIBITED. ALL RIGHTS RESERVED.

<b>BRASSTECH</b>		2001 CARNEGIE AVE.
INCORPORATED		SANTA ANA, CA 92705
		(949) 417-5207
DWG NO.	3-8307	REV -
SCALE .250	REF. -	SHEET 2 OF 3

# SPECIFICATION DWG



DIMENSIONS ARE IN INCHES AND AN APPROXIMATION OF A TYPICAL INSTALLATION

COPYRIGHT 2005 BRASSTECH, INC. THESE DRAWINGS AND THE DESIGNS DEPICTED HEREIN ARE THE PROPRIETARY PROPERTY OF BRASSTECH. ANY USE OR REPRODUCTION IS SUBJECT TO THE EXPRESS APPROVAL OF BRASSTECH. UNAUTHORIZED USE IS STRICTLY PROHIBITED. ALL RIGHTS RESERVED.

<b>BRASSTECH</b>		2001 CARNEGIE AVE.
INCORPORATED		SANTA ANA, CA 92705
		(949) 417-5207
DWG NO.	3-8307	REV -
SCALE .350	REF. -	SHEET 3 OF 3