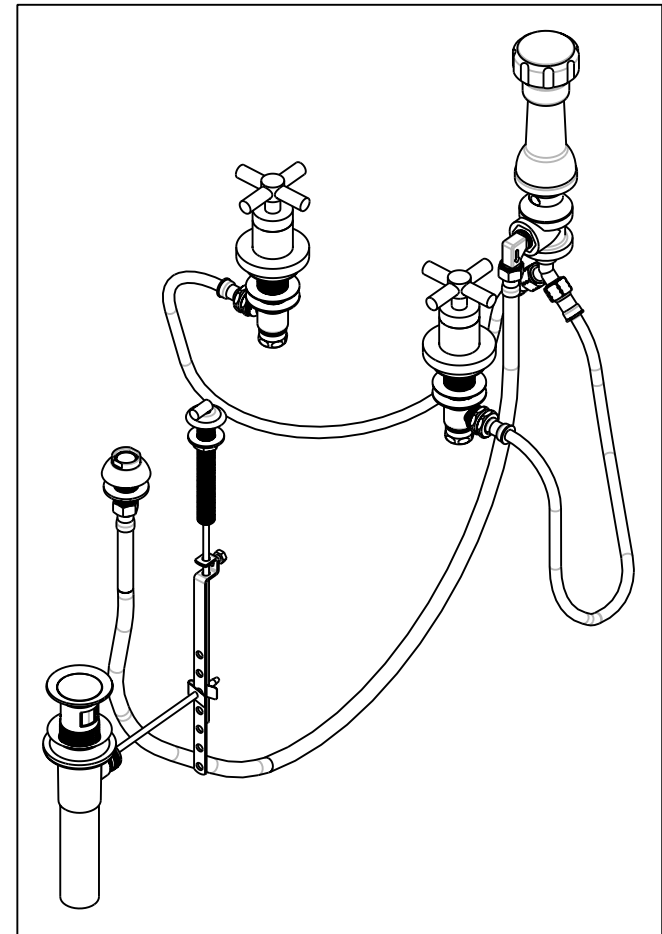
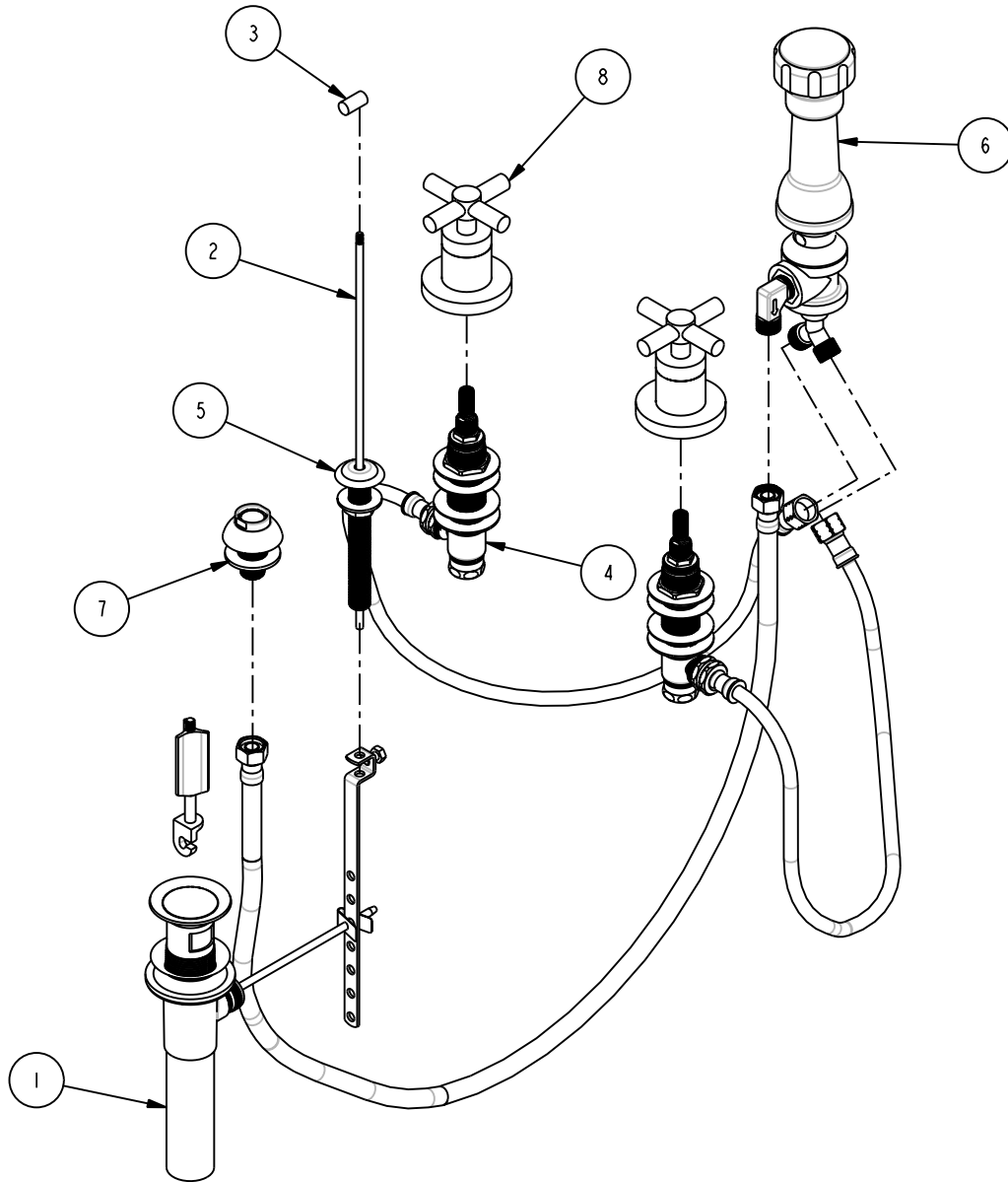


NOTES:

BILL OF MATERIAL (CURRENT LEVEL)

ITEM	PT/ASSY	DESCRIPTION	TYPE	QTY.
1	325	POP UP ASSEMBLY	ASSEMBLY	1
2	10288	3/16" POP UP ROD	PART	1
3	10827	POP-UP KNOB	PART	1
4	1-542	VALVE KIT - BIDET	ASSEMBLY	1
5	2-159	POP-UP ROD GUIDE ASSEMBLY	ASSEMBLY	1
6	2-235	BIDET DIVERTER / V. BRE	ASSEMBLY	1
7	2-236	DOUCHE SPRAY ASSEMBLY	ASSEMBLY	1
8	3-227	HANDLE TRIM - STOP VALVE	ASSEMBLY	2



BRASSTECH 2001 E. CARNEGIE AVE
INCORPORATED SANTA ANA, CA 92705
(949) 417-5207

BIDET SET

ASSY. NO.

999

SCALE 0.200

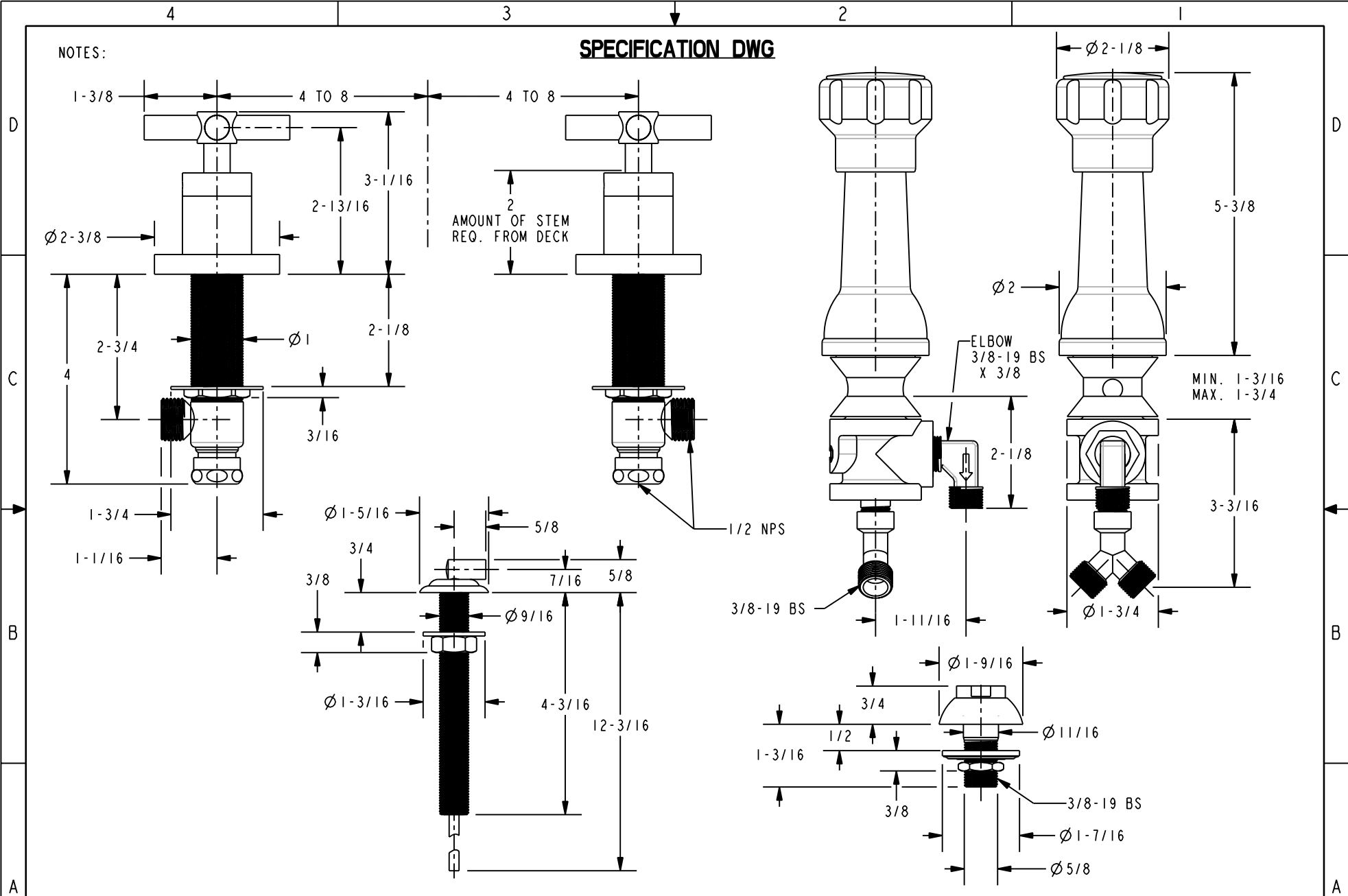
REF. -

SHEET 1 OF 1

COPYRIGHT ©

SPECIFICATION DWG

NOTES:



DIMENSIONS ARE IN INCHES AND AN APPROXIMATION OF A TYPICAL INSTALLATION

BRASSTECH 2001 E. CARNEGIE AVE.
INCORPORATED SANTA ANA, CA 92705
(949) 417-5207

BIDET SET

ASSY. NO. **999_SPEC**

SCALE 0.400

REF. -

SHEET | OF |

COPYRIGHT ©