

4

3

2

1

D

D

C

C

B

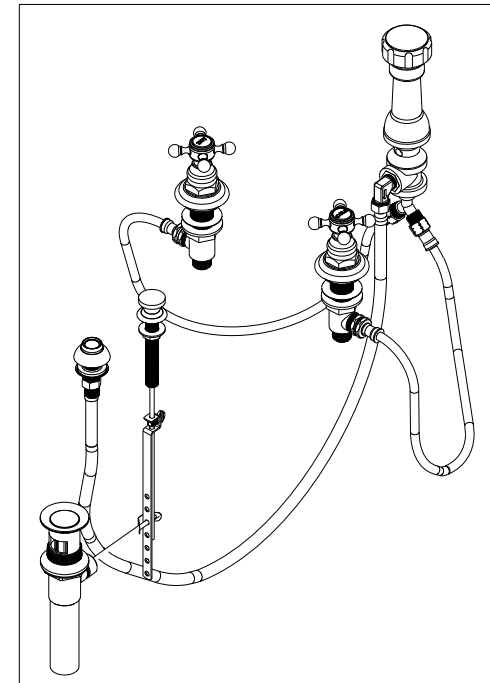
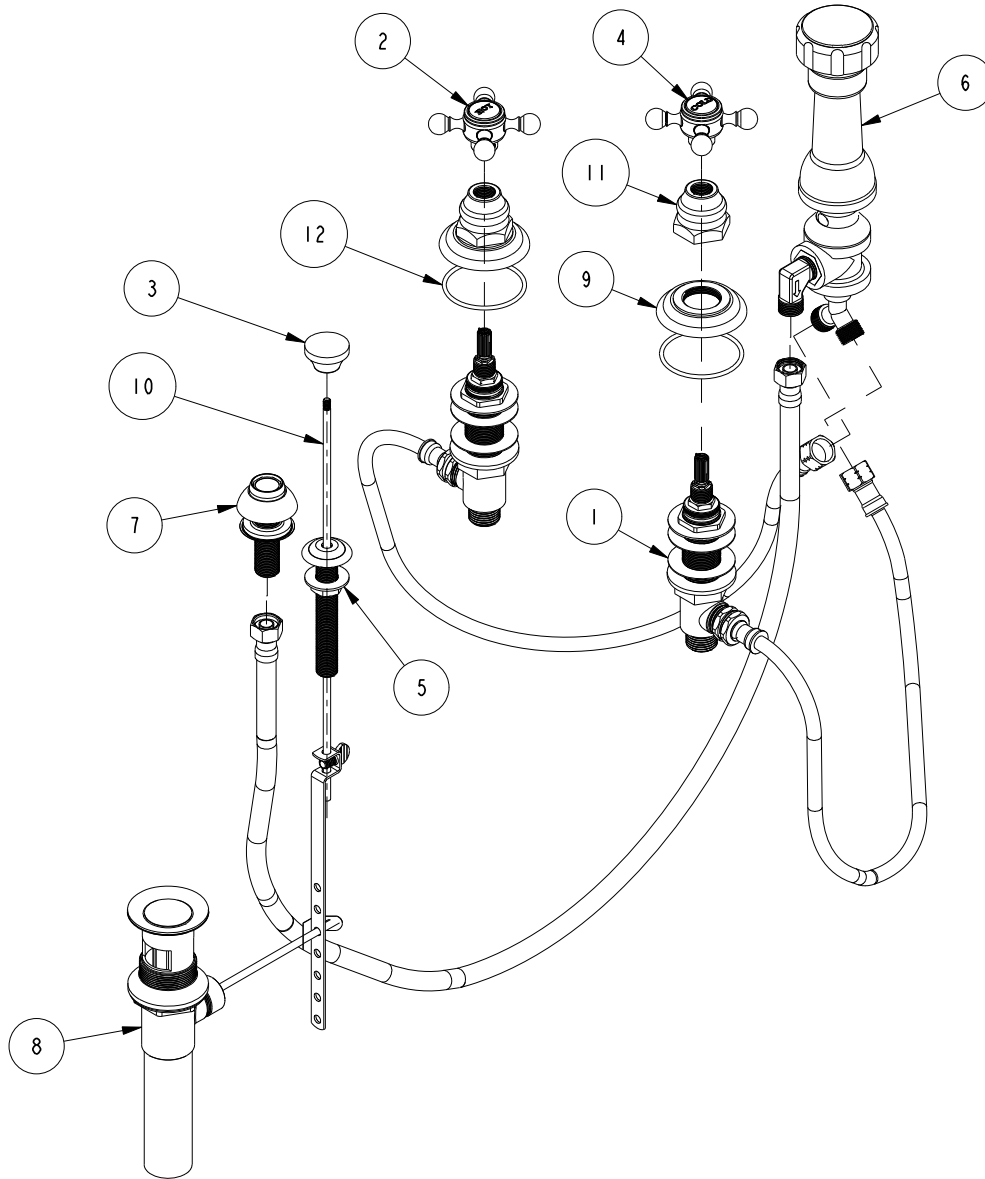
B

A

A

BILL OF MATERIAL (CURRENT LEVEL)

| ITEM | PT/ASSY | DESCRIPTION | TYPE | QTY. |
|------|---------|----------------------------------|----------|------|
| 1 | 1-542 | VALVE KIT - BIDET | ASSEMBLY | 1 |
| 2 | 2-141 | HANDLE ONLY, HOT | ASSEMBLY | 1 |
| 3 | 10961 | SMOOTH POP - UP KNOB | PART | 1 |
| 4 | 2-142 | HANDLE ONLY, COLD | ASSEMBLY | 1 |
| 5 | 2-159 | POP-UP ROD GUIDE ASSEMBLY | ASSEMBLY | 1 |
| 6 | 2-235 | BIDET DIVERTER / V. BRE | ASSEMBLY | 1 |
| 7 | 2-236 | DOUCHE SPRAY ASSEMBLY | ASSEMBLY | 1 |
| 8 | 325 | POP UP ASSEMBLY | ASSEMBLY | 1 |
| 9 | 10048 | ESCUTCHEON W/S VALVE | PART | 2 |
| 10 | 10288 | 3/16" POP UP ROD | PART | 1 |
| 11 | 10523 | HEX ESCUTCHEON BONNET | PART | 2 |
| 12 | 91231 | O-RING, #2-136, EPDM, 65-75 DURO | PART | 2 |



COPYRIGHT 2005 BRASSTECH, INC. THESE DRAWINGS AND THE DESIGNS DEPICTED HEREIN ARE THE PROPRIETARY PROPERTY OF BRASSTECH. ANY USE OR REPRODUCTION IS SUBJECT TO THE EXPRESS APPROVAL OF BRASSTECH. UNAUTHORIZED USE IS STRICTLY PROHIBITED. ALL RIGHTS RESERVED.

BRASSTECH
INCORPORATED

2001 E. CARNEGIE AVE.
SANTA ANA, CA 92705
(949) 417-5207

BIDET W/ VACUUM BREAKER

ASSY. NO.
929

SCALE .200

REF. -

SHEET 1 OF 2

| | | |
|-----|----------|----------|
| C | EN-2334 | 12/20/12 |
| B | EO-0818 | 03/30/07 |
| A | NEW DVTR | 6/00 |
| - | RELEASED | PRE '95 |
| REV | REV DESC | DATE |

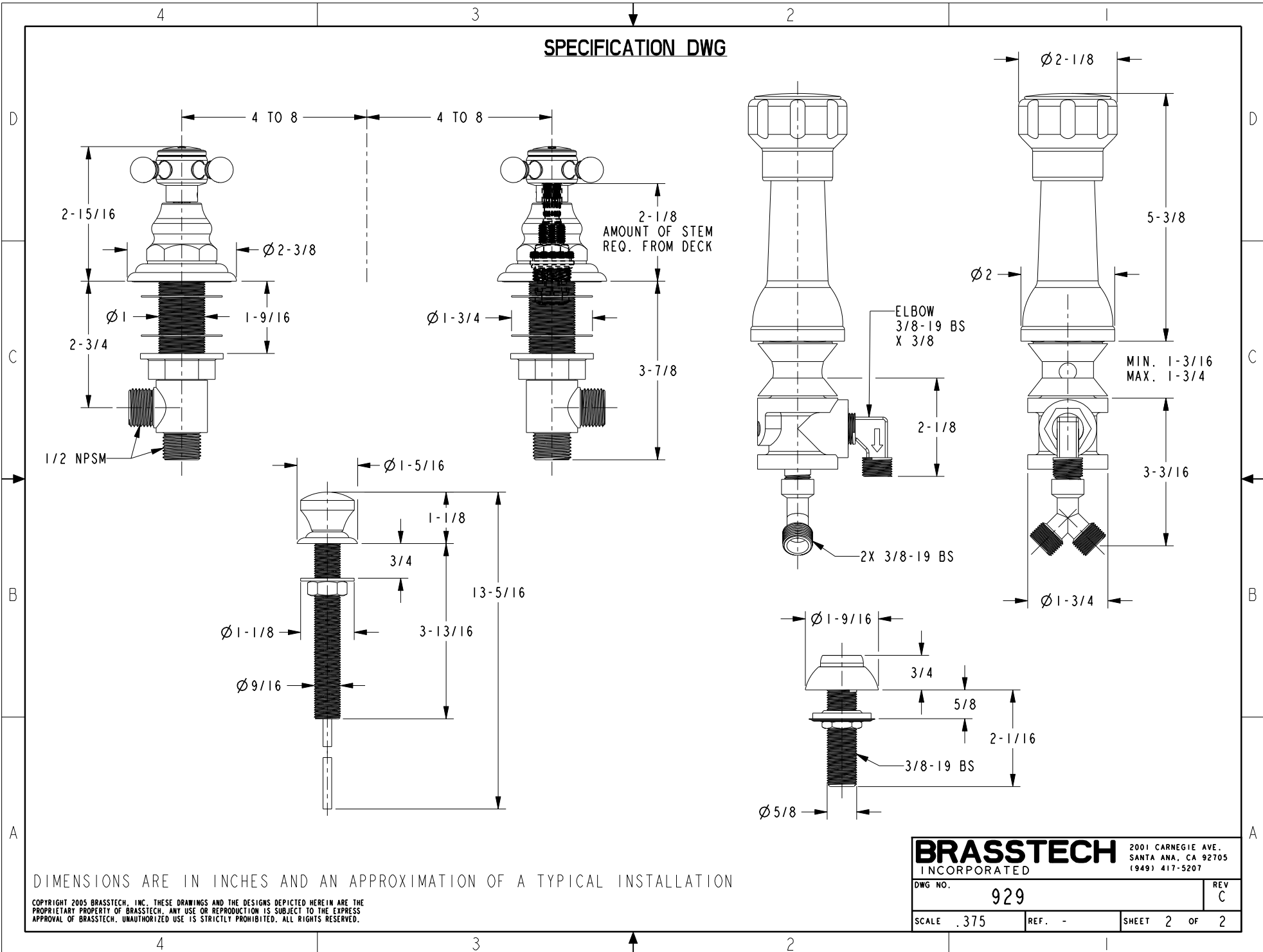
4

3

2

1

SPECIFICATION DWG



DIMENSIONS ARE IN INCHES AND AN APPROXIMATION OF A TYPICAL INSTALLATION

COPYRIGHT 2005 BRASSTECH, INC. THESE DRAWINGS AND THE DESIGNS DEPICTED HEREIN ARE THE PROPRIETARY PROPERTY OF BRASSTECH. ANY USE OR REPRODUCTION IS SUBJECT TO THE EXPRESS APPROVAL OF BRASSTECH. UNAUTHORIZED USE IS STRICTLY PROHIBITED. ALL RIGHTS RESERVED.

BRASSTECH 2001 CARNEGIE AVE.
INCORPORATED SANTA ANA, CA 92705
(949) 417-5207

| | | | |
|---------|------|------|------|
| DWG NO. | 929 | REV | C |
| SCALE | .375 | REF. | - |
| SHEET | | 2 | OF 2 |