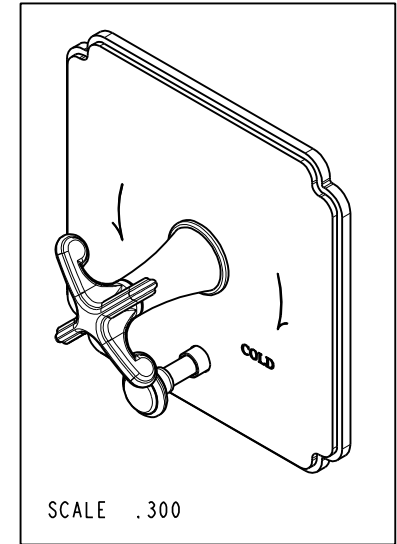
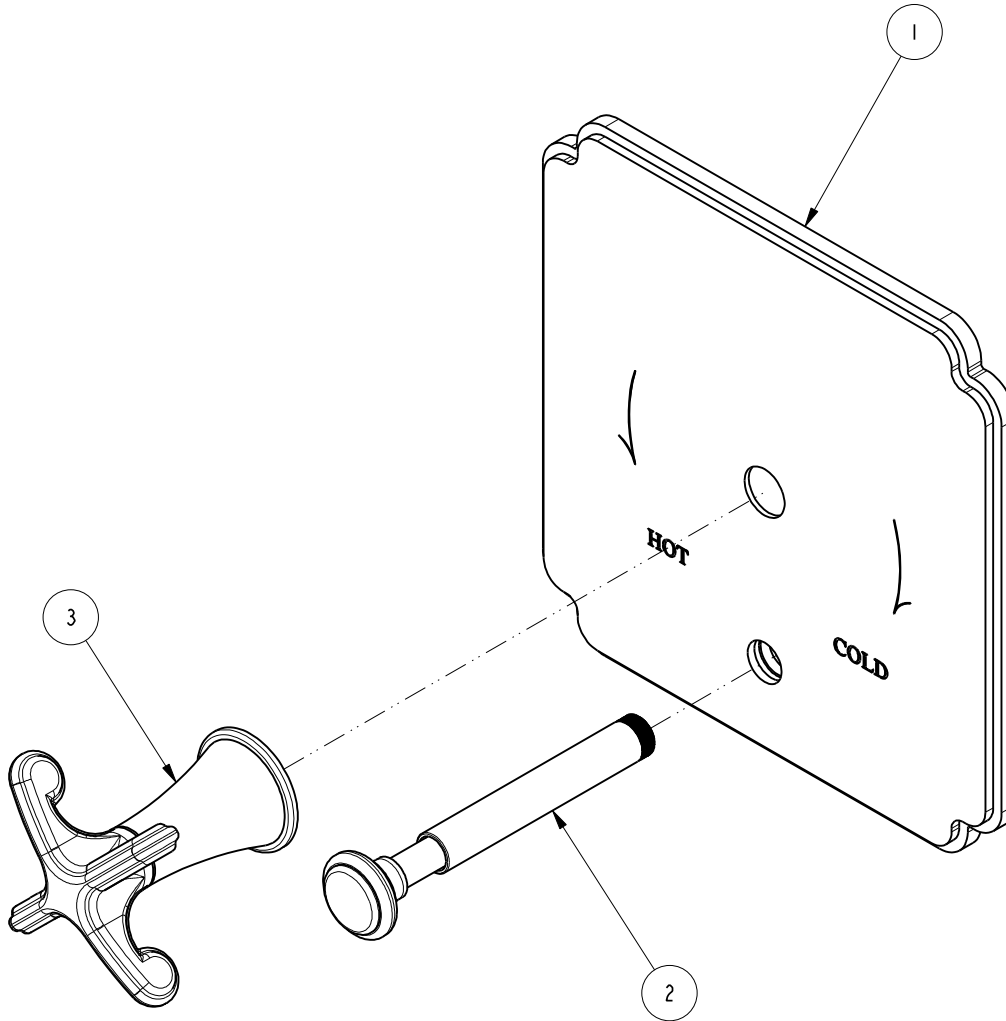


NOTES:

(NI) 1. FIT / FORM / FUNCTION SHALL FOLLOW PS-E.008.

BILL OF MATERIAL (CURRENT LEVEL)

ITEM	PT/ASSY	DESCRIPTION	TYPE	QTY.
1	8-006	SHOWER PLATE ASM	ASSEMBLY	1
2	8-007	DIVERTER TRIM ASM	ASSEMBLY	1
3	20-299	BP LEVER HANDLE ASM	ASSEMBLY	1



UNITS ARE: INCHES [MM]
 TOLERANCES ARE:
 FRACTIONS DECIMALS ANGLES
 $\pm 1/16"$ $.X \pm .1$ [2,5] $\pm 1^\circ$
 $.XX \pm .06$ [1,5]

(X.XXX) DENOTES CRITICAL DIMS.
 ALL THREADS ARE CRITICAL

TESTING	-	-	-
ASSEMBLY	-	-	-
PLATING	-	-	-
POLISHING	-	NEXT ASSY	USED ON
MACHINING	-	APPLICATION	
TOOLING	FIXTURE #	REMOVE ALL BURRS AND SHARP EDGES	

DRAWN	JINSON	01/18/18
CHECKED	J.A.	01/18/18
APPROVED	J.A.	01/18/18

BRASSTECH 2001 CARNEGIE AVE.
 INCORPORATED SANTA ANA, CA 92705
 (949) 417-5207

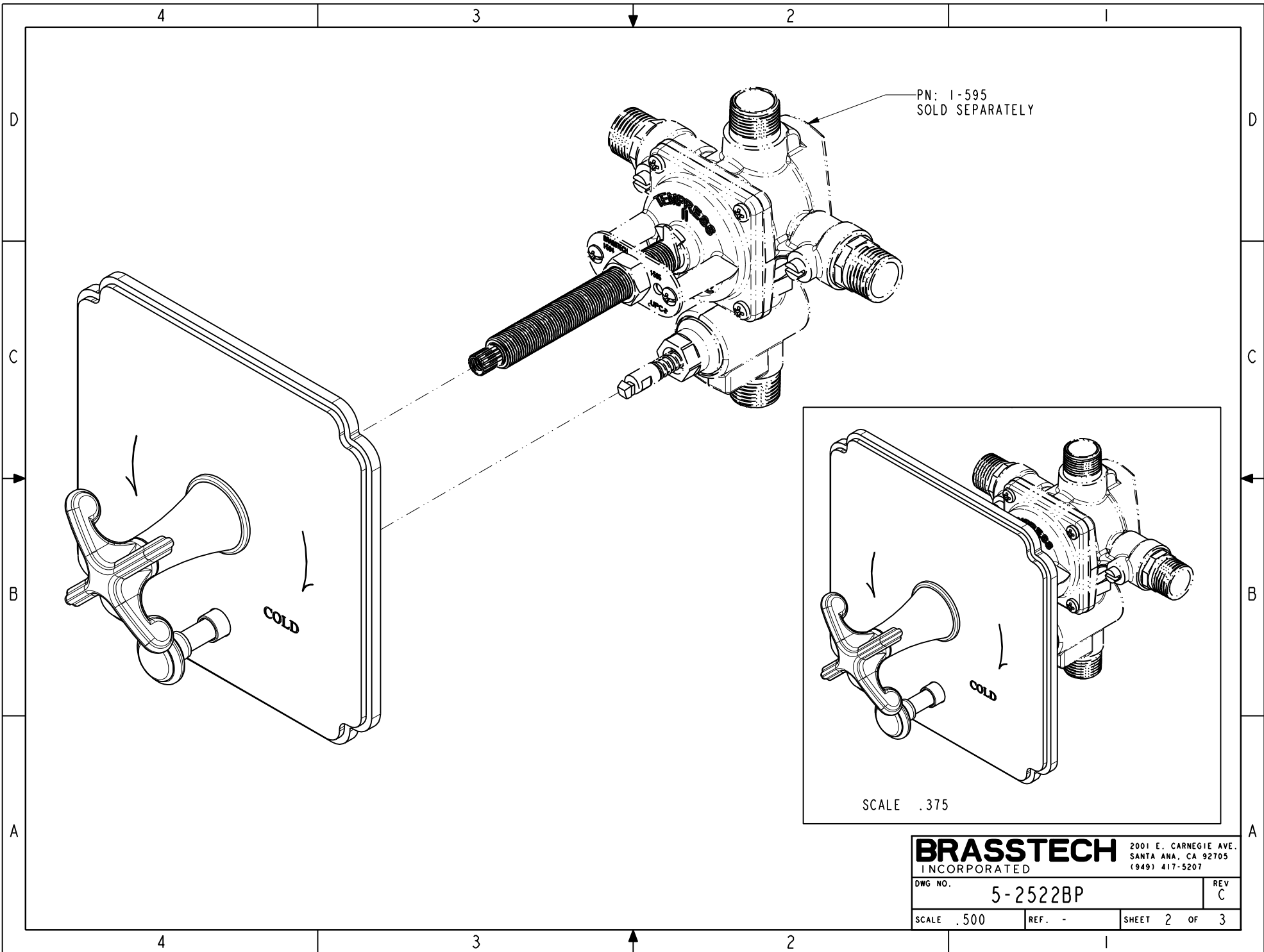
**BP TRIM PLATE WITH
 DIVERTER, CROSS HANDLE**

DWG NO. **5-2522BP** REV **C**

SCALE **.500** REF. - SHEET **1** OF **3**

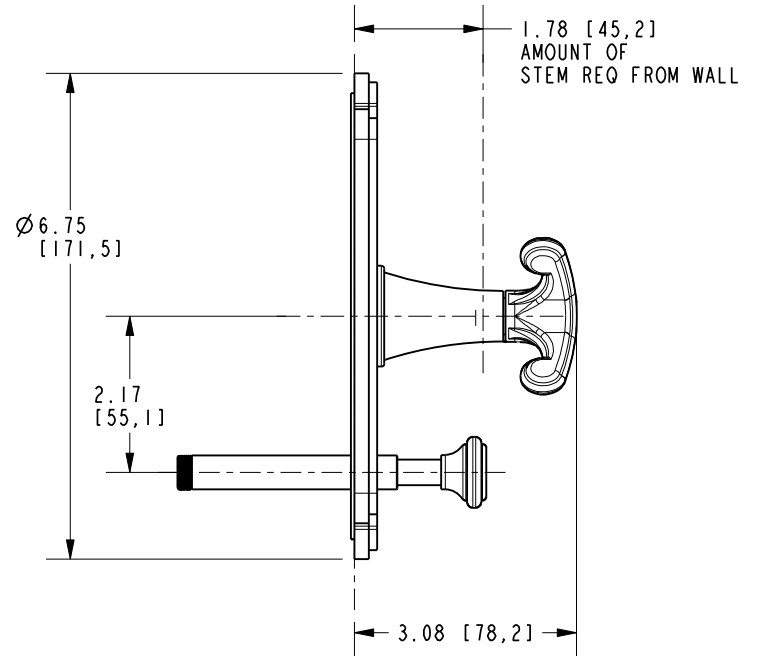
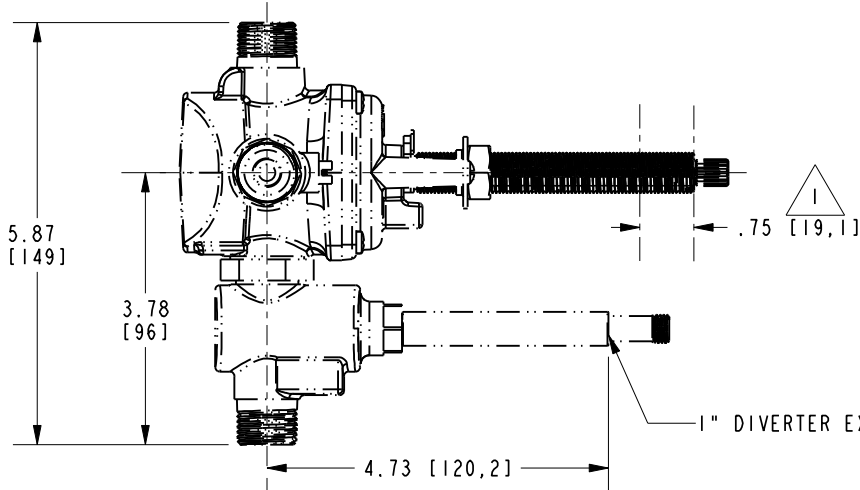
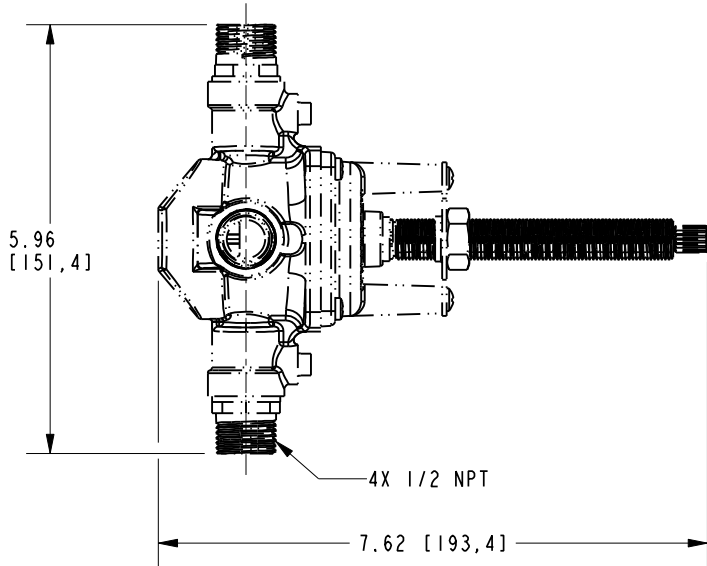
COPYRIGHT 2005 BRASSTECH, INC.
 THESE DRAWINGS AND THE DESIGNS
 DEPICTED HEREIN ARE THE PROPRIETARY
 PROPERTY OF BRASSTECH. ANY USE
 OR REPRODUCTION IS SUBJECT TO
 THE EXPRESS APPROVAL OF BRASSTECH.
 UNAUTHORIZED USE IS STRICTLY
 PROHIBITED. ALL RIGHTS RESERVED.

ZONE	REV	DESCRIPTION	DATE	APPROVED
-	C	EN-3435	01/18/18	J.A.
-	B	EN-2997	08/25/16	J.A.
-	A	EN-2027b	07/07/15	AN
-	-	EN-2735	04/30/14	JM



NOTES:

1 CUT ALL-THREAD 0.75" SHORTER THAN STEM.



BRASSTECH		2001 E. CARNEGIE AVE.	
INCORPORATED		SANTA ANA, CA 92705	
DWG NO. 5-2522BP		REV C	
SCALE .375	REF. -	SHEET 3 OF 3	