
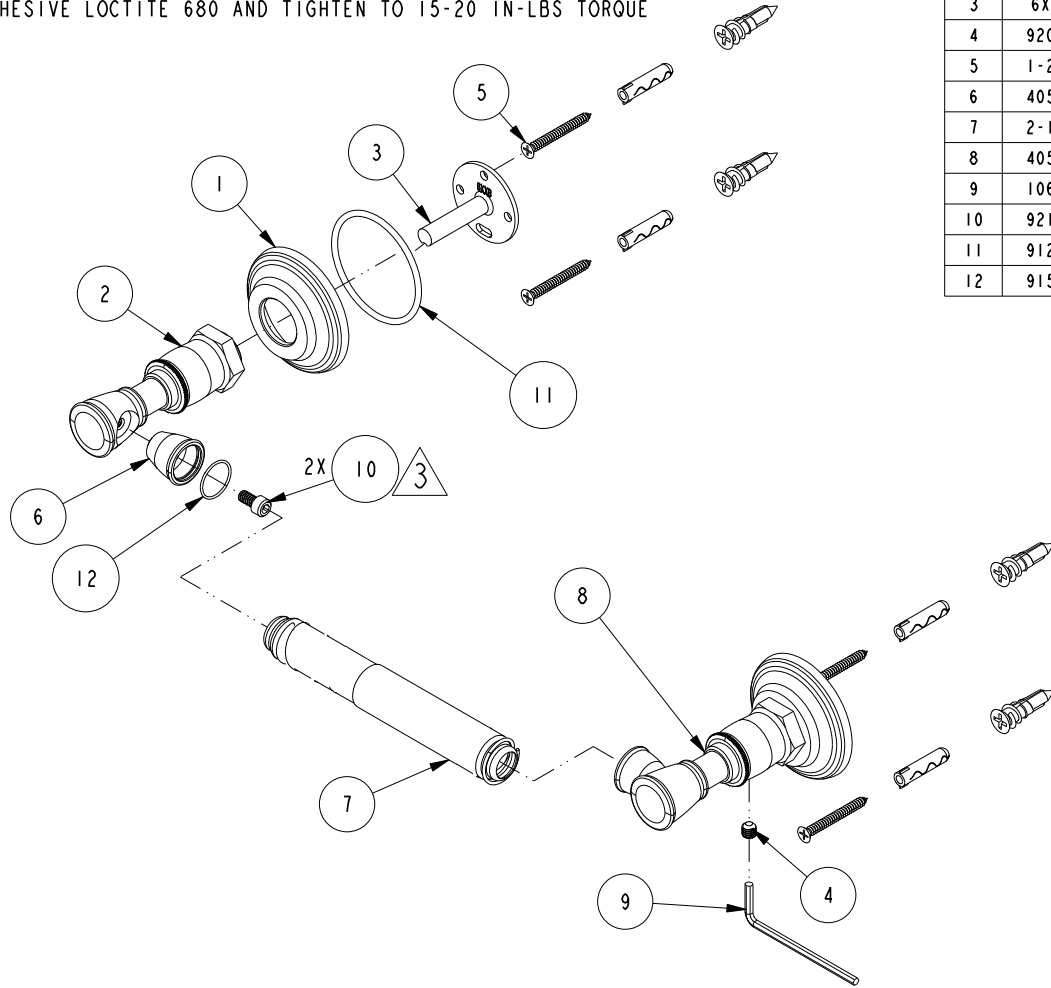


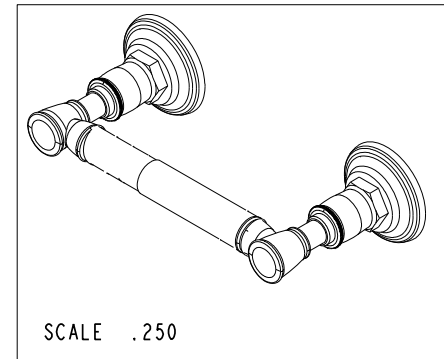
NOTES:

- (N1) 1. FIT / FORM / FUNCTION SHALL FOLLOW PS-E.008.
- (N2) 2. PLACE ITEMS# 5, 9 AND 11 IN SEPARATE BAG.
- (N3)  3. APPLY ADHESIVE LOCTITE 680 AND TIGHTEN TO 15-20 IN-LBS TORQUE



BILL OF MATERIAL (CURRENT LEVEL)

ITEM	PT/ASSY	DESCRIPTION	TYPE	QTY.
1	40553	ESCUTCHEON	PART	2
2	40530	POST	PART	1
3	6XXB	MOUNTING BRACKET	PART	2
4	92031	SCRW, M6 X 1 X 6 SKT HD CUP PT SS	PART	2
5	1-206	HARDWARE PACK	ASSEMBLY	2
6	40531	FINIAL	PART	2
7	2-184	TISSUE ROLLER ASSEMBLY	ASSEMBLY	1
8	40539	POST - RIGHT	PART	1
9	10615	HEX KEY, 3MM ALLOY STEEL	PART	1
10	92125	SCRW, 10-24 X 3/8 SKT CAP HD SS	PART	2
11	91298	O-RING, #2-134	PART	2
12	91577	O-RING, 1 X 16MM ID, EPDM, 65-75 DURO	PART	2



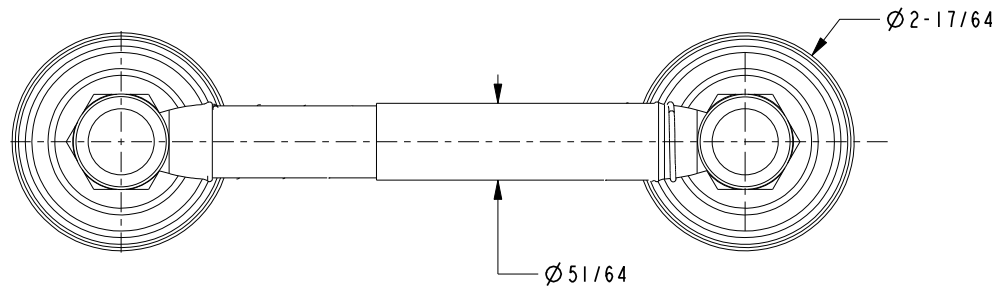
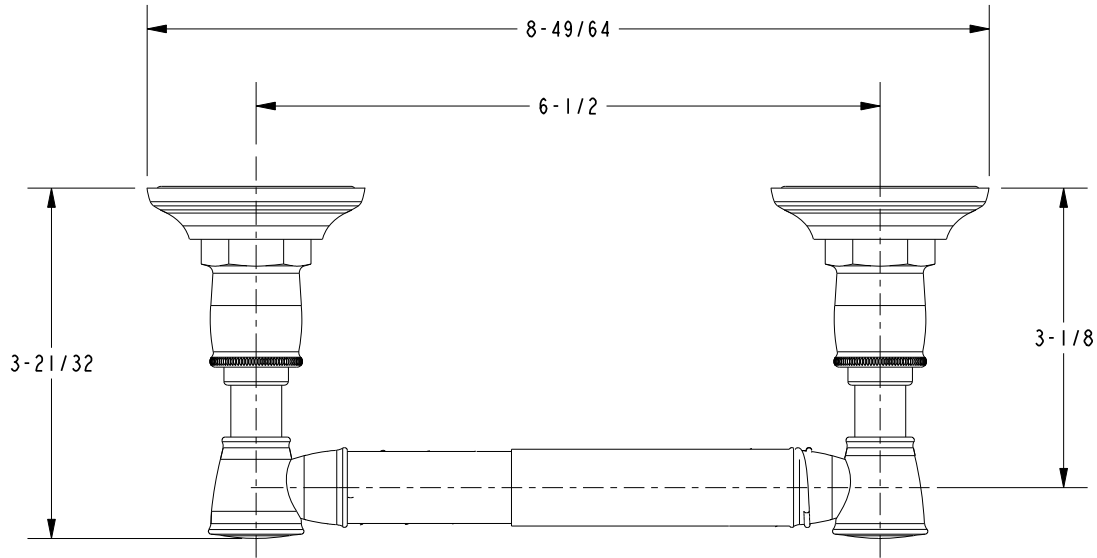
TESTING	-	-	-	UNITS ARE: INCHES [MM]
ASSEMBLY	-	-	-	TOLERANCES ARE:
PLATING	-	-	-	FRACTIONS DECIMALS ANGLES
POLISHING	-	NEXT ASSY	USED ON	±1/16" .X ±.1 [2,5] ±1°
MACHINING	-	APPLICATION		(X.XXX) DENOTES CRITICAL DIMS.
TOOLING FIXTURE #	REMOVE ALL BURRS AND SHARP EDGES			ALL THREADS ARE CRITICAL
				DRAWN
				CHECKED
				APPROVED

BRASSTECH 2001 CARNEGIE AVE.
INCORPORATED SANTA ANA, CA 92705
(949) 417-5207

TISSUE HOLDER

DWG NO.	40-28	REV	B
SCALE	.313	REF.	-
SHEET	1	OF	2

-	B	EN-3089	06/30/16	J.M.	COPYRIGHT 2005 BRASSTECH, INC. THESE DRAWINGS AND THE DESIGNS DEPICTED HEREIN ARE THE PROPRIETARY PROPERTY OF BRASSTECH. ANY USE OR REPRODUCTION IS SUBJECT TO THE EXPRESS APPROVAL OF BRASSTECH. UNAUTHORIZED USE IS STRICTLY PROHIBITED. ALL RIGHTS RESERVED.
-	A	EN-2717	04/16/14	-	
-	-	EN-2086	09/01/13	-	
ZONE	REV	DESCRIPTION	DATE	APPROVED	



BRASSTECH		2001 E. CARNEGIE AVE.	
INCORPORATED		SANTA ANA, CA 92705	
		(949) 417-5207	
DWG NO.	40-28	REV	B
SCALE	.500	REF.	SHEET 2 OF 2