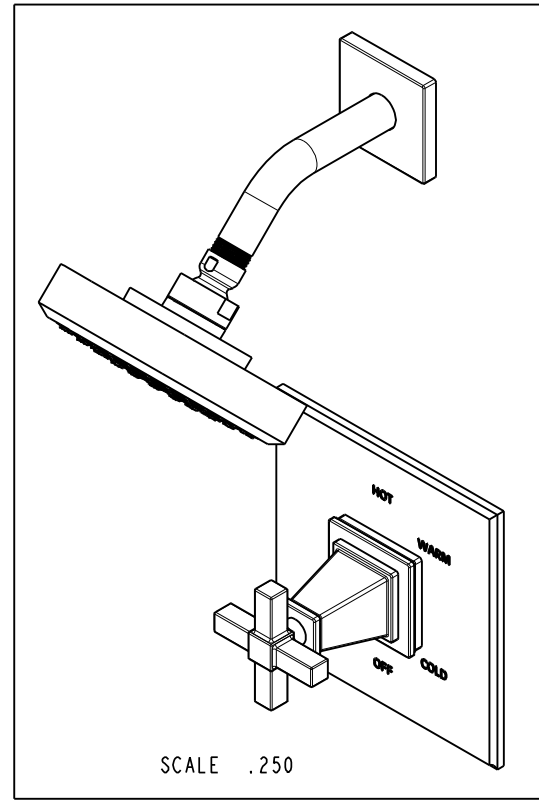


NOTES:

(N1) 1. FIT / FORM / FUNCTION SHALL FOLLOW PS-E.008.

BILL OF MATERIAL (CURRENT LEVEL)

ITEM	PT/ASSY	DESCRIPTION	TYPE	QTY.
1	2-293	COVERPLATE BP	ASSEMBLY	1
2	2-640	FLANGE ASSEMBLY	ASSEMBLY	1
3	200	SHOWER ARM 6" BRASS	PART	1
4	2141	CONTEMP. SHOWER HEAD - SINGLE JET	ASSEMBLY	1
5	3-581	CROSS HANDLE W/ESC.	ASSEMBLY	1



COPYRIGHT 2005 BRASSTECH, INC. THESE DRAWINGS AND THE DESIGNS DEPICTED HEREIN ARE THE PROPRIETARY PROPERTY OF BRASSTECH. ANY USE OR REPRODUCTION IS SUBJECT TO THE EXPRESS APPROVAL OF BRASSTECH. UNAUTHORIZED USE IS STRICTLY PROHIBITED. ALL RIGHTS RESERVED.

ZONE	REV	DESCRIPTION	DATE	APPROVED
-	-	EN-3061	08/11/16	J.M

TESTING	ASSEMBLY	PLATING	POLISHING	MACHINING	TOOLING	FIXTURE #	APPLICATION
-	-	-	-	-	-	-	REMOVE ALL BURRS AND SHARP EDGES

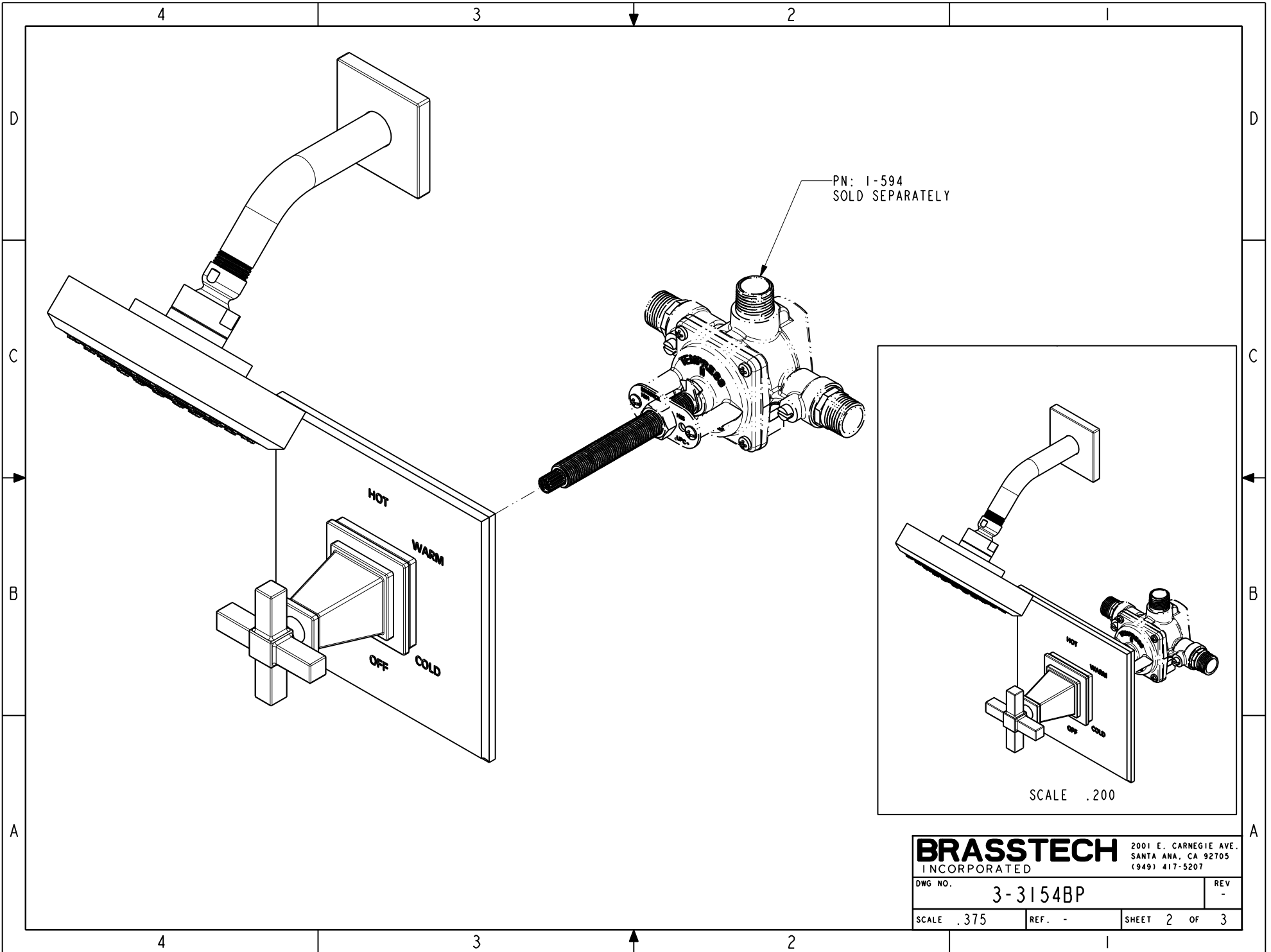
UNITS ARE: INCHES [MM]
 TOLERANCES ARE:
 FRACTIONS DECIMALS ANGLES
 $\pm 1/16"$.X $\pm .1$ [2.5] $\pm 1^\circ$
 .XX $\pm .06$ [1.5]
 (X.XXX) DENOTES CRITICAL DIMS.
 ALL THREADS ARE CRITICAL
 DRAWN JINSON 08/11/16
 CHECKED RAVINDRA 08/11/16
 APPROVED J.M 08/11/16

BRASSTECH 2001 CARNEGIE AVE. SANTA ANA, CA 92705 (949) 417-5207
 INCORPORATED

BP SHOWER TRIM SET

DWG NO. 3-3154BP REV -

SCALE .325 REF. - SHEET 1 OF 3

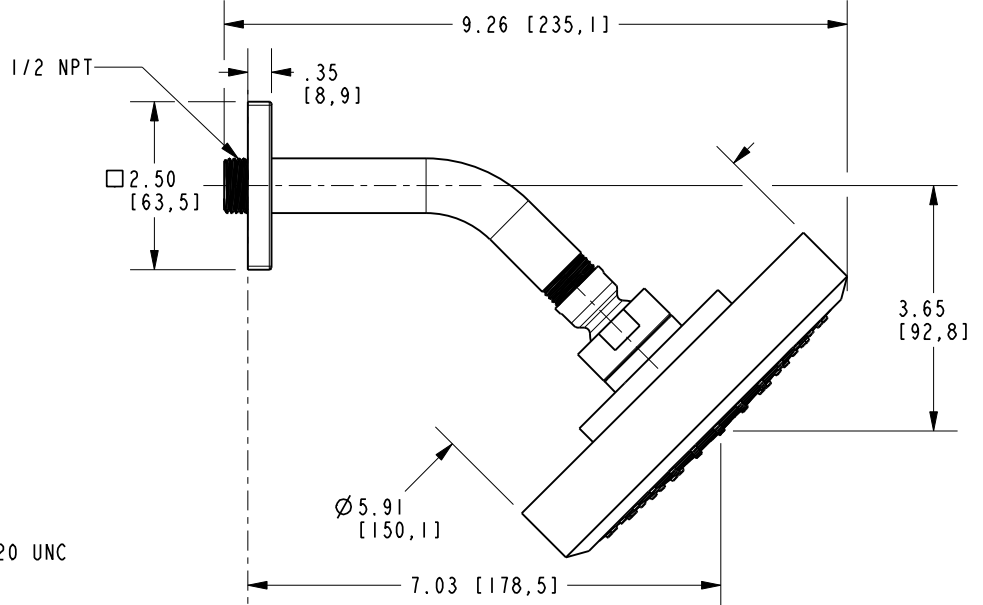
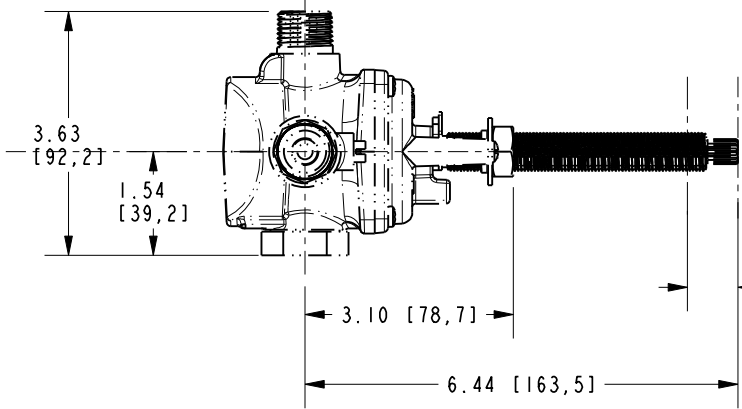
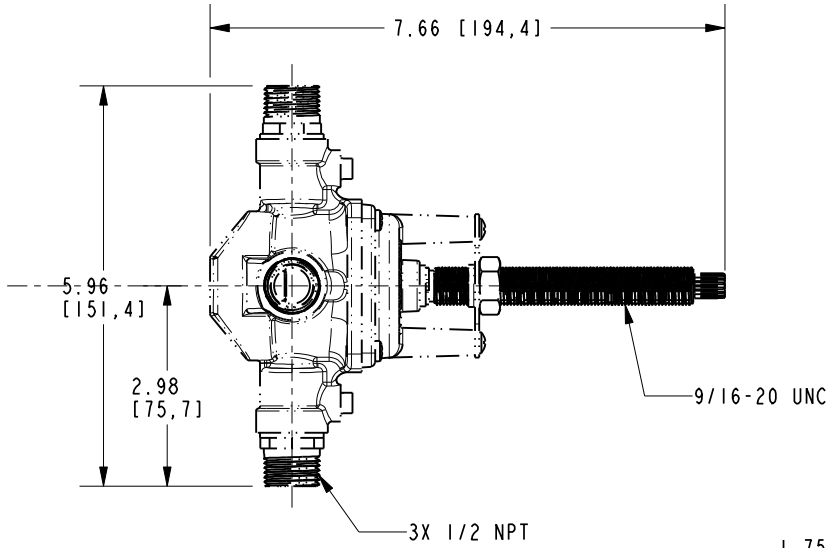


BRASSTECH 2001 E. CARNEGIE AVE.
INCORPORATED SANTA ANA, CA 92705
(949) 417-5207

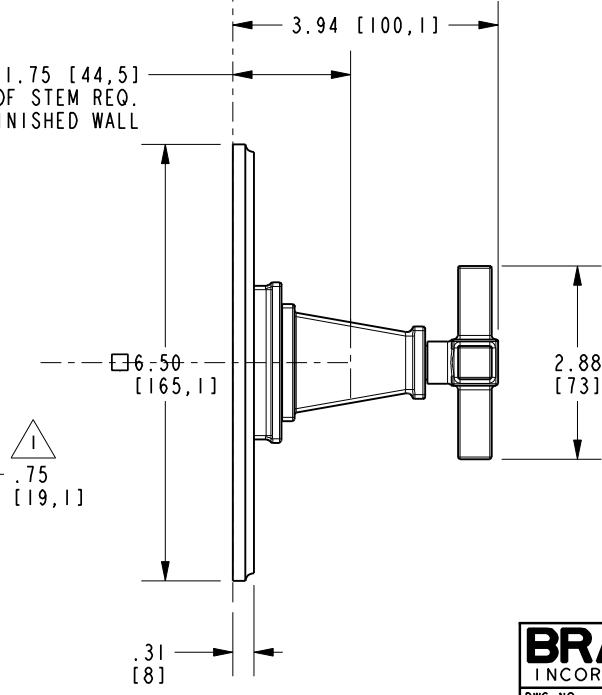
DWG NO.	3-3154BP	REV	-
SCALE .375	REF. -	SHEET 2	OF 3

NOTES:

1. CUT ALL-THREAD .75" SHORTER THAN STEM.



1.75 [44,5]
AMOUNT OF STEM REQ.
FROM FINISHED WALL



1
.75 [19,1]

BRASSTECH		2001 E. CARNEGIE AVE. SANTA ANA, CA 92705 (949) 417-5207	
DWG NO.	3-3154BP		REV -
SCALE .350	REF. -	SHEET 3 OF 3	