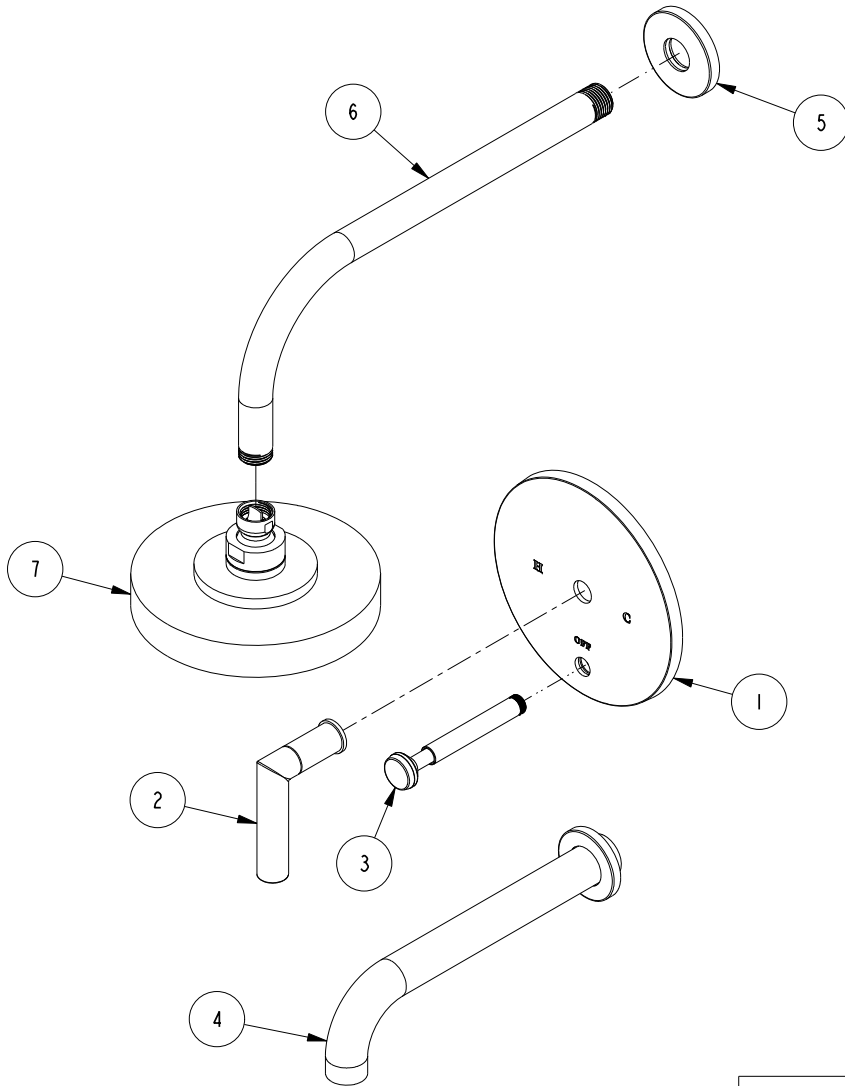


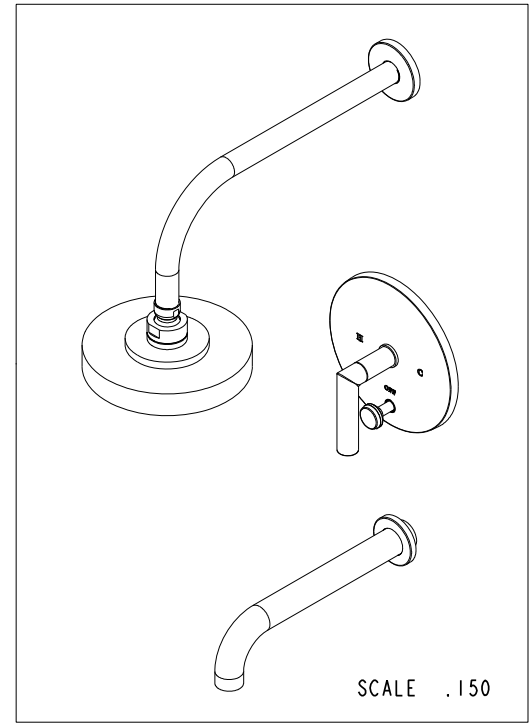
NOTES:

(N1) 1. FIT / FORM / FUNCTION SHALL FOLLOW PS-E.008.



**BILL OF MATERIAL (CURRENT LEVEL)**

ITEM	PT/ASSY	DESCRIPTION	TYPE	QTY.
1	2-772	TUB AND SHOWER PLATE ASM	ASSEMBLY	1
2	20-107	HANDLE ASM	ASSEMBLY	1
3	2-217	DIVERTER TRIM KIT	ASSEMBLY	1
4	3-419	SPOUT & ESCUTCHEON ASM - WALL MOUNT TUB	ASSEMBLY	1
5	206-1	SHOWER - ESCUTCHEON ASM	ASSEMBLY	1
6	50823	90° 12" SHWR ARM	PART	1
7	2141	CONTEMP. SHOWER HEAD - SINGLE JET	ASSEMBLY	1



TESTING	-	-	-
ASSEMBLY	-	-	-
PLATING	-	-	-
POLISHING	-	NEXT ASSY	USED ON
MACHINING	-	APPLICATION	
TOOLING FIXTURE #	REMOVE ALL BURRS AND SHARP EDGES		

UNITS ARE: INCHES [MM]  
 TOLERANCES ARE:  
 FRACTIONS DECIMALS ANGLES  
 $\pm 1/16"$   $.X \pm .1 [2.5]$   $\pm 1^\circ$   
 $.XX \pm .06 [1.5]$   
 (X.XXX) DENOTES CRITICAL DIMS.  
 ALL THREADS ARE CRITICAL

**BRASSTECH** 2001 CARNEGIE AVE.  
 INCORPORATED SANTA ANA, CA 92705  
 (949) 417-5207

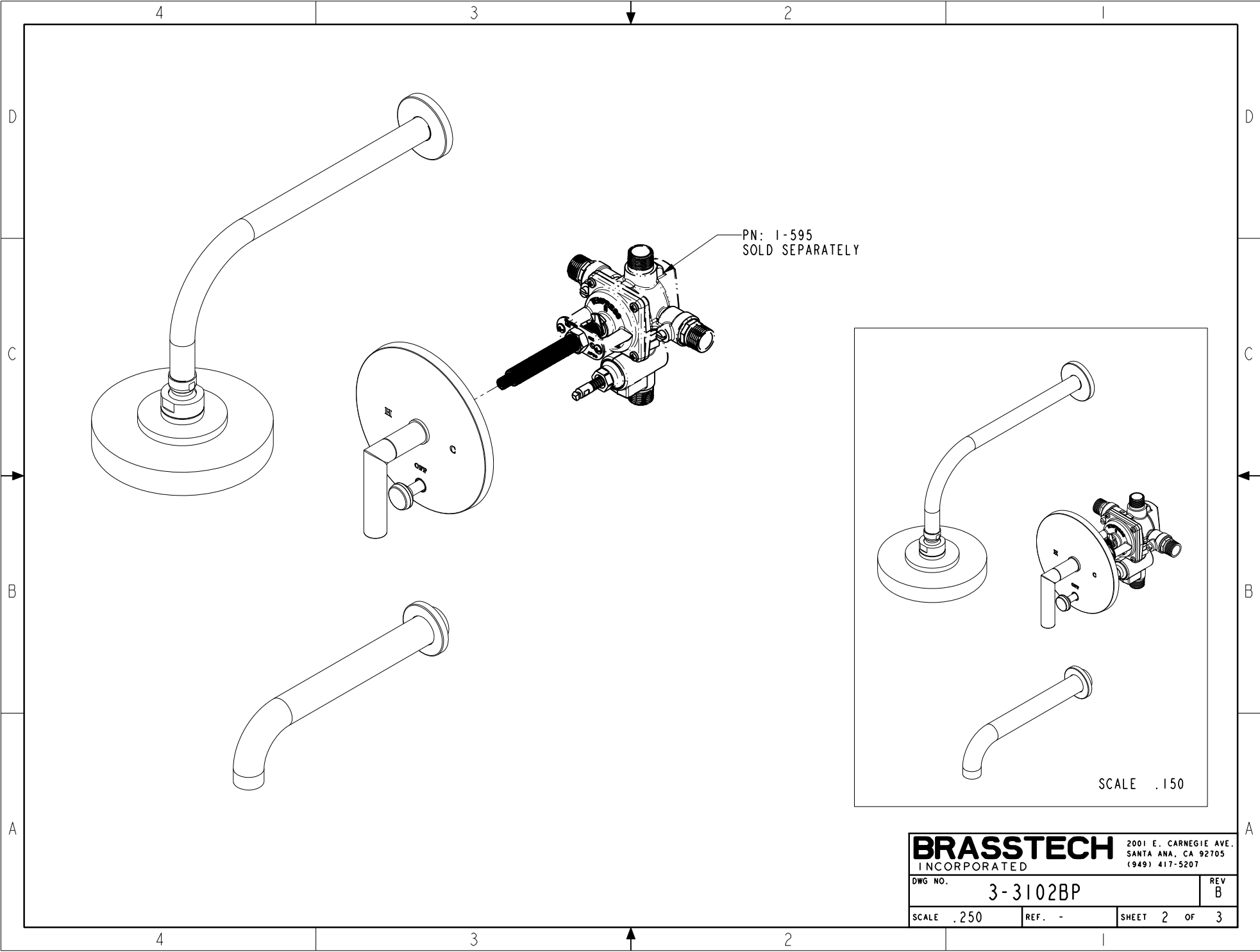
**BP TUB & SHOWER TRIM SET**

ZONE	REV	DESCRIPTION	DATE	APPROVED
-	B	EN-3296	03/30/17	J.M.
-	A	EN-3254	02/02/17	AN
-	-	EN-3032d	07/13/16	AN

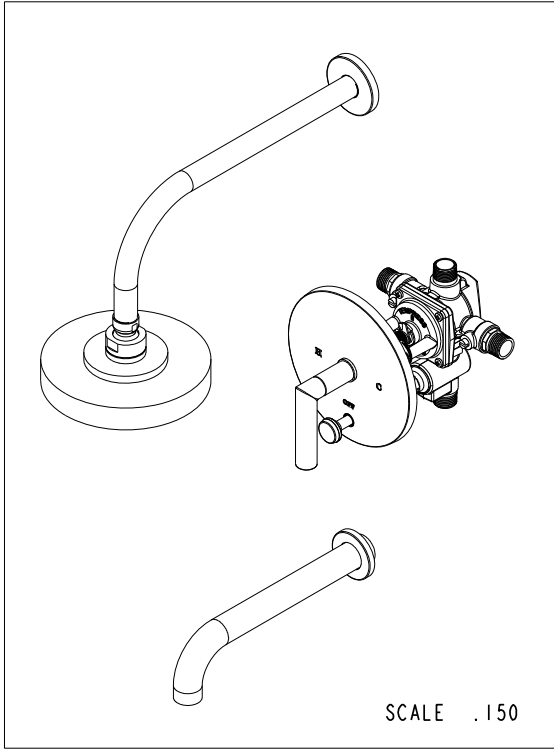
COPYRIGHT 2005 BRASSTECH, INC.  
 THESE DRAWINGS AND THE DESIGNS  
 DEPICTED HEREIN ARE THE PROPRIETARY  
 PROPERTY OF BRASSTECH. ANY USE  
 OR REPRODUCTION IS SUBJECT TO  
 THE EXPRESS APPROVAL OF BRASSTECH.  
 UNAUTHORIZED USE IS STRICTLY  
 PROHIBITED. ALL RIGHTS RESERVED.

DRAWN	AN	07/13/16
CHECKED	AN	07/13/16
APPROVED	AN	07/13/16

DWG NO.	3-3102BP	REV	B
SCALE	.220	REF.	-
SHEET	1	OF	3



PN: 1-595  
SOLD SEPARATELY

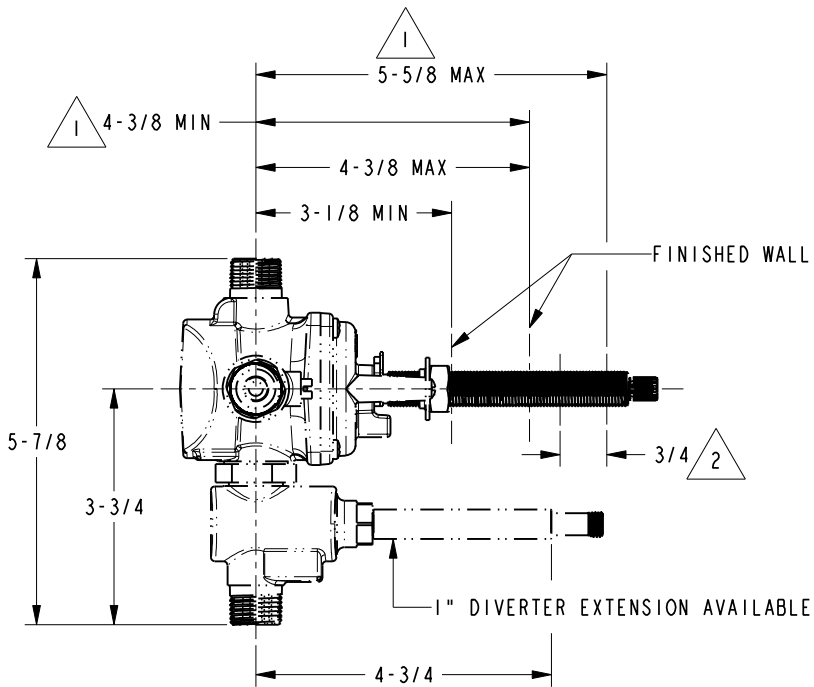
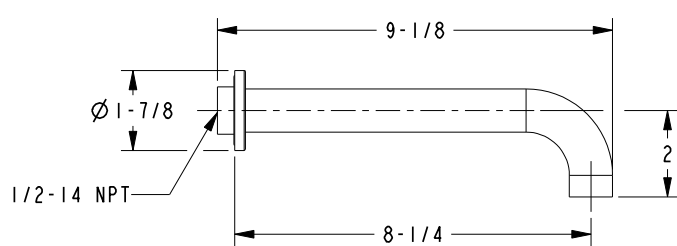
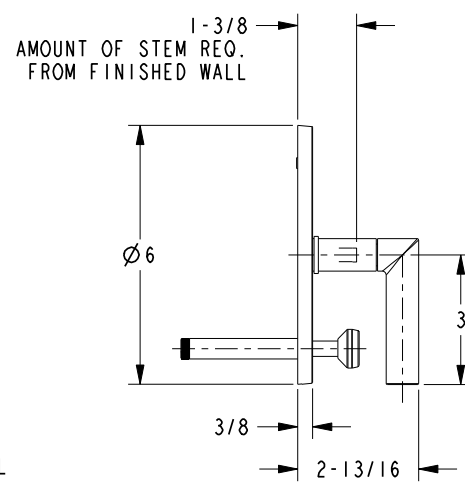
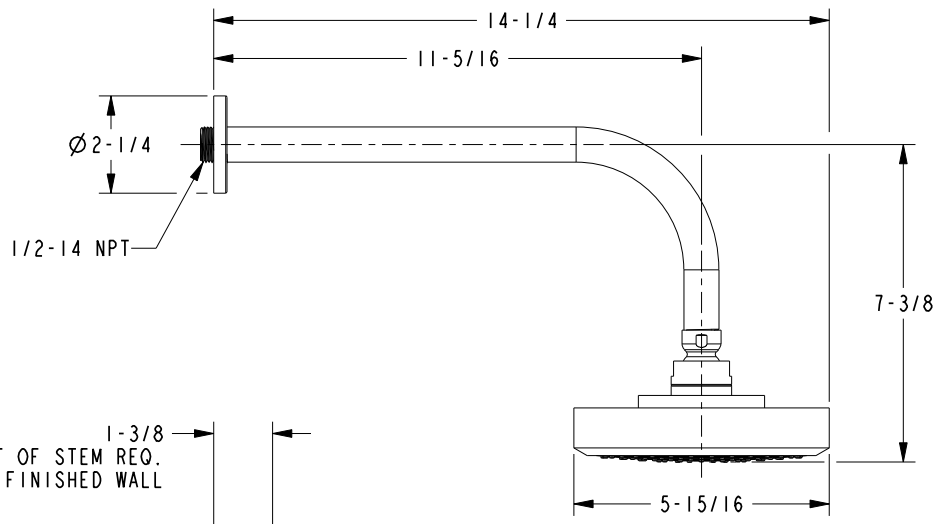
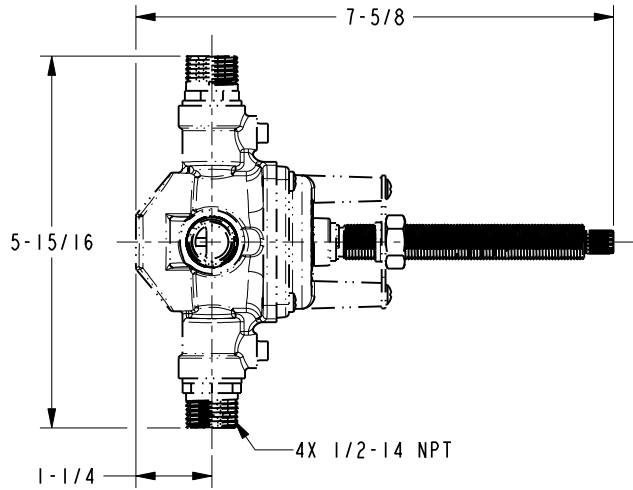


SCALE .150

<b>BRASSTECH</b>		2001 E. CARNEGIE AVE.	
INCORPORATED		SANTA ANA, CA 92705	
		(949) 417-5207	
DWG NO.	3-3102BP		REV B
SCALE .250	REF. -	SHEET 2 OF 3	

NOTES:

- 1. CUT STEM TO DIMENSION SHOWN.
- 2. CUT ALL-THREAD 3/4" SHORTER THAN STEM.



<b>BRASSTECH</b>		2001 E. CARNEGIE AVE. SANTA ANA, CA 92705 (949) 417-5207	
INCORPORATED			
DWG NO.	3-3102BP		REV B
SCALE .250	REF. -	SHEET 3 OF 3	