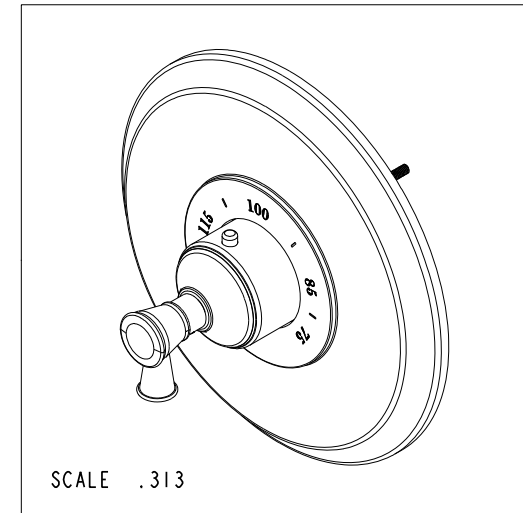
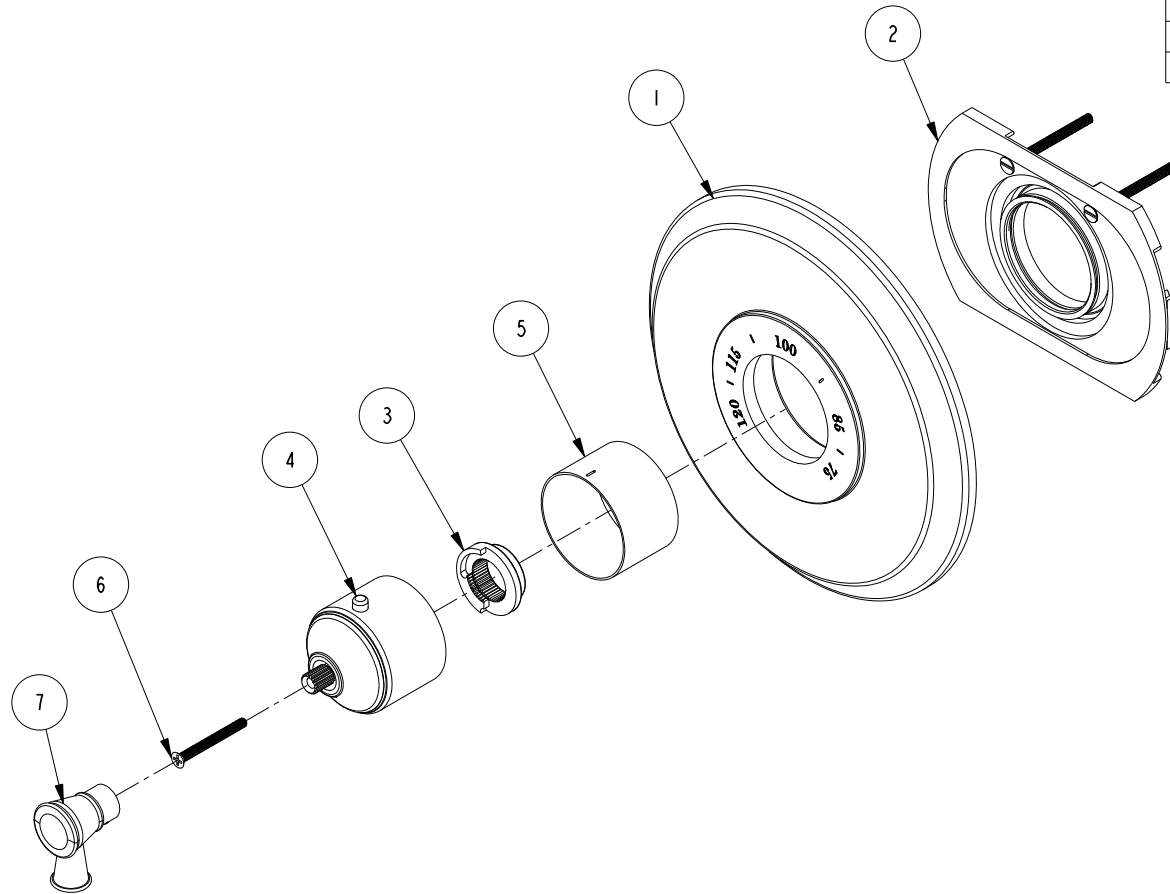


NOTES:

(N1) 1. FIT / FORM / FUNCTION SHALL FOLLOW PS-E.008.

BILL OF MATERIAL (CURRENT LEVEL)

| ITEM | PT/ASSY | DESCRIPTION | TYPE | QTY. |
|------|---------|----------------------------------|----------|------|
| 1 | 12119 | THERMO PLATE | PART | 1 |
| 2 | 1-331 | THERMO WALL PLATE ASM | ASSEMBLY | 1 |
| 3 | 91308 | TEMP LIMIT STOP - THERMO | PART | 1 |
| 4 | 2-683 | THERMO BONNET ASM | ASSEMBLY | 1 |
| 5 | 11029 | SLEEVE - THERMO | PART | 1 |
| 6 | 92113 | SCRW, M4 X .7 X 40 PHL FLT HD SS | PART | 1 |
| 7 | 20-149 | THERMO LEVER HANDLE ASM | ASSEMBLY | 1 |



COPYRIGHT 2005 BRASSTECH, INC.
THESE DRAWINGS AND THE DESIGNS
DEPICTED HEREIN ARE THE PROPRIETARY
PROPERTY OF BRASSTECH. ANY USE
OR REPRODUCTION IS SUBJECT TO
THE EXPRESS APPROVAL OF BRASSTECH.
UNAUTHORIZED USE IS STRICTLY
PROHIBITED. ALL RIGHTS RESERVED.

| | | | |
|-----------|-----------|----------------------------------|---------|
| TESTING | - | - | - |
| ASSEMBLY | - | - | - |
| PLATING | - | - | - |
| POLISHING | - | NEXT ASSY | USED ON |
| MACHINING | - | APPLICATION | |
| TOOLING | FIXTURE # | REMOVE ALL BURRS AND SHARP EDGES | |

| | |
|--------------------------------|----------------|
| UNITS ARE: INCHES [MM] | |
| TOLERANCES ARE: | |
| FRACTIONS | DECIMALS |
| ±1/16" | .X ±.1 [2.5] |
| | .XX ±.06 [1.5] |
| ANGLES ±1° | |
| (X.XXX) DENOTES CRITICAL DIMS. | |
| ALL THREADS ARE CRITICAL | |
| DRAWN | R.S. 12/08/15 |
| CHECKED | J.M. 12/08/15 |
| APPROVED | J.M. 12/08/15 |

BRASSTECH 2001 CARNEGIE AVE.
INCORPORATED SANTA ANA, CA 92705
(949) 417-5207

3/4" THERMO TRIM

| | | | |
|---------|----------|------|---|
| DWG NO. | 3-2914TR | REV | - |
| SCALE | .313 | REF. | - |
| SHEET | 1 | OF | 3 |

| | | |
|---------|----------|-------------|
| EN-2982 | 12/08/15 | J.M. |
| ZONE | REV | DESCRIPTION |
| 4 | | |

4

3

2

D

D

C

C

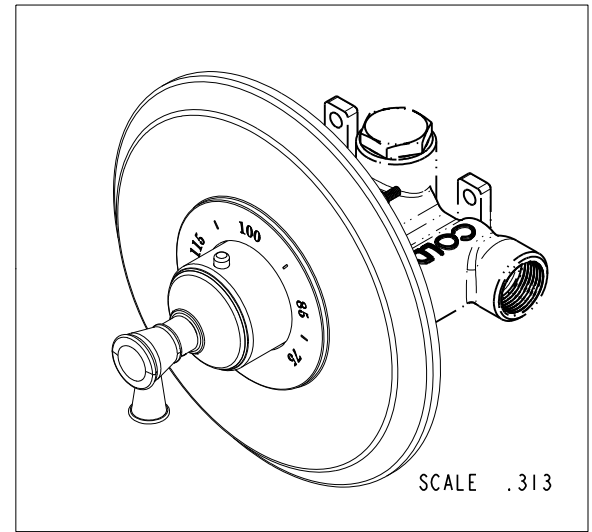
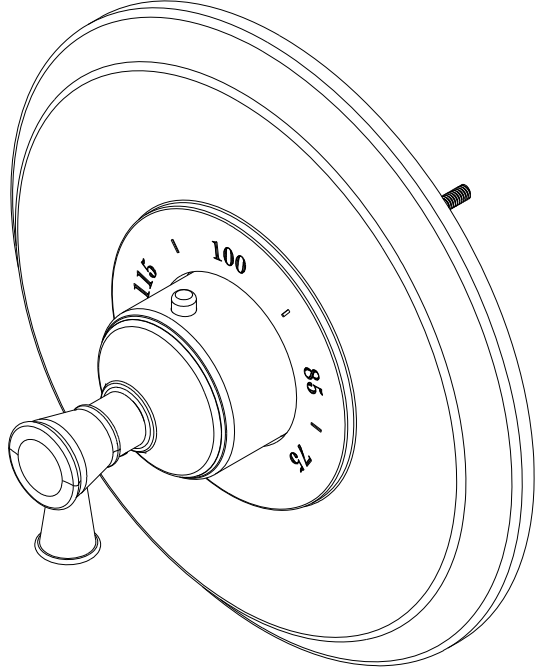
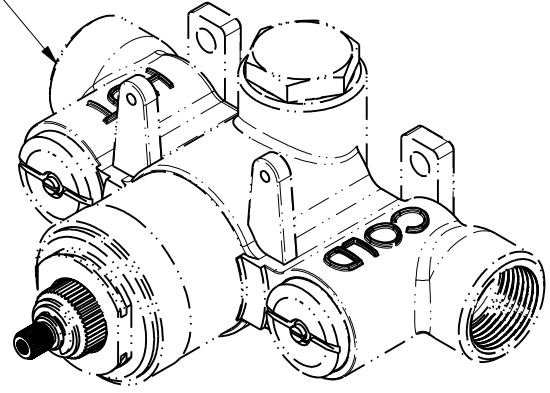
B

B

A

A

PN: 1-540 SOLD IT SEPARATELY

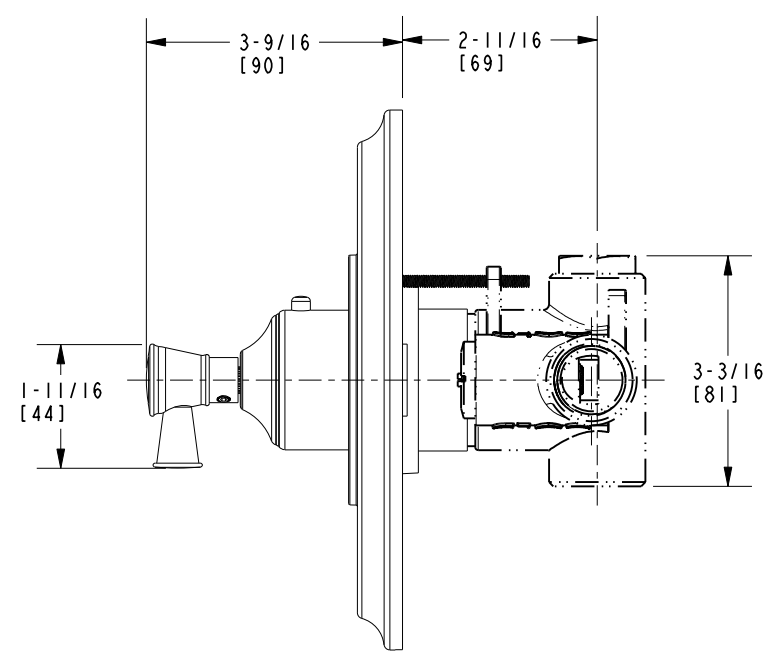
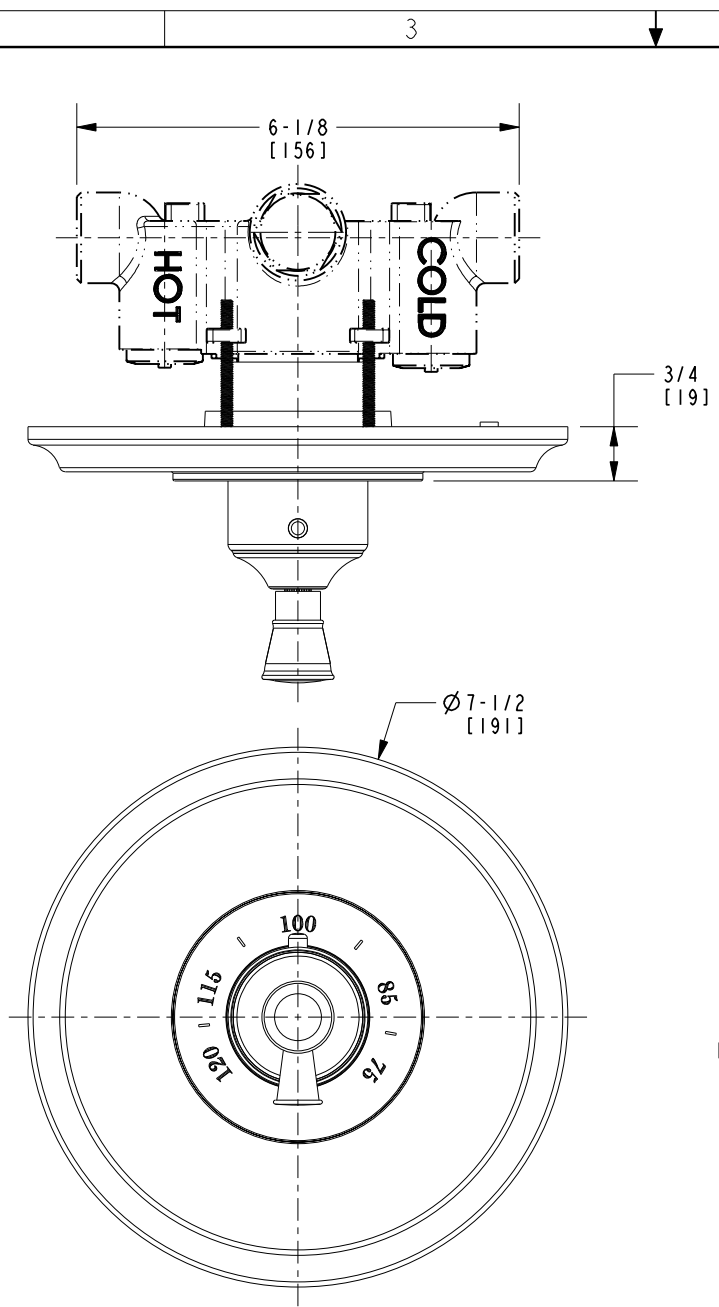


| | | | |
|------------------|----------|-----------------------|--------|
| BRASSTECH | | 2001 E. CARNEGIE AVE. | |
| INCORPORATED | | SANTA ANA, CA 92705 | |
| | | (949) 417-5207 | |
| DWG NO. | 3-2914TR | REV | - |
| SCALE | .500 | REF. | - |
| | | SHEET | 2 OF 3 |

4

3

2



| | | | |
|------------------|----------|-----------------------|-------|
| BRASSTECH | | 2001 E. CARNEGIE AVE. | |
| INCORPORATED | | SANTA ANA, CA 92705 | |
| | | (949) 417-5207 | |
| DWG NO. | 3-2914TR | | REV - |
| SCALE .375 | REF. - | SHEET 3 OF 3 | |