

4

3

2

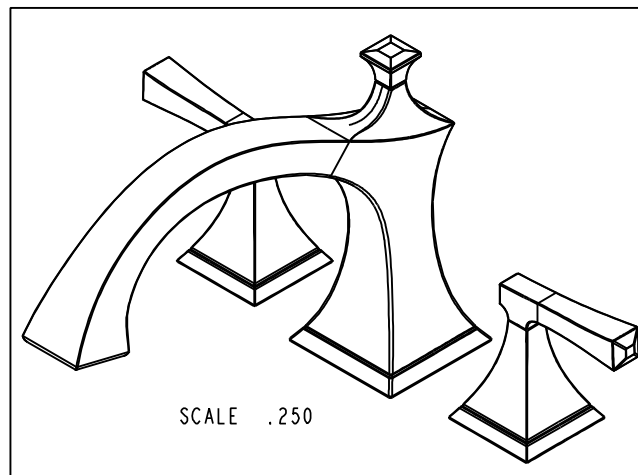
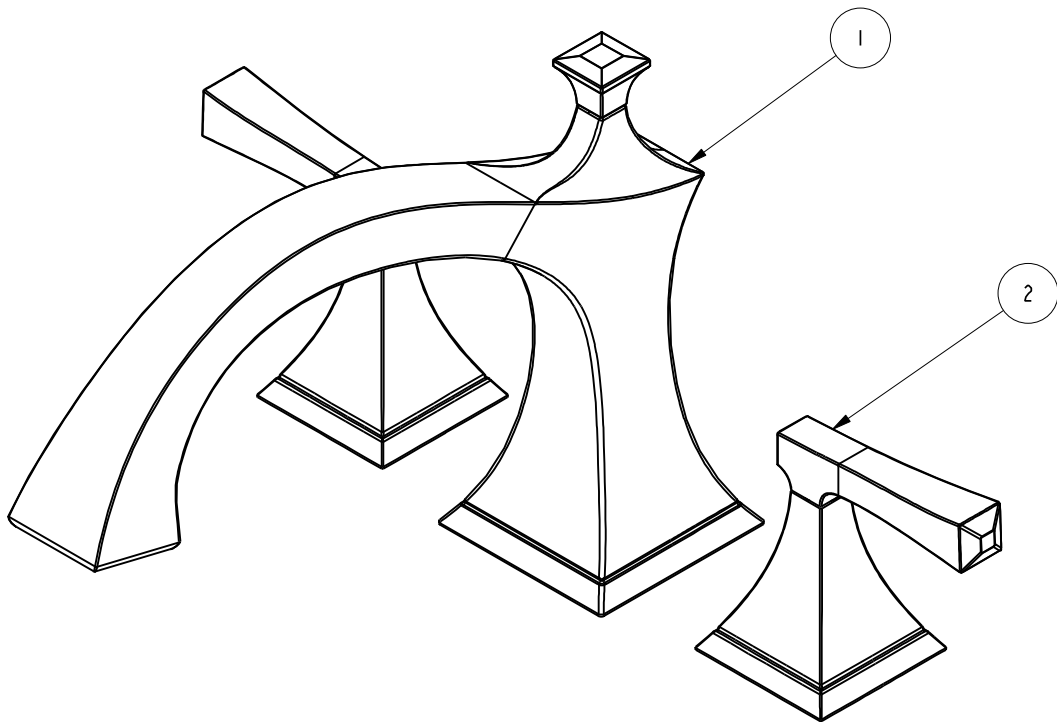
1

NOTES:

(NI) 1. FIT / FORM / FUNCTION SHALL FOLLOW PS-E.008.

BILL OF MATERIAL (CURRENT LEVEL)

ITEM	PT/ASSY	DESCRIPTION	TYPE	QTY.
1	20-129	R/T SPOUT ASM	ASSEMBLY	1
2	3-594	LEVER HANDLE W/ESC.	ASSEMBLY	2



D

C

B

A

D

C

B

A

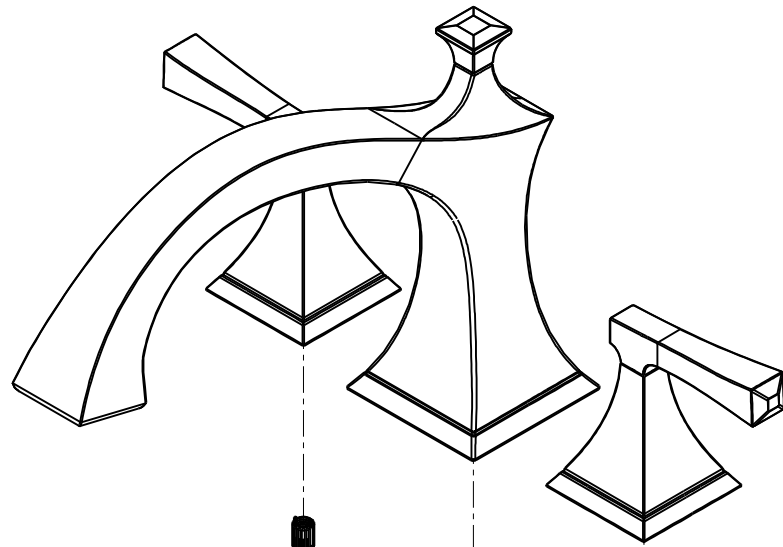
					UNITS ARE: INCHES [MM]		BRASSTECH 2001 CARNEGIE AVE. SANTA ANA, CA 92705 (949) 417-5207				
					TOLERANCES ARE:						
					TESTING	-	-	FRACTIONS DECIMALS ANGLES			
					ASSEMBLY	-	-	$\pm 1/16"$ $\pm 1^\circ$			
					PLATING	-	-	.X $\pm .1$ [2,5] .XX $\pm .06$ [1,5]			
					POLISHING	-	NEXT ASSY USED ON	(X.XXX) DENOTES CRITICAL DIMS. ALL THREADS ARE CRITICAL			
					MACHINING	-	APPLICATION	DRAWN VINAY 11/09/16			
-	B	EN-3185	11/09/16	R.S	COPYRIGHT 2005 BRASSTECH, INC. THESE DRAWINGS AND THE DESIGNS DEPICTED HEREIN ARE THE PROPRIETARY PROPERTY OF BRASSTECH. ANY USE OR REPRODUCTION IS SUBJECT TO THE EXPRESS APPROVAL OF BRASSTECH. UNAUTHORIZED USE IS STRICTLY PROHIBITED. ALL RIGHTS RESERVED.			DWG NO. 3-2576	REV B		
-	A	EN-3102	07/26/16	J.M				CHECKED RAVINDRA 11/09/16	SCALE .403	REF.	SHEET 1 OF 3
-	-	EN-2367b	05/26/15	J.M				APPROVED R.S 11/09/16			
ZONE	REV	DESCRIPTION	DATE	APPROVED	TOOLING FIXTURE #	REMOVE ALL BURRS AND SHARP EDGES					

4

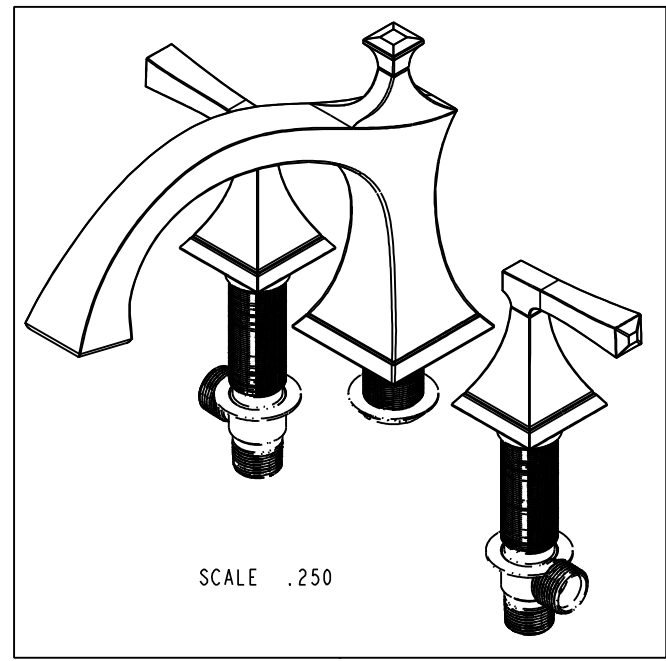
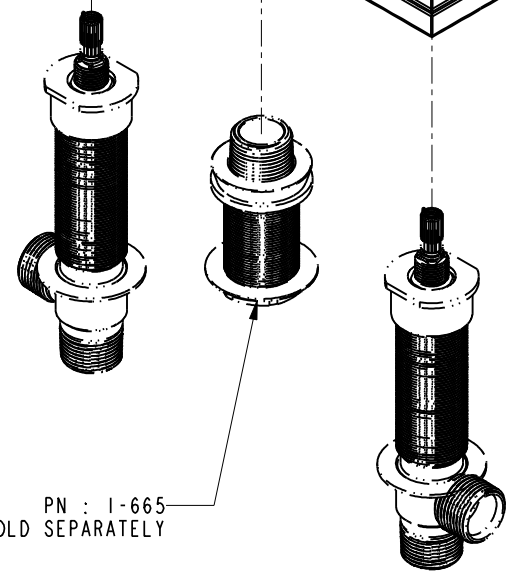
3

2

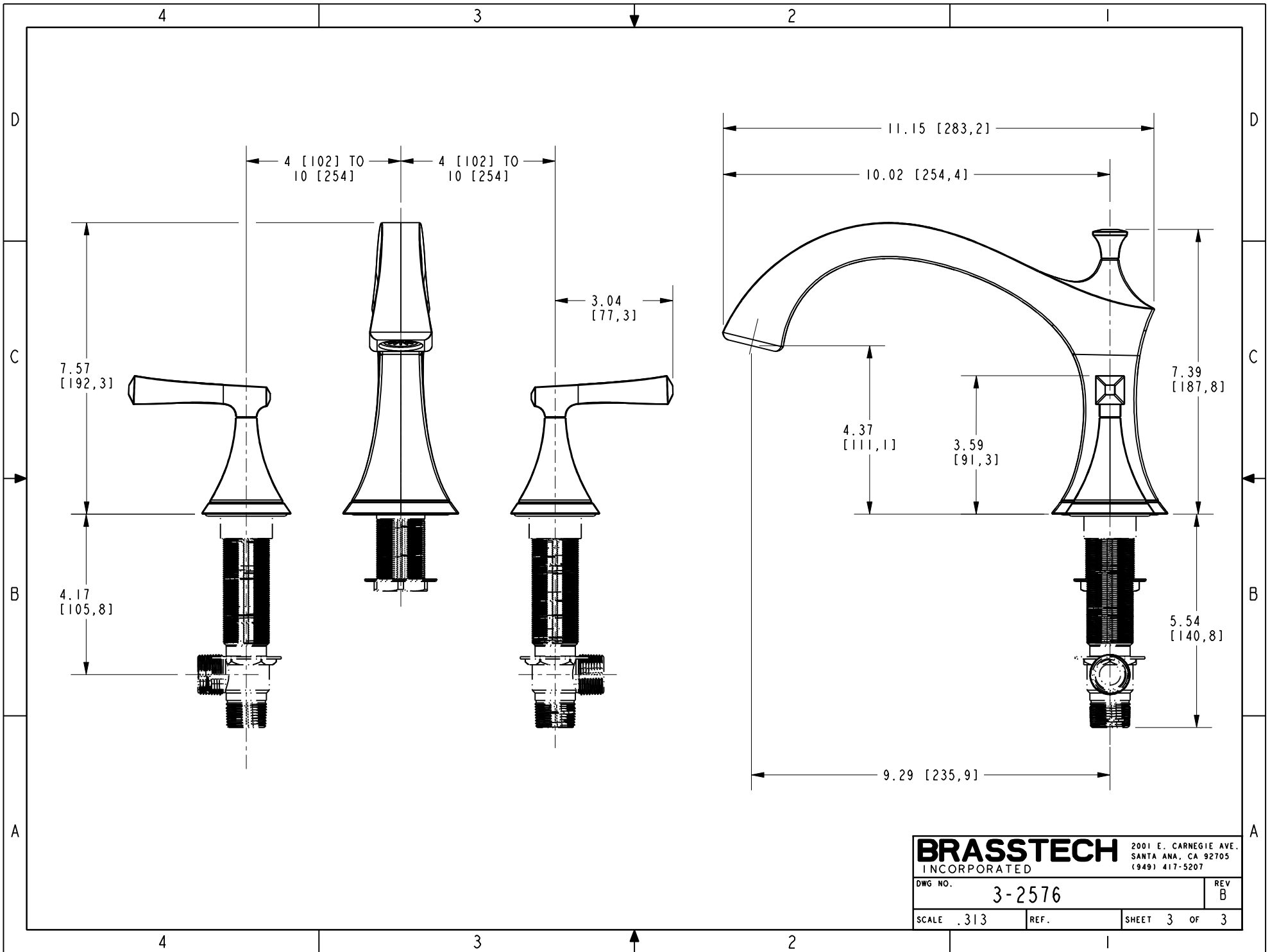
1



PN : 1-665
SOLD SEPARATELY



BRASSTECH		2001 E. CARNEGIE AVE.	
INCORPORATED		SANTA ANA, CA 92705	
		(949) 417-5207	
DWG NO.	3-2576	REV	B
SCALE .313	REF.	SHEET 2 OF 3	



BRASSTECH		2001 E. CARNEGIE AVE.
INCORPORATED		SANTA ANA, CA 92705
		(949) 417-5207
DWG NO.	3-2576	REV B
SCALE .313	REF.	SHEET 3 OF 3