

4

3

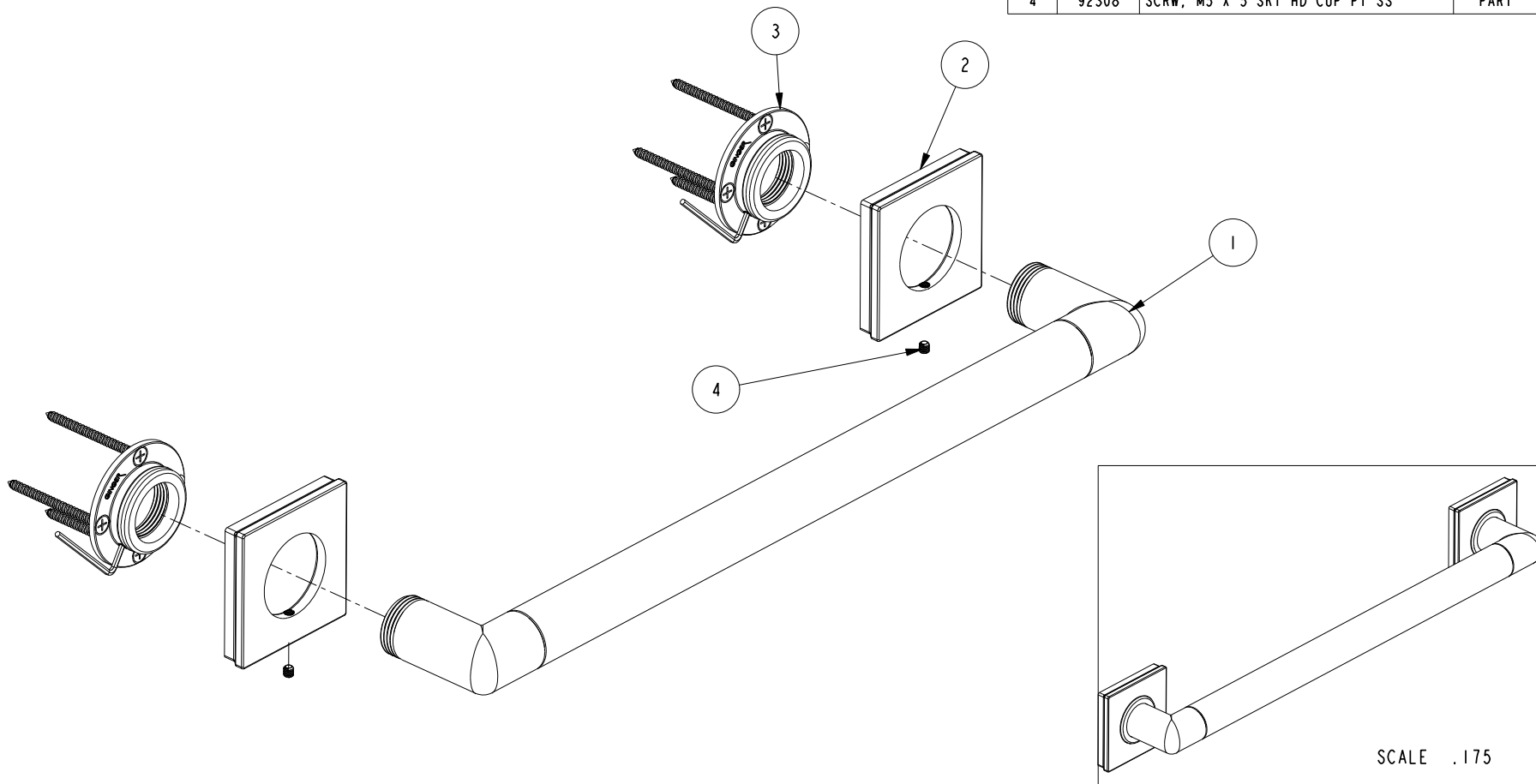
2

NOTES:

(N1) 1. FIT / FORM / FUNCTION SHALL FOLLOW PS-E.008.

BILL OF MATERIAL (CURRENT LEVEL)

ITEM	PT/ASSY	DESCRIPTION	TYPE	QTY.
1	5082SO	18" GRAB BAR BRAZE ASM	ASSEMBLY	1
2	40679	DECORATIVE RING	PART	2
3	20-287	GRAB BAR MOUNTING HARDWARE PACK	ASSEMBLY	2
4	92308	SCRW, M5 X 5 SKT HD CUP PT SS	PART	2



SCALE .175

TESTING	-	-	-	UNITS ARE: INCHES [MM]
ASSEMBLY	-	-	-	TOLERANCES ARE:
PLATING	-	-	-	FRACTIONS DECIMALS ANGLES
POLISHING	-	-	-	±1/16" .X ±.1 [2,5] ±1°
MACHINING	-	NEXT ASSY	USED ON	(X.XXX) DENOTES CRITICAL DIMS. ALL THREADS ARE CRITICAL
TOOLING FIXTURE #	REMOVE ALL BURRS AND SHARP EDGES			DRAWN R.S. 04/17/17
				CHECKED J.M. 04/17/17
				APPROVED J.M. 04/17/17

BRASSTECH 2001 CARNEGIE AVE.
INCORPORATED SANTA ANA, CA 92705
(949) 417-5207

GRAB BAR 18"

DWG NO.	3140-3918	REV	-
SCALE	.312	REF.	-
SHEET	1	OF	2

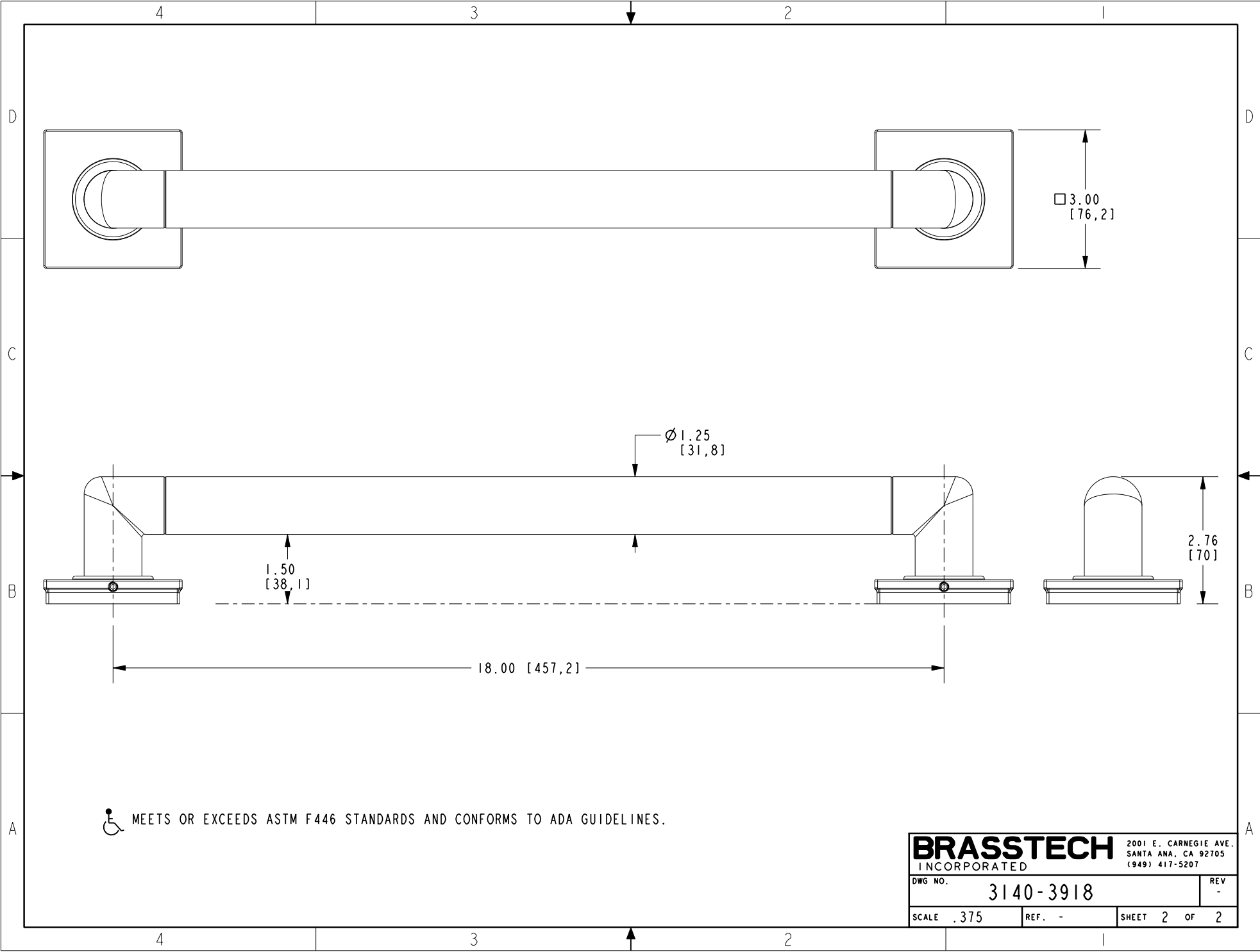
COPYRIGHT 2005 BRASSTECH, INC.
THESE DRAWINGS AND THE DESIGNS
DEPICTED HEREIN ARE THE PROPRIETARY
PROPERTY OF BRASSTECH. ANY USE
OR REPRODUCTION IS SUBJECT TO
THE EXPRESS APPROVAL OF BRASSTECH.
UNAUTHORIZED USE IS STRICTLY
PROHIBITED. ALL RIGHTS RESERVED.

EN-3279b	04/17/17	J.M.
ZONE	REV	DESCRIPTION
4		

4

3

2



□ 3.00
[76,2]

∅ 1.25
[31,8]

1.50
[38,1]

2.76
[70]

18.00 [457,2]

 MEETS OR EXCEEDS ASTM F446 STANDARDS AND CONFORMS TO ADA GUIDELINES.

BRASSTECH		2001 E. CARNEGIE AVE.	
INCORPORATED		SANTA ANA, CA 92705	
DWG NO. 3140-3918		REV -	
SCALE .375	REF. -	SHEET 2 OF 2	