

4

3

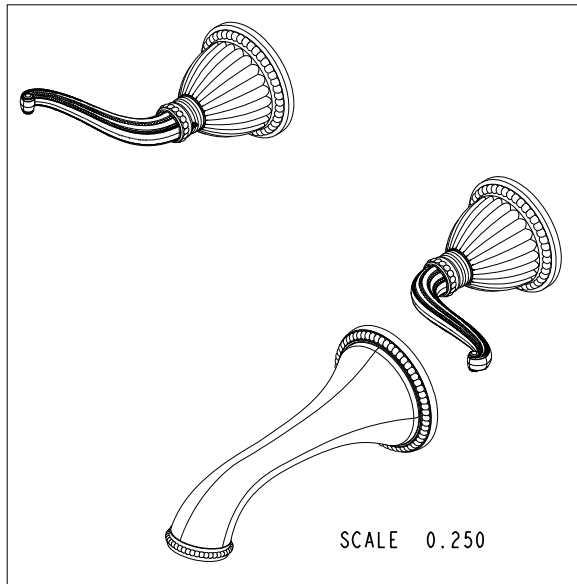
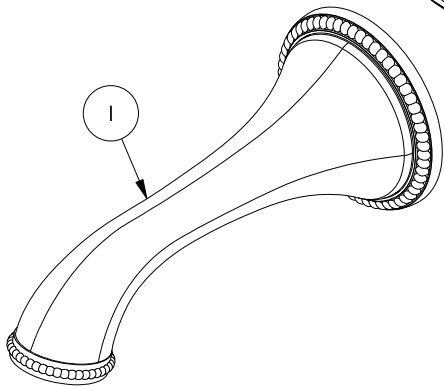
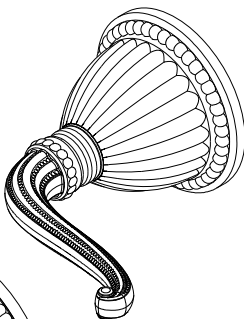
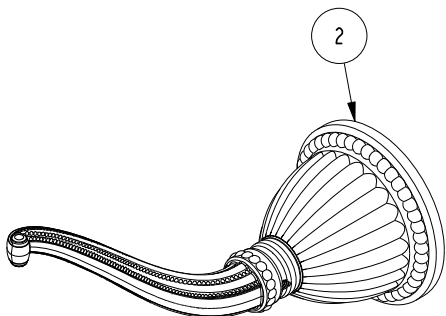
2

NOTES:

(N1) 1. FIT / FORM / FUNCTION SHALL FOLLOW PS-E.008.

BILL OF MATERIAL (CURRENT LEVEL)

| ITEM | PT/ASSY | DESCRIPTION | TYPE | QTY. |
|------|---------|-------------------------|----------|------|
| 1 | 2-249A | WALL TUB SPOUT ASM | ASSEMBLY | 1 |
| 2 | 3-248 | TRIM KIT - HANDLE / ESC | ASSEMBLY | 2 |



SCALE 0.250

COPYRIGHT 2005 BRASSTECH, INC.
 THESE DRAWINGS AND THE DESIGNS
 DEPICTED HEREIN ARE THE PROPRIETARY
 PROPERTY OF BRASSTECH. ANY USE
 OR REPRODUCTION IS SUBJECT TO
 THE EXPRESS APPROVAL OF BRASSTECH.
 UNAUTHORIZED USE IS STRICTLY
 PROHIBITED. ALL RIGHTS RESERVED.

| - | A | EN-3072 | 06/17/16 | J.M. |
|------|-----|-------------|----------|----------|
| - | - | REALSED | - | - |
| ZONE | REV | DESCRIPTION | DATE | APPROVED |

| | | | |
|-------------------|----------------------------------|-------------|---------|
| TESTING | - | - | - |
| ASSEMBLY | - | - | - |
| PLATING | - | - | - |
| POLISHING | - | NEXT ASSY | USED ON |
| MACHINING | - | APPLICATION | |
| TOOLING FIXTURE # | REMOVE ALL BURRS AND SHARP EDGES | | |

UNITS ARE: INCHES [MM]
 TOLERANCES ARE:
 FRACTIONS DECIMALS ANGLES
 $\pm 1/16"$.X $\pm .1$ [2.5] $\pm 1^\circ$
 .XX $\pm .06$ [1.5]
 (X.XXX) DENOTES CRITICAL DIMS.
 ALL THREADS ARE CRITICAL

BRASSTECH 2001 CARNEGIE AVE.
 INCORPORATED SANTA ANA, CA 92705
 (949) 417-5207

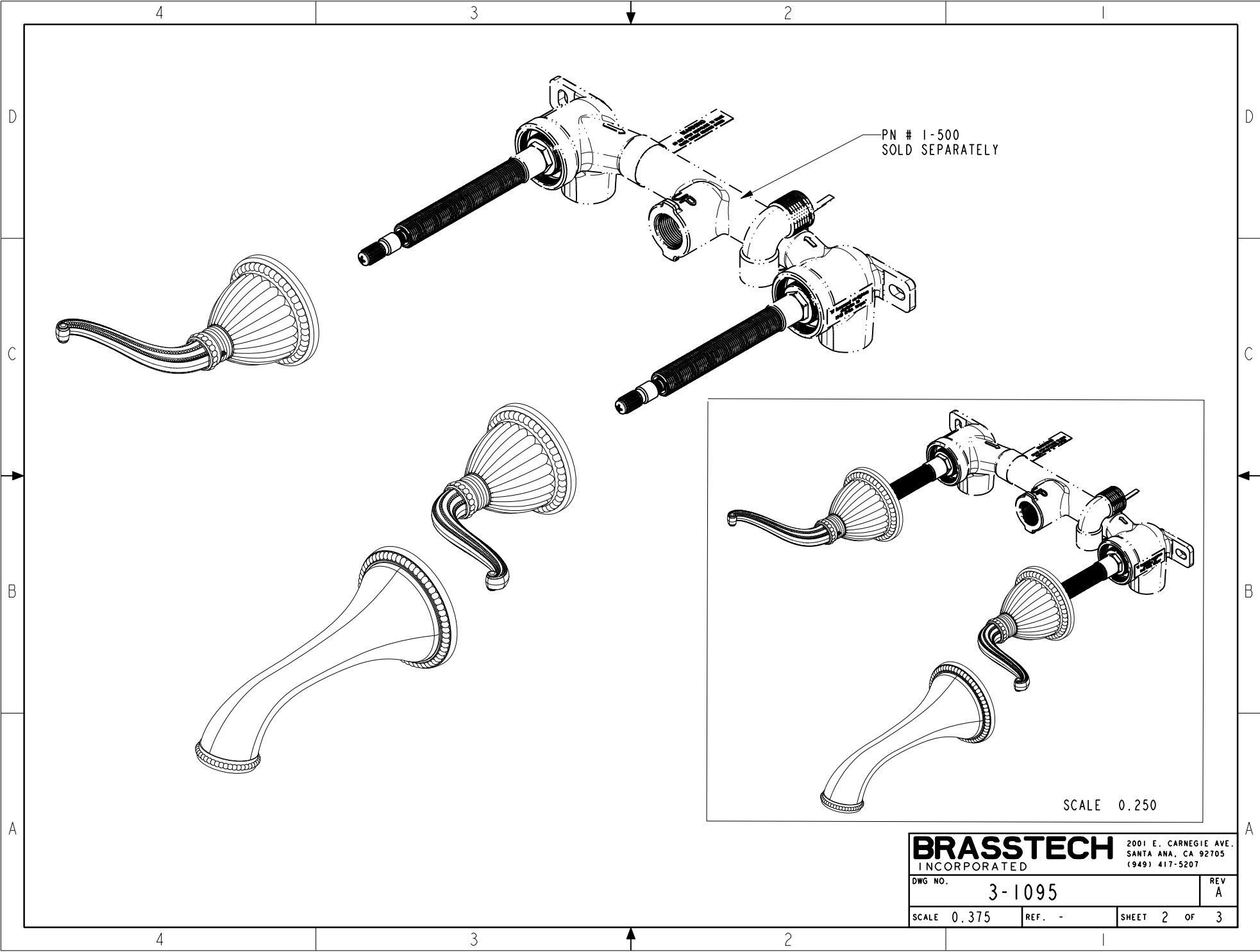
TRIM KIT - 3-1095

| | | | |
|---------|--------|------|---|
| DWG NO. | 3-1095 | REV | A |
| SCALE | 0.400 | REF. | - |
| SHEET | 1 | OF | 3 |

4

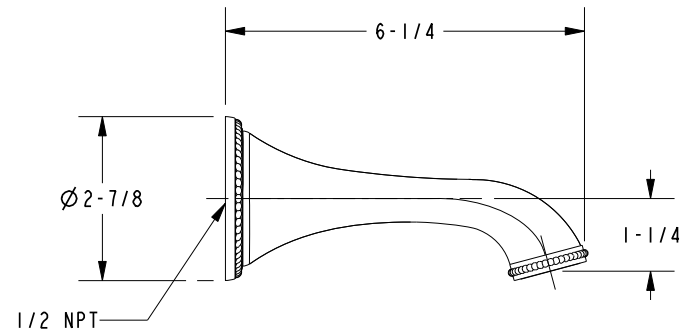
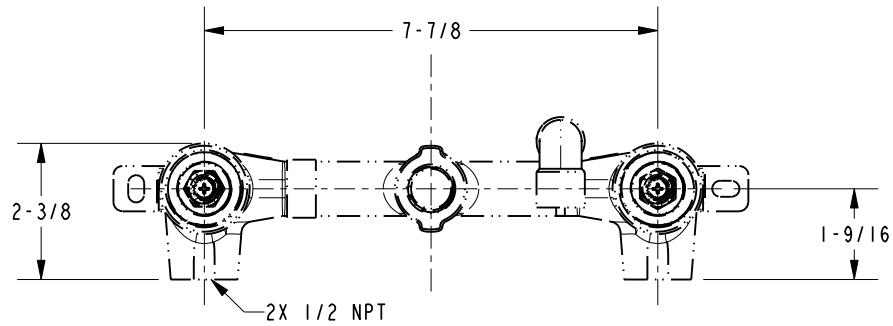
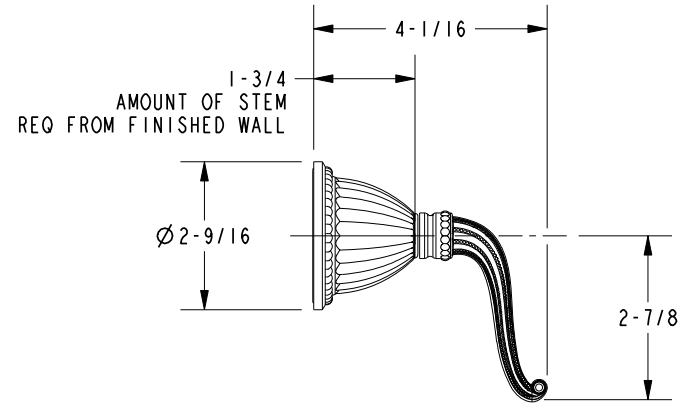
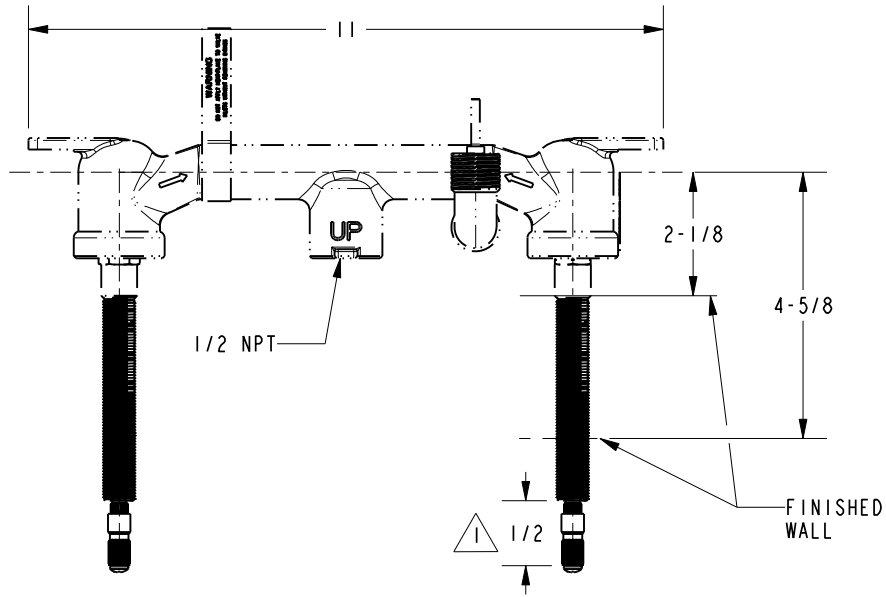
3

2



NOTE:

⚠ CUT ALL-THREAD 1/2" SHORTER THAN STEM.



| | | | |
|------------------|--------|--|--------|
| BRASSTECH | | 2001 E. CARNEGIE AVE. SANTA ANA, CA 92705 (949) 417-5207 | |
| DWG NO. | 3-1095 | REV | A |
| SCALE | 0.300 | REF. | - |
| | | SHEET | 3 OF 3 |