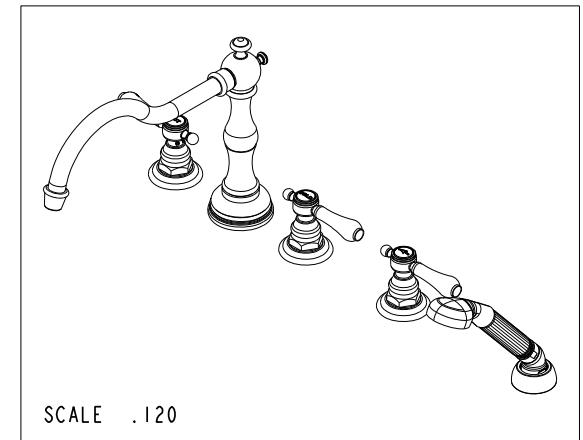
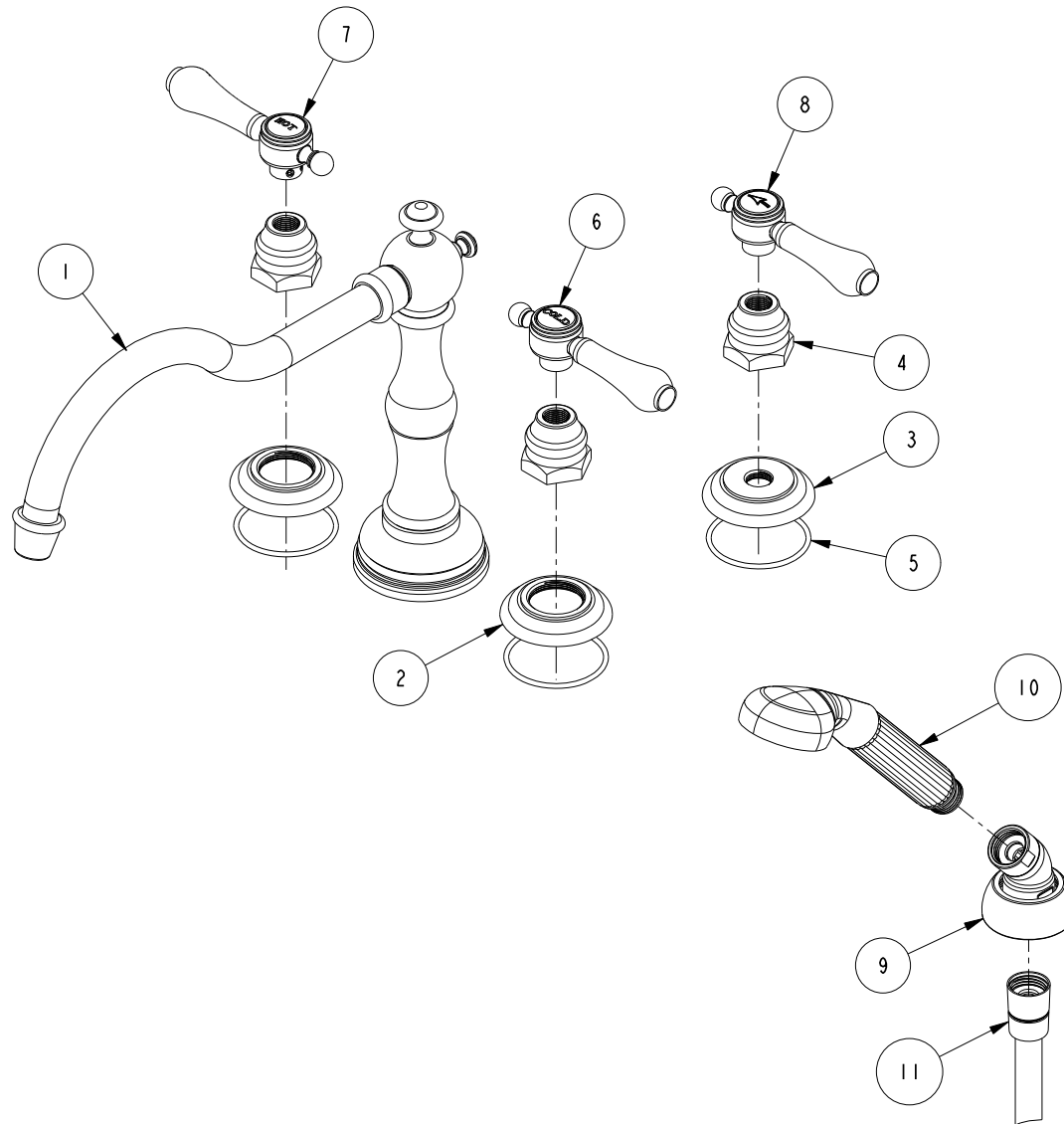


BILL OF MATERIAL (CURRENT LEVEL)

ITEM	PT/ASSY	DESCRIPTION	TYPE	QTY.
1	2-210	930 ROMAN TUB SPOUT	ASSEMBLY	1
2	12171	ESCUTCHEON, ROMAN TUB	PART	2
3	10050	ESCUTCHEON WALL VALVE	PART	1
4	10523	HEX ESCUTCHEON BONNET	PART	3
5	91231	O-RING, #2-136, EPDM, 65-75 DURO	PART	3
6	2-133	HANDLE ASSEMBLY - COLD	ASSEMBLY	1
7	2-134	HANDLE ASSEMBLY - HOT	ASSEMBLY	1
8	2-135	HANDLE ASSEMBLY - DIVERTER	ASSEMBLY	1
9	6-289	DECK FLANGE TRIM	ASSEMBLY	1
10	280	HAND SHOWER WITH GROOVE	ASSEMBLY	1
11	284	59 IN. SPIRAL SHOWER HOSE	ASSEMBLY	1



COPYRIGHT 2005 BRASSTECH, INC. THESE DRAWINGS AND THE DESIGNS DEPICTED HEREIN ARE THE PROPRIETARY PROPERTY OF BRASSTECH. ANY USE OR REPRODUCTION IS SUBJECT TO THE EXPRESS APPROVAL OF BRASSTECH. UNAUTHORIZED USE IS STRICTLY PROHIBITED. ALL RIGHTS RESERVED.

BRASSTECH
INCORPORATED

2001 E. CARNEGIE AVE.
SANTA ANA, CA 92705
(949) 417-5207

TRIM KIT, 3V ROMAN TUB SET

ASSY. NO.
3-1037

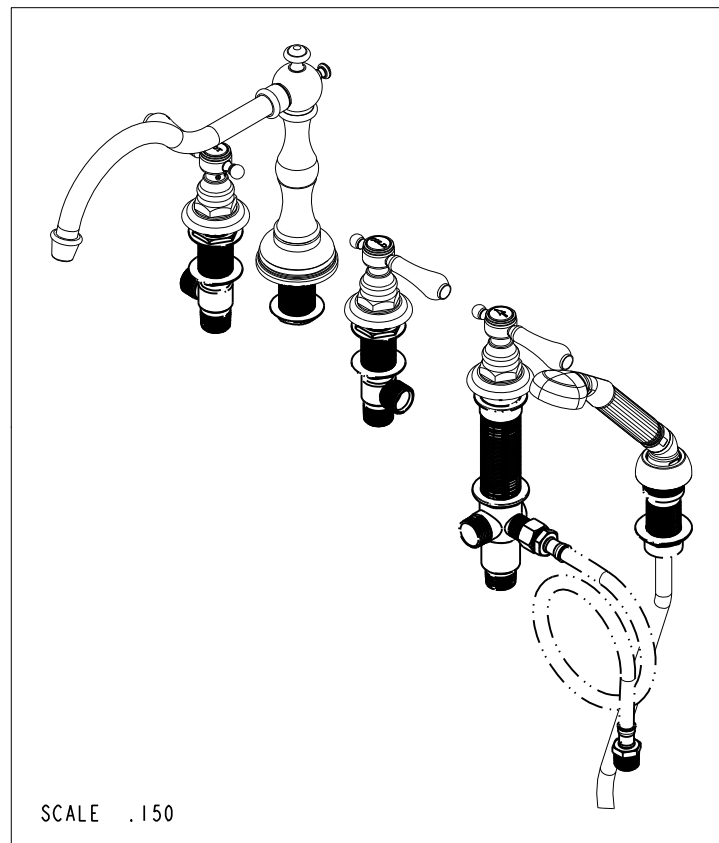
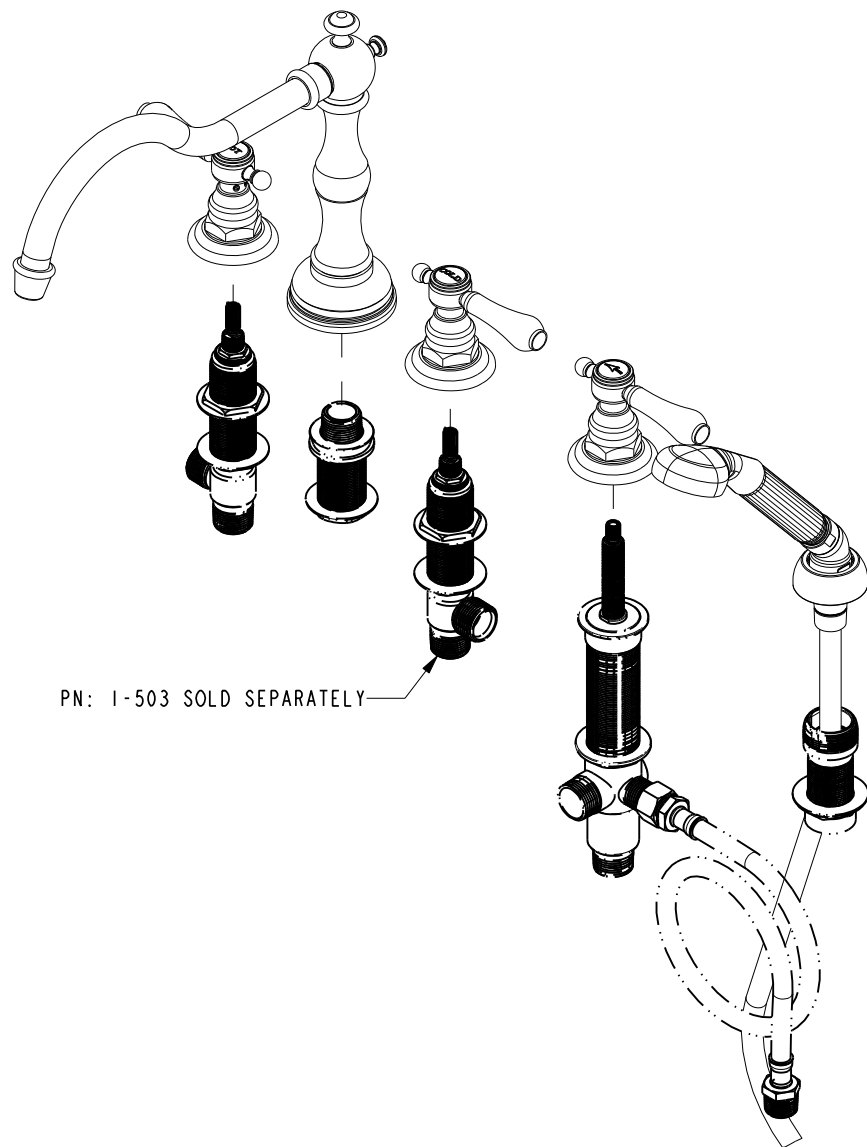
SCALE .250

REF. -

SHEET 1 OF 3

A	EN-2519	04/22/13
-	EN-2169	09/28/12
REV	REV DESC	DATE

SPECIFICATION DWG



DIMENSIONS ARE IN INCHES AND AN APPROXIMATION OF A TYPICAL INSTALLATION

COPYRIGHT 2005 BRASSTECH, INC. THESE DRAWINGS AND THE DESIGNS DEPICTED HEREIN ARE THE PROPRIETARY PROPERTY OF BRASSTECH. ANY USE OR REPRODUCTION IS SUBJECT TO THE EXPRESS APPROVAL OF BRASSTECH. UNAUTHORIZED USE IS STRICTLY PROHIBITED. ALL RIGHTS RESERVED.

BRASSTECH		2001 CARNEGIE AVE. SANTA ANA, CA 92705 (949) 417-5207	
DWG NO.	3-1037		REV A
SCALE .200	REF. -	SHEET 2 OF 3	

4 3 2 1

D

C

B

A

SPECIFICATION DWG

4 4

$\phi 2-13/16$

3-3/8

2-3/8

$\phi 2-3/8$

3-1/4

4-11/16

2-1/8

$\phi 1-1/4$

2-5/16 AMOUNT OF STEM REQ. FROM DECK

$\phi 1-3/16$

3/4 NPT

6-7/8

$\phi 1-15/16$

$\phi 1-3/16$

11-1/2

9-3/4

7-1/2

6

DIMENSIONS ARE IN INCHES AND AN APPROXIMATION OF A TYPICAL INSTALLATION

COPYRIGHT 2005 BRASSTECH, INC. THESE DRAWINGS AND THE DESIGNS DEPICTED HEREIN ARE THE PROPRIETARY PROPERTY OF BRASSTECH. ANY USE OR REPRODUCTION IS SUBJECT TO THE EXPRESS APPROVAL OF BRASSTECH. UNAUTHORIZED USE IS STRICTLY PROHIBITED. ALL RIGHTS RESERVED.

BRASSTECH INCORPORATED		2001 CARNEGIE AVE. SANTA ANA, CA 92705 (949) 417-5207
DWG NO.	3-1037	REV A
SCALE	.250	REF. -
SHEET 3 OF 3		

4 3 2 1

COPYRIGHT 2005 BRASSTECH, INC. THESE DRAWINGS AND THE DESIGNS DEPICTED HEREIN ARE THE PROPRIETARY PROPERTY OF BRASSTECH. ANY USE OR REPRODUCTION IS SUBJECT TO THE EXPRESS APPROVAL OF BRASSTECH. UNAUTHORIZED USE IS STRICTLY PROHIBITED. ALL RIGHTS RESERVED.

DWG NO.		3-1037	REV A
SCALE	250	REF. -	SHEET 3 OF 3