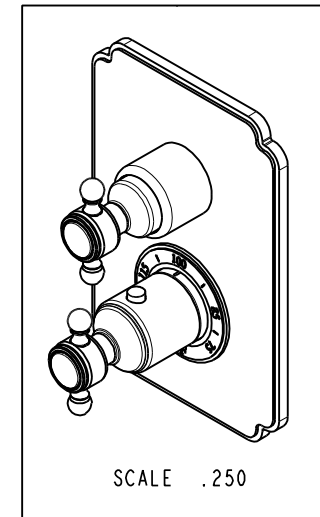
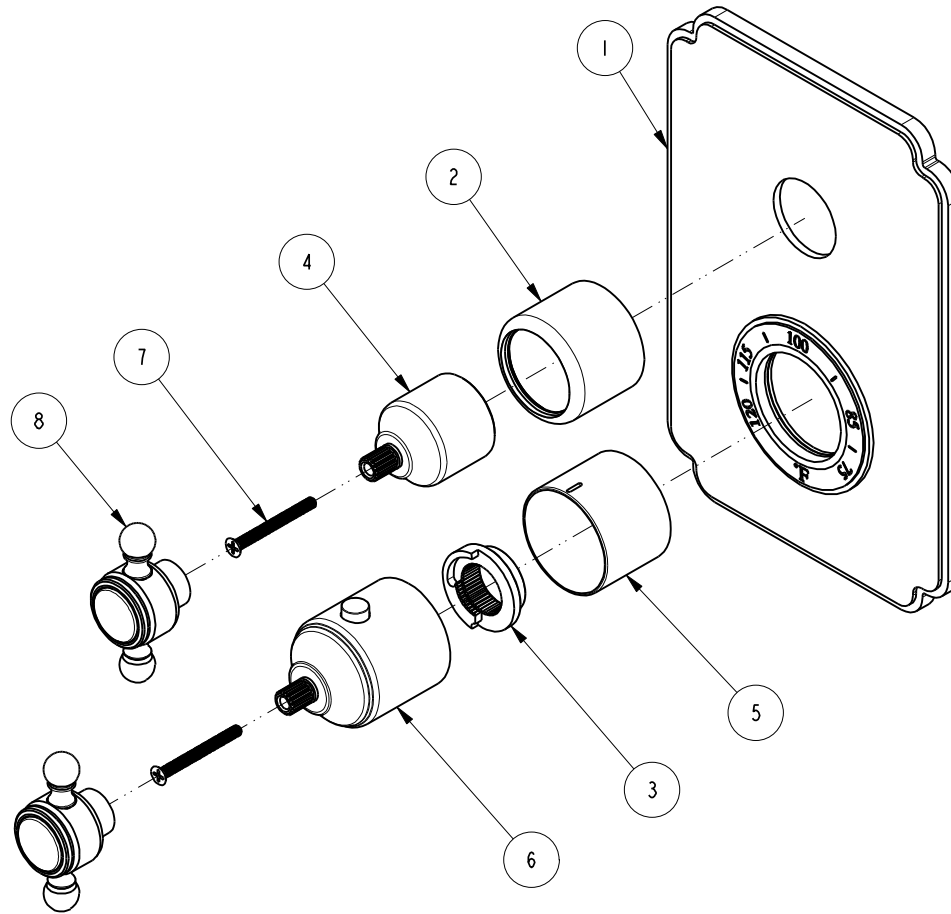


NOTES:

(N1) 1. FIT / FORM / FUNCTION SHALL FOLLOW PS-E.008.

BILL OF MATERIAL (CURRENT LEVEL)

| ITEM | PT/ASSY | DESCRIPTION | TYPE | QTY. |
|------|---------|----------------------------------|----------|------|
| 1 | 2-990 | TUB AND SHOWER PLATE ASM | ASSEMBLY | 1 |
| 2 | 2-989 | COLLAR ASM | ASSEMBLY | 1 |
| 3 | 91308 | TEMP LIMIT STOP - THERMO | PART | 1 |
| 4 | 12344 | HANDLE BONNET | PART | 1 |
| 5 | 12345 | SLEEVE - THERMO | PART | 1 |
| 6 | 2-991 | THERMO BONNET ASM | ASSEMBLY | 1 |
| 7 | 92113 | SCRW, M4 X .7 X 40 PHL FLT HD SS | PART | 2 |
| 8 | 2-273 | THERMO HANDLE ASM | ASSEMBLY | 2 |



UNITS ARE: INCHES [MM]
 TOLERANCES ARE:
 FRACTIONS DECIMALS ANGLES
 ±1/16" .X ±.1 [2.5] ±1°
 .XX ±.06 [1.5]
 (X.XXX) DENOTES CRITICAL DIMS.
 ALL THREADS ARE CRITICAL

BRASSTECH 2001 CARNEGIE AVE.
 INCORPORATED SANTA ANA, CA 92705
 (949) 417-5207

THERMO TUB / SHOWER

| ZONE | REV | DESCRIPTION | DATE | APPROVED |
|------|-----|-------------|----------|----------|
| - | A | EN-3236 | 01/17/17 | R.S. |
| - | - | EN-2775f | 08/24/15 | J.M. |

COPYRIGHT 2005 BRASSTECH, INC.
 THESE DRAWINGS AND THE DESIGNS
 DEPICTED HEREIN ARE THE PROPRIETARY
 PROPERTY OF BRASSTECH. ANY USE
 OR REPRODUCTION IS SUBJECT TO
 THE EXPRESS APPROVAL OF BRASSTECH.
 UNAUTHORIZED USE IS STRICTLY
 PROHIBITED. ALL RIGHTS RESERVED.

| TESTING | ASSEMBLY | PLATING | POLISHING | MACHINING | TOOLING FIXTURE # | APPLICATION |
|---------|----------|---------|-----------|-----------|-------------------|----------------------------------|
| - | - | - | - | - | - | REMOVE ALL BURRS AND SHARP EDGES |

| DRAWN | CHECKED | APPROVED |
|-----------------|-------------------|---------------|
| JINSON 01/17/17 | RAVINDRA 01/17/17 | R.S. 01/17/17 |

| DWG NO. | REV | SCALE | REF. | SHEET | OF |
|----------|-----|-------|------|-------|----|
| 3-1033TS | A | .375 | - | 1 | 2 |

