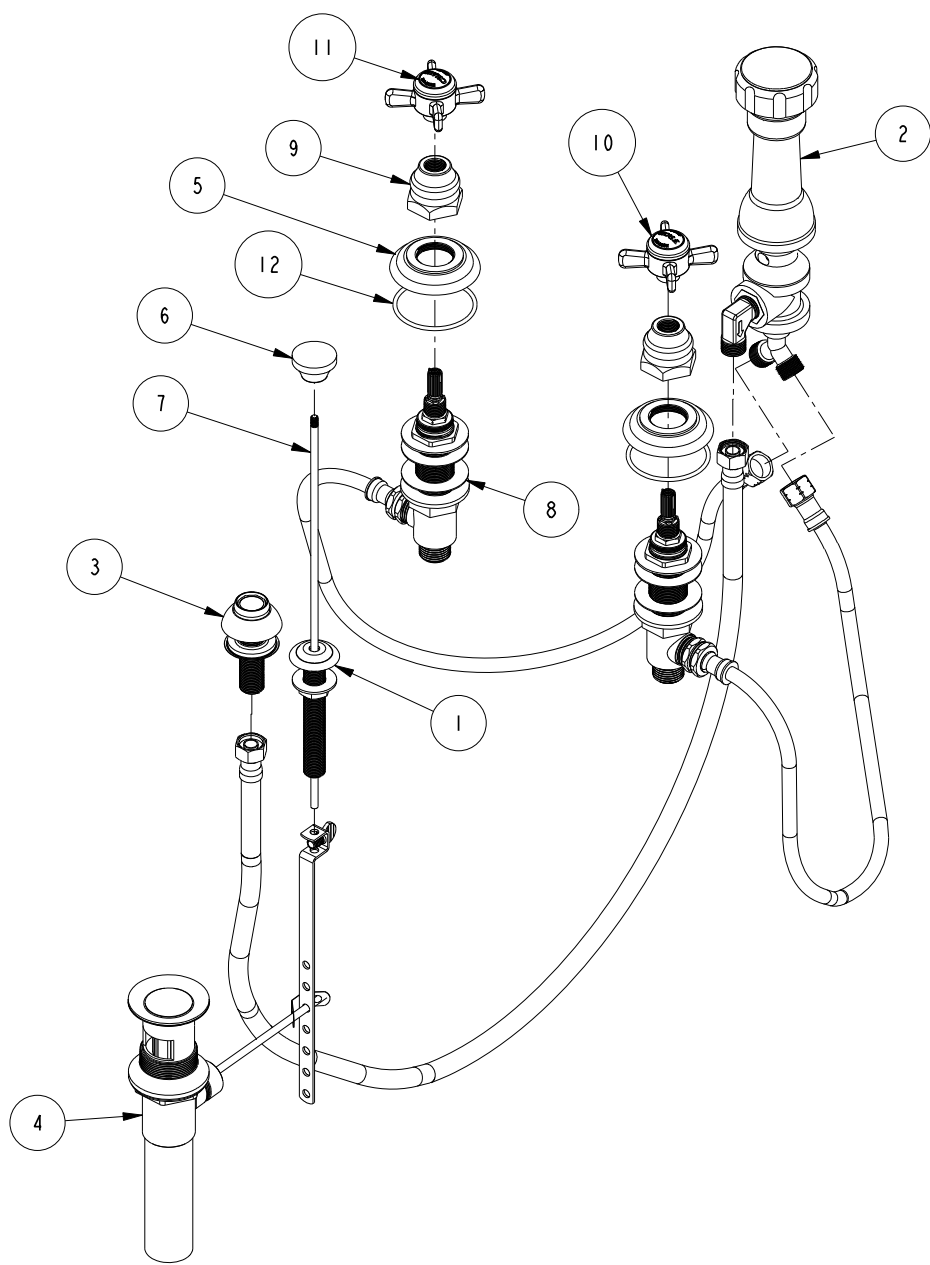


4 3 2 1

D  
C  
B  
A

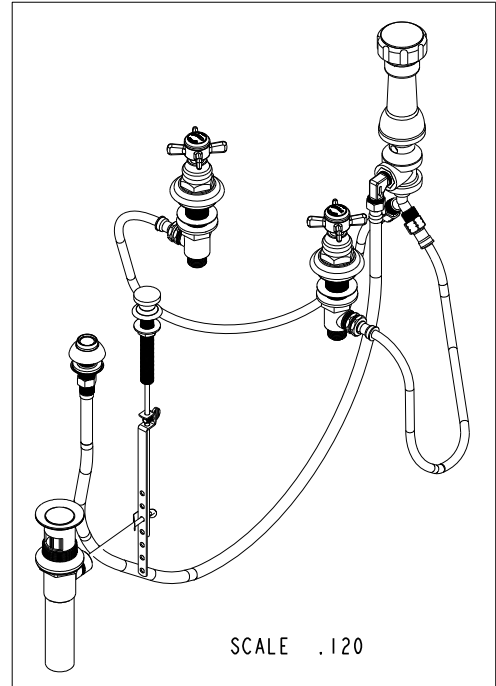


**BILL OF MATERIAL (CURRENT LEVEL)**

ITEM	PT/ASSY	DESCRIPTION	TYPE	QTY.
1	2-159	POP-UP ROD GUIDE ASSEMBLY	ASSEMBLY	1
2	2-235	BIDET DIVERTER / V. BRE	ASSEMBLY	1
3	2-236	DOUCHE SPRAY ASSEMBLY	ASSEMBLY	1
4	325	POP UP ASSEMBLY	ASSEMBLY	1
5	10048	ESCUTCHEON W/S VALVE	PART	2
6	10961	SMOOTH POP - UP KNOB	PART	1
7	10288	3/16" POP UP ROD	PART	1
8	1-542	VALVE KIT - BIDET	ASSEMBLY	1
9	10523	HEX ESCUTCHEON BONNET	PART	2
10	2-115	THIN BLADE X - HANDLE COLD	ASSEMBLY	1
11	2-114	THIN BLADE X - HANDLE HOT	ASSEMBLY	1
12	91231	O-RING, #2-136, EPDM, 65-75 DURO	PART	2

98093 LABEL

1



COPYRIGHT 2005 BRASSTECH, INC. THESE DRAWINGS AND THE DESIGNS DEPICTED HEREIN ARE THE PROPRIETARY PROPERTY OF BRASSTECH. ANY USE OR REPRODUCTION IS SUBJECT TO THE EXPRESS APPROVAL OF BRASSTECH. UNAUTHORIZED USE IS STRICTLY PROHIBITED. ALL RIGHTS RESERVED.

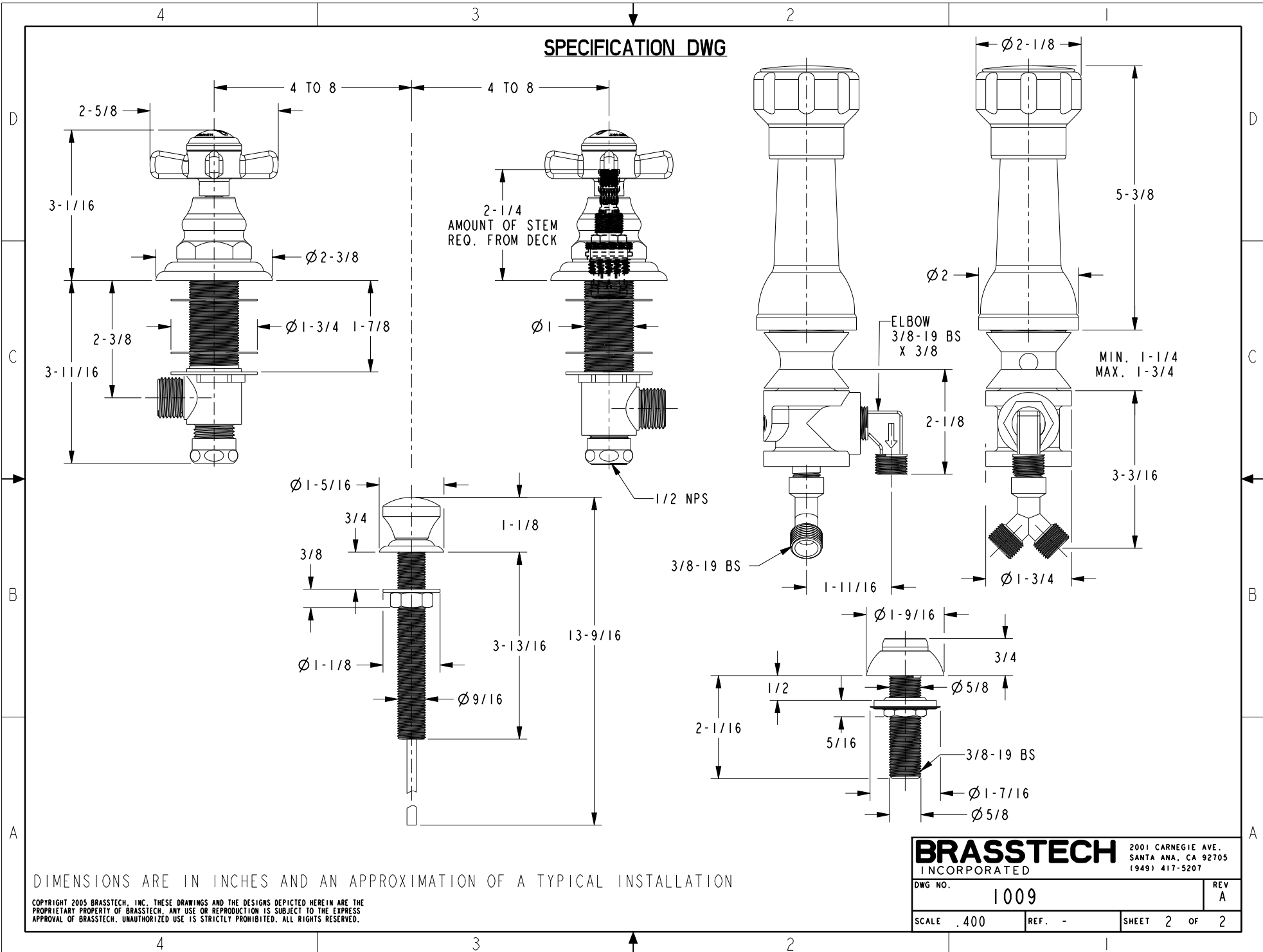
**BRASSTECH**  
INCORPORATED  
2001 E. CARNEGIE AVE.  
SANTA ANA, CA 92705  
(949) 417-5207

BIDET SET

ASSY. NO.	1009	A	EN-2334	12/19/12
SCALE .200	REF. -	-	RELEASED	11/16/01
SHEET 1 OF 2	REV	REV	REV DESC	DATE

4 3 2 1

**SPECIFICATION DWG**



DIMENSIONS ARE IN INCHES AND AN APPROXIMATION OF A TYPICAL INSTALLATION

COPYRIGHT 2005 BRASSTECH, INC. THESE DRAWINGS AND THE DESIGNS DEPICTED HEREIN ARE THE PROPRIETARY PROPERTY OF BRASSTECH. ANY USE OR REPRODUCTION IS SUBJECT TO THE EXPRESS APPROVAL OF BRASSTECH. UNAUTHORIZED USE IS STRICTLY PROHIBITED. ALL RIGHTS RESERVED.

<b>BRASSTECH</b>		2001 CARNEGIE AVE. SANTA ANA, CA 92705 (949) 417-5207
DWG NO.	1009	REV A
SCALE	.400	REF. -
SHEET 2 OF 2		