

4

3

2

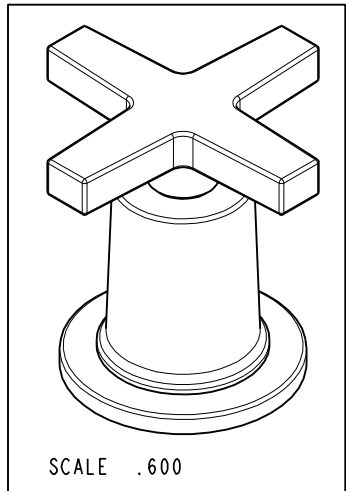
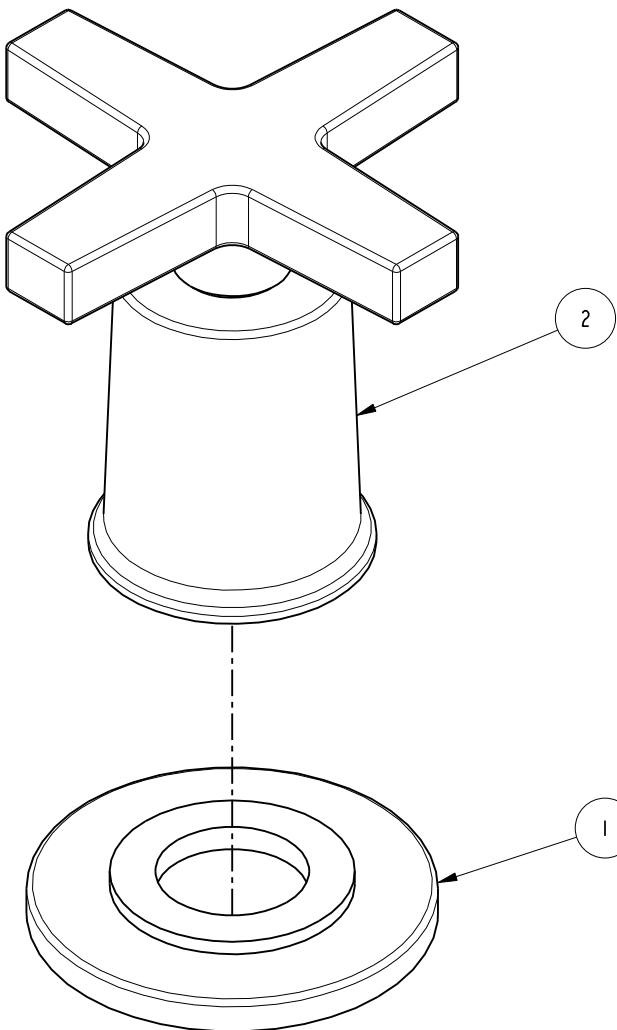
1

NOTES:

(N1) 1. FIT / FORM / FUNCTION SHALL FOLLOW PS-E.008.

BILL OF MATERIAL (CURRENT LEVEL)

ITEM	PT/ASSY	DESCRIPTION	TYPE	QTY.
1	20-162	ESCUTCHEON ASM	ASSEMBLY	1
2	20-164	CROSS HANDLE ASSEMBLY	ASSEMBLY	1



D

C

B

A

D

C

B

A

COPYRIGHT 2005 BRASSTECH, INC.
 THESE DRAWINGS AND THE DESIGNS
 DEPICTED HEREIN ARE THE PROPRIETARY
 PROPERTY OF BRASSTECH. ANY USE
 OR REPRODUCTION IS SUBJECT TO
 THE EXPRESS APPROVAL OF BRASSTECH.
 UNAUTHORIZED USE IS STRICTLY
 PROHIBITED. ALL RIGHTS RESERVED.

UNITS ARE: INCHES [MM]
 TOLERANCES ARE:
 FRACTIONS DECIMALS ANGLES
 $\pm 1/16"$.X $\pm .1$ [2.5] $\pm 1^\circ$
 .XX $\pm .06$ [1.5]

(X.XXX) DENOTES CRITICAL DIMS.
 ALL THREADS ARE CRITICAL

DRAWN RAVINDRA 08/01/16
 CHECKED JINSON 08/01/16
 APPROVED J.M 08/01/16

BRASSTECH 2001 CARNEGIE AVE.
 INCORPORATED SANTA ANA, CA 92705
 (949) 417-5207

HANDLE AND ESCUTCHEON
 ASSEMBLY

DWG NO. 3-573 REV -
 SCALE 1.000 REF. - SHEET | OF |

ZONE	REV	DESCRIPTION	DATE	APPROVED
-	-	EN-3041	08/01/16	J.M

TESTING	ASSEMBLY	PLATING	POLISHING	MACHINING	TOOLING	FIXTURE #	APPLICATION
-	-	-	-	-	-	-	REMOVE ALL BURRS AND SHARP EDGES
-	-	3-2985	3-2985	-	-	-	-
-	-	NEXT ASSY	USED ON	-	-	-	-

4

3

2

1