

4

3

2

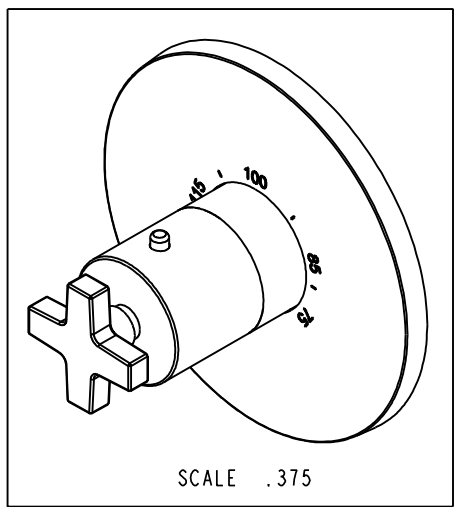
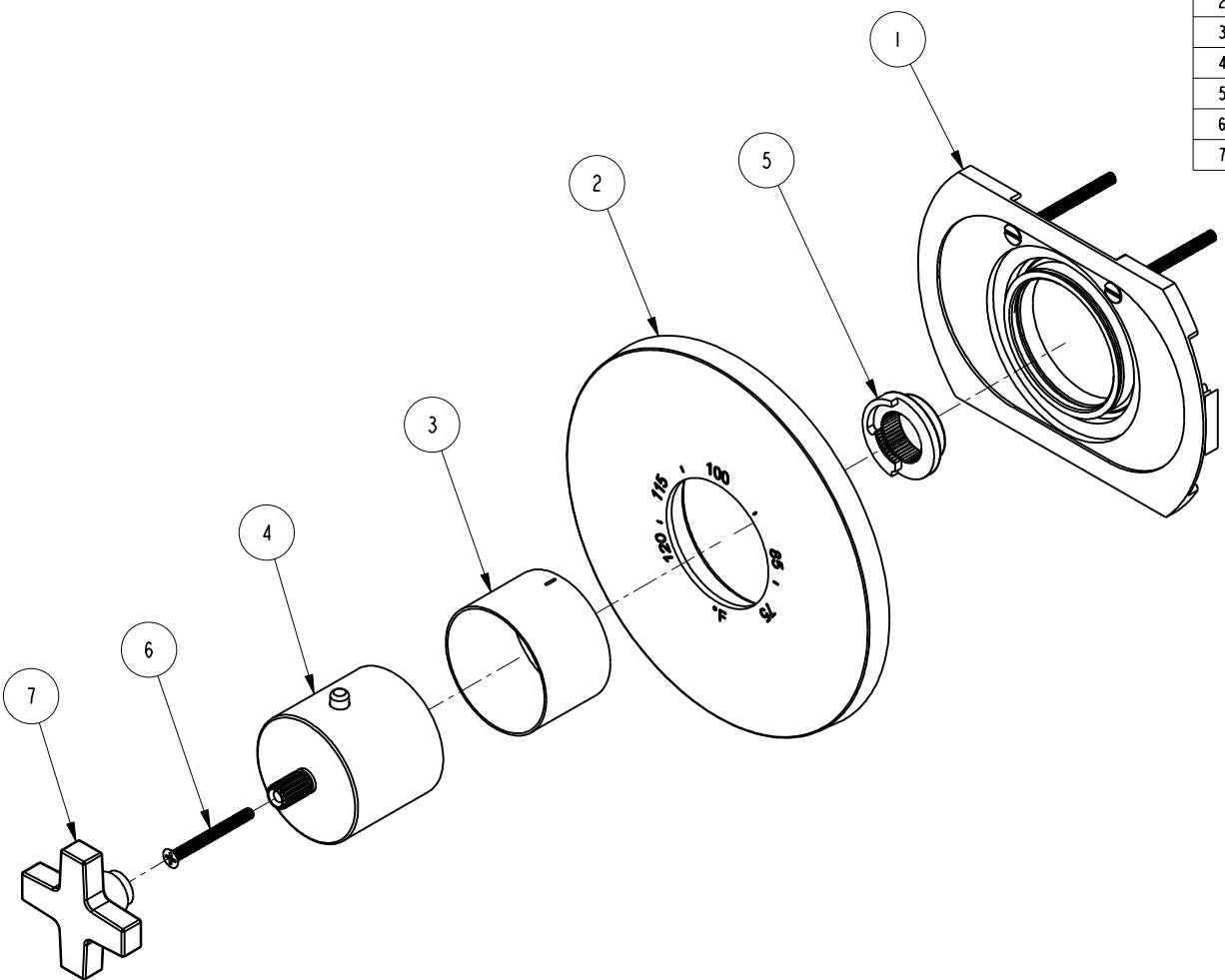
1

NOTES:

(N1) 1. FIT / FORM / FUNCTION SHALL FOLLOW PS-E.008.

BILL OF MATERIAL (CURRENT LEVEL)

| ITEM | PT/ASSY | DESCRIPTION | TYPE | QTY. |
|------|---------|----------------------------------|----------|------|
| 1 | 1-331 | THERMO WALL PLATE ASM | ASSEMBLY | 1 |
| 2 | 12120 | THERMO PLATE | PART | 1 |
| 3 | 11029 | SLEEVE - THERMO | PART | 1 |
| 4 | 20-176 | THERMO BONNET ASM | ASSEMBLY | 1 |
| 5 | 91308 | TEMP LIMIT STOP - THERMO | PART | 1 |
| 6 | 92113 | SCRW, M4 X .7 X 40 PHL FLT HD SS | PART | 1 |
| 7 | 20-188 | CROSS HANDLE ASM | ASSEMBLY | 1 |



| ZONE | REV | DESCRIPTION | DATE | APPROVED |
|------|-----|-------------|----------|----------|
| - | - | EN-3041 | 08/03/16 | J.M |

COPYRIGHT 2005 BRASSTECH, INC. THESE DRAWINGS AND THE DESIGNS DEPICTED HEREIN ARE THE PROPRIETARY PROPERTY OF BRASSTECH. ANY USE OR REPRODUCTION IS SUBJECT TO THE EXPRESS APPROVAL OF BRASSTECH. UNAUTHORIZED USE IS STRICTLY PROHIBITED. ALL RIGHTS RESERVED.

| | | | |
|-------------------|----------------------------------|-------------|---------|
| TESTING | - | - | - |
| ASSEMBLY | - | - | - |
| PLATING | - | - | - |
| POLISHING | - | NEXT ASSY | USED ON |
| MACHINING | - | APPLICATION | |
| TOOLING FIXTURE # | REMOVE ALL BURRS AND SHARP EDGES | | |

| | |
|---|-------------------|
| UNITS ARE: INCHES [MM] | |
| TOLERANCES ARE: | |
| FRACTIONS | DECIMALS ANGLES |
| ±1/16" | ±.01" ±1° |
| .X ±.1 [2,5] | .XX ±.06 [1,5] |
| (X.XXX) DENOTES CRITICAL DIMS. ALL THREADS ARE CRITICAL | |
| DRAWN | VINAY 08/03/16 |
| CHECKED | RAVINDRA 08/03/16 |
| APPROVED | J.M 08/03/16 |

BRASSTECH 2001 CARNEGIE AVE. SANTA ANA, CA 92705 (949) 417-5207
INCORPORATED

3/4" THERMOSTATIC TRIM

DWG NO. 3-2984TR REV -

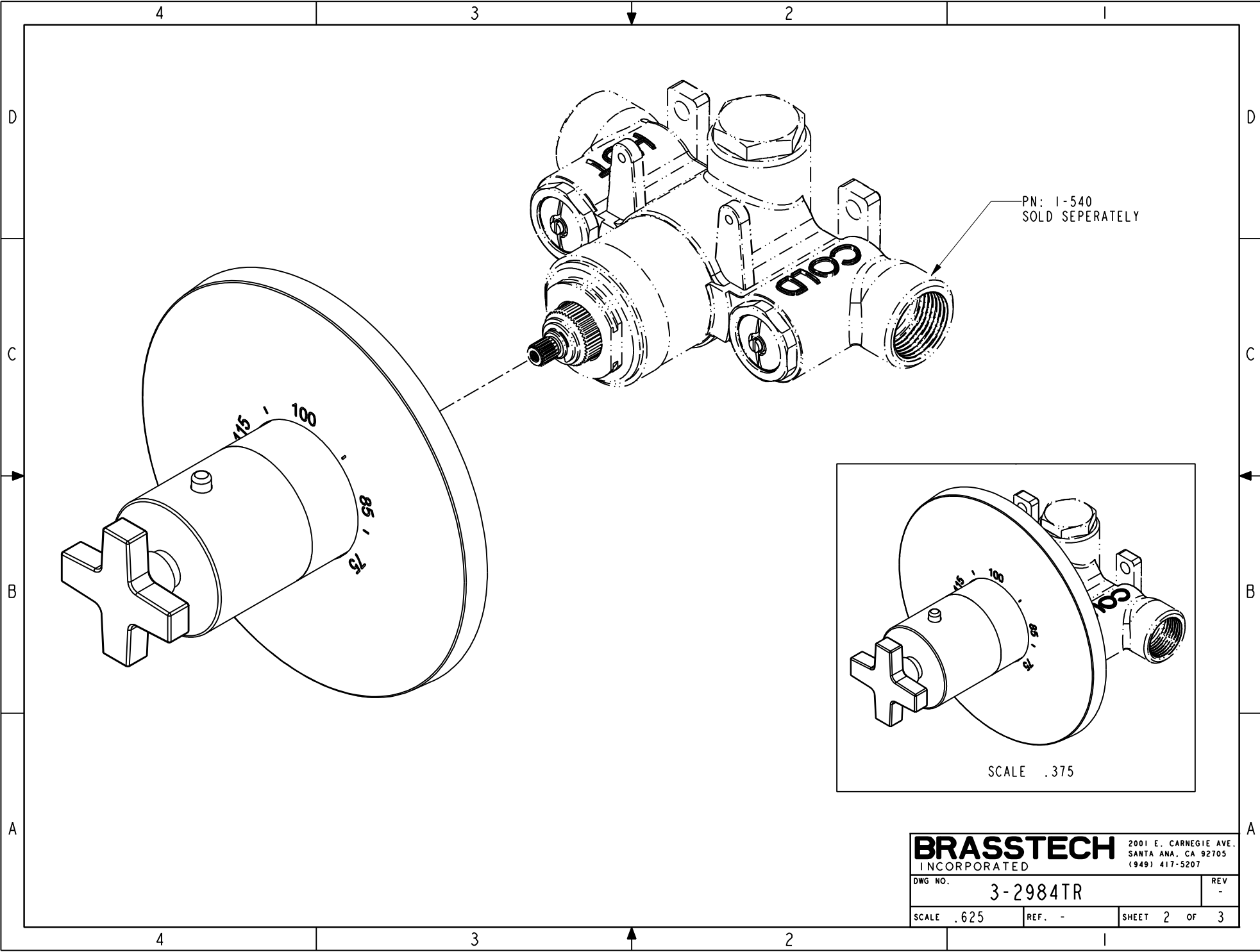
SCALE .375 REF. - SHEET 1 OF 3

4

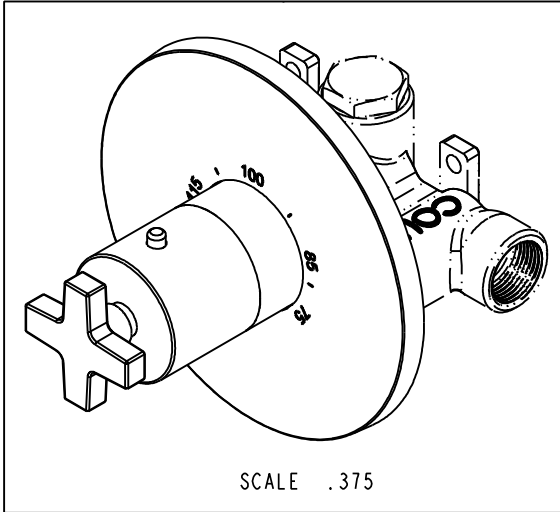
3

2

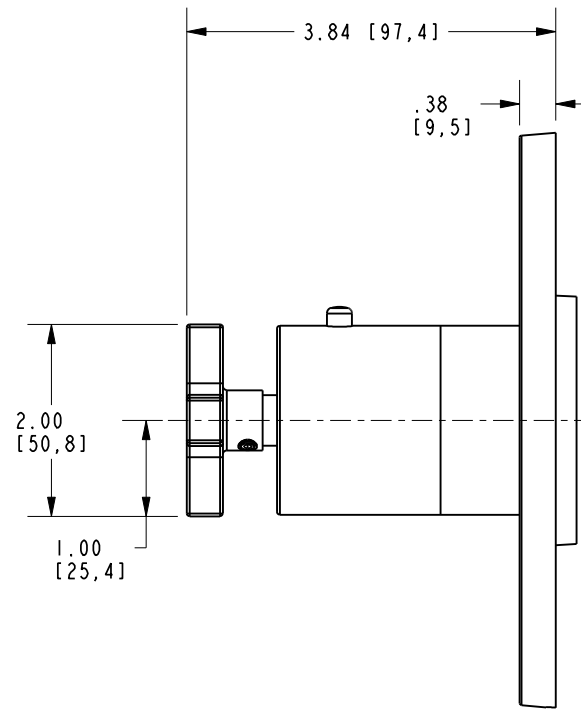
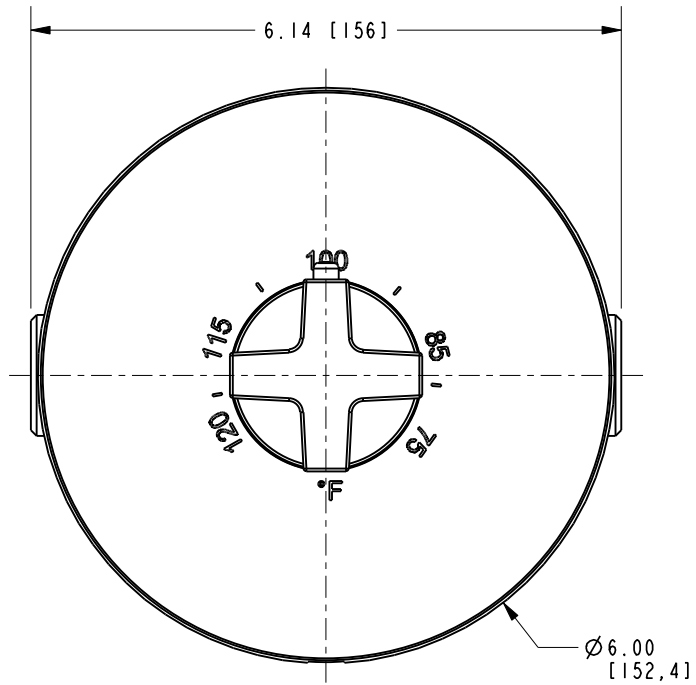
1



PN: 1-540
SOLD SEPERATELY



| | | | |
|------------------|----------|-----------------------|-----|
| BRASSTECH | | 2001 E. CARNEGIE AVE. | |
| INCORPORATED | | SANTA ANA, CA 92705 | |
| | | (949) 417-5207 | |
| DWG NO. | 3-2984TR | | REV |
| | | | - |
| SCALE .625 | REF. - | SHEET 2 OF 3 | |



| | | |
|------------------|----------|-----------------------|
| BRASSTECH | | 2001 E. CARNEGIE AVE. |
| INCORPORATED | | SANTA ANA, CA 92705 |
| | | (949) 417-5207 |
| DWG NO. | 3-2984TR | REV - |
| SCALE .500 | REF. - | SHEET 3 OF 3 |