

4

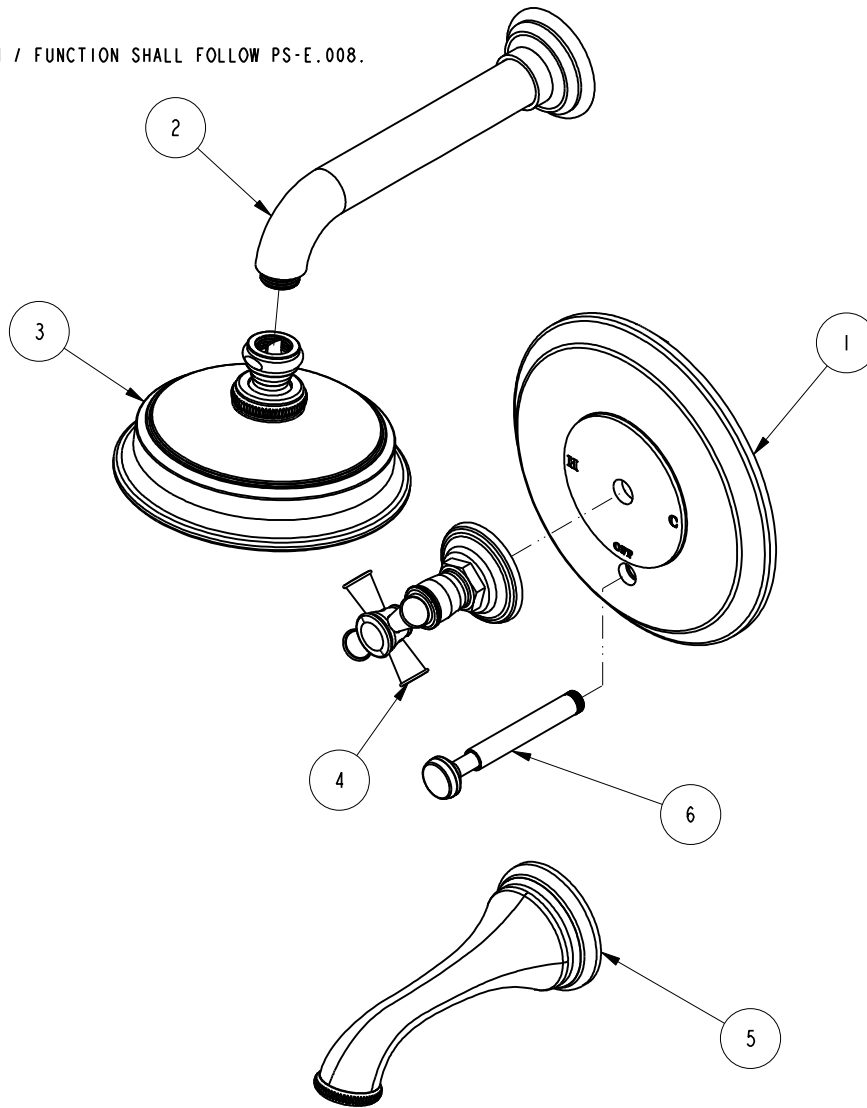
3

2

1

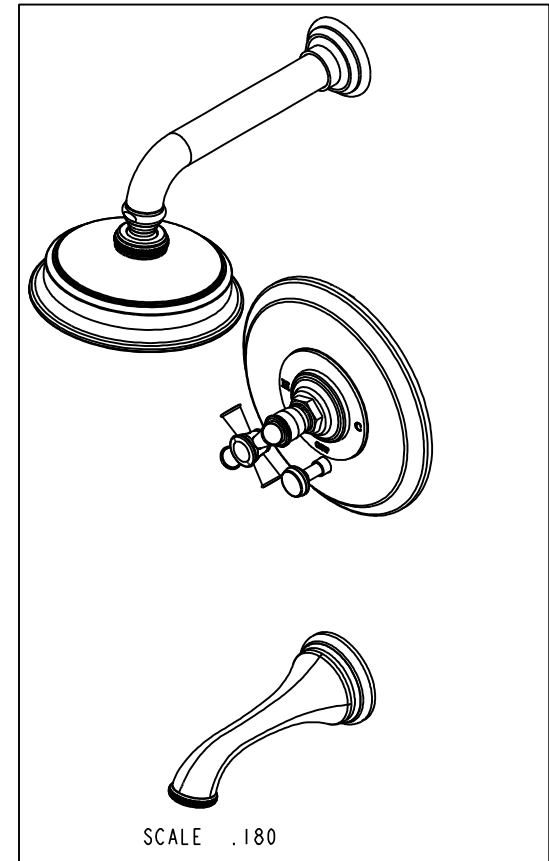
NOTES:

(NI) 1. FIT / FORM / FUNCTION SHALL FOLLOW PS-E.008.



BILL OF MATERIAL (CURRENT LEVEL)

ITEM	PT/ASSY	DESCRIPTION	TYPE	QTY.
1	2-659	TUB/SHOWER PLATE	ASSEMBLY	1
2	201-1	SHOWER ARM	ASSEMBLY	1
3	2142	TRAD. SHOWER HEAD - SINGLE JET	ASSEMBLY	1
4	3-562	CROSS HANDLE W/ESC.	ASSEMBLY	1
5	20-131	WALL MOUNT TUB SPOUT	ASSEMBLY	1
6	2-217	DIVERTER TRIM KIT	ASSEMBLY	1



D

C

B

A

D

C

B

A

TESTING	-	-	-
ASSEMBLY	-	-	-
PLATING	-	-	-
POLISHING	-	NEXT ASSY	USED ON
MACHINING	-	APPLICATION	
TOOLING FIXTURE #	REMOVE ALL BURRS AND SHARP EDGES		

UNITS ARE: INCHES [MM]  
 TOLERANCES ARE:  
 FRACTIONS DECIMALS ANGLES  
 $\pm 1/16"$  .X  $\pm .1$  [2.5]  $\pm 1^\circ$   
 .XX  $\pm .06$  [1.5]

(X.XXX) DENOTES CRITICAL DIMS.  
 ALL THREADS ARE CRITICAL

DRAWN	JINSON	08/10/15
CHECKED	RAVINDRA	08/10/15
APPROVED	J.M	08/10/15

**BRASSTECH** 2001 CARNEGIE AVE.  
 INCORPORATED SANTA ANA, CA 92705  
 (949) 417-5207

B/P SHOWER TRIM KIT

DWG NO.	3-2902BP	REV	-
SCALE	.250	REF.	-
SHEET 1		OF 3	

COPYRIGHT 2005 BRASSTECH, INC.  
 THESE DRAWINGS AND THE DESIGNS  
 DEPICTED HEREIN ARE THE PROPRIETARY  
 PROPERTY OF BRASSTECH. ANY USE  
 OR REPRODUCTION IS SUBJECT TO  
 THE EXPRESS APPROVAL OF BRASSTECH.  
 UNAUTHORIZED USE IS STRICTLY  
 PROHIBITED. ALL RIGHTS RESERVED.

-	-	EN-2838c	08/10/15	J.M
ZONE	REV	DESCRIPTION	DATE	APPROVED

4

3

2

1

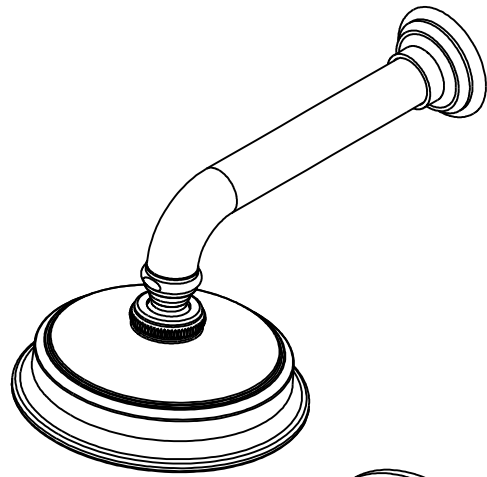
4

3

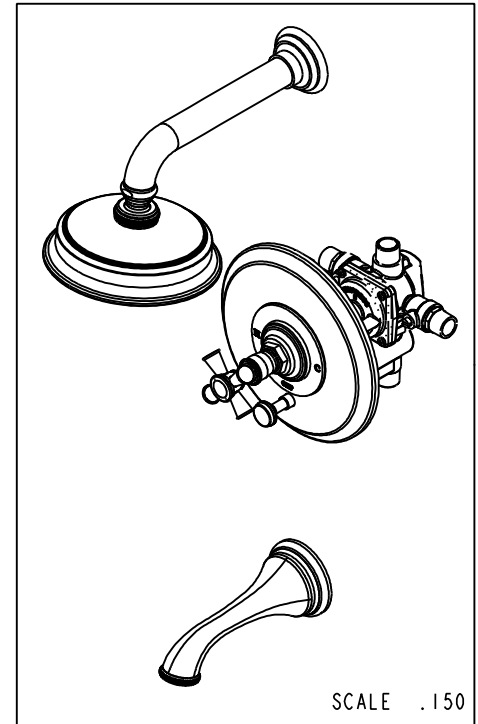
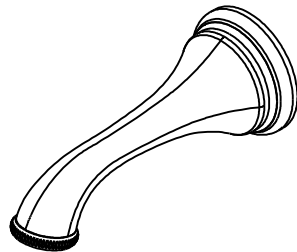
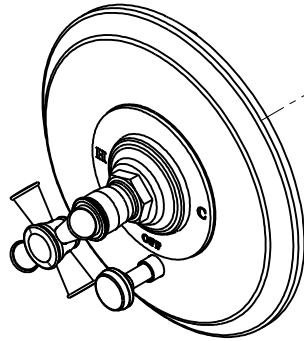
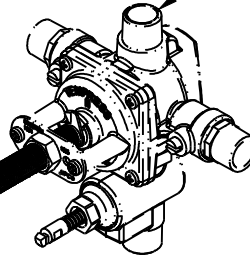
2

D

D



PN 1-595  
SOLD SEPARATELY



SCALE .150

C

C

B

B

B

B

A

A

4

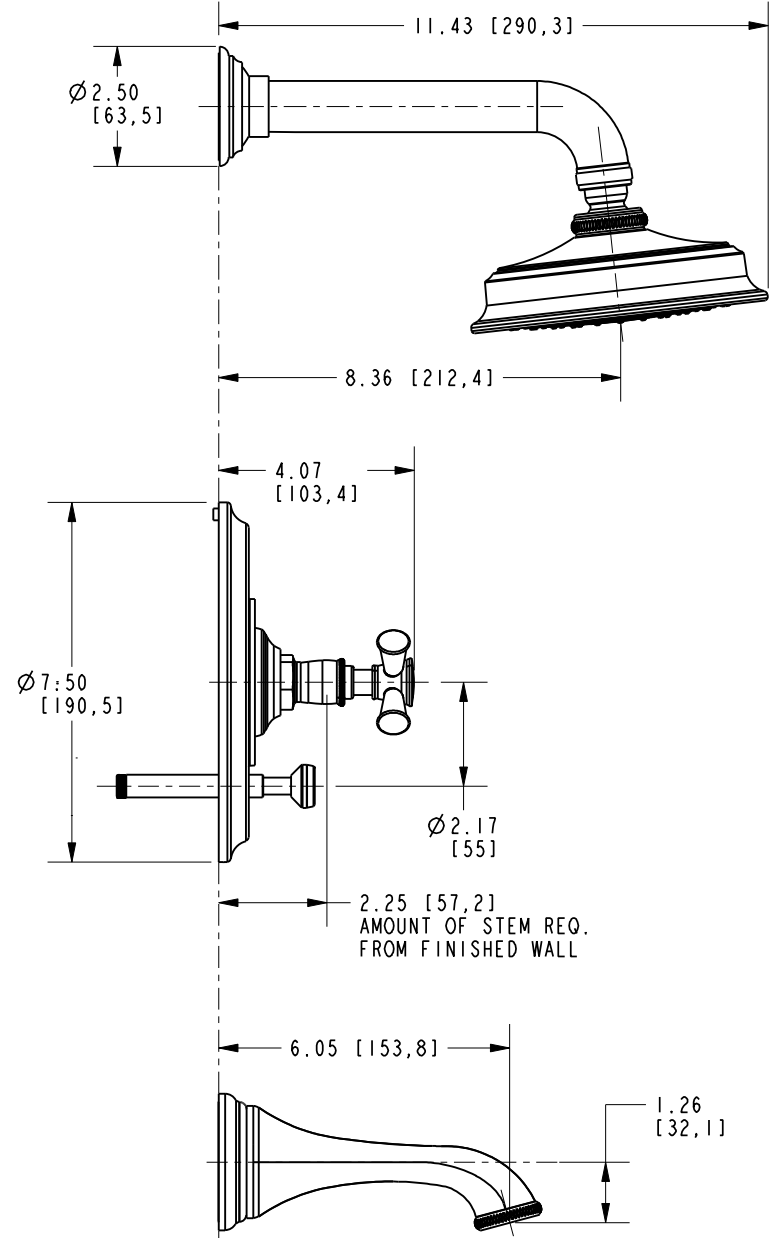
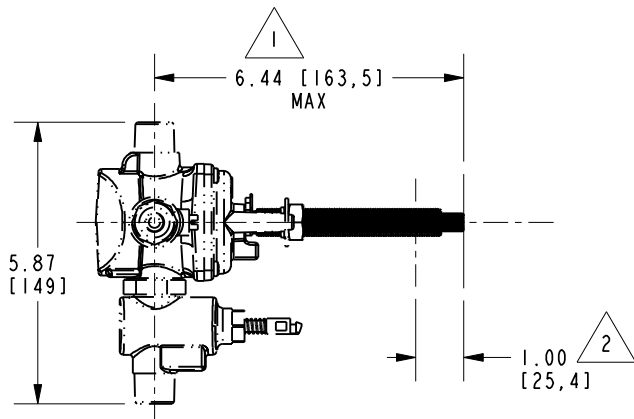
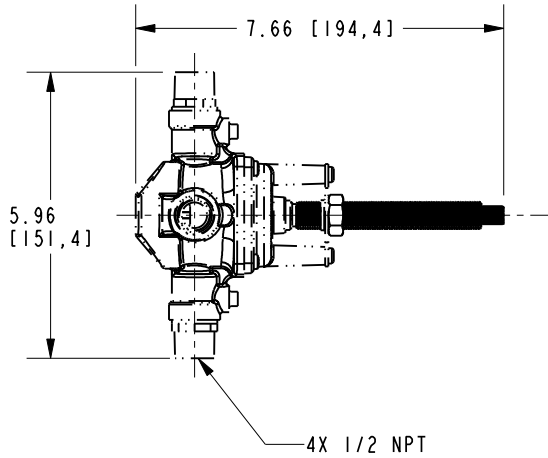
3

2

<b>BRASSTECH</b>		2001 E. CARNEGIE AVE.	
INCORPORATED		SANTA ANA, CA 92705	
		(949) 417-5207	
DWG NO.	3-2902BP		REV
			-
SCALE .250	REF. -	SHEET 2	OF 3

NOTE:

- 1. CUT STEM TO DIMENSION SHOWN
- 2. CUT ALL THREADS 1" SHORTER THAN STEM



**BRASSTECH** 2001 E. CARNEGIE AVE.  
INCORPORATED SANTA ANA, CA 92705  
(949) 417-5207

DWG NO.	3-2902BP	REV	-
SCALE	.250	REF.	-
SHEET 3		OF 3	