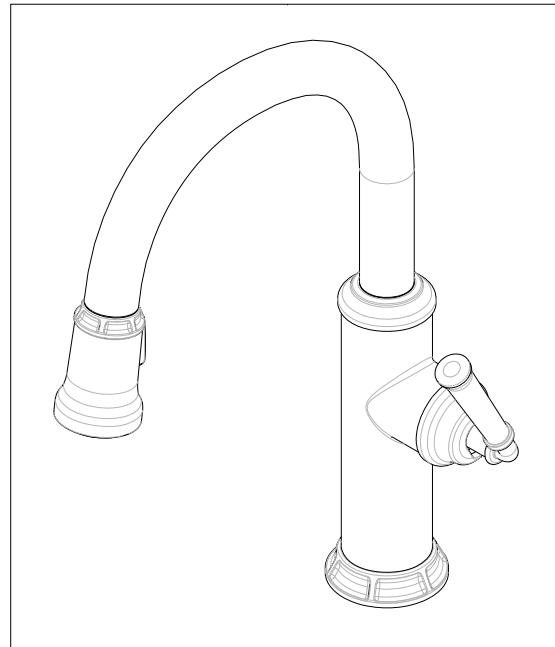


NOTES:

- (N1) 1. FIT / FORM / FUNCTION SHALL FOLLOW PS-E.008.
- 2 PUT THESE ITEMS IN SEPARATE PLASTIC BAGS.
- 3 TORQUE TO 7.5-8.5 LB-FT.
- 4 APPLY LIGHT FILM OF DOW CORNING 111 SILICONE COMPOUND TO ALL O-RINGS PRIOR TO INSTALLATION.
- 5 APPLY LOCTITE 242, IF SCREW DOES NOT HAVE NYLON PATCH.
- 6 **APPLY SILICONE GREASE 10" FROM OUTLET OF PN 11877.**

C.G. 09/06/18



BILL OF MATERIAL (CURRENT LEVEL)

ITEM	PT/ASSY	DESCRIPTION	TYPE	QTY.
1	20-211	BASE RING ASM	ASSEMBLY	1
2	20-278	MAIN BODY ASM, TAFT	ASSEMBLY	1
3	91030	O-RING, #2- 115, EPDM, 65-75 DURO, NSF 61	PART	4
4	91712	SLEEVE	PART	1
5	12493	SPOUT	PART	1
6	91544	MAGNET DOCKING	ASSEMBLY	1
7	11877	HOSE, PULLDOWN SWIVEL	ASSEMBLY	1
8	3-590	SPRAY HEAD, TAFT	ASSEMBLY	1
9	1-064	SINGLE LEVER CARTRIDGE	PART	1
10	1-266	CART. RETAINER ASM	ASSEMBLY	1
11	12841	HANDLE HUB	PART	1
12	91534	CARTRIDGE STEM INSERT	PART	1
13	11874	HANDLE ADAPTER SCREW	PART	1
14	20-318	HANDLE LEVER ASM	ASSEMBLY	1
15	91255	O-RING, #2- 011, EPDM, 65-75 DURO, NSF-61	PART	2
16	91568	RETAINER CLIP	PART	1
17	1-256	MOUNTING KIT	ASSEMBLY	1
18	91341	ZIP TIE	PART	1
19	98044	LABEL - HOT	PART	1
20	1-286	WEIGHT ASM	ASSEMBLY	1

ZONE	REV	DESCRIPTION	DATE	APPROVED
-	A	EN-3413b	11/14/17	JM
-	-	EN-3076	02/07/17	JM

COPYRIGHT 2005 BRASSTECH, INC. THESE DRAWINGS AND THE DESIGNS DEPICTED HEREIN ARE THE PROPRIETARY PROPERTY OF BRASSTECH. ANY USE OR REPRODUCTION IS SUBJECT TO THE EXPRESS APPROVAL OF BRASSTECH. UNAUTHORIZED USE IS STRICTLY PROHIBITED. ALL RIGHTS RESERVED.

TESTING	ASSEMBLY	PLATING	POLISHING	MACHINING	TOOLING FIXTURE #	REMOVE ALL BURRS AND SHARP EDGES
-	-	-	-	-	-	-
-	-	-	-	-	PLATING	USED ON
-	-	-	-	-	POLISHING	NEXT ASSY
-	-	-	-	-	MACHINING	APPLICATION

UNITS ARE: INCHES [MM]
TOLERANCES ARE:
FRACTIONS DECIMALS ANGLES
±1/16" .X ±.1 (2.5) ±1°
.XX ±.06 (1.5)

(X.XXX) DENOTES CRITICAL DIMS.
ALL THREADS ARE CRITICAL

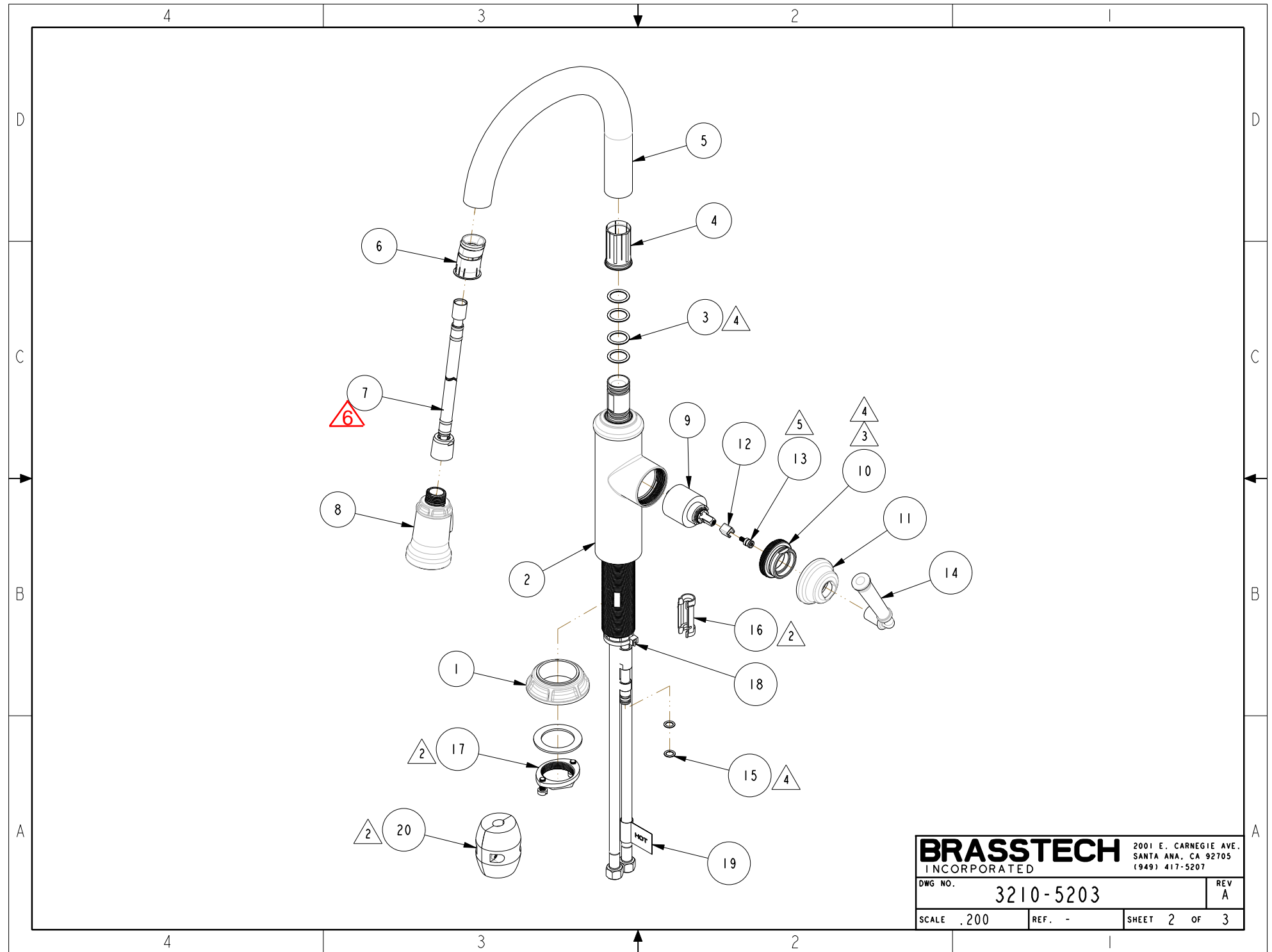
DRAWN	JINSON	02/07/17
CHECKED	RAVINDRA	02/07/17
APPROVED	J.W	02/07/17

BRASSTECH 2001 CARNEGIE AVE.
INCORPORATED SANTA ANA, CA 92705
(949) 417-5207

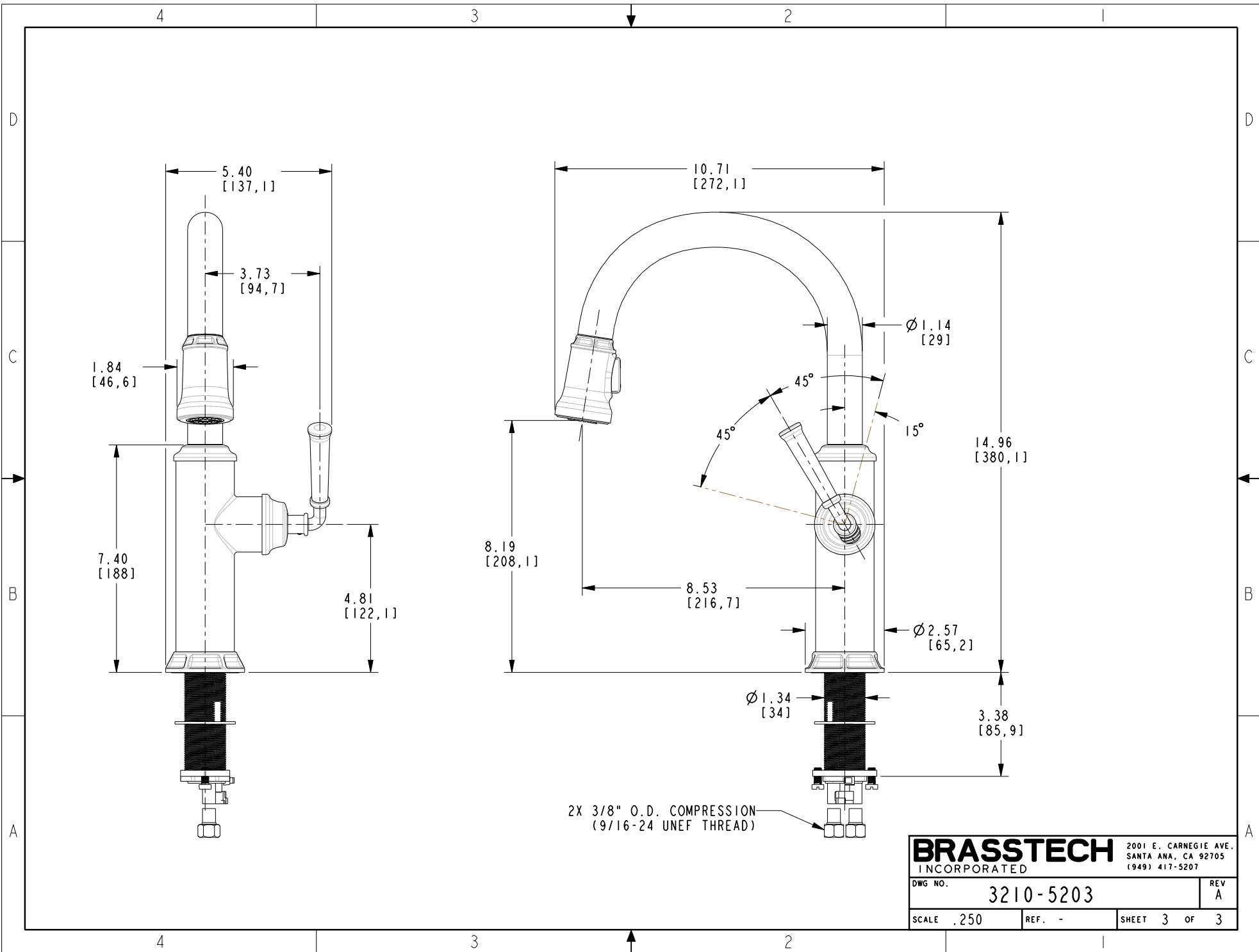
PREP/BAR PULLDOWN

DWG NO. 3210-5203 REV A

SCALE .250 REF. - SHEET 1 OF 3



BRASSTECH		2001 E. CARNEGIE AVE. SANTA ANA, CA 92705 (949) 417-5207	
DWG NO.	3210-5203	REV	A
SCALE	.200	REF.	-
SHEET 2		OF 3	



2X 3/8" O.D. COMPRESSION
(9/16-24 UNEF THREAD)

BRASSTECH		2001 E. CARNEGIE AVE. SANTA ANA, CA 92705 (949) 417-5207	
DWG NO.	3210-5203		REV A
SCALE	.250	REF.	-
SHEET 3		OF 3	