

4

3

2

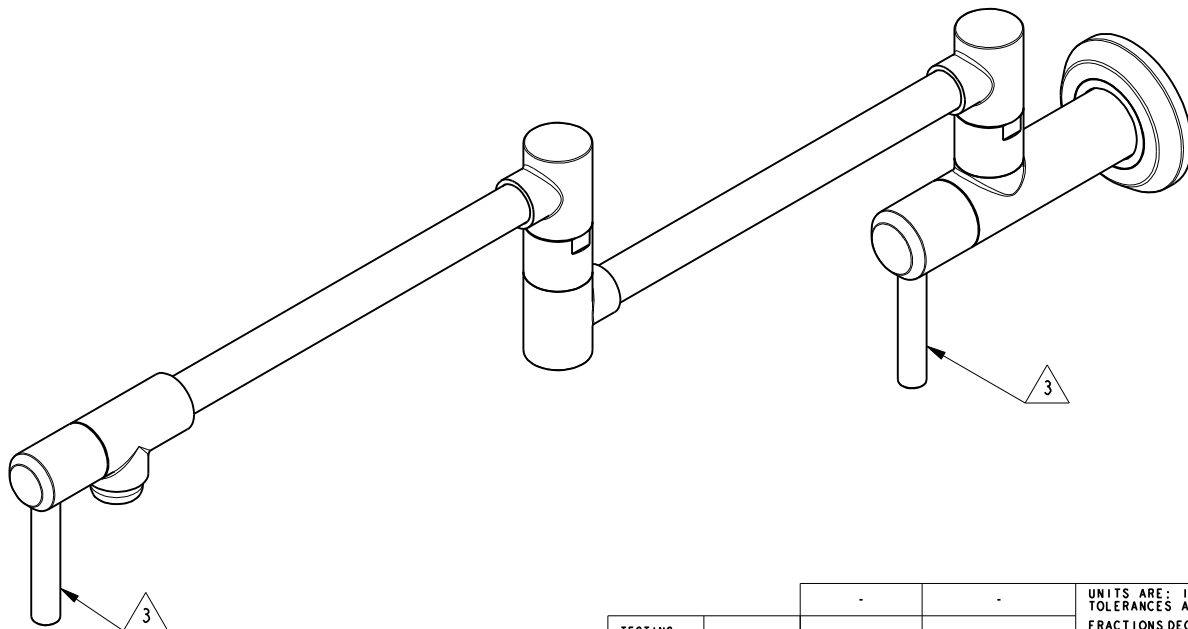
1

NOTES:

- (N1) 1. FIT / FORM / FUNCTION SHALL FOLLOW PS-E.008.
- 2. PACK THESE ITEMS IN A PLASTIC BAG.
- 3. HANDLE IN CLOSE POSITION.
- 4. INSTALLATION TORQUE 11-14 LB-FT.
- 5. INSTALLATION TORQUE 4-6 LB-FT.
- 6. APPLY LOCTITE 680.
- 7. APPLY LOCTITE 242

BILL OF MATERIAL (CURRENT LEVEL)

| ITEM | PT/ASSY | DESCRIPTION | TYPE | QTY. |
|------|---------|--|----------|------|
| 1 | 11330 | VALVE BODY, WALL-END | PART | 1 |
| 2 | 11309 | FLANGE, MOUNTING | PART | 1 |
| 3 | 92231 | SCRW, 1/4-20 X 1/4 SKT HD CUP PT SS | PART | 1 |
| 4 | 92223 | SCRW, #8 X 2-1/2 PHL FLT HD SS | PART | 4 |
| 5 | 20-218 | FLANGE ASM, CONTEMP | ASSEMBLY | 1 |
| 6 | 2-553 | LOWER ARM ASM, CONTEMP | ASSEMBLY | 1 |
| 7 | 2-552 | UPPER ARM ASM, CONTEMP | ASSEMBLY | 1 |
| 8 | 91325 | WSHR, .23 ID X .625 OD X .093 THK, FLT, NEOPRENE | PART | 1 |
| 9 | 1-134 | CARTR 3/8 HOT 1/4 TR | PART | 1 |
| 10 | 12750 | ADAPTER | PART | 2 |
| 11 | 92477 | SCRW, M4 X 16 SKT FLT HD SS | PART | 2 |
| 12 | 12648 | HUB, HANDLE, TIP-END | PART | 1 |
| 13 | 92005 | SCRW, 1/4-20 X 5/8 SKT HD CUP PT SS | PART | 2 |
| 14 | 11017 | LEVER HANDLE | PART | 2 |
| 15 | 1-006 | C/S VALVE CARTRIDGE - HOT | PART | 1 |
| 16 | 12647 | HUB, HANDLE, WALL-END | PART | 1 |



COPYRIGHT 2005 BRASSTECH, INC. THESE DRAWINGS AND THE DESIGNS DEPICTED HEREIN ARE THE PROPRIETARY PROPERTY OF BRASSTECH. ANY USE OR REPRODUCTION IS SUBJECT TO THE EXPRESS APPROVAL OF BRASSTECH. UNAUTHORIZED USE IS STRICTLY PROHIBITED. ALL RIGHTS RESERVED.

UNITS ARE: INCHES [MM]
TOLERANCES ARE:
FRACTIONS DECIMALS ANGLES
±1/16" .X ±.1 [2.5] ±1°
.XX ±.06 [1.5]

(X.XXX) DENOTES CRITICAL DIMS. ALL THREADS ARE CRITICAL

DRAWN JINSON 12/15/16
CHECKED RAVINDRA 12/15/16
APPROVED J.M. 12/15/16

BRASSTECH 2001 CARNEGIE AVE.
INCORPORATED SANTA ANA, CA 92705
(949) 417-5207

POT FILLER, CONTEMP

DWG NO. 3200-5503 REV -
SCALE .300 REF. - SHEET 1 OF 3

| ZONE | REV | DESCRIPTION | DATE | APPROVED |
|------|-----|-------------|----------|----------|
| - | - | EN-3076 | 12/15/16 | J.M. |

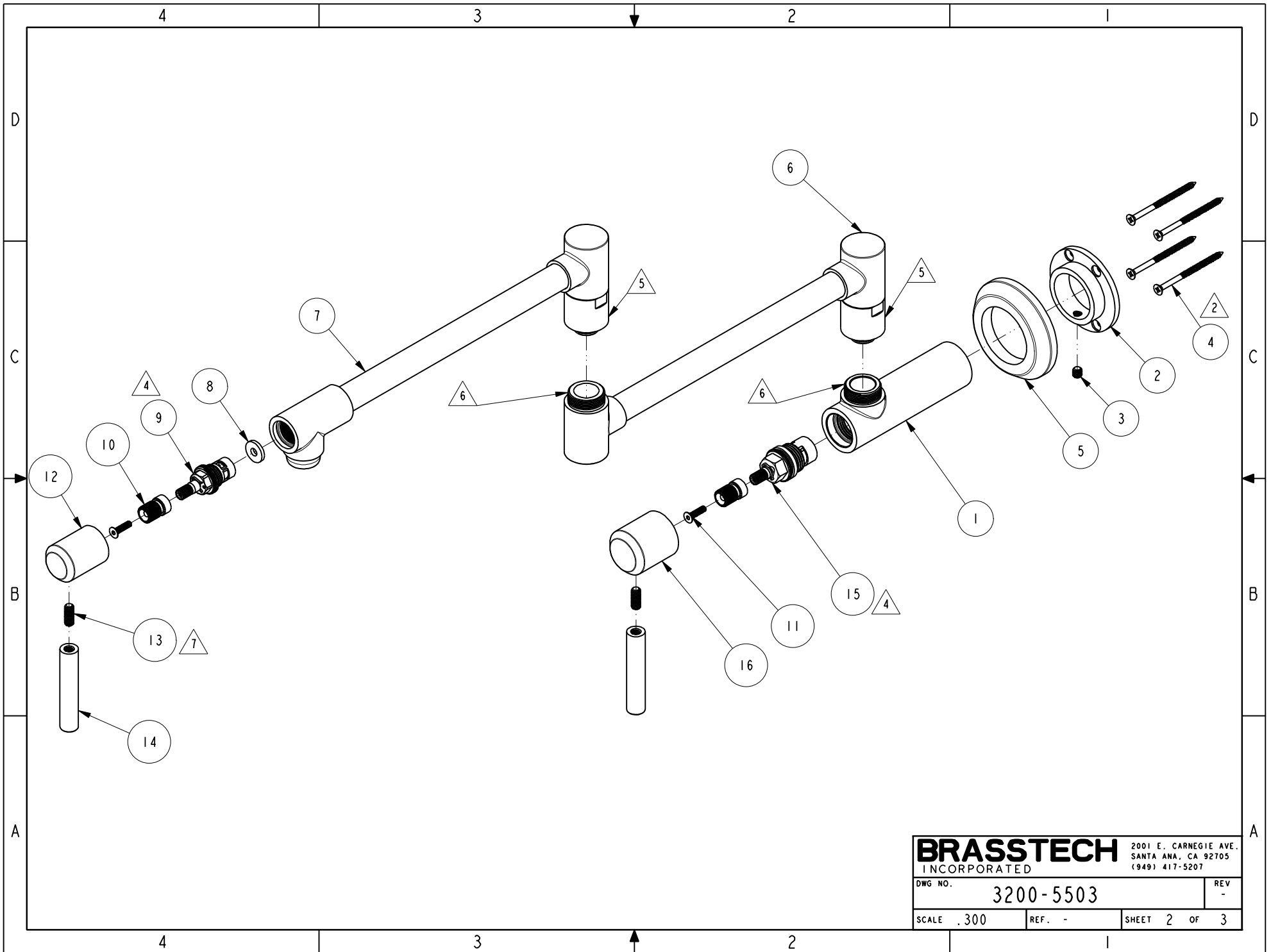
| TESTING | ASSEMBLY | PLATING | POLISHING | MACHINING | TOOLING | FIXTURE # | APPLICATION |
|---------|----------|---------|-----------|-----------|---------|-----------|----------------------------------|
| - | - | - | - | - | - | - | REMOVE ALL BURRS AND SHARP EDGES |

4

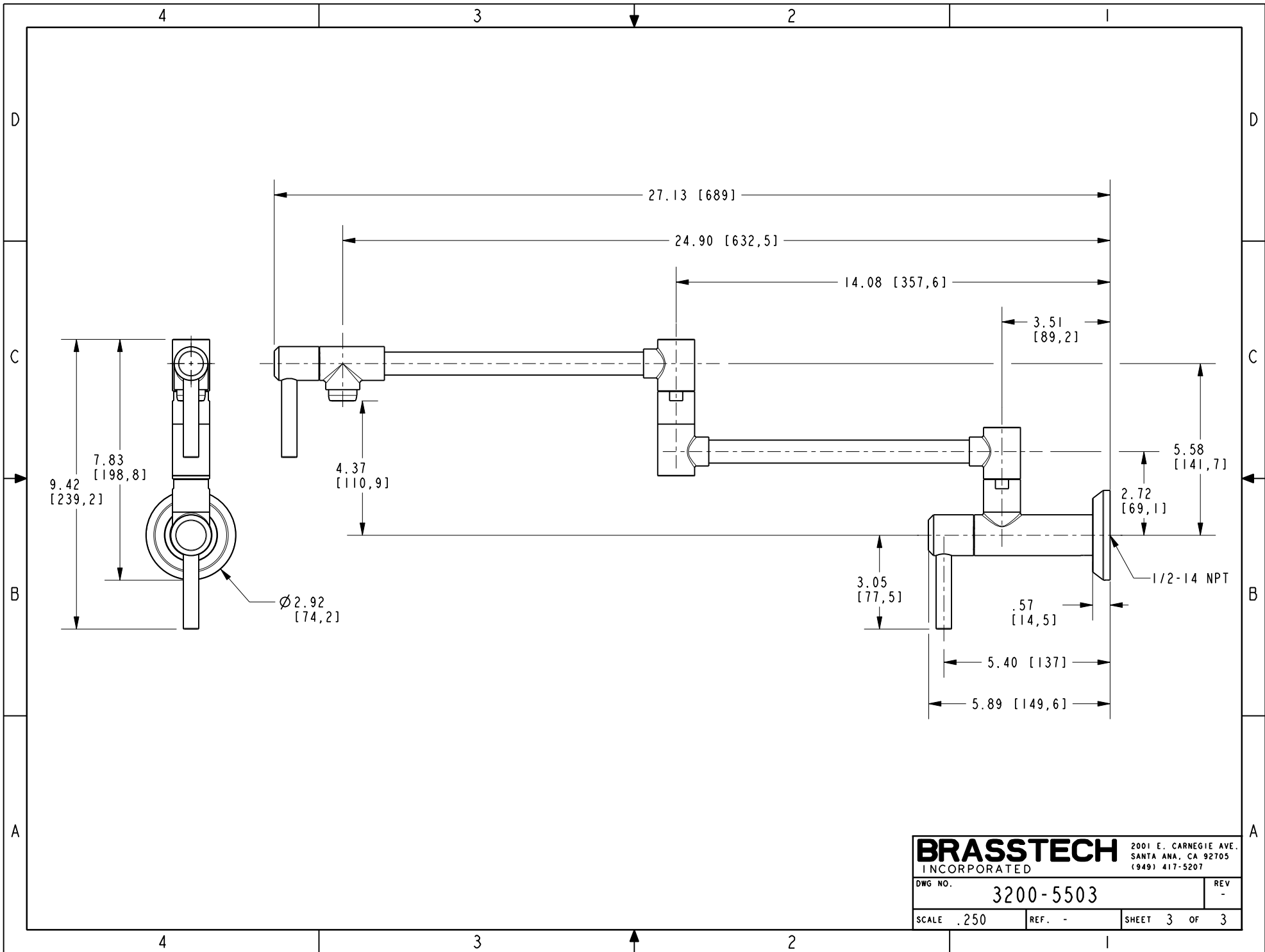
3

2

1



| | | |
|----------------------------------|-----------|--|
| BRASSTECH INCORPORATED | | 2001 E. CARNEGIE AVE. SANTA ANA, CA 92705 (949) 417-5207 |
| DWG NO. | 3200-5503 | REV - |
| SCALE .300 | REF. - | SHEET 2 OF 3 |



| | | | |
|-------------------|--------|-----------------------|--|
| BRASSTECH | | 2001 E. CARNEGIE AVE. | |
| INCORPORATED | | SANTA ANA, CA 92705 | |
| DWG NO. 3200-5503 | | REV - | |
| SCALE .250 | REF. - | SHEET 3 OF 3 | |