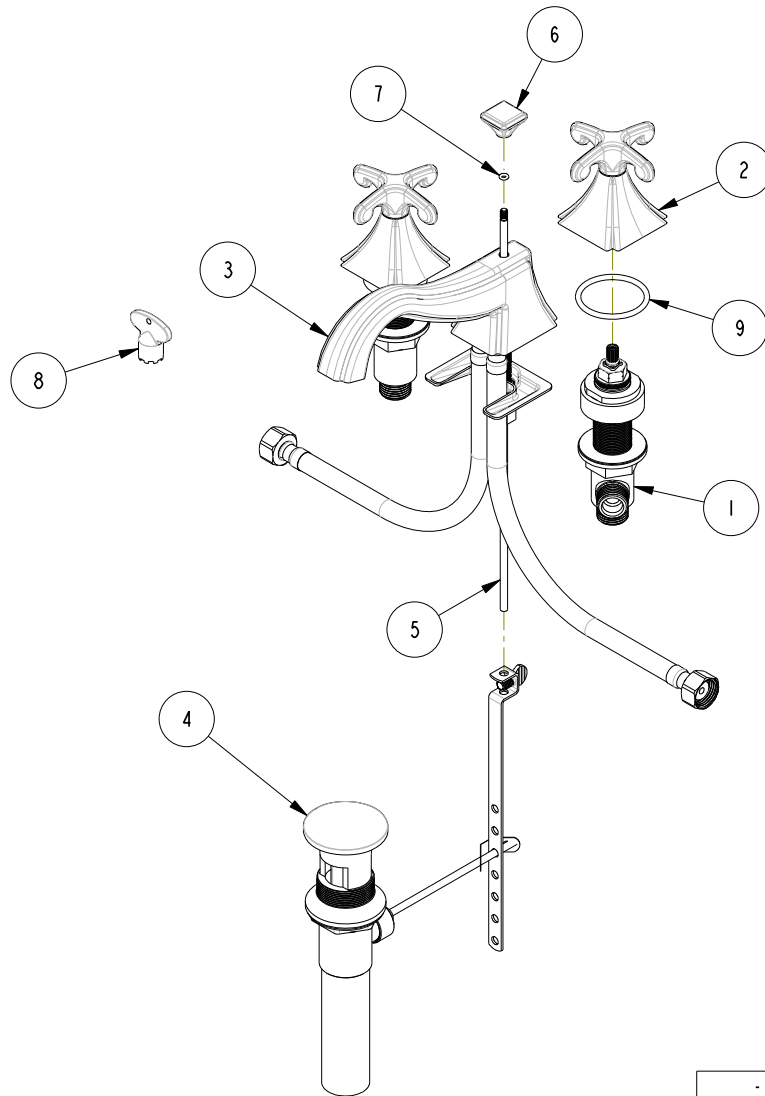


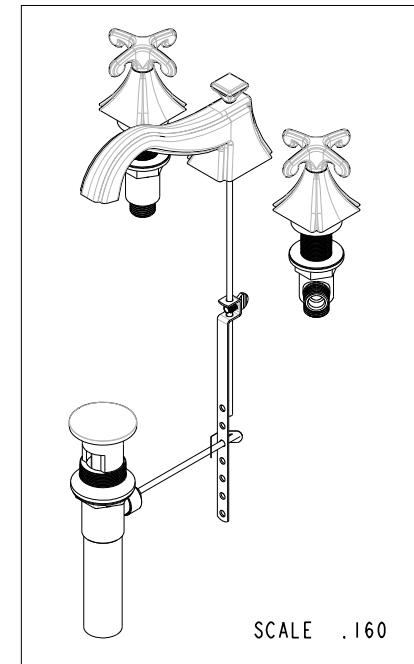
NOTES:

(NI) 1. FIT / FORM / FUNCTION SHALL FOLLOW PS-E.008.



**BILL OF MATERIAL (CURRENT LEVEL)**

ITEM	PT/ASSY	DESCRIPTION	TYPE	QTY.
1	1-591	WIDE SPREAD VALVE KIT	ASSEMBLY	1
2	2-804	CROSS HANDLE ASM	ASSEMBLY	2
3	8-108	CIRCE W/S SPOUT ASM	ASSEMBLY	1
4	325	POP UP ASSEMBLY	ASSEMBLY	1
5	10288	3/16" POP UP ROD	PART	1
6	80006	POP-UP KNOB (SQ)	PART	1
7	91100	O-RING, #2-006, EPDM, 65-75 DURO	PART	1
8	91379	AERATOR KEY	PART	1
9	91570	O-RING, 3.5 X 42MM ID, EPDM, 65-75 DURO	PART	2



-	C	EN-2027b	07/07/15	AN
-	B	EN-2639	11/14/13	VV
-	A	EN-1907	09/23/11	JM
-	-	EN-1735	06/10/11	JM
ZONE	REV	DESCRIPTION	DATE	APPROVED

COPYRIGHT 2005 BRASSTECH, INC. THESE DRAWINGS AND THE DESIGNS DEPICTED HEREIN ARE THE PROPRIETARY PROPERTY OF BRASSTECH. ANY USE OR REPRODUCTION IS SUBJECT TO THE EXPRESS APPROVAL OF BRASSTECH. UNAUTHORIZED USE IS STRICTLY PROHIBITED. ALL RIGHTS RESERVED.

TESTING	-	-	-
ASSEMBLY	-	-	-
PLATING	-	-	-
POLISHING	-	NEXT ASSY	USED ON
MACHINING	-	APPLICATION	
TOOLING	FIXTURE #	REMOVE ALL BURRS AND SHARP EDGES	

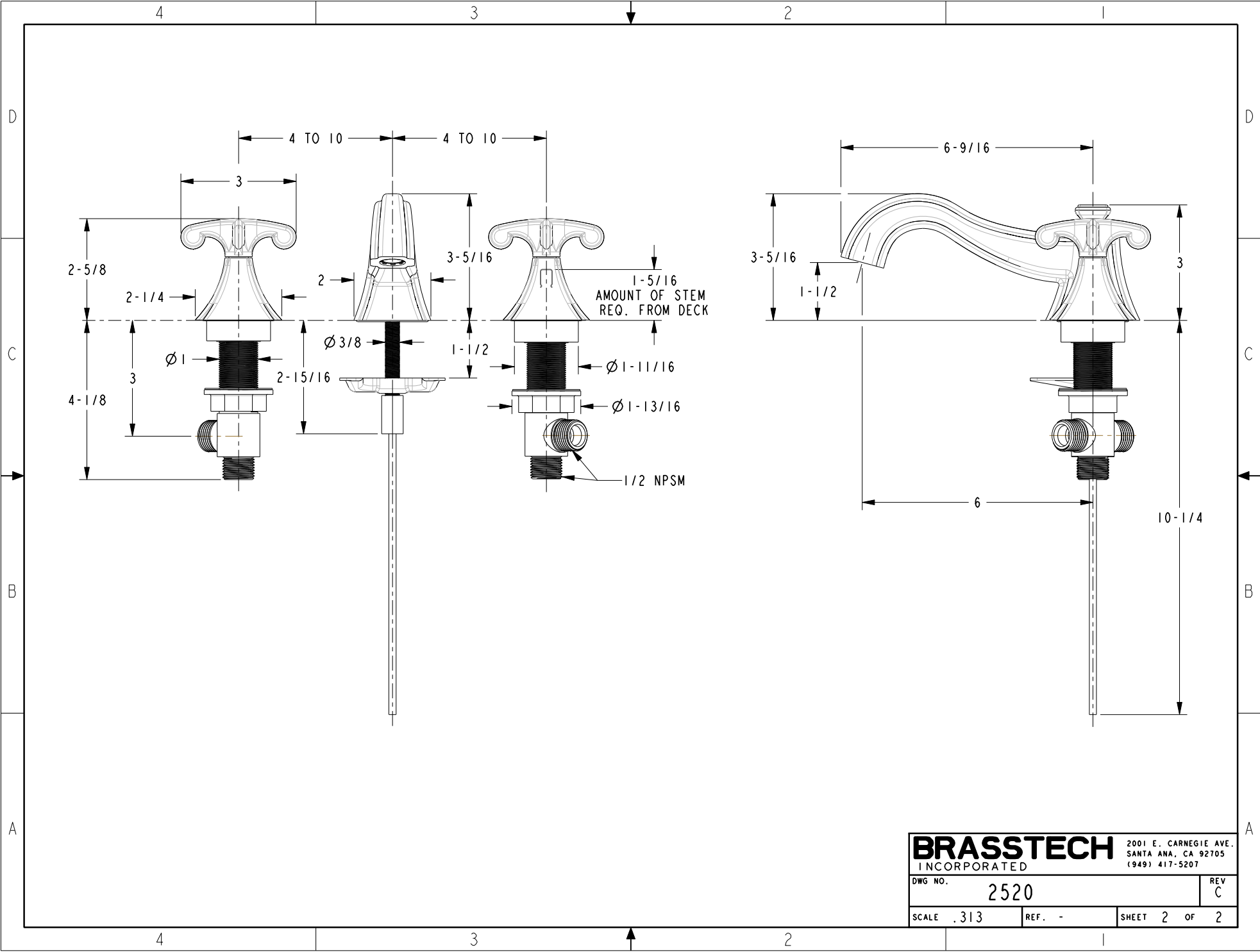
UNITS ARE: INCHES [MM]	
TOLERANCES ARE:	
FRACTIONS DECIMALS	ANGLES
±1/16"	±1°
.X ±.1 [2.5]	
.XX ±.06 [1.5]	
(X.XXX) DENOTES CRITICAL DIMS.	
ALL THREADS ARE CRITICAL	
DRAWN	RAVINDRA 06/22/15
CHECKED	JINSON 06/22/15
APPROVED	AN 06/25/15

**BRASSTECH** 2001 CARNEGIE AVE.  
INCORPORATED SANTA ANA, CA 92705  
(949) 417-5207

**W/S LAVATORY FAUCET-CROSS HANDLES**

DWG NO. **2520** REV C

SCALE .200 REF. - SHEET 1 OF 2



<b>BRASSTECH</b>		2001 E. CARNEGIE AVE.	
INCORPORATED		SANTA ANA, CA 92705	
		(949) 417-5207	
DWG NO.	2520	REV	C
SCALE	.313	REF.	-
		SHEET	2 OF 2