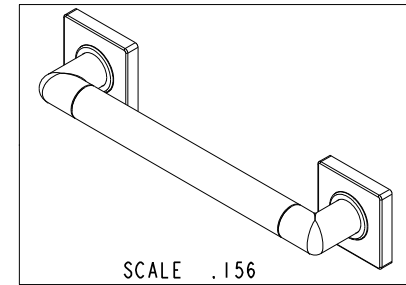
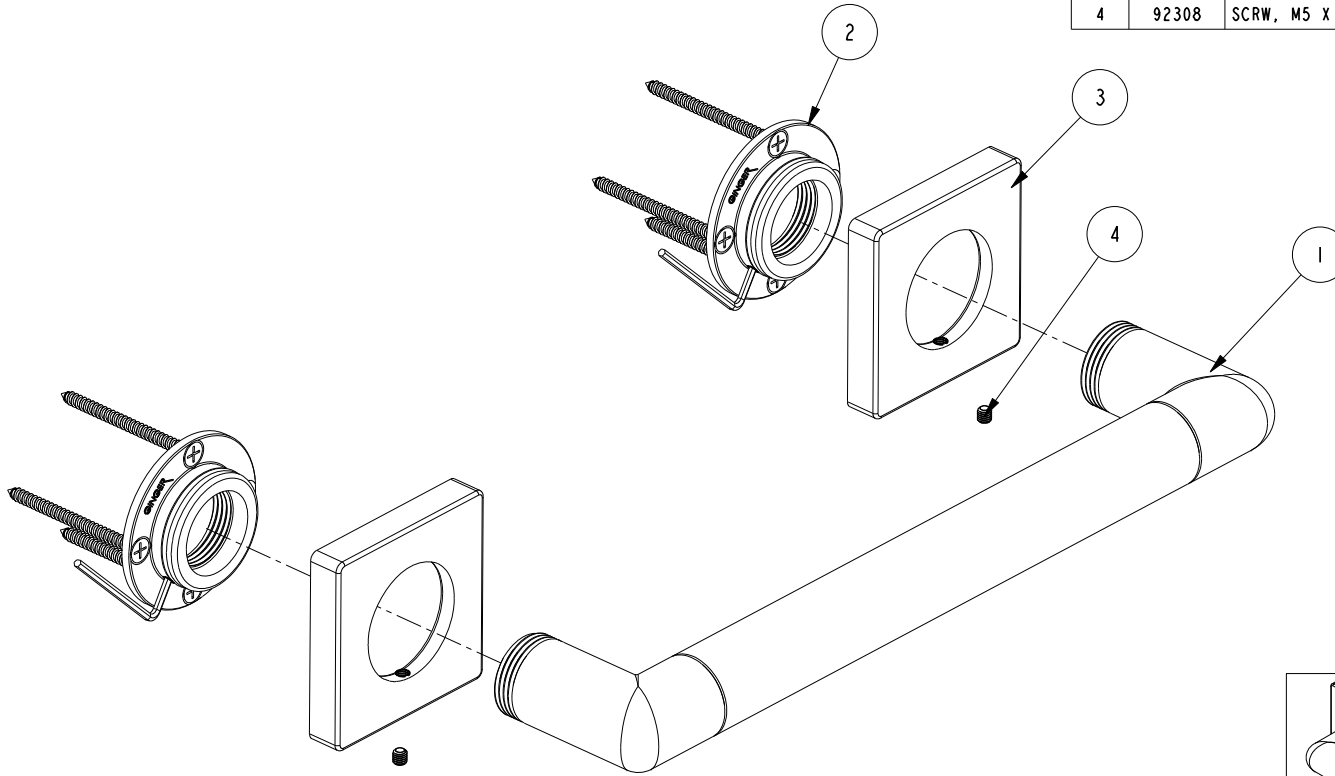


NOTES:

(NI) 1. FIT / FORM / FUNCTION SHALL FOLLOW PS-E.008.

BILL OF MATERIAL (CURRENT LEVEL)

| ITEM | PT/ASSY | DESCRIPTION | TYPE | QTY. |
|------|---------|---------------------------------|----------|------|
| 1 | 5080SQ | 12" GRAB BAR BRAZE ASM | ASSEMBLY | 1 |
| 2 | 20-287 | GRAB BAR MOUNTING HARDWARE PACK | ASSEMBLY | 2 |
| 3 | 5272 | GRAB BAR ROSETTE | PART | 2 |
| 4 | 92308 | SCRW, M5 X 5 SKT HD CUP PT SS | PART | 2 |



COPYRIGHT 2005 BRASSTECH, INC.
THESE DRAWINGS AND THE DESIGNS
DEPICTED HEREIN ARE THE PROPRIETARY
PROPERTY OF BRASSTECH. ANY USE
OR REPRODUCTION IS SUBJECT TO
THE EXPRESS APPROVAL OF BRASSTECH.
UNAUTHORIZED USE IS STRICTLY
PROHIBITED. ALL RIGHTS RESERVED.

| | | | |
|-------------------|----------------------------------|-------------|---------|
| TESTING | - | - | - |
| ASSEMBLY | - | - | - |
| PLATING | - | - | - |
| POLISHING | - | NEXT ASSY | USED ON |
| MACHINING | - | APPLICATION | |
| TOOLING FIXTURE # | REMOVE ALL BURRS AND SHARP EDGES | | |

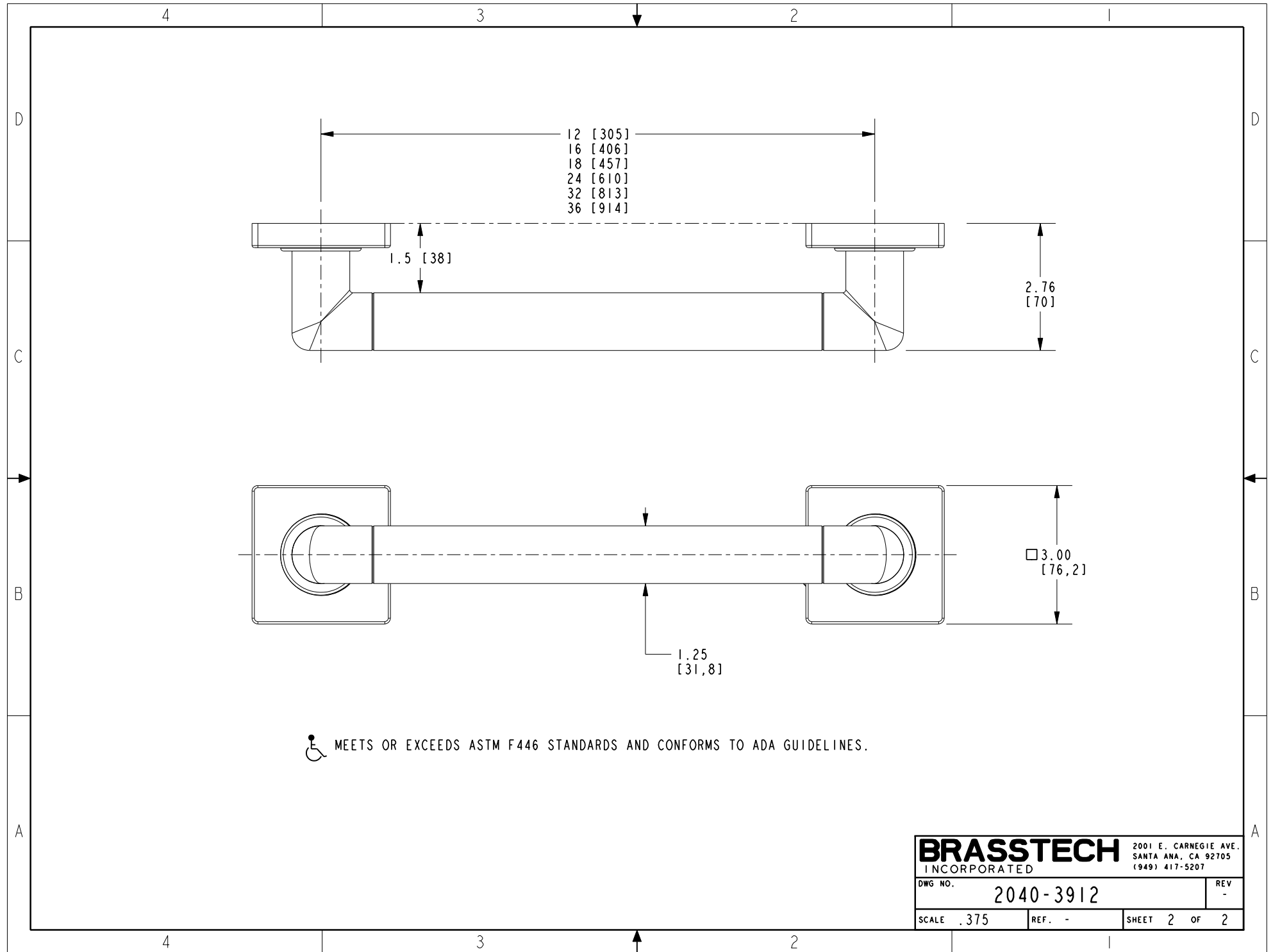
UNITS ARE: INCHES [MM]
TOLERANCES ARE:
FRACTIONS DECIMALS ANGLES
 $\pm 1/16"$.X $\pm .1$ [2.5] $\pm 1^\circ$
.XX $\pm .06$ [1.5]
(X.XXX) DENOTES CRITICAL DIMS.
ALL THREADS ARE CRITICAL

BRASSTECH 2001 CARNEGIE AVE.
INCORPORATED SANTA ANA, CA 92705
(949) 417-5207

GRAB BAR 12"

| - | - | EN-3279b | 07/03/17 | J.M. |
|------|-----|-------------|----------|----------|
| ZONE | REV | DESCRIPTION | DATE | APPROVED |

| | | | |
|----------|-----------|----------|---|
| DWG NO. | 2040-3912 | REV | - |
| APPROVED | J.M. | 04/10/17 | |
| SCALE | .375 | REF. | - |
| SHEET | 1 | OF | 2 |




 MEETS OR EXCEEDS ASTM F446 STANDARDS AND CONFORMS TO ADA GUIDELINES.

| | | |
|------------------|-----------|-----------------------|
| BRASSTECH | | 2001 E. CARNEGIE AVE. |
| INCORPORATED | | SANTA ANA, CA 92705 |
| | | (949) 417-5207 |
| DWG NO. | 2040-3912 | REV - |
| SCALE .375 | REF. - | SHEET 2 OF 2 |