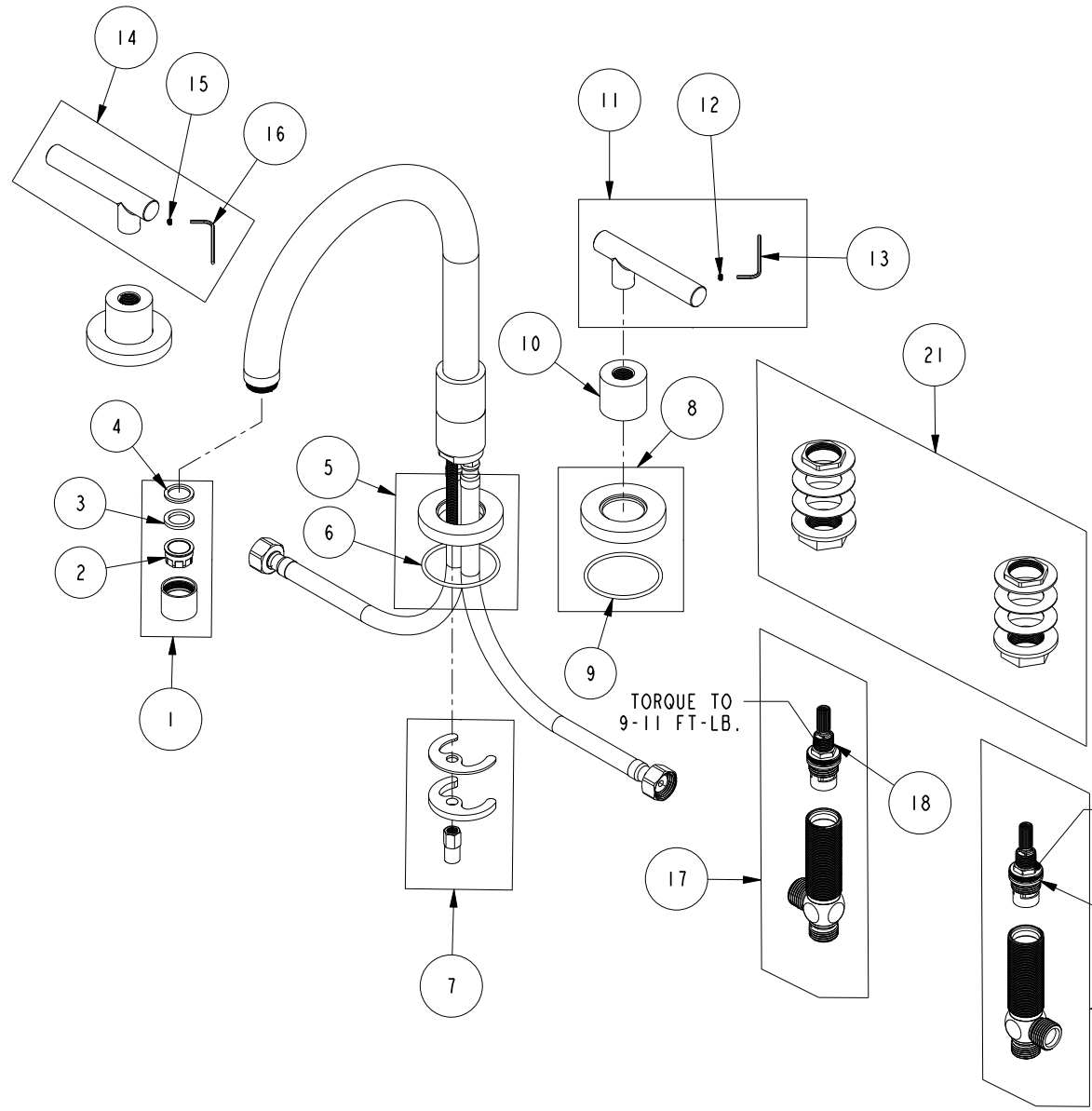


# REPLACEMENT PARTS



ITEM	PT/ASSY	SPECIFY FINISH	DESCRIPTION
1	2-112	YES	AERATOR ASM
2	11915		AERATOR INSERT STD, 1.8 GPM
3	91014		WSHR, .59 ID X .84 OD X .095 THK, FLT, RUBBER NSF 61
4	91040		WSHR, .590 ID X .825 OD X .072 THK, FLT, RUBBER NSF 61
5	2-101	YES	SPOUT BASE RING ASM
6	91753		O-RING, # 2-136, EP, 50 DURO - GREY
7	1-491		SPOUT MOUNTING KIT
8	2-100	YES	ESCUTCHEON - ASSEMBLY
9	91753		O-RING, # 2-136, EP, 50 DURO - GREY
10	10620	YES	BONNET
11	2-111C	YES	HANDLE LEVER ASM, COLD
12	92000		SCREW 8 - 32 X 1/8 SS
13	10192		HEX KEY TOOL, #8 5/64
14	2-111H	YES	HANDLE LEVER ASM, HOT
15	92000		SCREW 8 - 32 X 1/8 SS
16	10192		HEX KEY TOOL, #8 5/64
17	1-527		W/S CART/BODY ASM (HOT)
18	1-002		W/S CARTRIDGE - HOT
19	1-526		W/S CART/BODY ASM (COLD)
20	1-001		W/S CARTRIDGE - COLD
21	1-027		WIDE SPREAD MOUNTING HARDWARE

**KITCHEN FAUCET  
9901L**

REV E EN-4748 12/06/23 APPROVED RS

**NEWPORT BRASS.**

t: 949.417.5207 | www.newportbrass.com