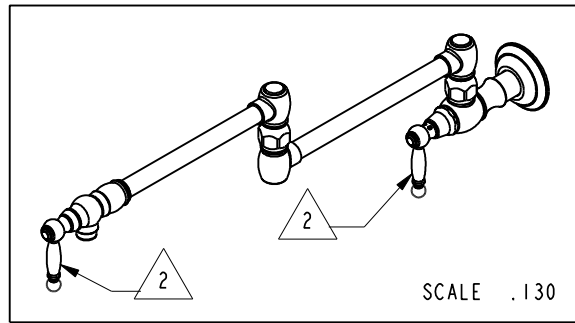


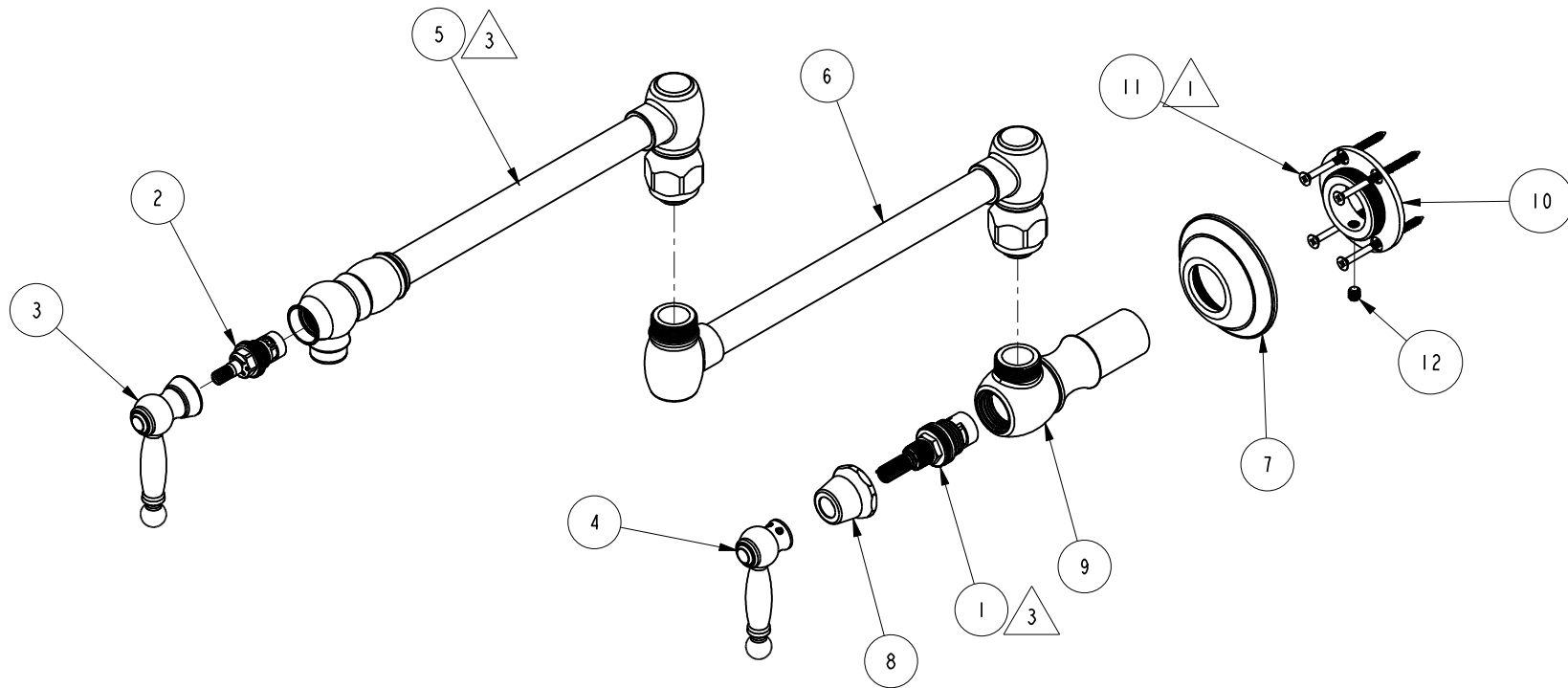
NOTES:

- 1. PACK THESE ITEMS IN A PLASTIC BAG.
- 2. HANDLE IN CLOSE POSITION.
- 3. INSTALLATION TORQUE 11-14 LB-FT.



BILL OF MATERIAL (CURRENT LEVEL)

ITEM	PT/ASSY	DESCRIPTION	TYPE	QTY.
1	1-002	W/S CARTRIDGE - HOT	PART	1
2	1-134	CARTR 3/8 HOT 1/4 TR	PART	1
3	2-545	LEVER HANDLE ASM, TRAD	ASSEMBLY	1
4	2-546	LEVER HANDLE ASM, TRAD	ASSEMBLY	1
5	2-549	UPPER ARM ASM, TRAD	ASSEMBLY	1
6	2-550	LOWER ARM ASM, TRAD	ASSEMBLY	1
7	2-555	FLANGE ASM, TRAD	ASSEMBLY	1
8	10331	BONNET FOR 933, 934	PART	1
9	11299	VALVE BODY, WALL-END	PART	1
10	11301	FLANGE, MOUNTING	PART	1
11	92223	SCRW, #8 X 2-1/2 PHL FLT HD SS	PART	4
12	92231	SCRW, 1/4-20 X 1/4 SKT HD CUP PT SS	PART	1



COPYRIGHT 2005 BRASSTECH, INC. THESE DRAWINGS AND THE DESIGNS DEPICTED HEREIN ARE THE PROPRIETARY PROPERTY OF BRASSTECH. ANY USE OR REPRODUCTION IS SUBJECT TO THE EXPRESS APPROVAL OF BRASSTECH. UNAUTHORIZED USE IS STRICTLY PROHIBITED. ALL RIGHTS RESERVED.

**BRASSTECH**  
INCORPORATED  
2001 E. CARNEGIE AVE.  
SANTA ANA, CA 92705  
(949) 417-5207

POT FILLER, WALL, LEVER, TRAD

ASSY. NO.

9482

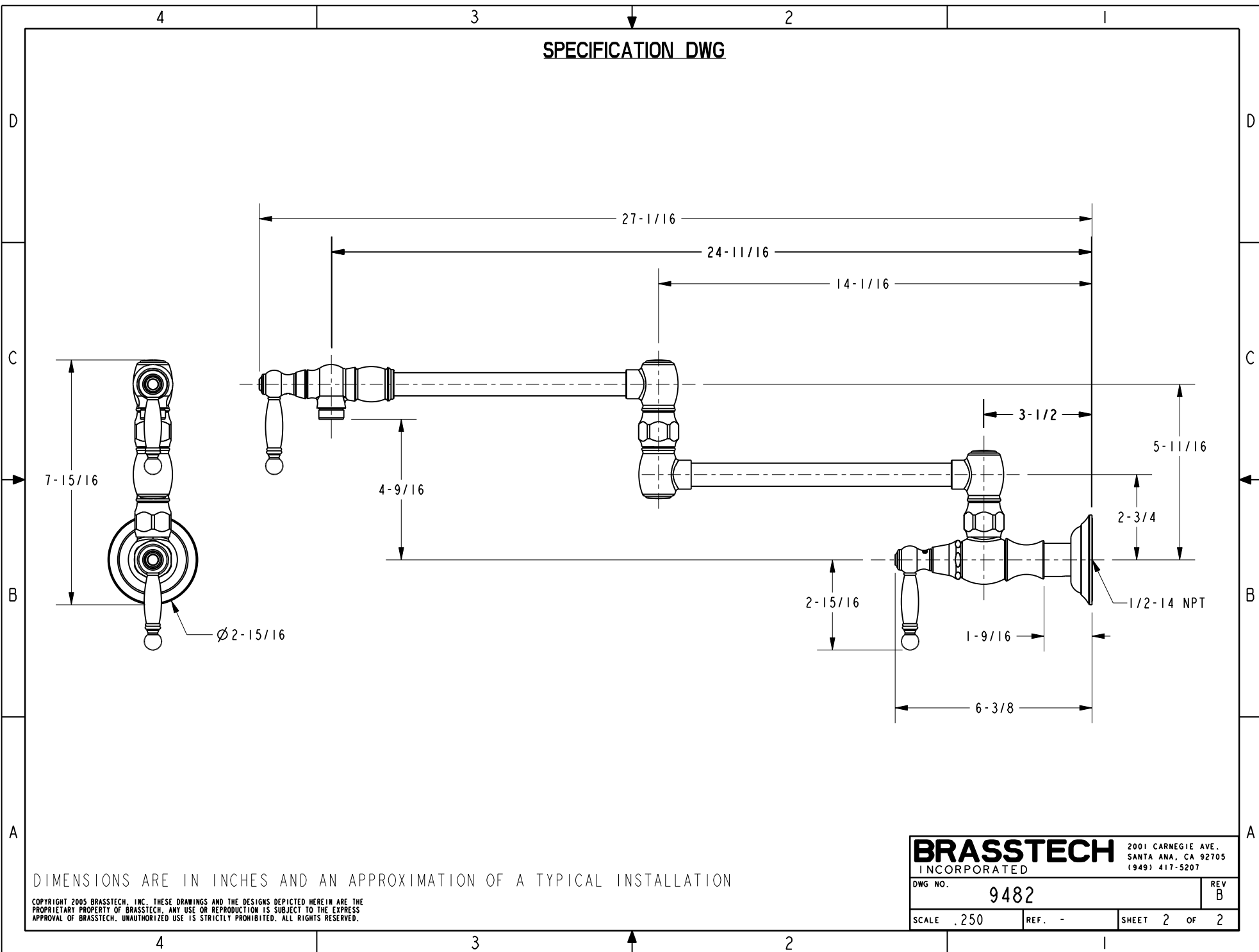
SCALE .250

REF. -

SHEET 1 OF 2

B	EN-2528	05/08/13
A	EO-0701	08/25/06
-	EO-0641	01/18/06
REV	REV DESC	DATE

SPECIFICATION DWG



DIMENSIONS ARE IN INCHES AND AN APPROXIMATION OF A TYPICAL INSTALLATION

COPYRIGHT 2005 BRASSTECH, INC. THESE DRAWINGS AND THE DESIGNS DEPICTED HEREIN ARE THE PROPRIETARY PROPERTY OF BRASSTECH. ANY USE OR REPRODUCTION IS SUBJECT TO THE EXPRESS APPROVAL OF BRASSTECH. UNAUTHORIZED USE IS STRICTLY PROHIBITED. ALL RIGHTS RESERVED.

<b>BRASSTECH</b>		2001 CARNEGIE AVE.	
INCORPORATED		SANTA ANA, CA 92705	
DWG NO. 9482		REV B	
SCALE .250	REF. -	SHEET 2 OF 2	