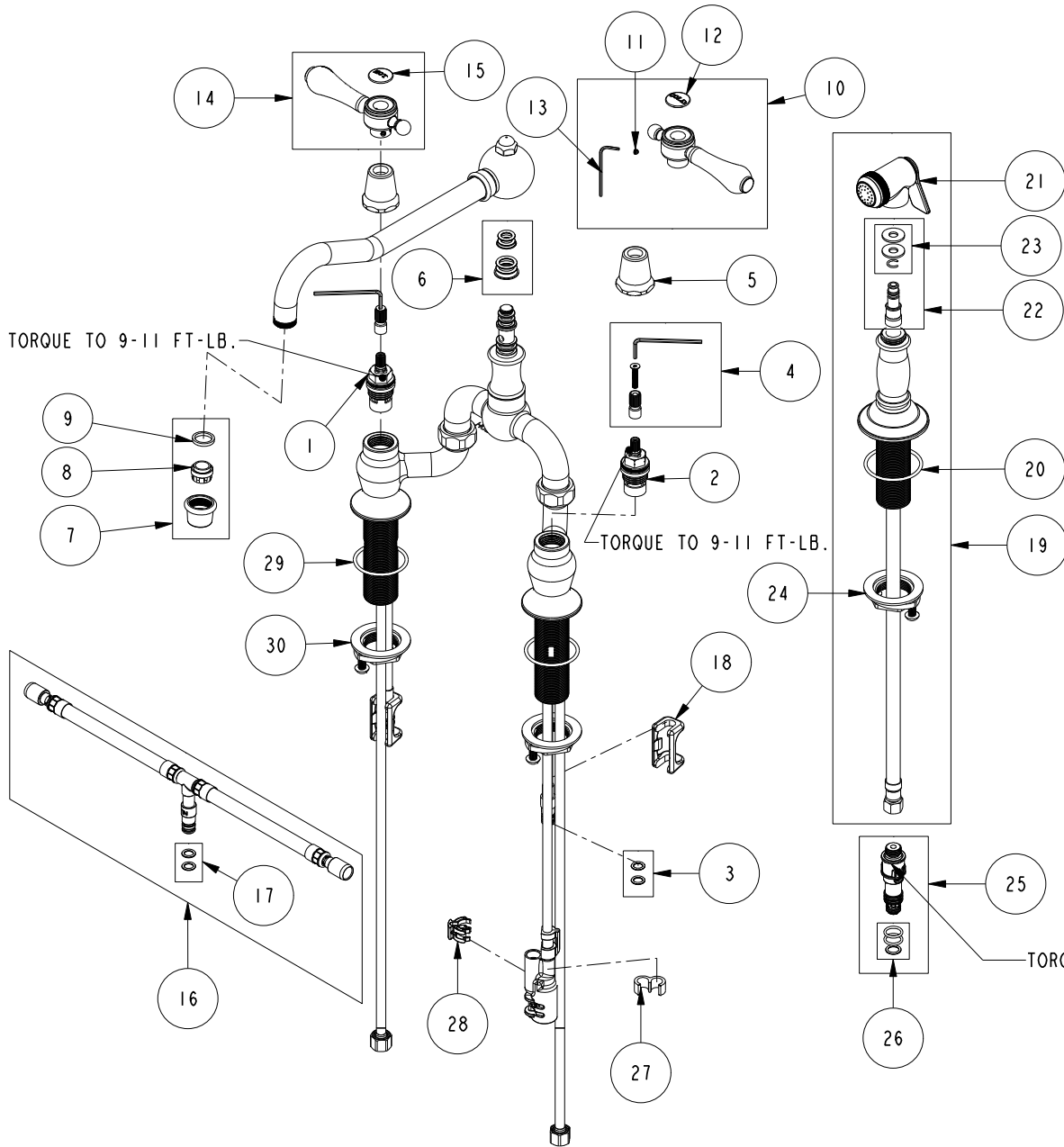


REPLACEMENT PARTS



ITEM	PT/ASSY	SPECIFY FINISH	DESCRIPTION
1	1-006		C/S VALVE CARTRIDGE - HOT
2	1-005		C/S VALVE CARTRIDGE - COLD
3	1-399		O-RING KIT FOR SPOUT PEX CONECTION
4	10-304		CARTRIDGE STEM ADAPTER KIT
5	12259	YES	HANDLE BONNET - TUB FILLER
6	10-302		SPOUT O-RING AND WASHER KIT
7	2-399	YES	AERATOR ASM BRIDGE
8	11916		AERATOR JR. INSERT-1.8 GPM
9	91500		GSKT, .578 ID X .728 OD X .102 THK EPDM
10	2-133	YES	HANDLE ASSEMBLY - COLD
11	92000		SCREW 8 - 32 X 1/8 SS
12	1-107		COLD BUTTON ASSEMBLY W/ ADHESIVE
13	10192		HEX KEY TOOL, #8 5/64
14	2-134	YES	HANDLE ASSEMBLY - HOT
15	1-108		HOT BUTTON ASSEMBLY W/ ADHESIVE
16	1-777		TEE HOSE ASSY
17	1-399		O-RING KIT FOR SPOUT PEX CONECTION
18	91568		RETAINER CLIP
19	129	YES	KITCHEN SPRAY HEAD
20	91762		O-RING, #2-132, EP, 50 DURO - GREY
21	2-119B	YES	SPRAY HEAD ASM
22	1-778		SIDE SPRAY HOSE ASSY
23	1-397		SIDE SPRAY WASHERS
24	1-393		1-1/8 18 UNEF MOUNTING KIT
25	10-303		PEX DIVERTER ASM FOR SIDE SPRAY HOSE
26	1-398		O-RING KIT FOR SIDE SPRAY PEX DIVERTER
27	91811		TEE HOSE CLIP
28	91812		DIVERTER CLIP
29	91768		O-RING, #2-130, EP, 50 DURO - GREY
30	1-393		1-1/8 18 UNEF MOUNTING KIT

KITCHEN BRIDGE FAUCET W/ SIDE SPRAY
9453-1

REV K EN-4806 04/15/24 APPROVED RS

NEWPORT BRASS.

t: 949.417.5207 | www.newportbrass.com