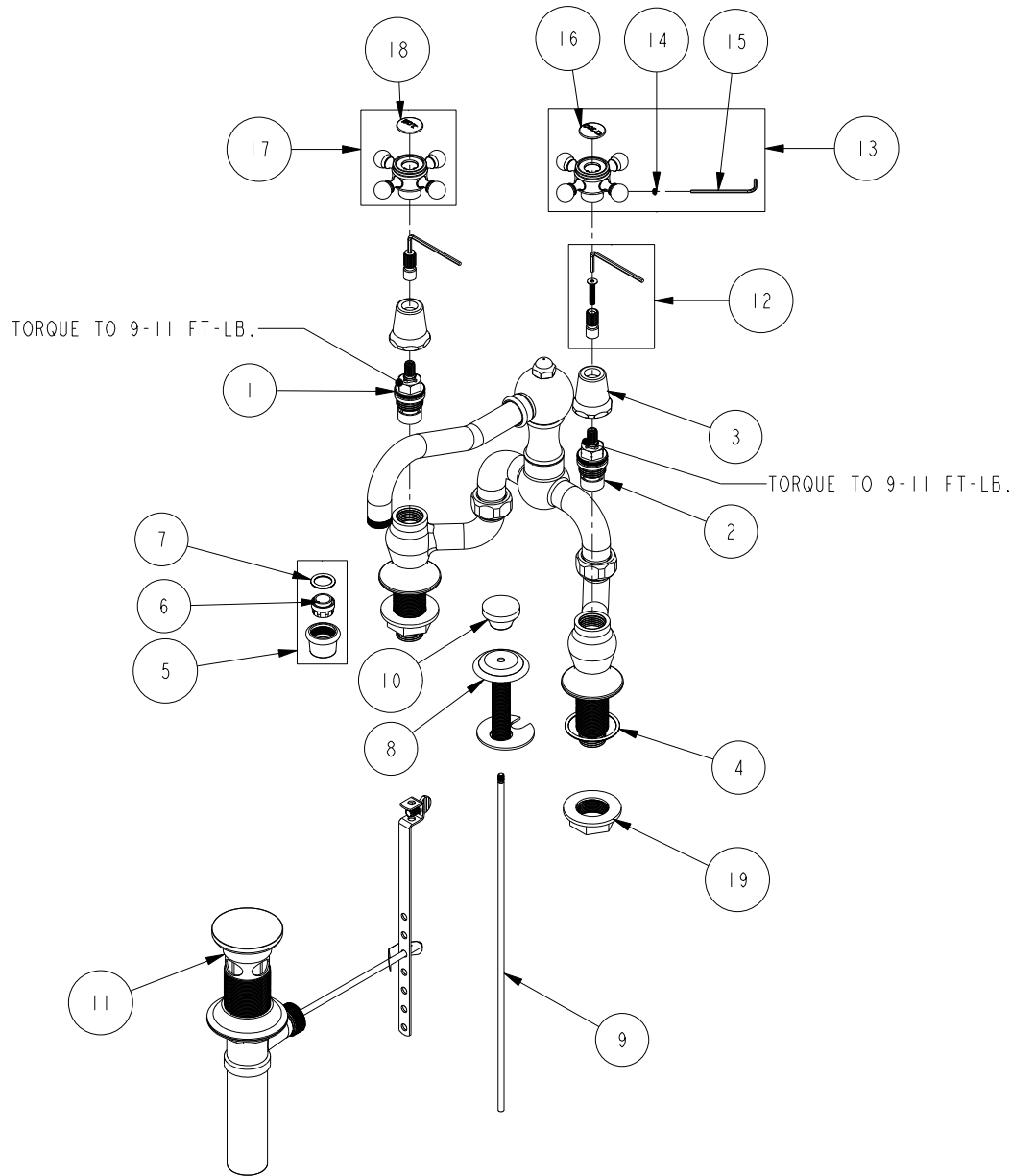


# REPLACEMENT PARTS



ITEM	PT/ASSY	SPECIFY FINISH	DESCRIPTION
1	1-006		C/S VALVE CARTRIDGE - HOT
2	1-005		C/S VALVE CARTRIDGE - COLD
3	12259	YES	HANDLE BONNET - TUB FILLER
4	91767		O-RING, #2-128, 50 DURO
5	2-648	YES	AERATOR ASM
6	12403		AERATOR INSERT, Jr. SIZE, 1.2 GPM
7	91028		O-RING, #2- 113, EPDM, 65-75 DURO, NSF 61
8	2-400	YES	POP UP GUIDE ASM
9	10288	YES	3/16" POP UP ROD
10	10961	YES	SMOOTH POP - UP KNOB
11	325	YES	POP UP ASSEMBLY
12	10-304		CARTRIDGE STEM ADAPTER KIT
13	2-142	YES	HANDLE ONLY, COLD
14	92000		SCREW 8 - 32 X 1/8 SS
15	10192		HEX KEY TOOL, #8 5/64
16	1-107		COLD BUTTON ASSEMBLY W/ ADHESIVE
17	2-141	YES	HANDLE ONLY, HOT
18	1-108		HOT BUTTON ASSEMBLY W/ ADHESIVE
19	91473		FLANGE NUT 1.006"-20

LAV BRIDGE FAUCET  
930B

REV H EN-4740 11/28/23 APPROVED R.S.

**NEWPORT BRASS.**

t: 949.417.5207 | [www.newportbrass.com](http://www.newportbrass.com)