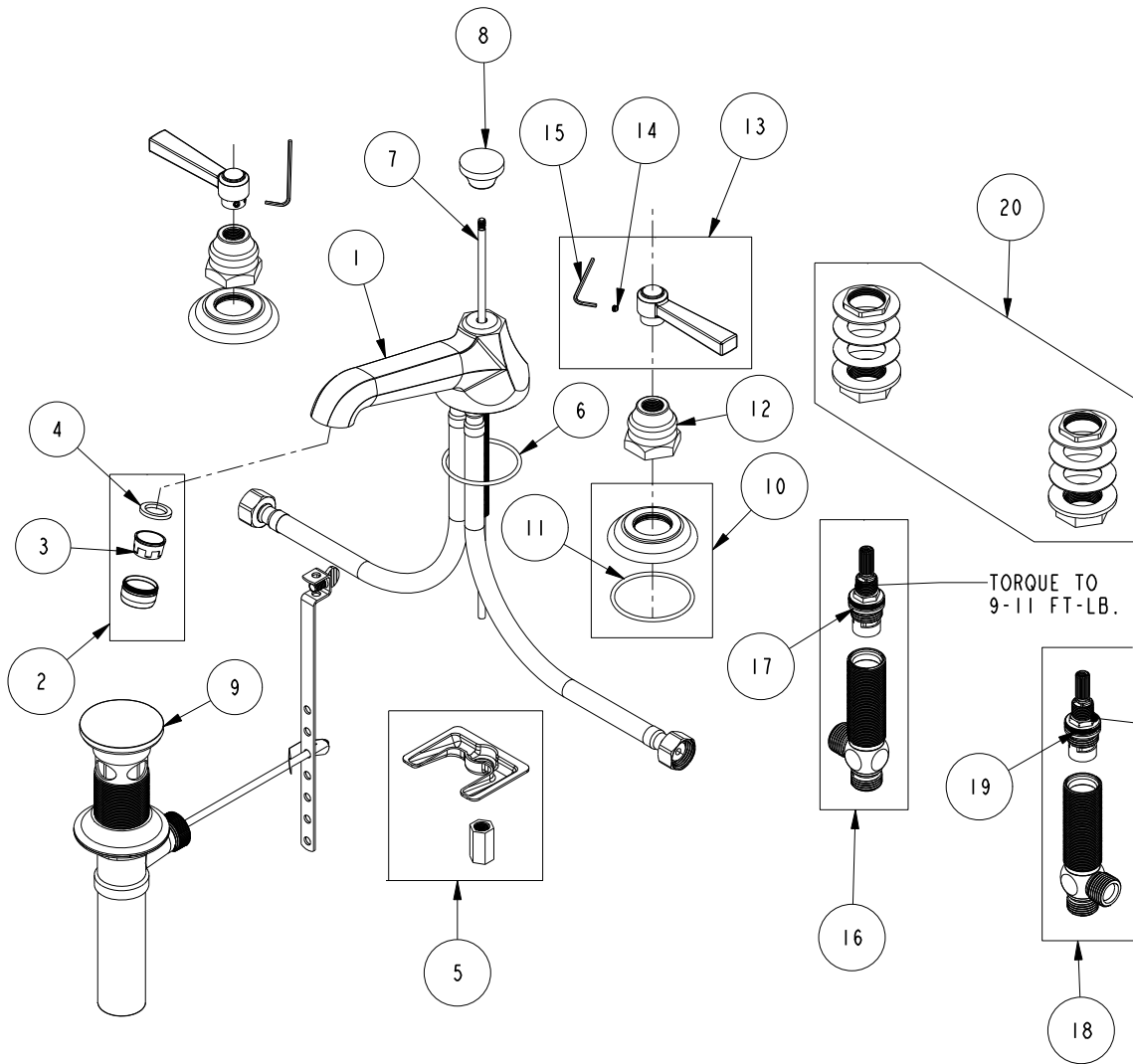


# REPLACEMENT PARTS



ITEM	PT/ASSY	SPECIFY FINISH	DESCRIPTION
1	3-346	YES	ASSY, SPOUT
2	2-627	YES	AERATOR ASM
3	12404		AERATOR INSERT, STD SIZE, 1.2 GPM
4	91014		WSHR, .59 ID X .84 OD X .095 THK, FLT, RUBBER NSF 61
5	1-514		SPOUT MOUNTING KIT ASM
6	91756		O-RING #2-134, EP, 50 DURO - GREY
7	10288	YES	3/16" POP UP ROD
8	10961	YES	SMOOTH POP - UP KNOB
9	325	YES	POP UP ASSEMBLY
10	20-681	YES	ESCUTCHEON ASSEMBLY
11	91753		O-RING, # 2-136, EP, 50 DURO - GREY
12	10523	YES	HEX ESCUTCHEON BONNET
13	2-436	YES	LEVER HANDLE ASM
14	92000		SCREW 8 - 32 X 1/8 SS
15	10192		HEX KEY TOOL, #8 5/64
16	1-527		W/S CART/BODY ASM (HOT)
17	1-002		W/S CARTRIDGE - HOT
18	1-526		W/S CART/BODY ASM (COLD)
19	1-001		W/S CARTRIDGE - COLD
20	1-027		WIDE SPREAD MOUNTING HARDWARE

**WIDESPREAD FAUCET  
910**

REV G EN-4728 11/07/23 APPROVED RS

**NEWPORT BRASS.**

t: 949.417.5207 | www.newportbrass.com