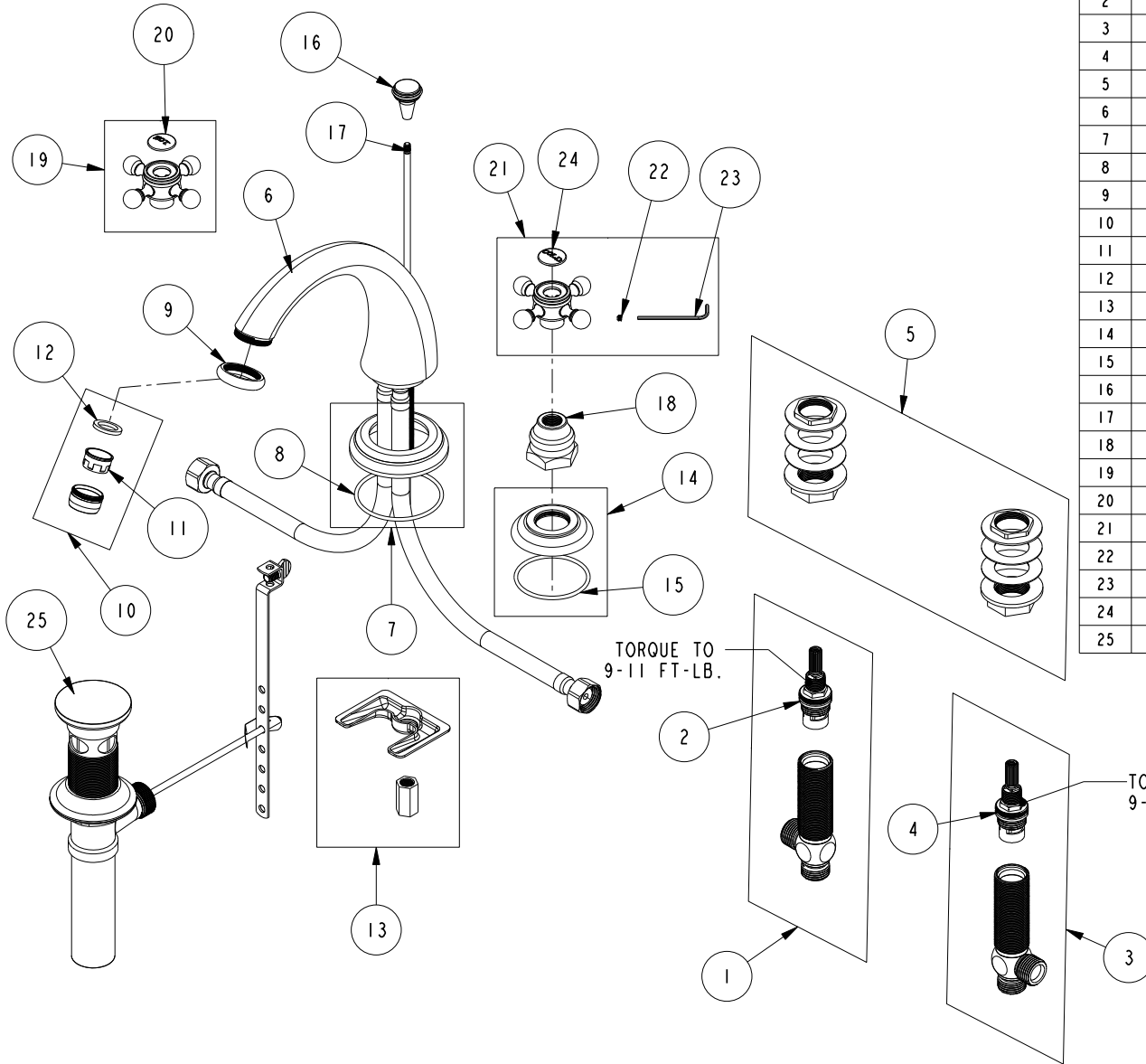


REPLACEMENT PARTS



ITEM	PT/ASSY	SPECIFY FINISH	DESCRIPTION
1	1-527		W/S CART/BODY ASM (HOT)
2	1-002		W/S CARTRIDGE - HOT
3	1-526		W/S CART/BODY ASM (COLD)
4	1-001		W/S CARTRIDGE - COLD
5	1-027		WIDE SPREAD MOUNTING HARDWARE
6	3-348	YES	W/S SPOUT ASM
7	20-728	YES	ESCUTCHEON ASM
8	91755		O-RING, #2-142, EPDM, 50 DURO - GREY
9	10297	YES	RING TIP W/S SPOUT - SMO
10	2-627	YES	AERATOR ASM
11	12404		AERATOR INSERT, STD SIZE, 1.2 GPM
12	91014		WSHR, .59 ID X .84 OD X .095 THK, FLT, RUBBER NSF 61
13	1-514		SPOUT MOUNTING KIT ASM
14	20-681	YES	ESCUTCHEON ASSEMBLY
15	91753		O-RING, # 2-136, EP, 50 DURO - GREY
16	10021	YES	POP-UP KNOB
17	10288	YES	3/16" POP UP ROD
18	10523	YES	HEX ESCUTCHEON BONNET
19	2-141	YES	HANDLE ONLY, HOT
20	1-108		HOT BUTTON ASSEMBLY W/ ADHESIVE
21	2-142	YES	HANDLE ONLY, COLD
22	92000		SCREW 8 - 32 X 1/8 SS
23	10192		HEX KEY TOOL, #8 5/64
24	1-107		COLD BUTTON ASSEMBLY W/ ADHESIVE
25	325	YES	POP UP ASSEMBLY

**WIDESPREAD FAUCET
890**

REV H EN-4728 10/23/23 APPROVED RS

NEWPORT BRASS.

t: 949.417.5207 | www.newportbrass.com