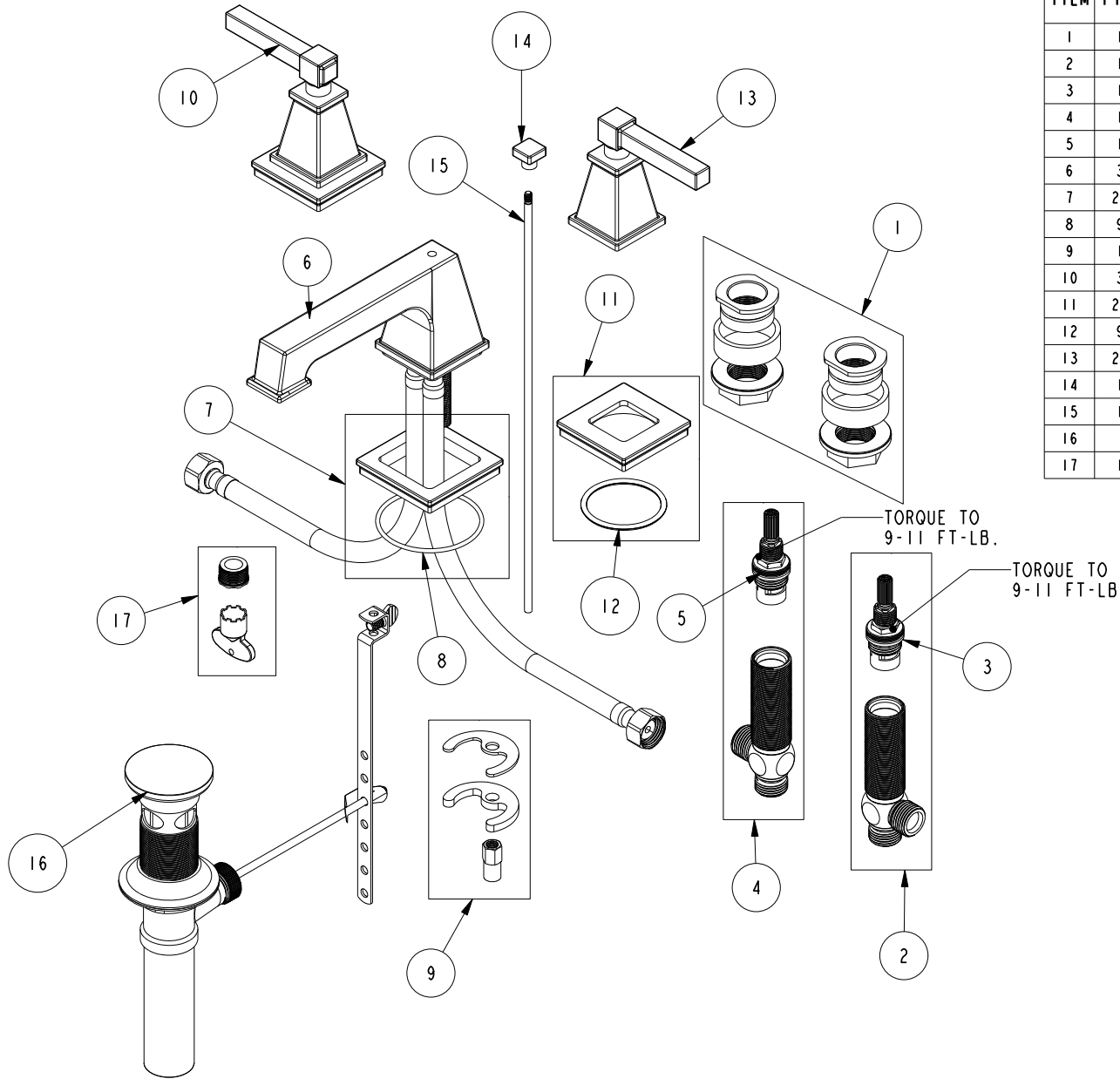


# REPLACEMENT PARTS



| ITEM | PT/ASSY | SPECIFY FINISH | DESCRIPTION                          |
|------|---------|----------------|--------------------------------------|
| 1    | 1-226   |                | WIDESPREAD MOUNTING HARDWARE         |
| 2    | 1-527   |                | W/S CART/BODY ASM (HOT)              |
| 3    | 1-002   |                | W/S CARTRIDGE - HOT                  |
| 4    | 1-526   |                | W/S CART/BODY ASM (COLD)             |
| 5    | 1-001   |                | W/S CARTRIDGE - COLD                 |
| 6    | 3-579   | YES            | W/S SPOUT ASM                        |
| 7    | 20-724  | YES            | BASE ESCUTCHEON ASM                  |
| 8    | 91769   |                | O-RING, #2-144, 50 DURO              |
| 9    | 1-491   |                | SPOUT MOUNTING KIT                   |
| 10   | 3-580   | YES            | LEVER HANDLE W/ESC.                  |
| 11   | 20-193  | YES            | ESCUTCHEON ASM                       |
| 12   | 91749   |                | O-RING, #2-225, EPDM, 50 DURO - GREY |
| 13   | 20-194  | YES            | LEVER HANDLE ASM                     |
| 14   | 12551   | YES            | POP UP KNOB                          |
| 15   | 10288   | YES            | 3/16" POP UP ROD                     |
| 16   | 325     | YES            | POP UP ASSEMBLY                      |
| 17   | 1-492   |                | AERATOR 1.2 GPM WITH KEY             |

**WIDESPREAD FAUCET  
3140**

REV E EN-4734 11/08/23 APPROVED KN

**NEWPORT BRASS.**

t: 949.417.5207 | www.newportbrass.com