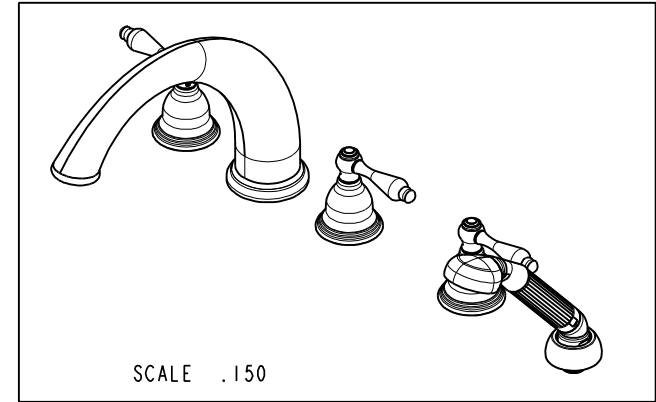
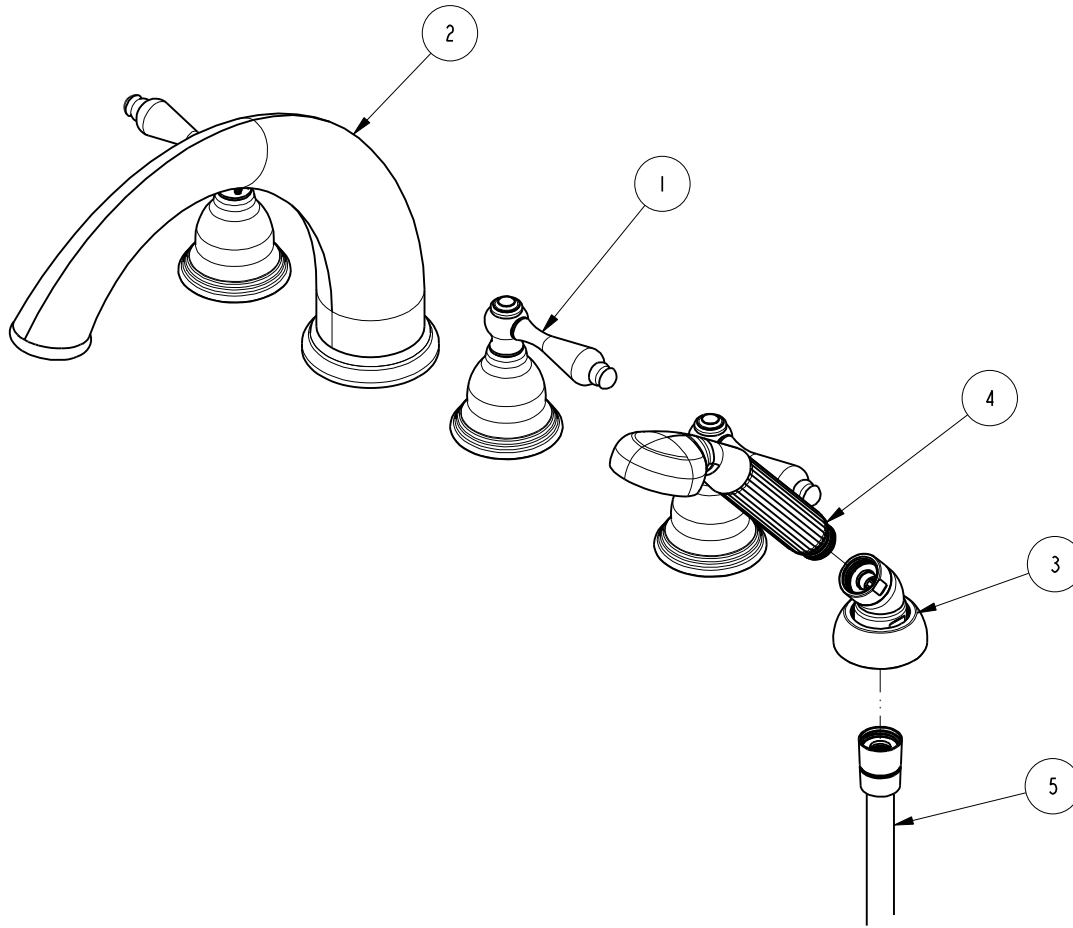


NOTES:

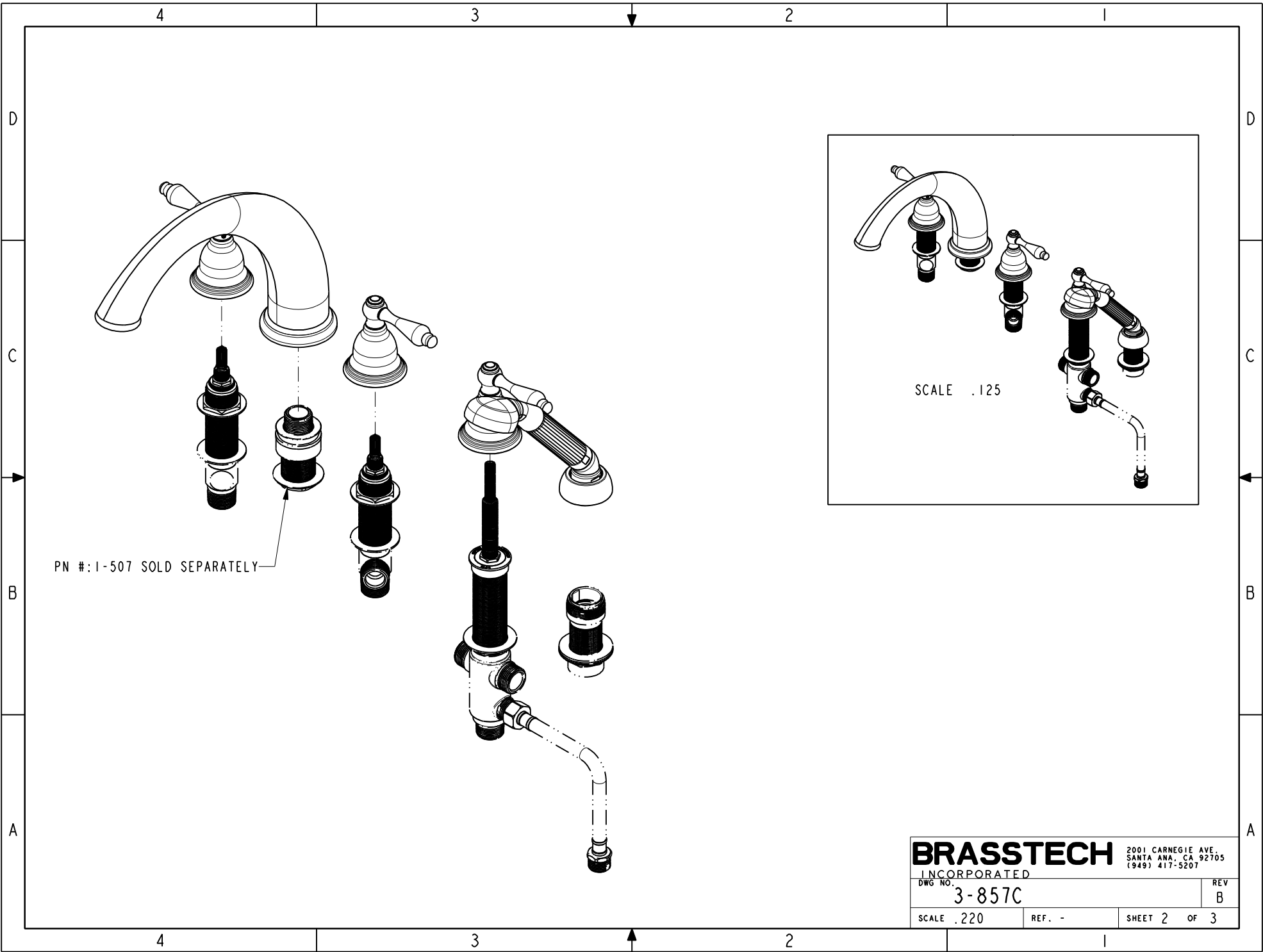
1. TO INSPECT ASSEMBLY, FOLLOW FIRST ARTICLE AND IN PROCESS INSPECTION SHEET.

BILL OF MATERIAL (CURRENT LEVEL)

ITEM	PT/ASSY	DESCRIPTION	TYPE	QTY.
1	3-202	TRIM KIT - STOP VALVE	ASSEMBLY	3
2	3-178	ROMAN TUB SPOUT	ASSEMBLY	1
3	6-289	DECK FLANGE TRIM	ASSEMBLY	1
4	280	HAND SHOWER WITH GROOVE	ASSEMBLY	1
5	284	59 IN. SPIRAL SHOWER HOSE	ASSEMBLY	1
6	1-507_1027	R/T 3 VALVE, QUICK CONT&EX	ASSEMBLY	1

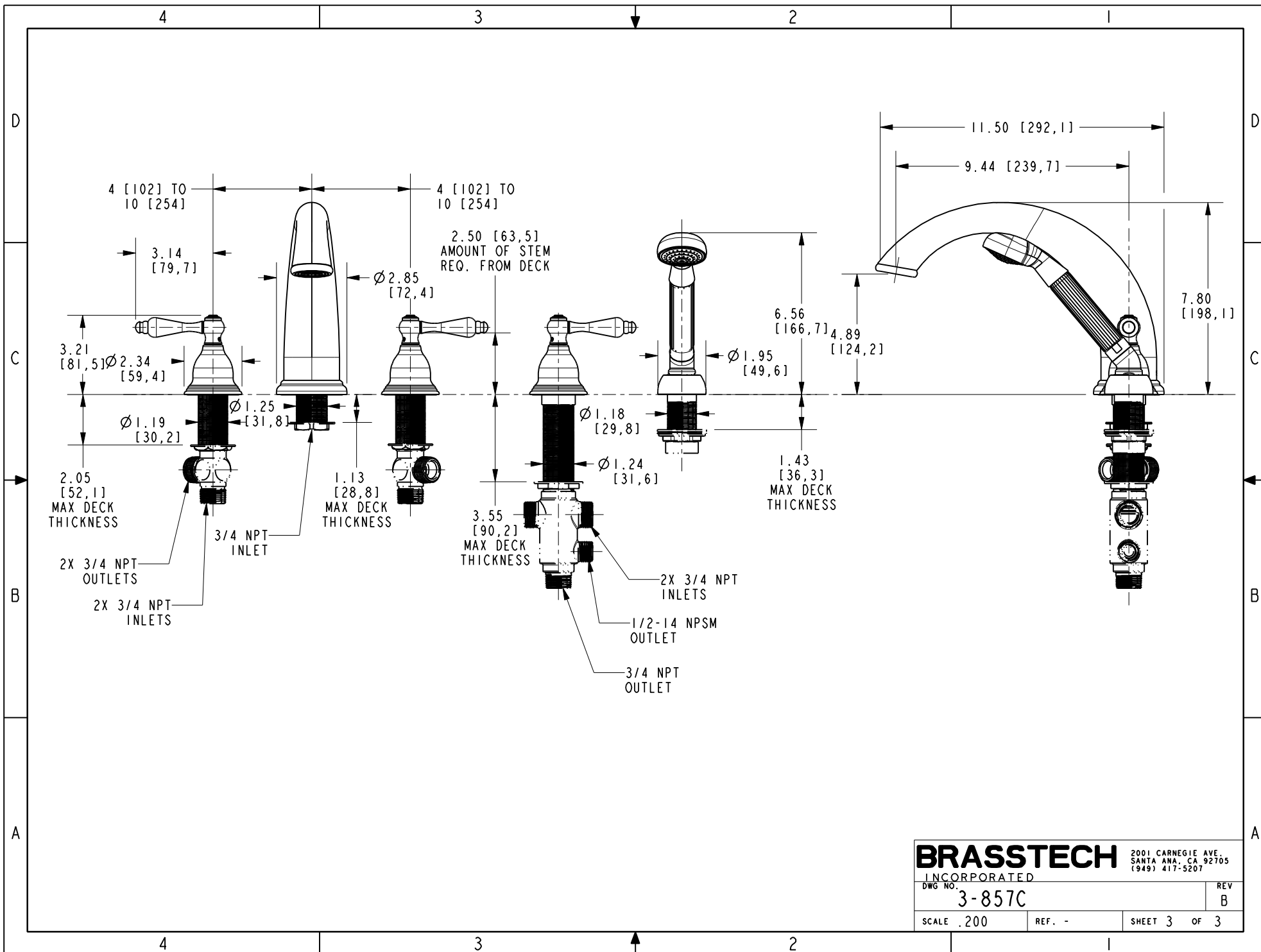


- B EN-4300w 02/02/21 R.S. - A EN-2032 01/07/14 - - - RELEASED - - ZONE REV DESCRIPTION DATE APPROVED					COPYRIGHT 2005 BRASSTECH, INC. THESE DRAWINGS AND THE DESIGNS DEPICTED HEREIN ARE THE PROPRIETARY PROPERTY OF BRASSTECH. ANY USE OR REPRODUCTION IS SUBJECT TO THE EXPRESS APPROVAL OF BRASSTECH. UNAUTHORIZED USE IS STRICTLY PROHIBITED. ALL RIGHTS RESERVED.			TESTING - - - ASSEMBLY - - - PLATING - - - POLISHING - NEXT ASSY USED ON MACHINING - APPLICATION		TOOLING FIXTURE # REMOVE ALL BURRS AND SHARP EDGES		UNITS ARE: INCHES [MM] TOLERANCES ARE: FRACTIONS DECIMALS ANGLES $\pm 1/16"$.X $\pm .1$ [2,5] $\pm 1^\circ$.XX $\pm .06$ [1,5]		BRASSTECH 2001 CARNEGIE AVE. INCORPORATED SANTA ANA, CA 92705 (949) 417-5207	
							(X.XXX) DENOTES CRITICAL DIMS. ALL THREADS ARE CRITICAL		DRAWN JINSON 02/02/21		TRIM KIT - 3 VALVE ROMAN TUB, 3-857C				
							CHECKED R.S. 02/02/21		DWG NO. 3-857C		REV B				
							APPROVED R.S. 02/02/21		SCALE .250		REF. - SHEET 1 OF 3				



PN #: 1-507 SOLD SEPARATELY

BRASSTECH		2001 CARNEGIE AVE. SANTA ANA, CA 92705 (949) 417-5207	
INCORPORATED		REV B	
DWG NO. 3-857C		REF. -	
SCALE .220	REF. -	SHEET 2 OF 3	



BRASSTECH		2001 CARNEGIE AVE. SANTA ANA, CA 92705 (949) 417-5207	
INCORPORATED			
DWG NO.	3-857C	REV	B
SCALE	.200	REF.	-
		SHEET	3 OF 3