

4

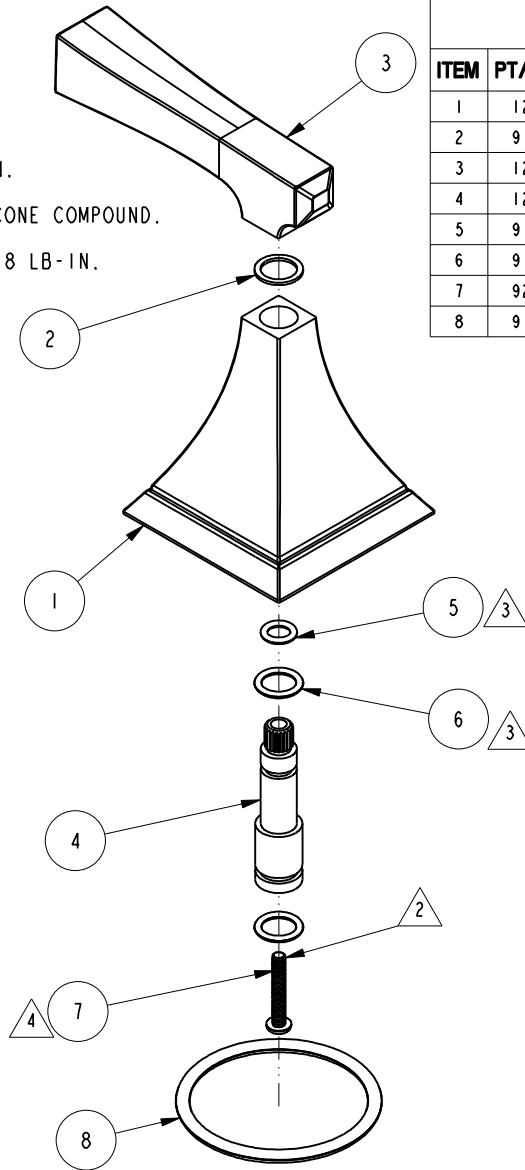
3

2

1

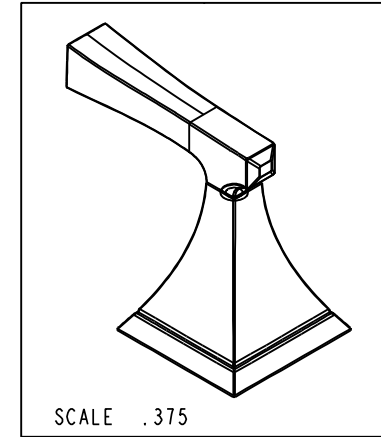
NOTES:

- (N1) 1. FIT / FORM / FUNCTION SHALL FOLLOW PS-E.008.
- (N2) 2. ITEM 7 AS RECEIVED HAS NYLON PATCH. IF NYLON PATCH IS MISSING, APPLY ADHENSIVE LOCTITE 680 APPROX. WHERE SHOWN.
- (N3) 3. APPLY LIGHT FILM OF DOW CORNING III SILICONE COMPOUND.
- (N4) 4. TORQUE REQUIRED TO TIGHTEN THE SCREW : 6-8 LB-IN.



BILL OF MATERIAL (CURRENT LEVEL)

ITEM	PT/ASSY	DESCRIPTION	TYPE	QTY.
1	12366	HANDLE ESCUTCHEON	PART	1
2	91371	WASHER, HANDLE	PART	1
3	12367	HANDLE LEVER	PART	1
4	12377	HANDLE ADAPTER	PART	1
5	91049	O-RING, #2- 010, EPDM, 65-75 DURO, NSF 6I	PART	1
6	91017	O-RING, #2- 012, EPDM, 65-75 DURO, NSF 6I	PART	2
7	92399	SCRW, 6-32 X 7/8" TORX BUTTON HD SS W/ NYLON PATCH	PART	1
8	91161	O-RING, #2-225, EPDM, 65-75 DURO	PART	1



D

D

C

C

B

B

A

A

TESTING	-	-	-
ASSEMBLY	-	-	-
PLATING	-	2575	2575
POLISHING	-	NEXT ASSY	USED ON
MACHINING	-	APPLICATION	
TOOLING FIXTURE #	REMOVE ALL BURRS AND SHARP EDGES		

UNITS ARE: INCHES [MM]	
TOLERANCES ARE:	
FRACTIONS DECIMALS	ANGLES
±1/16"	.X ±.1 [2.5] ±1°
	.XX ±.06 [1.5]
(X.XXX) DENOTES CRITICAL DIMS. ALL THREADS ARE CRITICAL	
DRAWN	RAVINDRA 11/28/16
CHECKED	JINSON 11/28/16
APPROVED	J.M 11/28/16

BRASSTECH 2001 CARNEGIE AVE. SANTA ANA, CA 92705 (949) 417-5207
INCORPORATED

LEVER HANDLE W/ESC.

DWG NO. **3-594** REV -

SCALE .500 REF. SHEET | OF |

COPYRIGHT 2005 BRASSTECH, INC. THESE DRAWINGS AND THE DESIGNS DEPICTED HEREIN ARE THE PROPRIETARY PROPERTY OF BRASSTECH. ANY USE OR REPRODUCTION IS SUBJECT TO THE EXPRESS APPROVAL OF BRASSTECH. UNAUTHORIZED USE IS STRICTLY PROHIBITED. ALL RIGHTS RESERVED.

-	-	EN-3185	11/28/16	J.M
ZONE	REV	DESCRIPTION	DATE	APPROVED

4

3

2

1