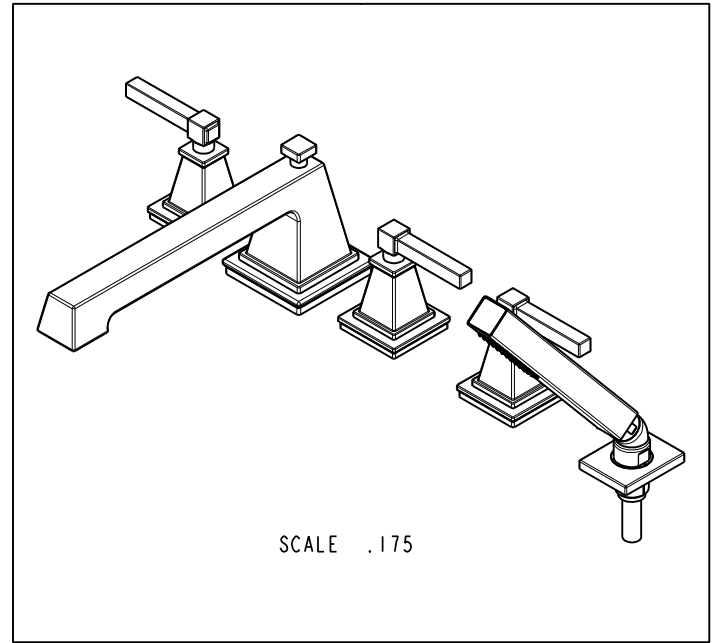
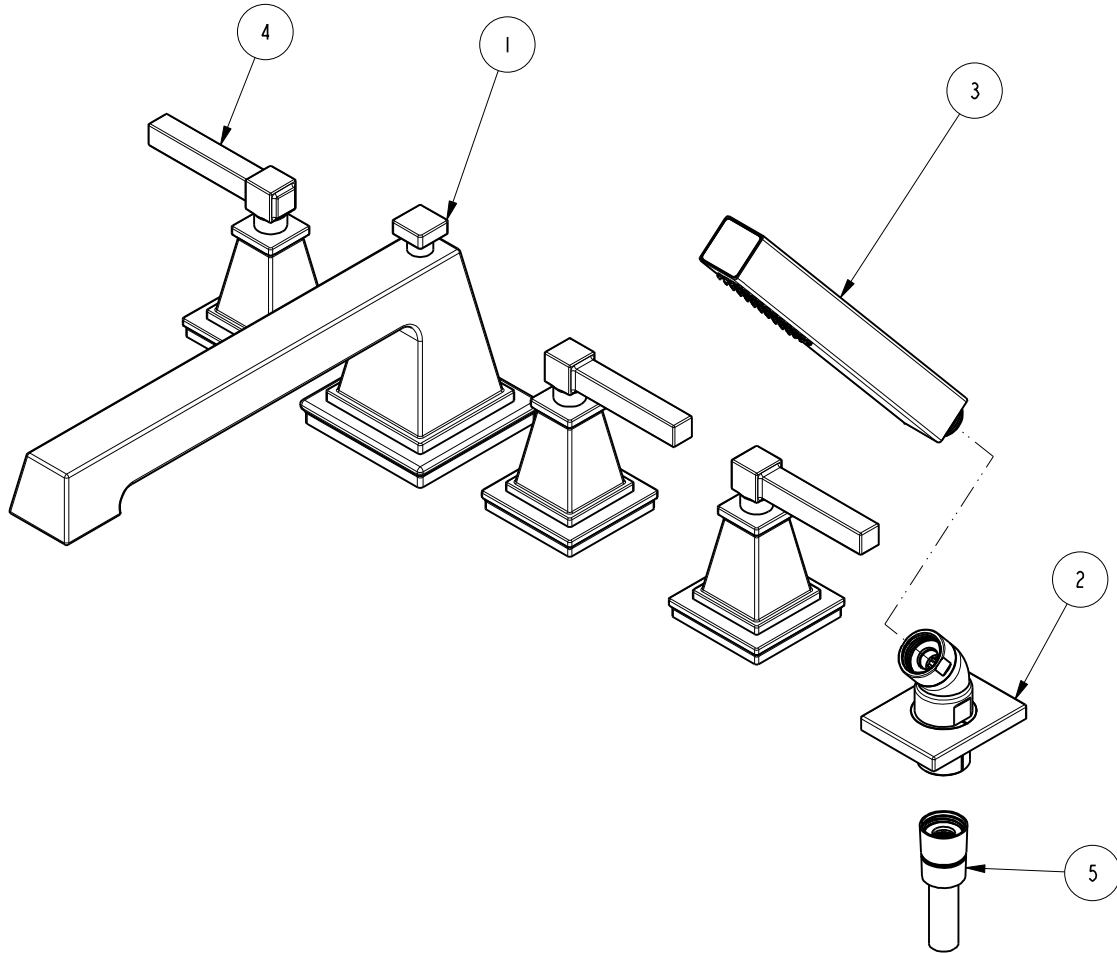


NOTES:

1. TO INSPECT ASSEMBLY, FOLLOW FIRST ARTICLE AND IN PROCESS INSPECTION SHEET.

**BILL OF MATERIAL (CURRENT LEVEL)**

| ITEM | PT/ASSY | DESCRIPTION               | TYPE     | QTY. |
|------|---------|---------------------------|----------|------|
| 1    | 3-582   | R/T SPOUT ASM             | ASSEMBLY | 1    |
| 2    | 6-289-4 | DECK FLANGE TRIM          | ASSEMBLY | 1    |
| 3    | 283-102 | SQUARE WAND HANDSHOWER    | ASSEMBLY | 1    |
| 4    | 3-580   | LEVER HANDLE W/ESC.       | ASSEMBLY | 3    |
| 5    | 284     | 59 IN. SPIRAL SHOWER HOSE | ASSEMBLY | 1    |



SCALE .175

| ZONE | REV | DESCRIPTION | DATE     | APPROVED |
|------|-----|-------------|----------|----------|
| -    | B   | EN-4300u    | 02/02/21 | R.S.     |
| -    | A   | EN-4014     | 10/30/19 | V.V.     |
| -    | -   | EN-3061     | 08/09/16 | J.M.     |

COPYRIGHT 2005 BRASSTECH, INC. THESE DRAWINGS AND THE DESIGNS DEPICTED HEREIN ARE THE PROPRIETARY PROPERTY OF BRASSTECH. ANY USE OR REPRODUCTION IS SUBJECT TO THE EXPRESS APPROVAL OF BRASSTECH. UNAUTHORIZED USE IS STRICTLY PROHIBITED. ALL RIGHTS RESERVED.

| TESTING           | -                                | -           | -       |
|-------------------|----------------------------------|-------------|---------|
| ASSEMBLY          | -                                | -           | -       |
| PLATING           | -                                | -           | -       |
| POLISHING         | -                                | NEXT ASSY   | USED ON |
| MACHINING         | -                                | APPLICATION |         |
| TOOLING FIXTURE # | REMOVE ALL BURRS AND SHARP EDGES |             |         |

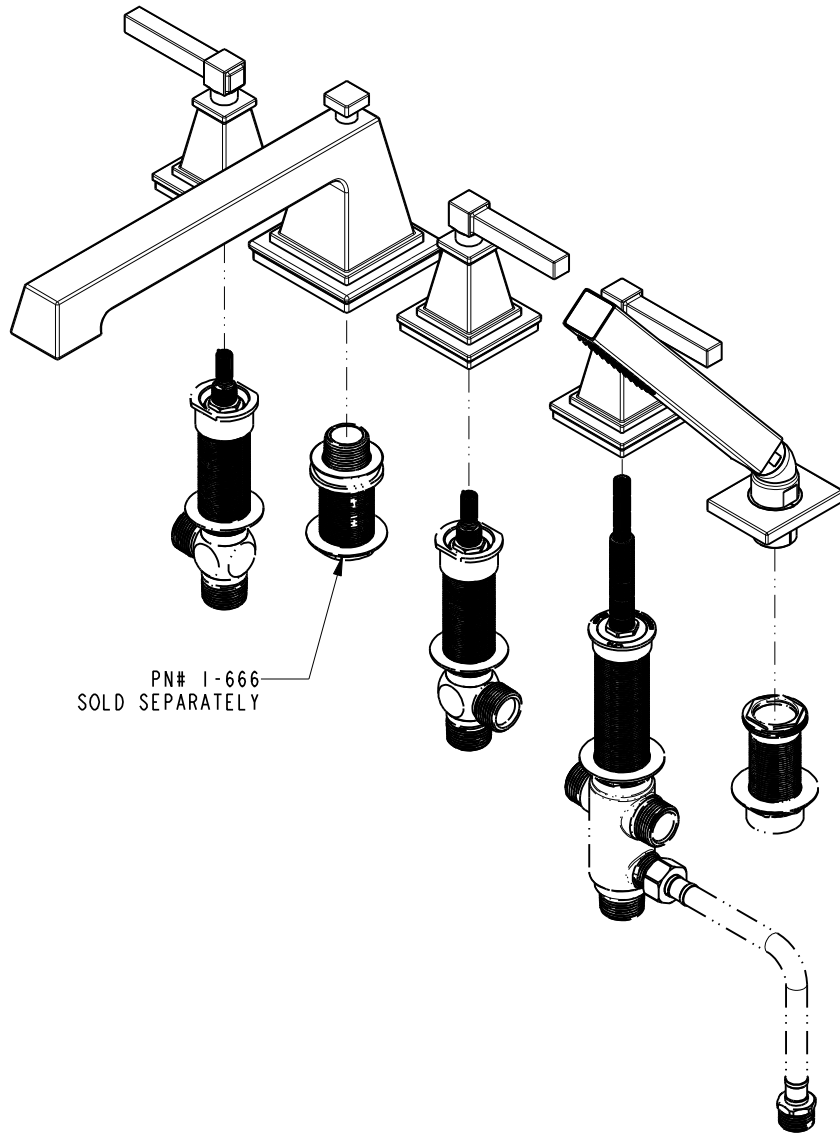
|                              |                 |
|------------------------------|-----------------|
| UNITS ARE: INCHES [MM]       |                 |
| TOLERANCES ARE:              |                 |
| FRACTIONS DECIMALS           | ANGLES          |
| ±1/16"                       | ±1°             |
| .X ±.1 [2,5]                 |                 |
| .XX ±.06 [1,5]               |                 |
| ⓧ.XXX DENOTES CRITICAL DIMS. |                 |
| ALL THREADS ARE CRITICAL     |                 |
| DRAWN                        | JINSON 02/02/21 |
| CHECKED                      | R.S. 02/02/21   |
| APPROVED                     | R.S. 02/02/21   |

**BRASSTECH** INCORPORATED  
 2001 CARNEGIE AVE.  
 SANTA ANA, CA 92705  
 (949) 417-5207

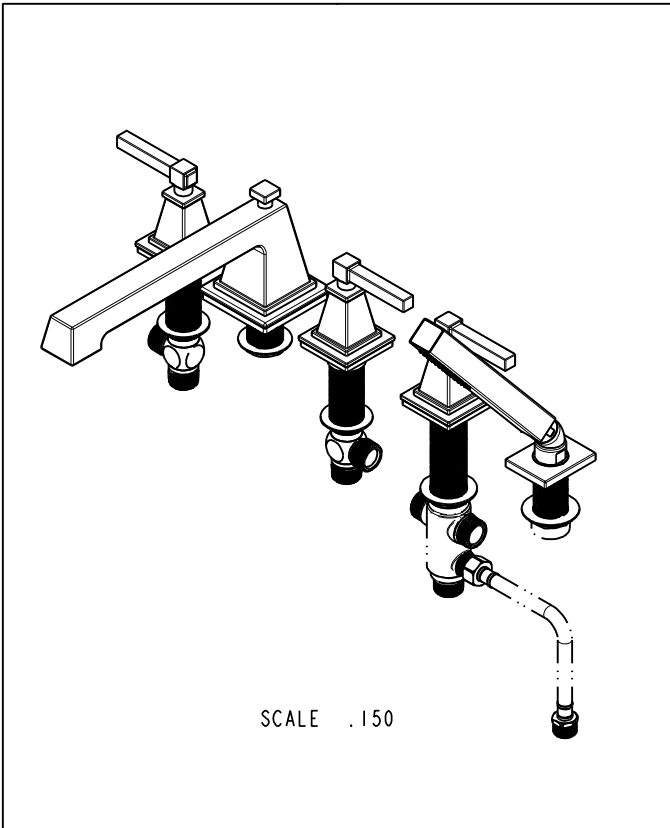
**ROMAN TUB FAUCET W/  
 HANDSHOWER**

DWG NO. **3-3147** REV **B**

SCALE .275 REF. - SHEET | OF 3



PN# 1-666  
SOLD SEPARATELY



SCALE .150

|                          |        |   |  |
|--------------------------|--------|---|--|
| <b>BRASSTECH</b>         |        | 2001 CARNEGIE AVE.<br>SANTA ANA, CA 92705<br>(949) 417-5207 |  |
| INCORPORATED             |        |   |  |
| DWG NO.<br><b>3-3147</b> |        | REV<br><b>B</b>   |  |
| SCALE .225               | REF. - | SHEET 2 OF 3  |  |

