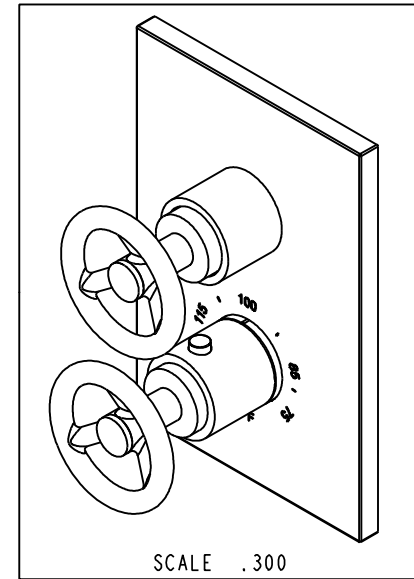
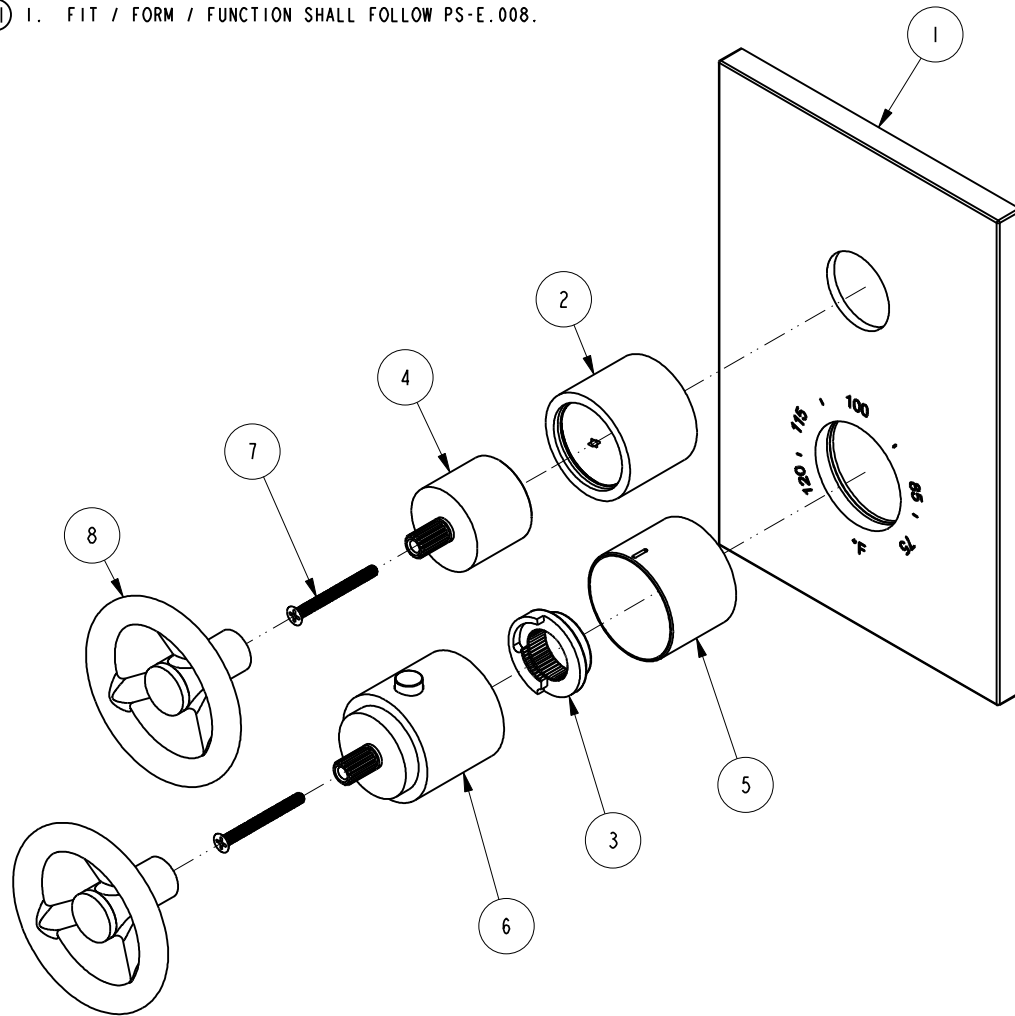


NOTES:

(N1) 1. FIT / FORM / FUNCTION SHALL FOLLOW PS-E.008.

BILL OF MATERIAL (CURRENT LEVEL)

| ITEM | PT/ASSY | DESCRIPTION | TYPE | QTY. |
|------|---------|----------------------------------|----------|------|
| 1 | 2-999 | TUB AND SHOWER PLATE ASM | ASSEMBLY | 1 |
| 2 | 2-996 | THREADED COLLAR ASM | ASSEMBLY | 1 |
| 3 | 91308 | TEMP LIMIT STOP - THERMO | PART | 1 |
| 4 | 12348 | HANDLE BONNET- CONT | PART | 1 |
| 5 | 12345 | SLEEVE - THERMO | PART | 1 |
| 6 | 2-998 | THERMO BONNET ASM | ASSEMBLY | 1 |
| 7 | 92113 | SCRW, M4 X .7 X 40 PHL FLT HD SS | PART | 2 |
| 8 | 20-143 | HANDLE ASM | ASSEMBLY | 2 |



| ZONE | REV | DESCRIPTION | DATE | APPROVED |
|------|-----|-------------|----------|----------|
| - | A | EN-3236 | 01/20/17 | R.S |
| - | - | EN-3005b | 03/21/16 | AN |

COPYRIGHT 2005 BRASSTECH, INC. THESE DRAWINGS AND THE DESIGNS DEPICTED HERE IN ARE THE PROPRIETARY PROPERTY OF BRASSTECH. ANY USE OR REPRODUCTION IS SUBJECT TO THE EXPRESS APPROVAL OF BRASSTECH. UNAUTHORIZED USE IS STRICTLY PROHIBITED. ALL RIGHTS RESERVED.

| TESTING | ASSEMBLY | PLATING | POLISHING | MACHINING | TOOLING FIXTURE # | APPLICATION |
|---------|----------|---------|-----------|-----------|-------------------|----------------------------------|
| - | - | - | - | - | - | REMOVE ALL BURRS AND SHARP EDGES |

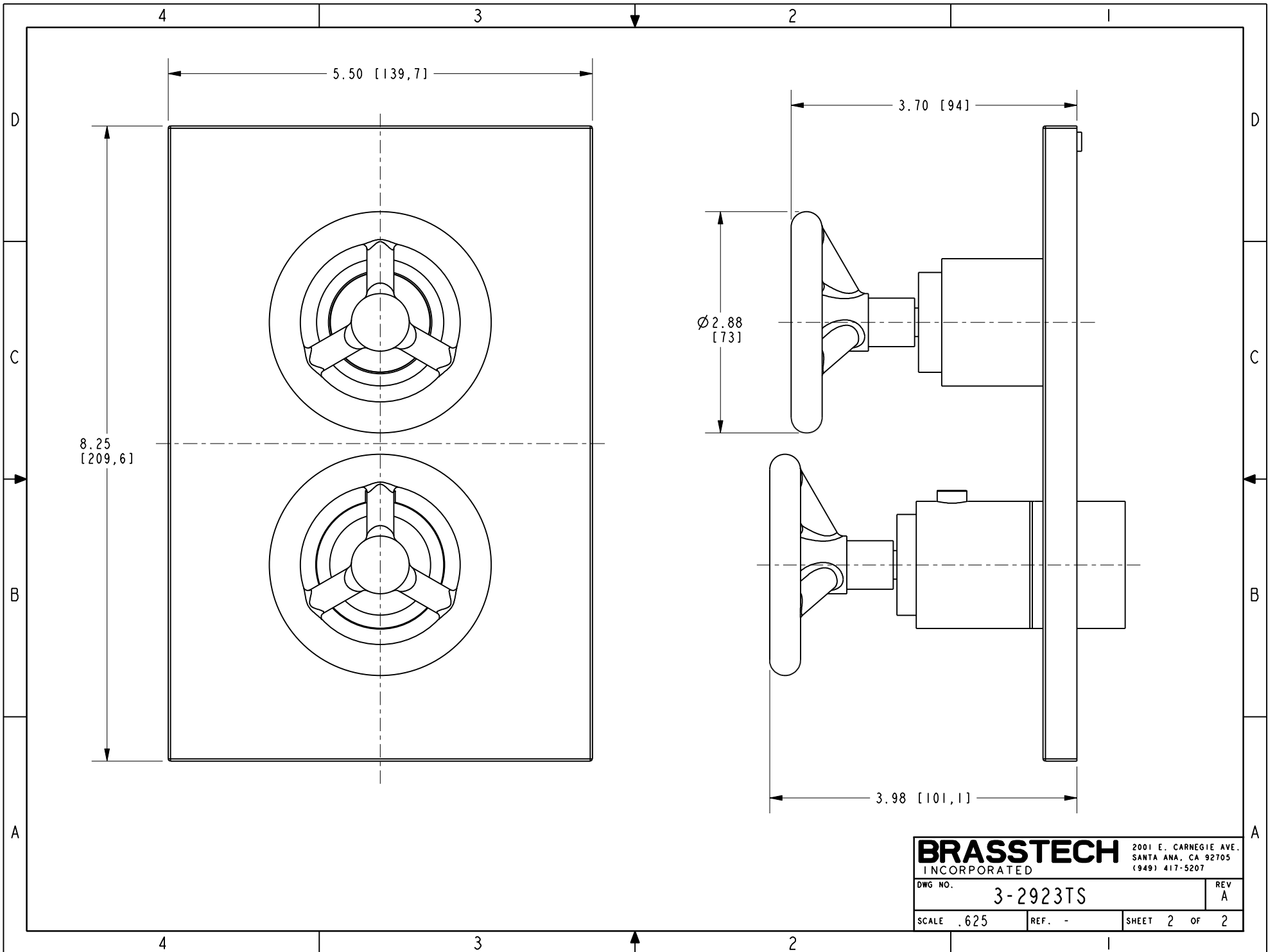
| | |
|---|-------------------|
| UNITS ARE: INCHES [MM] | |
| TOLERANCES ARE: | |
| FRACTIONS | DECIMALS |
| ±1/16" | .X ±.1 [2,5] |
| | .XX ±.06 [1,3] |
| (X.XXX) DENOTES CRITICAL DIMS. ALL THREADS ARE CRITICAL | |
| DRAWN | VINAY 01/20/17 |
| CHECKED | RAVINDRA 01/20/17 |
| APPROVED | R.S 01/20/17 |

BRASSTECH 2001 CARNEGIE AVE. SANTA ANA, CA 92705 (949) 417-5207
INCORPORATED

THERMOSTATIC TRIM

DWG NO. 3-2923TS REV A

SCALE .375 REF. - SHEET 1 OF 2



| | | | |
|------------------|----------|-----------------------|------|
| BRASSTECH | | 2001 E. CARNEGIE AVE. | |
| INCORPORATED | | SANTA ANA, CA 92705 | |
| | | (949) 417-5207 | |
| DWG NO. | 3-2923TS | REV | A |
| SCALE .625 | REF. - | SHEET 2 | OF 2 |