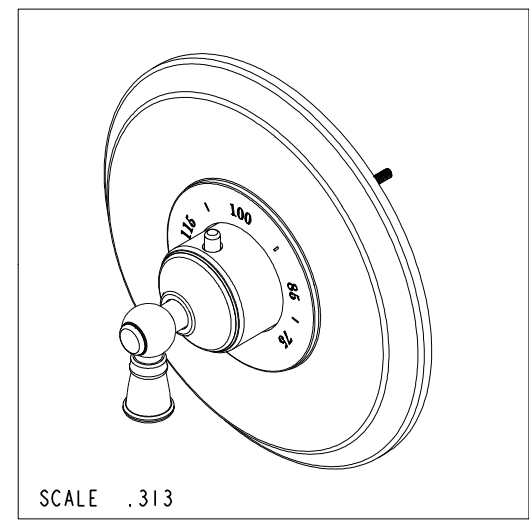
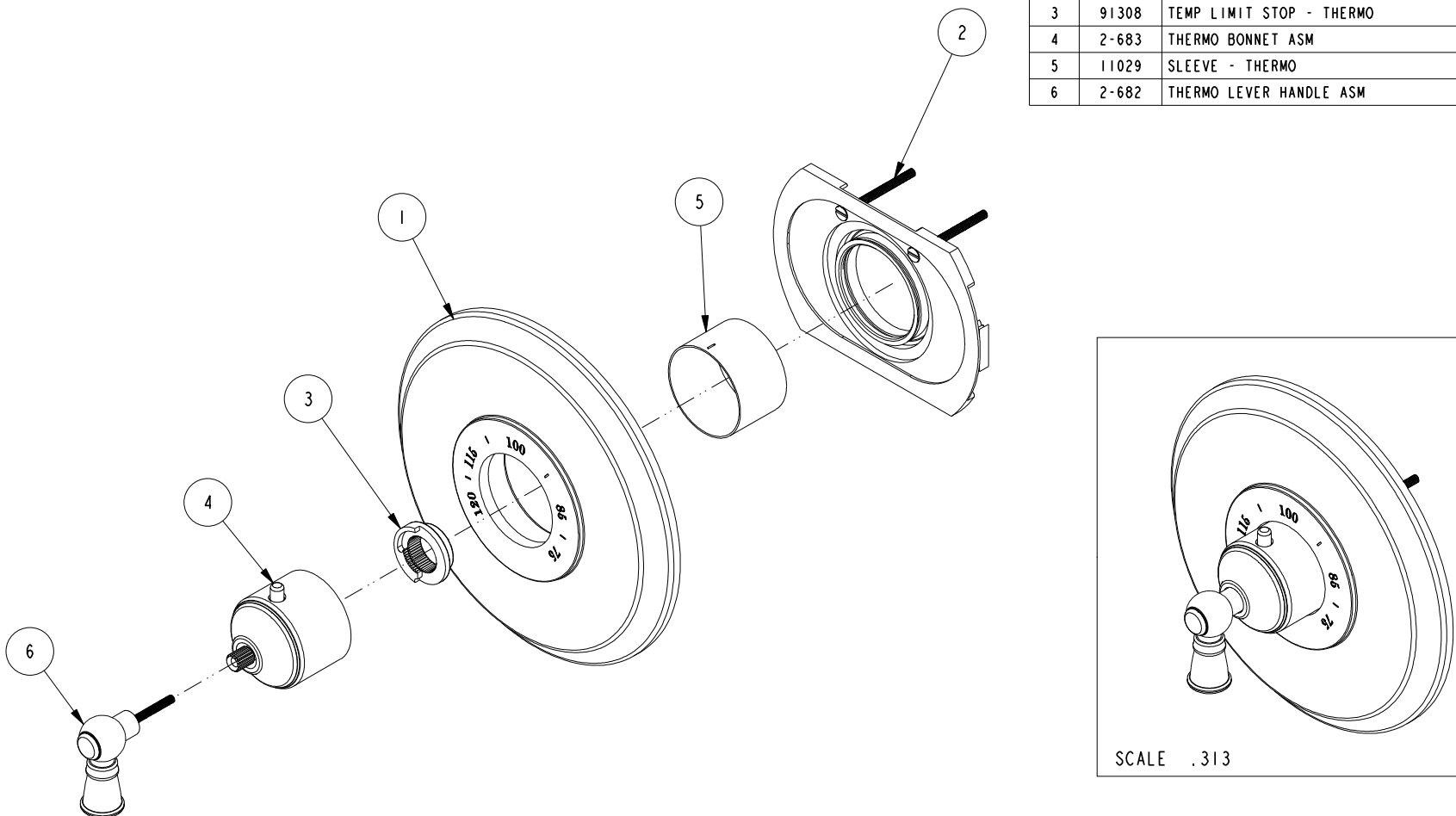


NOTES:

1. TO INSPECT ASSEMBLY, FOLLOW FIRST ARTICLE AND IN PROCESS INSPECTION SHEET.

**BILL OF MATERIAL (CURRENT LEVEL)**

ITEM	PT/ASSY	DESCRIPTION	TYPE	QTY.
1	12119	THERMO PLATE	PART	1
2	1-331	THERMO WALL PLATE ASM	ASSEMBLY	1
3	91308	TEMP LIMIT STOP - THERMO	PART	1
4	2-683	THERMO BONNET ASM	ASSEMBLY	1
5	11029	SLEEVE - THERMO	PART	1
6	2-682	THERMO LEVER HANDLE ASM	ASSEMBLY	1



-	D	EN-3961-2	06/22/20	J.M
-	C	EN-2161e	02/27/15	J.M
-	B	EN-1928	10/11/11	-
-	A	EN-1719	03/30/11	-
-	-	EN-1266	05/05/10	-
ZONE	REV	DESCRIPTION	DATE	APPROVED

COPYRIGHT 2005 BRASSTECH, INC. THESE DRAWINGS AND THE DESIGNS DEPICTED HEREIN ARE THE PROPRIETARY PROPERTY OF BRASSTECH. ANY USE OR REPRODUCTION IS SUBJECT TO THE EXPRESS APPROVAL OF BRASSTECH. UNAUTHORIZED USE IS STRICTLY PROHIBITED. ALL RIGHTS RESERVED.

TESTING	-	-	-
ASSEMBLY	-	-	-
PLATING	-		
POLISHING	-	NEXT ASSY	USED ON
MACHINING	-	APPLICATION	
TOOLING FIXTURE #		REMOVE ALL BURRS AND SHARP EDGES	

UNITS ARE: INCHES [MM]			
TOLERANCES ARE:			
FRACTIONS	DECIMALS	ANGLES	
±1/16"	.X ±.1 [2.5]	±1°	
	.XX ±.06 [1.5]		
(X.XXX) DENOTES CRITICAL DIMS. ALL THREADS ARE CRITICAL			
DRAWN	RAVINDRA	02/27/15	
CHECKED	RK PAI	02/27/15	
APPROVED	JINSON	02/27/15	

<b>BRASSTECH</b>		2001 CARNEGIE AVE. SANTA ANA, CA 92705 (949) 417-5207	
INCORPORATED			
ROUND TRIM PLATE/HANDLE FOR 3/4" THERMO			
DWG NO.		REV	
3-2414TR		D	
SCALE	REF.	SHEET	OF
.313	-	1	3

4

3

2

D

D

C

C

B

B

A

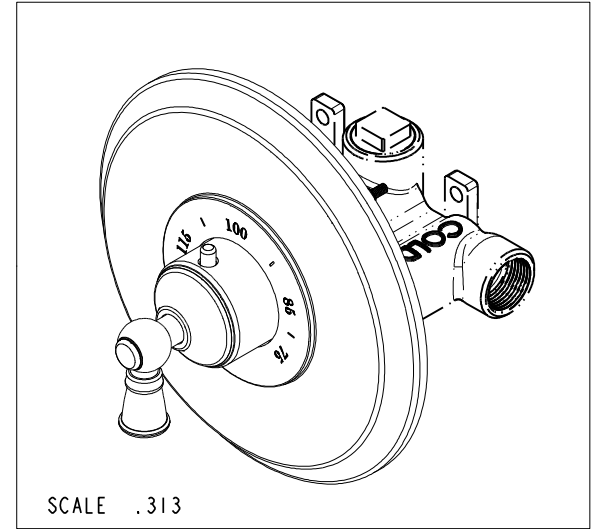
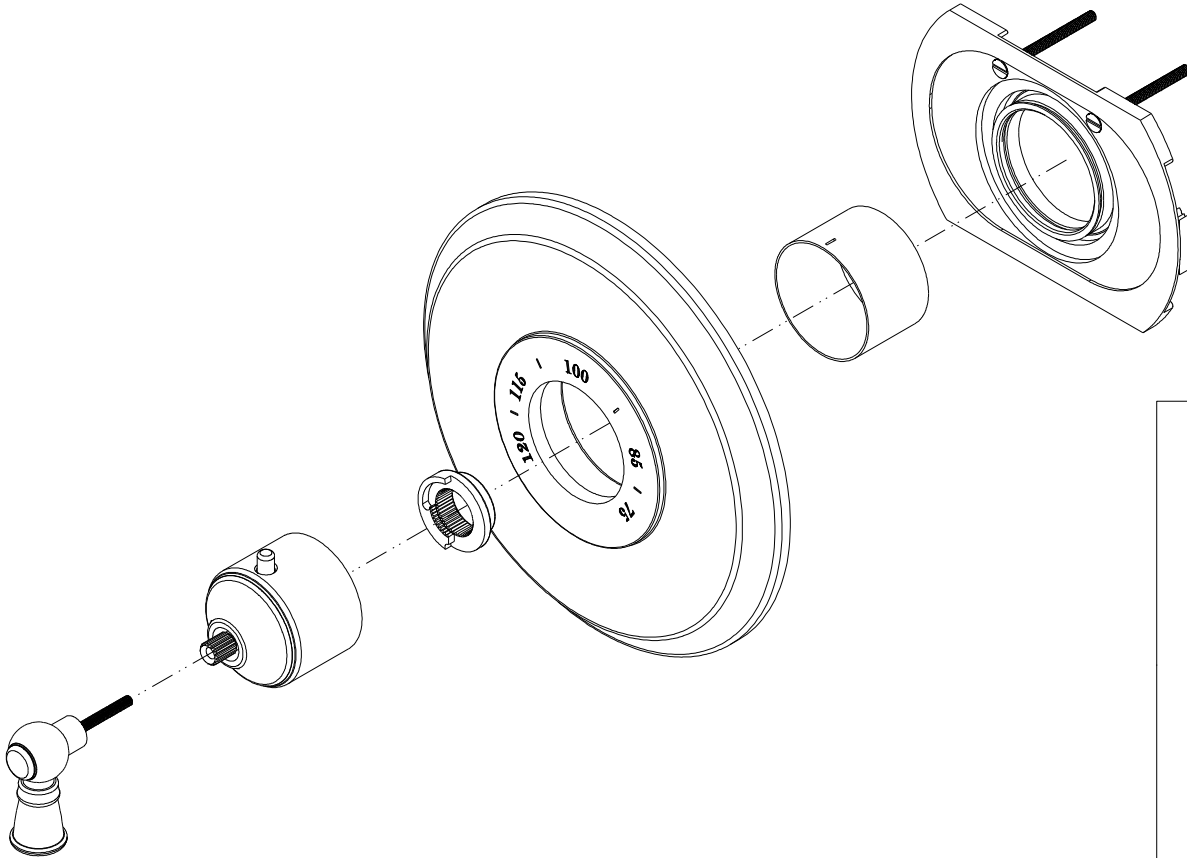
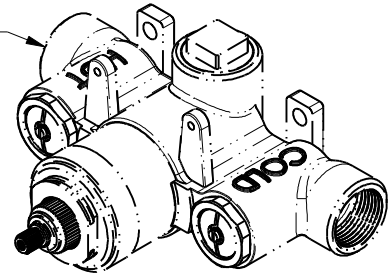
A

4

3

2

PN: 1-540 SOLD SEPARATELY



SCALE .313

**BRASSTECH**

INCORPORATED

2001 CARNEGIE AVE.  
SANTA ANA, CA 92705  
(949) 417-5207

DWG NO.

3-2414TR

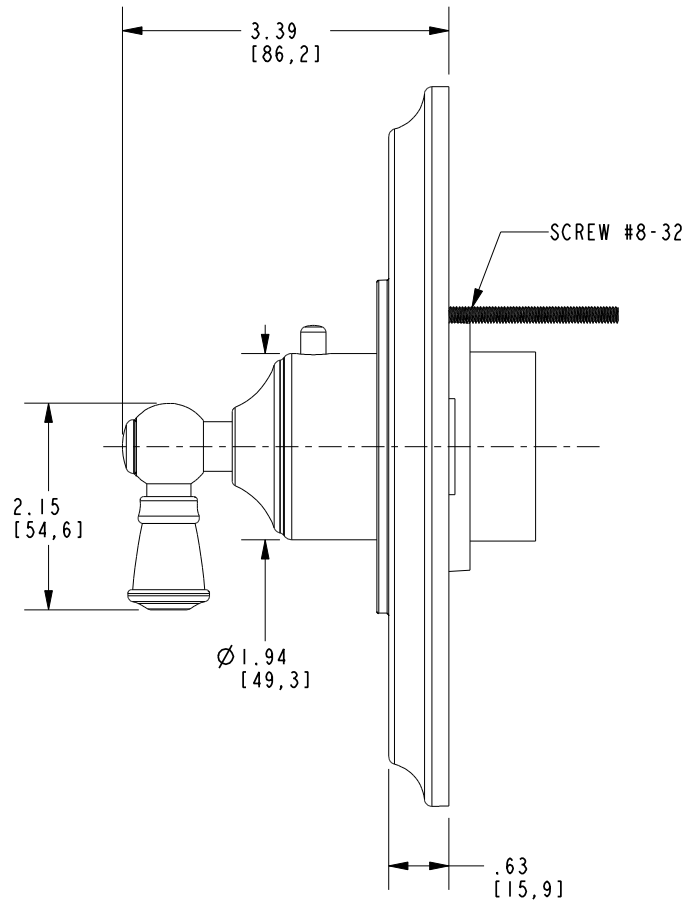
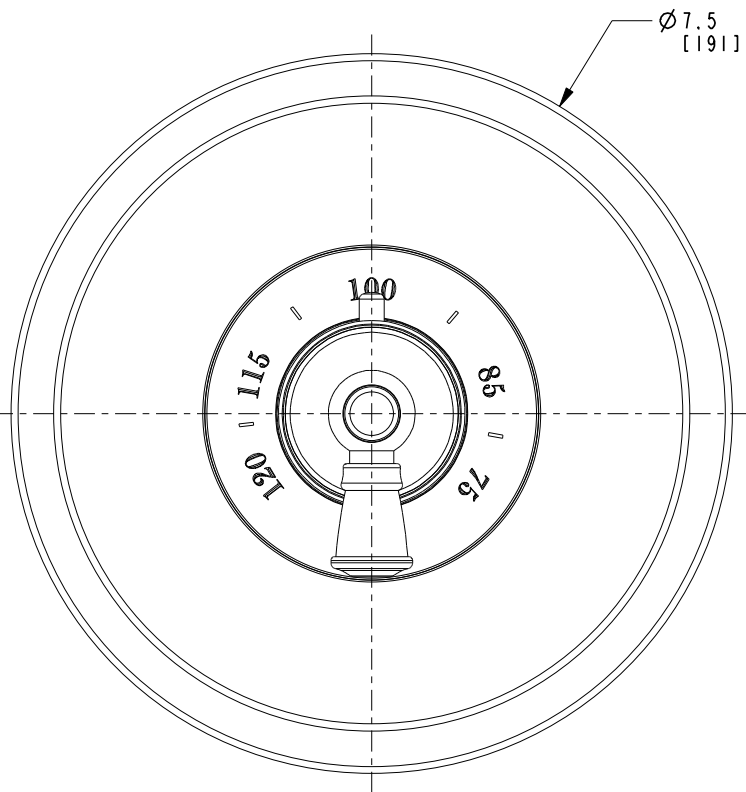
REV

D

SCALE .500

REF. -

SHEET 2 OF 3



<b>BRASSTECH</b>		2001 CARNEGIE AVE. SANTA ANA, CA 92705 (949) 417-5207	
INCORPORATED			
DWG NO.	3-2414TR	REV	D
SCALE	.375	REF.	-
		SHEET	3 OF 3