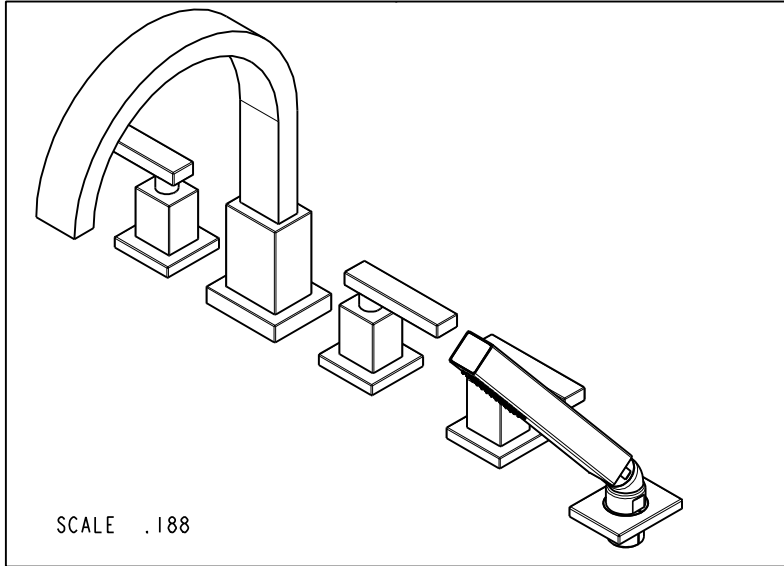
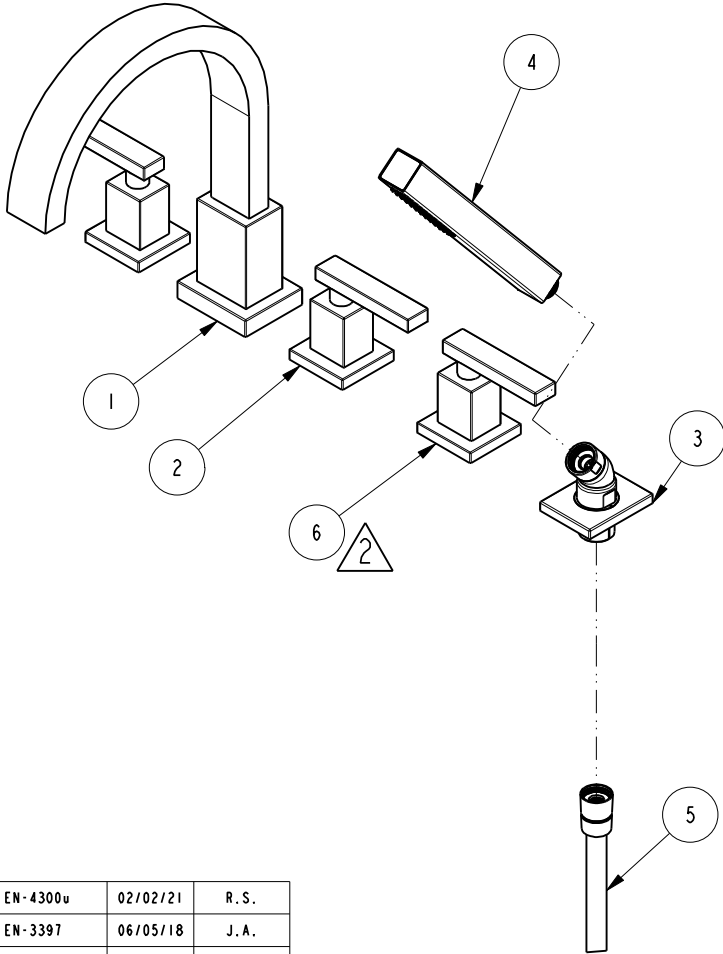


NOTES:

1. TO INSPECT ASSEMBLY, FOLLOW FIRST ARTICLE AND IN PROCESS INSPECTION SHEET.

2 BAG AND LABEL "3-442 DIVERTER HANDLE"



BILL OF MATERIAL (CURRENT LEVEL)				
ITEM	PT/ASSY	DESCRIPTION	TYPE	QTY.
1	3-370	R/T SPOUT ASSEMBLY	ASSEMBLY	1
2	3-368	HANDLE AND ESCUTCHEON ASSEMBLY	ASSEMBLY	2
3	6-289-4	DECK FLANGE TRIM	ASSEMBLY	1
4	283-102	SQUARE WAND HANDSHOWER	ASSEMBLY	1
5	284_RH	59 IN. SPIRAL SHOWER HOSE	ASSEMBLY	1
6	3-442	DIVERTER HANDLE ASM	ASSEMBLY	1

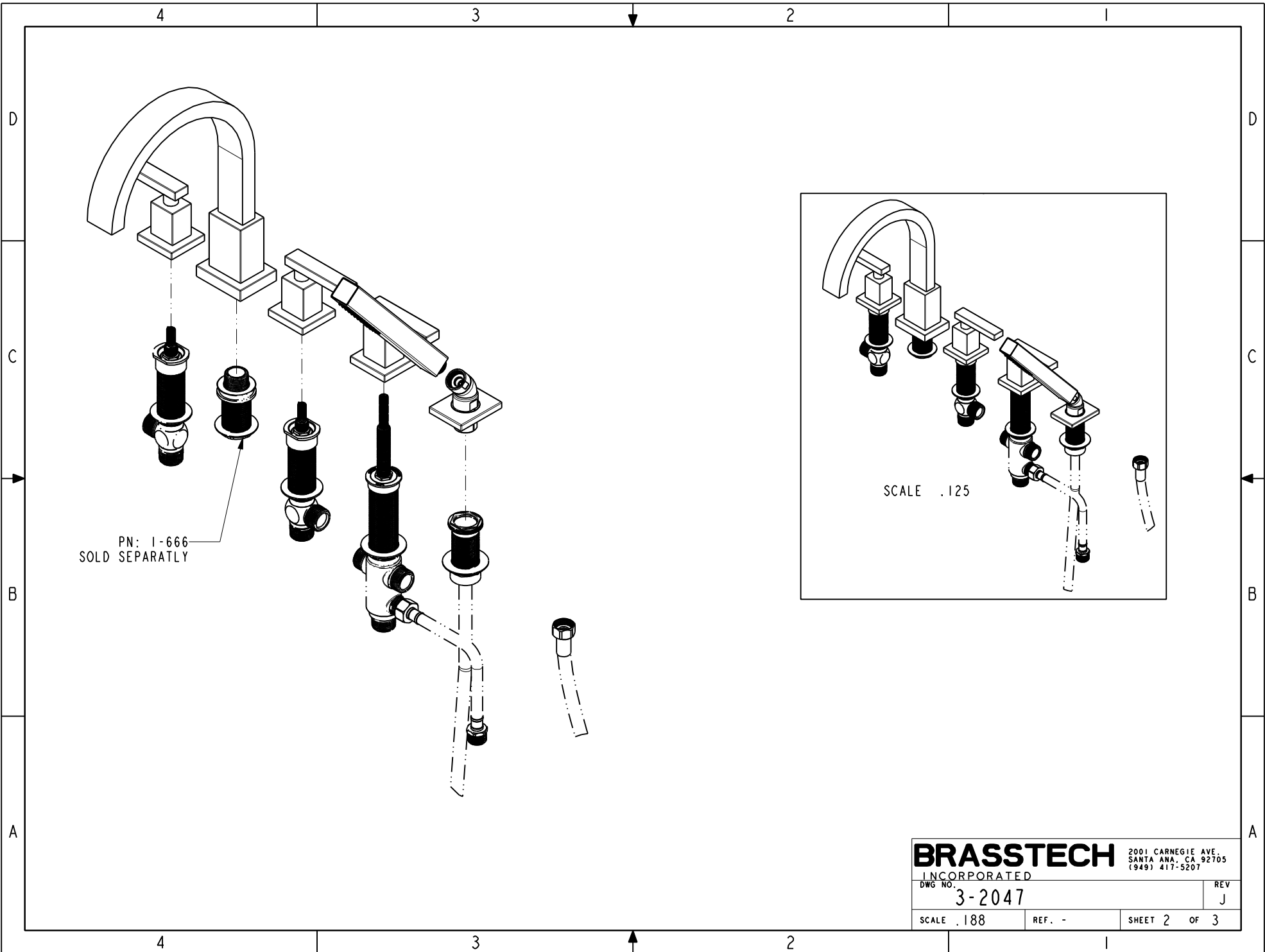
-	J	EN-4300v	02/02/21	R. S.
-	H	EN-3397	06/05/18	J. A.
-	G	EN-2541-1	09/05/14	-
-	F	EN-2032	01/07/14	-
-	E	EN-2188A	12/12/12	-
-	D	EN-2143	04/18/12	-
-	C	EN-2036	01/17/12	-
-	B	EN-1755	05/27/11	-
-	A	EN-1691	01/28/11	-
-	-	EN-1265C	10/30/09	-
ZONE	REV	DESCRIPTION	DATE	APPROVED

COPYRIGHT 2005 BRASSTECH, INC. THESE DRAWINGS AND THE DESIGNS DEPICTED HEREIN ARE THE PROPRIETARY PROPERTY OF BRASSTECH. ANY USE OR REPRODUCTION IS SUBJECT TO THE EXPRESS APPROVAL OF BRASSTECH. UNAUTHORIZED USE IS STRICTLY PROHIBITED. ALL RIGHTS RESERVED.

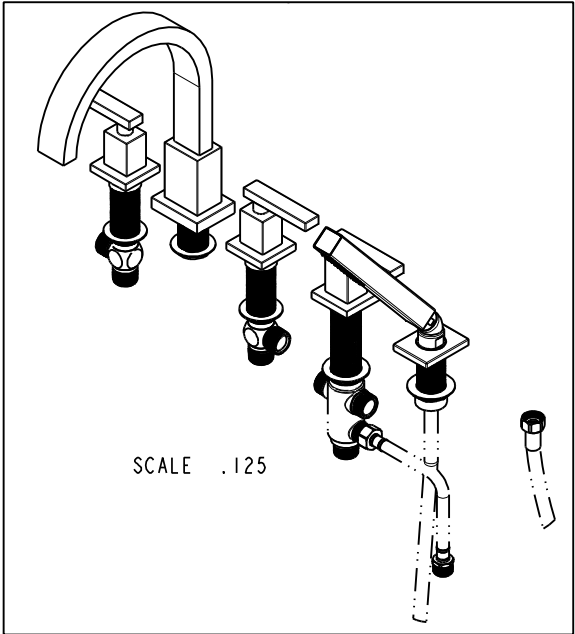
TESTING	-	-	-
ASSEMBLY	-	-	-
PLATING	-	-	-
POLISHING	-	NEXT ASSY	USED ON
MACHINING	-	APPLICATION	
TOOLING FIXTURE #	REMOVE ALL BURRS AND SHARP EDGES		

UNITS ARE: INCHES [MM]	
TOLERANCES ARE:	
FRACTIONS DECIMALS	ANGLES
±1/16"	±1°
.X ±.1 [2,5]	
.XX ±.06 [1,5]	
(X.XXX) DENOTES CRITICAL DIMS.	
ALL THREADS ARE CRITICAL	
DRAWN	JINSON 02/02/21
CHECKED	R.S. 02/02/21
APPROVED	R.S. 02/02/21

<b>BRASSTECH</b>		2001 CARNEGIE AVE. SANTA ANA, CA 92705 (949) 417-5207	
INCORPORATED			
ROMAN TUB SET			
DWG NO. 3-2047		REV J	
SCALE .188	REF. -	SHEET 1 OF 3	



PN: 1-666  
SOLD SEPARATLY



<b>BRASSTECH</b>		2001 CARNEGIE AVE. SANTA ANA, CA 92705 (949) 417-5207	
INCORPORATED			
DWG NO. 3-2047		REV J	
SCALE .188	REF. -	SHEET 2 OF 3	

