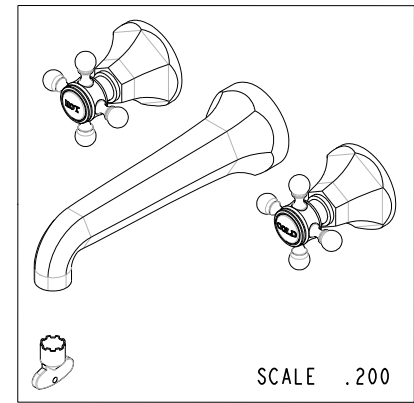
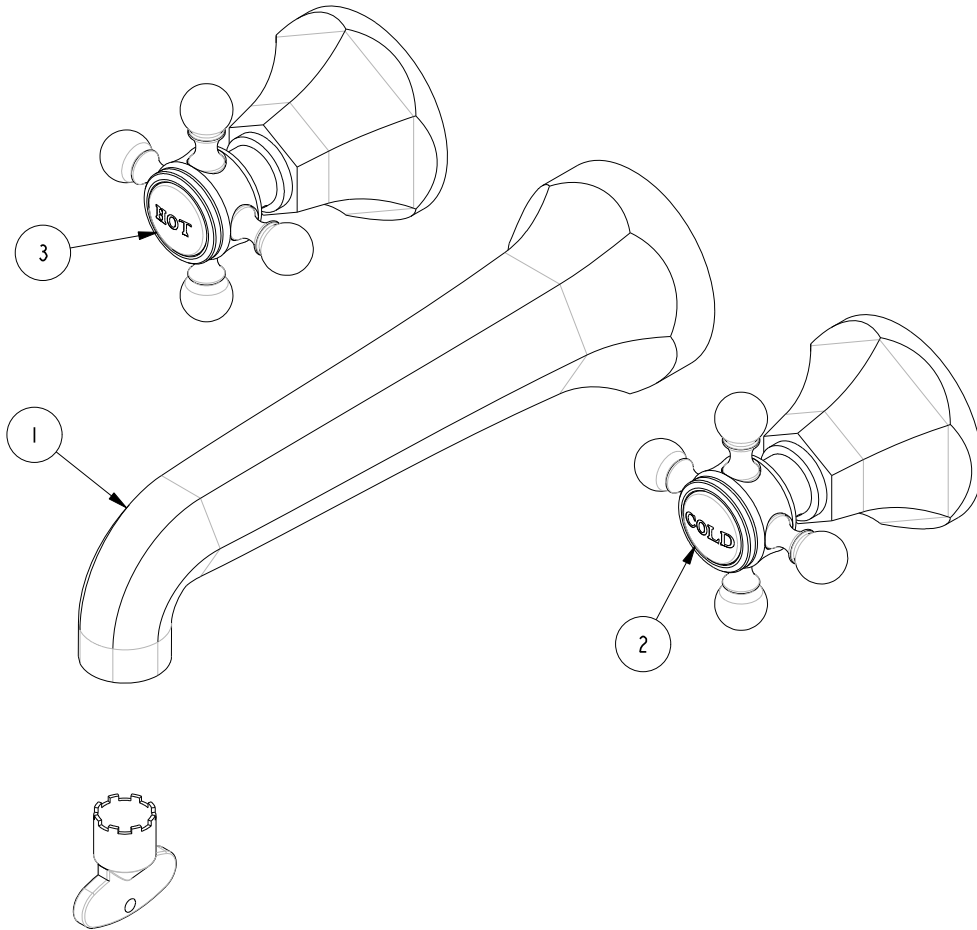


NOTES:

(NI) 1. FIT / FORM / FUNCTION SHALL FOLLOW PS-E.008.

**BILL OF MATERIAL (CURRENT LEVEL)**

ITEM	PT/ASSY	DESCRIPTION	TYPE	QTY.
1	3-626	WALL LAVATORY SPOUT ASM	ASSEMBLY	1
2	3-595C	HANDLE/ESC ASM, COLD	ASSEMBLY	1
3	3-595H	HANDLE/ESC ASM, HOT	ASSEMBLY	1



ZONE	REV	DESCRIPTION	DATE	APPROVED
-	-	EN-3512	06/07/18	JM

COPYRIGHT 2005 BRASSTECH, INC. THESE DRAWINGS AND THE DESIGNS DEPICTED HEREIN ARE THE PROPRIETARY PROPERTY OF BRASSTECH. ANY USE OR REPRODUCTION IS SUBJECT TO THE EXPRESS APPROVAL OF BRASSTECH. UNAUTHORIZED USE IS STRICTLY PROHIBITED. ALL RIGHTS RESERVED.

TESTING	-	-	-
ASSEMBLY	-	-	-
PLATING	-	-	-
POLISHING	-	NEXT ASSY	USED ON
MACHINING	-	APPLICATION	
TOOLING FIXTURE #	REMOVE ALL BURRS AND SHARP EDGES		

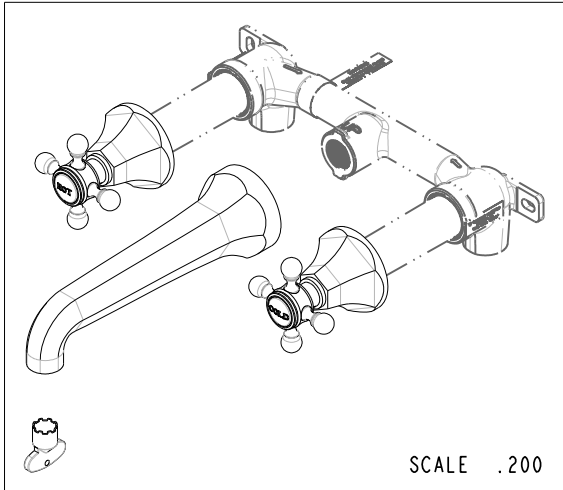
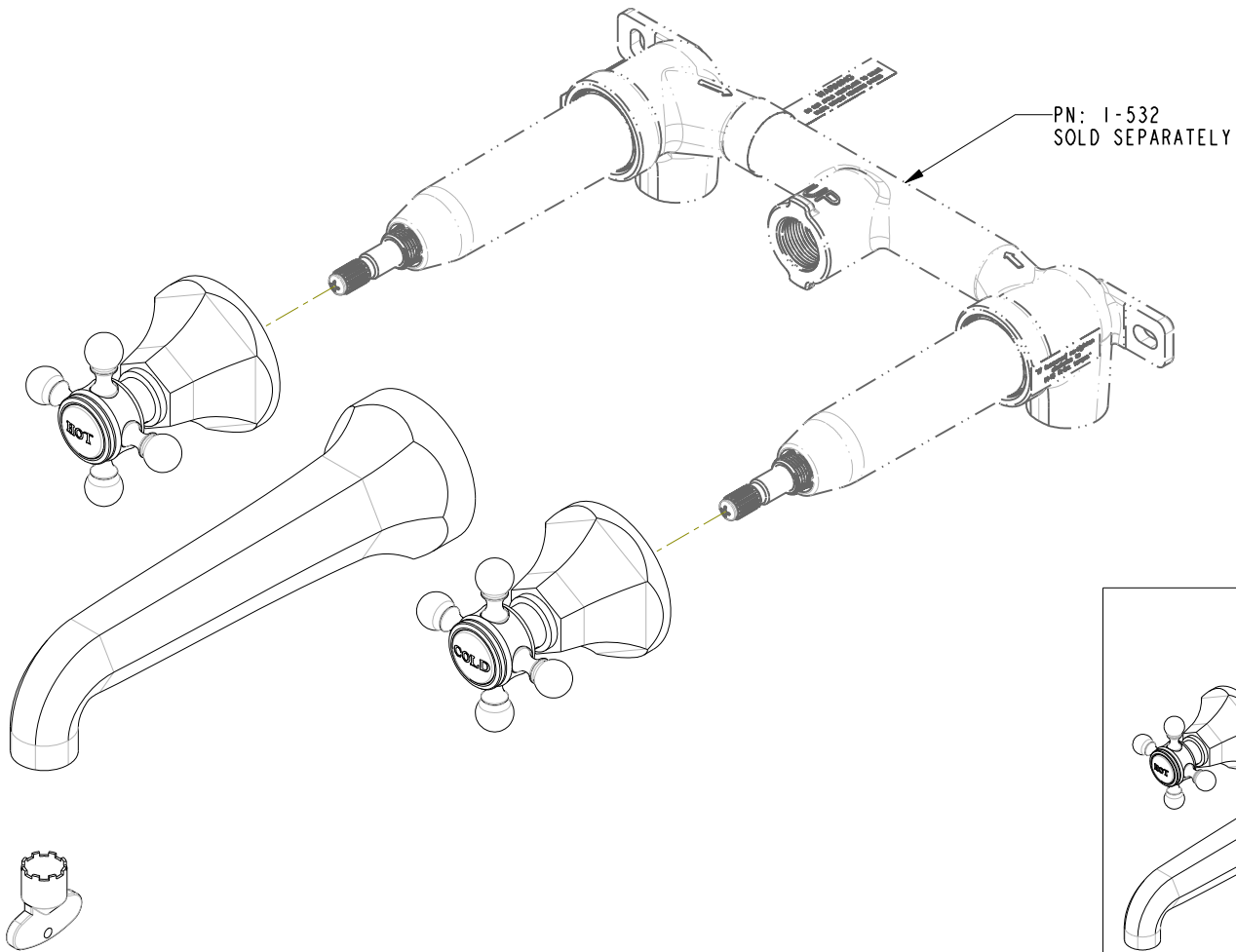
UNITS ARE: INCHES [MM]			
TOLERANCES ARE:			
FRACTIONS	DECIMALS	ANGLES	
±1/16"	.X ±.1 [2,5]	±1°	
	.XX ±.06 [1,5]		
(X.XXX) DENOTES CRITICAL DIMS.			
ALL THREADS ARE CRITICAL			
DRAWN	JINSON	05/17/18	
CHECKED	J.M.	05/17/18	
APPROVED	J.M.	05/17/18	

**BRASSTECH** 2001 CARNEGIE AVE. SANTA ANA, CA 92705 (949) 417-5207  
INCORPORATED

**WALL MOUNT LAV FAUCET**

DWG NO. **3-1221** REV -

SCALE .500 REF. - SHEET 1 OF 3

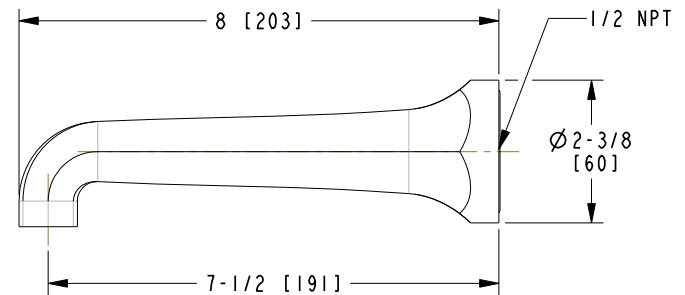
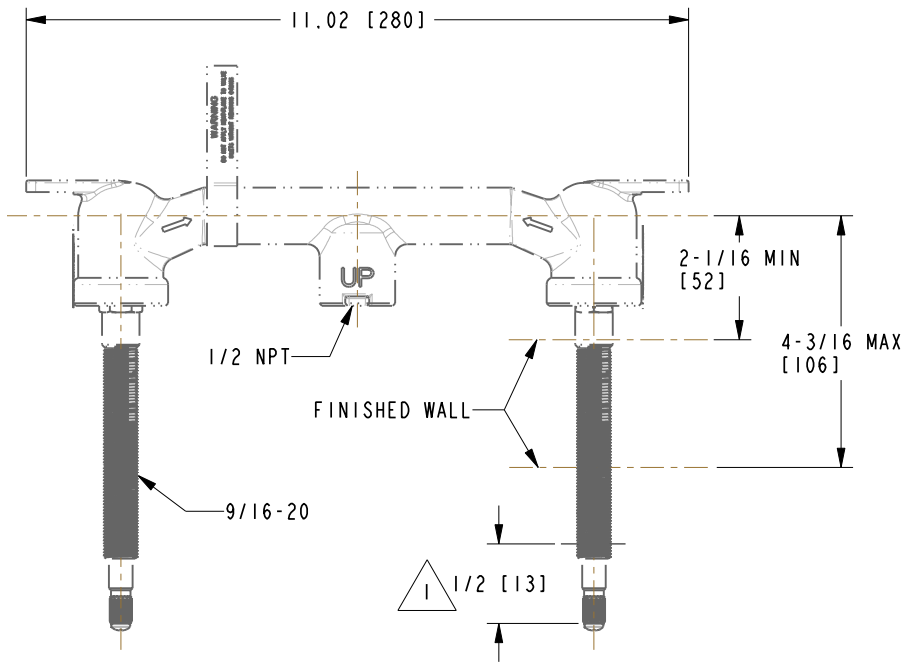


SCALE .200

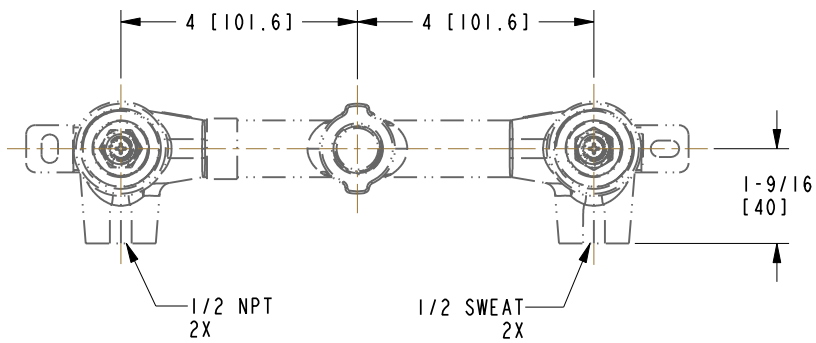
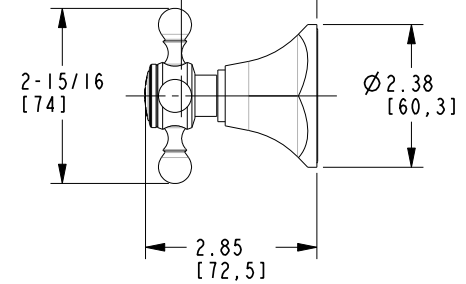
<b>BRASSTECH</b>		2001 E. CARNEGIE AVE.	
INCORPORATED		SANTA ANA, CA 92705	
		(949) 417-5207	
DWG NO.	3-1221	REV	-
SCALE	.375	REF.	-
		SHEET	2 OF 3

NOTES:

1. CUT ALL-THREAD 1/2" SHORTER THAN STEM.



2-1/4 [57]  
AMOUNT OF STEM  
REQ. FROM FINISHED WALL



**BRASSTECH** 2001 E. CARNEGIE AVE.  
INCORPORATED SANTA ANA, CA 92705  
(949) 417-5207

DWG NO.	3-1221	REV	-
SCALE	.313	REF.	-
SHEET 3		OF 3	