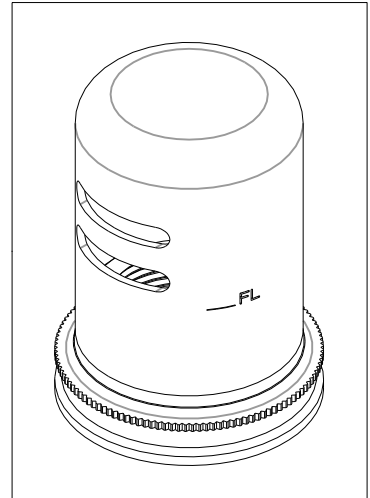
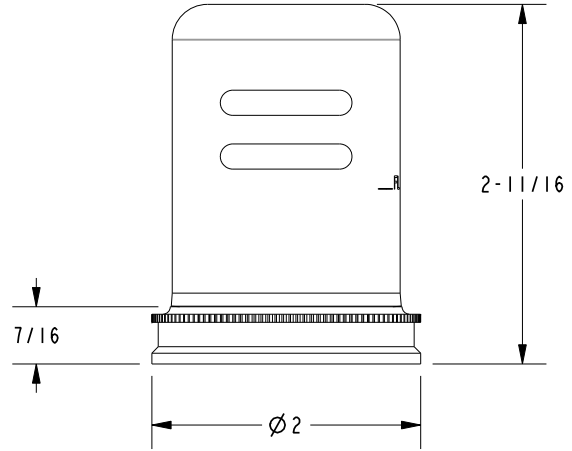
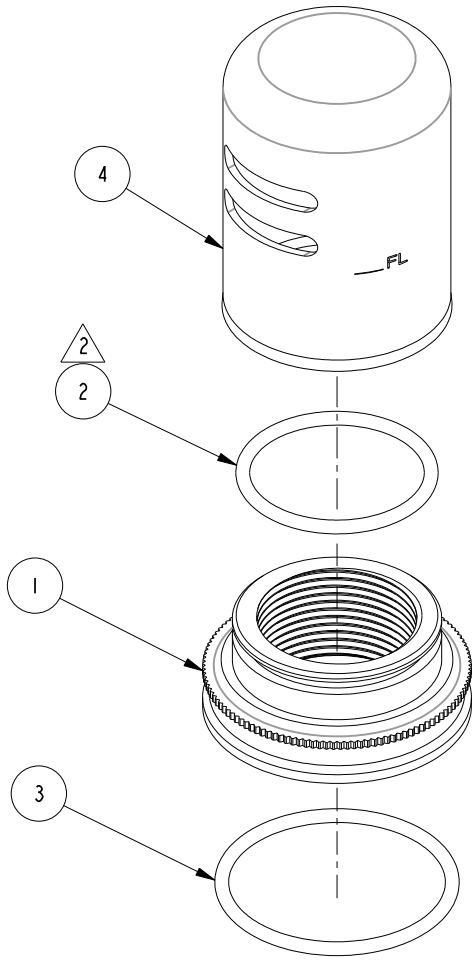


NOTES:

- (N1) 1. FIT / FORM / FUNCTION SHALL FOLLOW PS-E.008.
- 2. APPLY THIN FILM OF DOWN CORNING 111.

BILL OF MATERIAL (CURRENT LEVEL)				
ITEM	PT/ASSY	DESCRIPTION	TYPE	QTY.
1	12213	ESCUTCHEON	PART	1
2	91227	O-RING, #2-125, EPDM, 65-75 DURO	PART	1
3	<del>91362</del>	O-RING, #2-130, EPDM, 65-75 DURO	PART	1
4	50688	AIR GAP CAP	PART	1

91768



REV B EN-3722 02/08/2019 CG

ZONE	REV	DESCRIPTION	DATE	APPROVED
-	A	EN-3293	3/31/17	J.A.
-	-	EN-3270	02/22/17	V.V.

COPYRIGHT 2005 BRASSTECH, INC. THESE DRAWINGS AND THE DESIGNS DEPICTED HEREIN ARE THE PROPRIETARY PROPERTY OF BRASSTECH. ANY USE OR REPRODUCTION IS SUBJECT TO THE EXPRESS APPROVAL OF BRASSTECH. UNAUTHORIZED USE IS STRICTLY PROHIBITED. ALL RIGHTS RESERVED.

TESTING	-	-	-
ASSEMBLY	-	-	-
PLATING	-	-	2940-5711
POLISHING	-	NEXT ASSY	USED ON
MACHINING	-	APPLICATION	
TOOLING	FIXTURE #	REMOVE ALL BURRS AND SHARP EDGES	

UNITS ARE: INCHES [MM]			
TOLERANCES ARE:			
FRACTIONS	DECIMALS	ANGLES	
±1/16"		±1°	
	.X ±.1 [2.5]		
	.XX ±.06 [1.5]		
(X.XXX) DENOTES CRITICAL DIMS.			
ALL THREADS ARE CRITICAL			
DRAWN	H. LE	02/22/17	
CHECKED	V. VU	02/22/17	
APPROVED	V. VU	02/22/17	

**BRASSTECH** 2001 CARNEGIE AVE.  
INCORPORATED SANTA ANA, CA 92705  
(949) 417-5207

AIR CAP ASM

DWG NO. 2940-5751

SCALE .700 REF. - SHEET | OF **B**