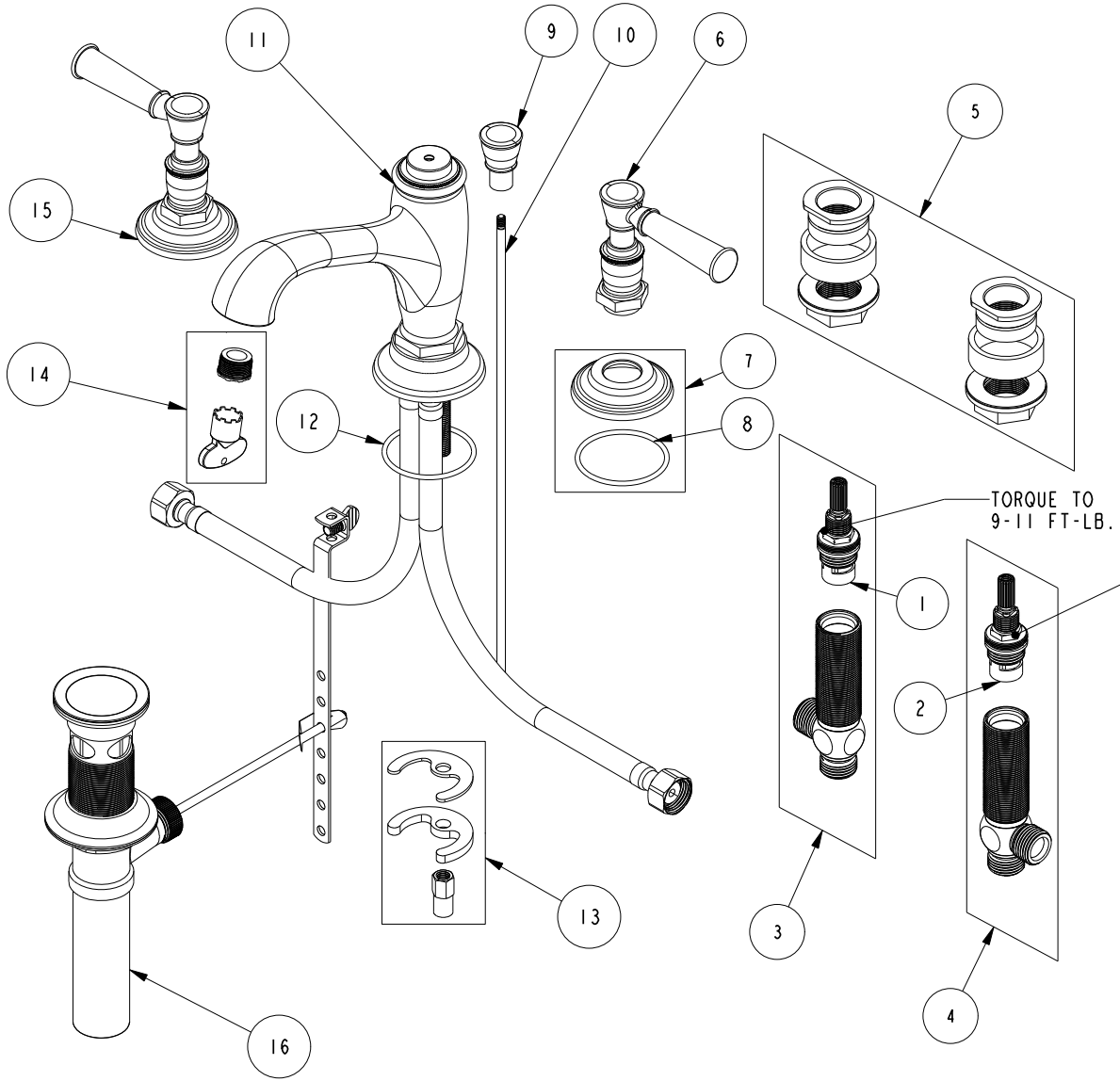


REPLACEMENT PARTS



ITEM	PT/ASSY	SPECIFY FINISH	DESCRIPTION
1	1-001		W/S CARTRIDGE - COLD
2	1-002		W/S CARTRIDGE - HOT
3	1-526		W/S CART/BODY ASM (COLD)
4	1-527		W/S CART/BODY ASM (HOT)
5	1-226		WIDESPREAD MOUNTING HARDWARE
6	20-115	YES	LEVER HANDLE ASM
7	20-130	YES	ESCUTCHEON ASM
8	91756		O-RING #2-134, EP, 50 DURO - GREY
9	12372	YES	BONNET
10	10288	YES	3/16" POP UP ROD
11	20-114	YES	W/S SPOUT ASM
12	91756		O-RING #2-134, EP, 50 DURO - GREY
13	1-491		SPOUT MOUNTING KIT
14	1-492		AERATOR 1.2 GPM WITH KEY
15	3-561	YES	LEVER HANDLE W/ESC.
16	325	YES	POP UP ASSEMBLY

W/S LAVATORY ASSEMBLY
2910

REV D EN-4734 11/08/23 APPROVED R.S.

NEWPORT BRASS.

t: 949.417.5207 | www.newportbrass.com