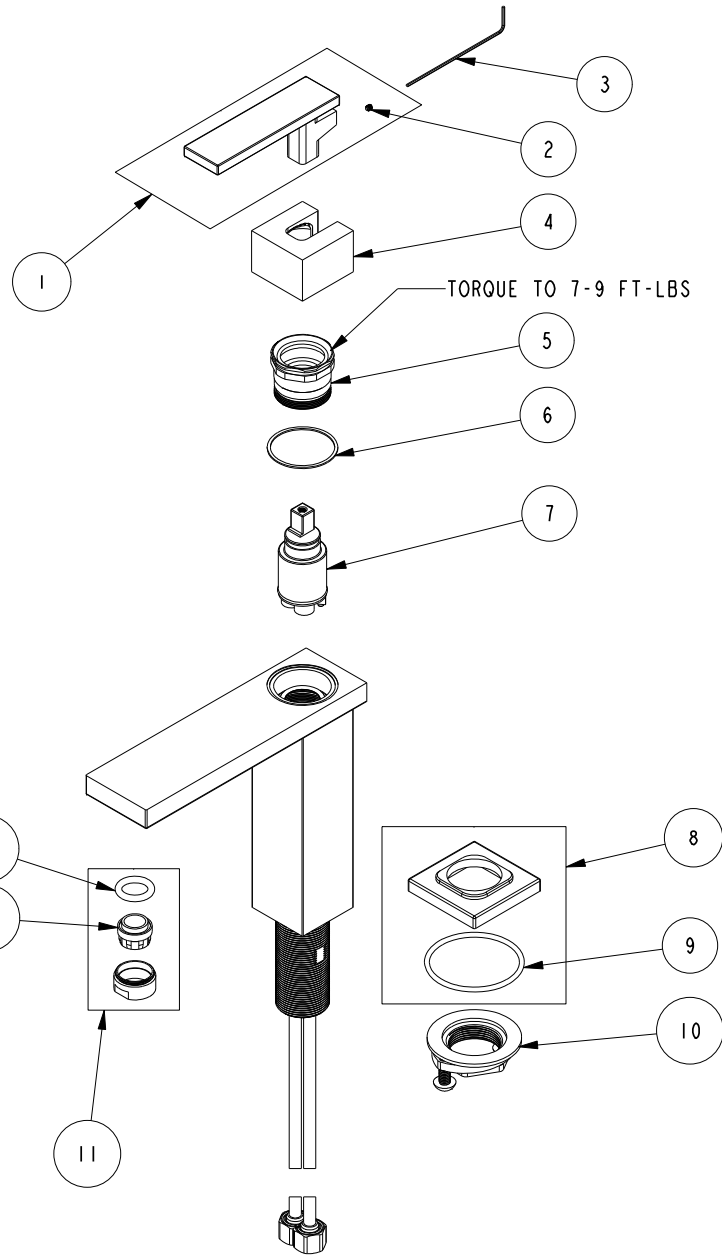


REPLACEMENT PARTS



ITEM	PT/ASSY	SPECIFY FINISH	DESCRIPTION
1	2-921	YES	HANDLE ASSEMBLY
2	92834		SCRW, 4-40 X 1/8 SKT HD CUP PT SS
3	92872		HEX KEY, 0.05" ALLOY STEEL
4	2-920	YES	CAP ASSEMBLY
5	1-296		RETAINER NUT ASSEMBLY
6	91633		WSHR, 1.34 ID X 1.5 OD X .032 THK, FLT, NYLON
7	1-259		MIXING VALVE - FX25
8	2-919	YES	ESCUTHEON ASSEMBLY
9	91756		O-RING #2-134, EP, 50 DURO - GREY
10	1-393		1-1/8 18 UNEF MOUNTING KIT
11	20-372	YES	AERATOR ASM, 1.2 GPM
12	12403		AERATOR INSERT, Jr. SIZE, 1.2 GPM
13	91103		O-RING, #2-207, EPDM, 65-75 DURO
14	330	YES	DRAIN, PUSH DOWN, W/ OVERFLOW

SKYLAR - SINGLE HOLE FAUCET
2563

REV N EN-4735 01/09/24 APPROVED R.S.

NEWPORT BRASS.

t: 949.417.5207 | www.newportbrass.com