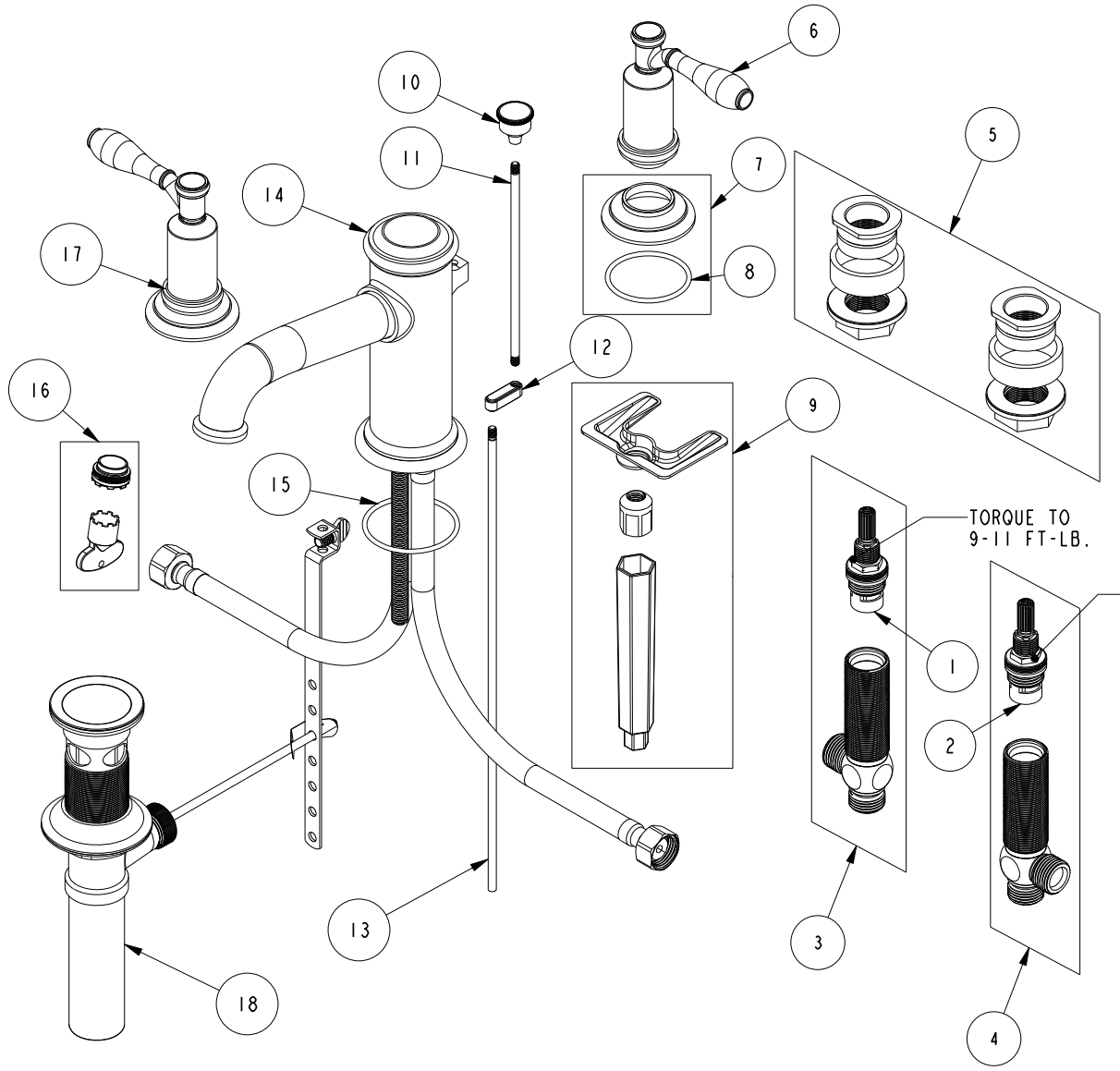


# REPLACEMENT PARTS



ITEM	PT/ASSY	SPECIFY FINISH	DESCRIPTION
1	1-001		W/S CARTRIDGE - COLD
2	1-002		W/S CARTRIDGE - HOT
3	1-526		W/S CART/BODY ASM (COLD)
4	1-527		W/S CART/BODY ASM (HOT)
5	1-226		WIDESPREAD MOUNTING HARDWARE
6	20-711	YES	LEVER HANDLE ASM
7	20-712	YES	ESCUTCHEON ASM
8	91762		O-RING, #2-132, EP, 50 DURO - GREY
9	1-494		SPOUT MOUNTING KIT
10	80158	YES	POP UP ROD KNOB
11	11341	YES	3/16" POP UP ROD
12	80166	YES	POP UP ROD LINK
13	10288	YES	3/16" POP UP ROD
14	8-061	YES	LAVATORY SPOUT
15	91753		O-RING, # 2-136, EP, 50 DURO - GREY
16	1-516		AERATOR WITH KEY
17	3-593	YES	FLOW CONTROL HANDLE
18	325	YES	POP UP ASSEMBLY
19	91814		PLUG
20	91022		O-RING, #2- 018, EPDM, 65-75 DURO, NSF 61
21	91815		O-RING, 1 X 10MM ID, EPDM, 65-75 DURO

W/S LAVATORY FAUCET  
2550

REV F EN-4734 11/08/23 APPROVED R.S.

**NEWPORT BRASS.**

t: 949.417.5207 | www.newportbrass.com