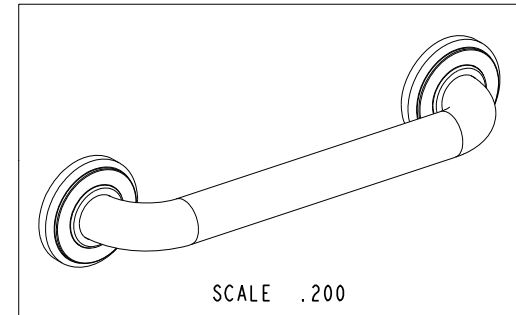
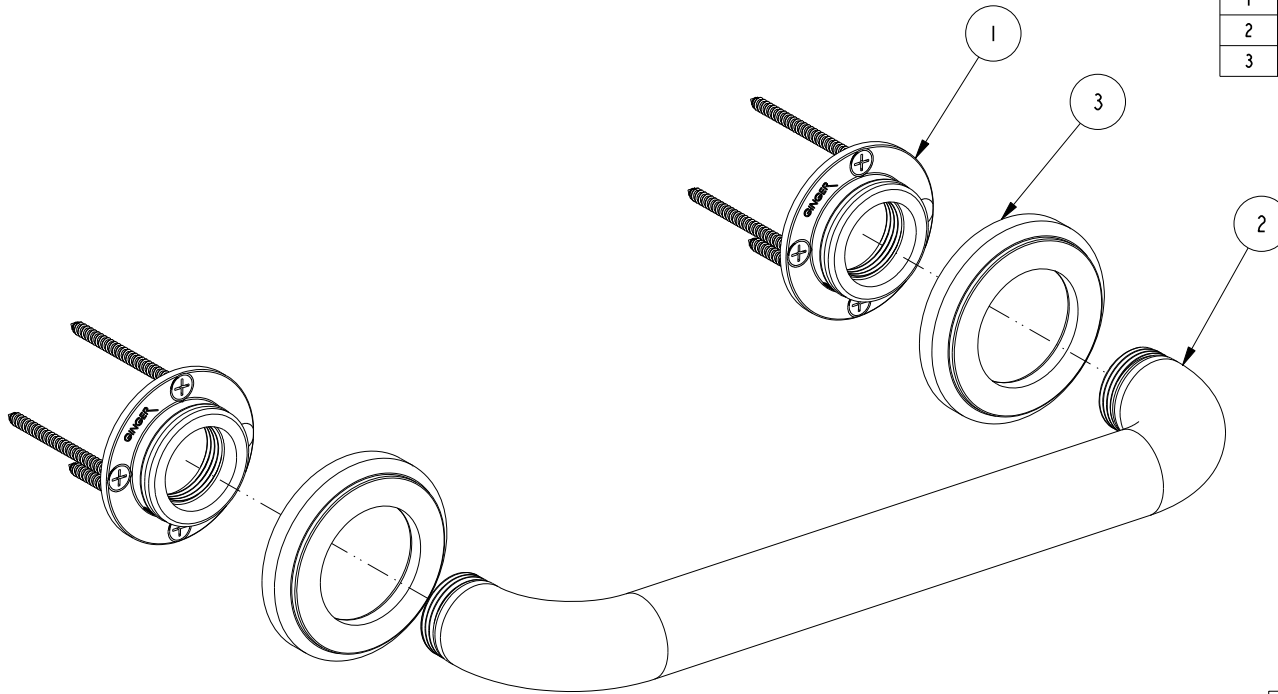


NOTES:

(N1) 1. FIT / FORM / FUNCTION SHALL FOLLOW PS-E.008.

BILL OF MATERIAL (CURRENT LEVEL)

ITEM	PT/ASSY	DESCRIPTION	TYPE	QTY.
1	20-287	GRAB BAR MOUNTING HARDWARE PACK	ASSEMBLY	2
2	5080	GRAB BAR AND ADAPTER ASSY	ASSEMBLY	1
3	40682	ROUND TRIM RING	PART	2



COPYRIGHT 2005 BRASSTECH, INC.
 THESE DRAWINGS AND THE DESIGNS
 DEPICTED HEREIN ARE THE PROPRIETARY
 PROPERTY OF BRASSTECH. ANY USE
 OR REPRODUCTION IS SUBJECT TO
 THE EXPRESS APPROVAL OF BRASSTECH.
 UNAUTHORIZED USE IS STRICTLY
 PROHIBITED. ALL RIGHTS RESERVED.

TESTING	-	-	-	UNITS ARE: INCHES [MM]	-	-
ASSEMBLY	-	-	-	TOLERANCES ARE:	-	-
PLATING	-	-	-	FRACTIONS DECIMALS ANGLES	-	-
POLISHING	-	-	-	±1/16" .X ±.1 [2.5] ±1°	-	-
MACHINING	-	NEXT ASSY	USED ON	.XX ±.06 [1.5]	-	-
TOOLING FIXTURE #	APPLICATION			(X.XXX) DENOTES CRITICAL DIMS.	-	-
	REMOVE ALL BURRS AND SHARP EDGES			ALL THREADS ARE CRITICAL	-	-
				DRAWN	R.S.	06/28/17
				CHECKED	J.M.	06/28/17
				APPROVED	J.M.	06/28/17

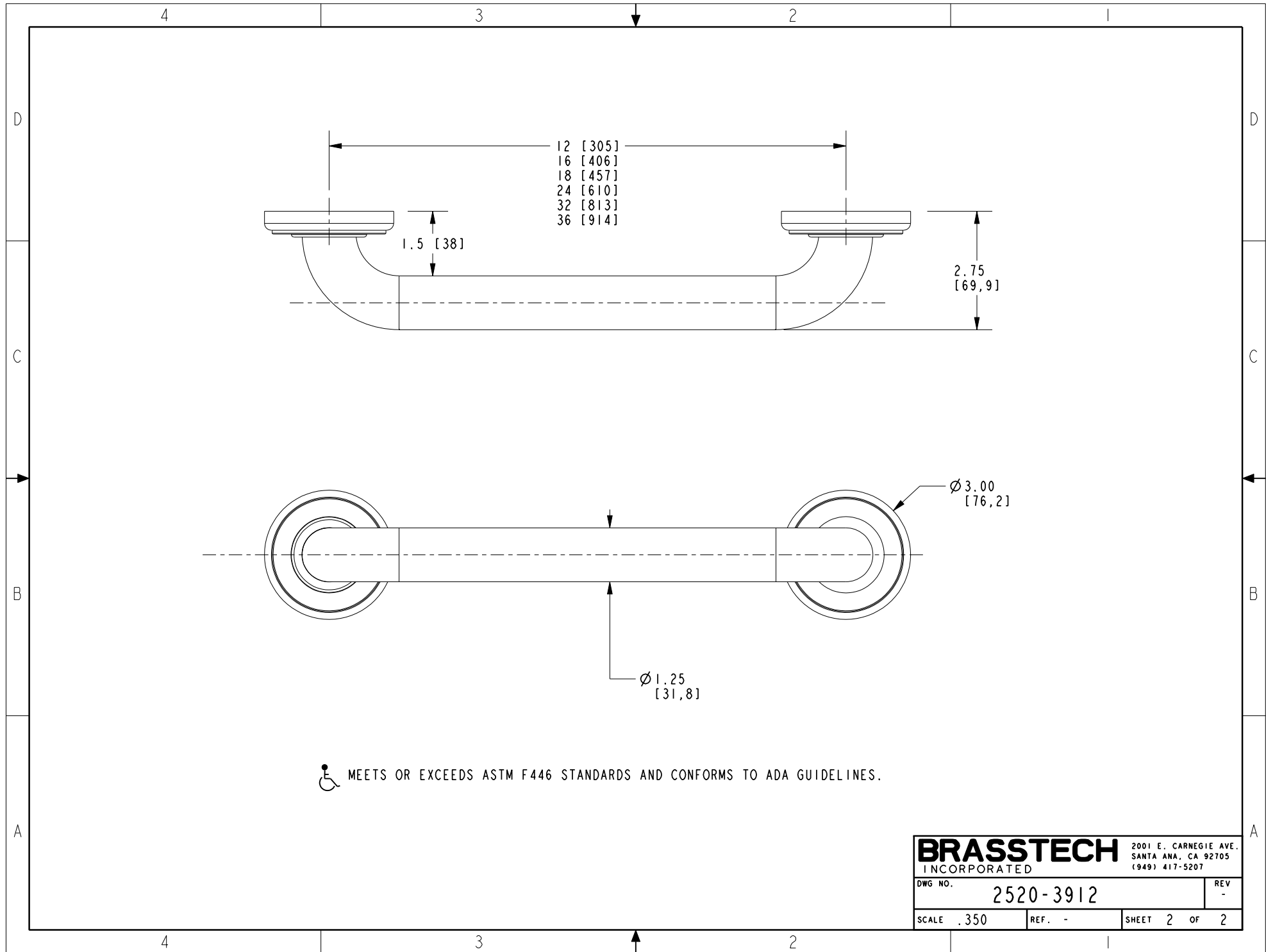
BRASSTECH 2001 CARNEGIE AVE.
 INCORPORATED SANTA ANA, CA 92705
 (949) 417-5207

12" CURVED GRAB BAR ASSEMBLY

DWG NO. **2520-3912** REV -

SCALE .375 REF. - SHEET 1 OF 2

-	-	EN-3279b	07/03/17	J.M
ZONE	REV	DESCRIPTION	DATE	APPROVED



BRASSTECH		2001 E. CARNEGIE AVE.
INCORPORATED		SANTA ANA, CA 92705
		(949) 417-5207
DWG NO.	2520-3912	REV -
SCALE .350	REF. -	SHEET 2 OF 2