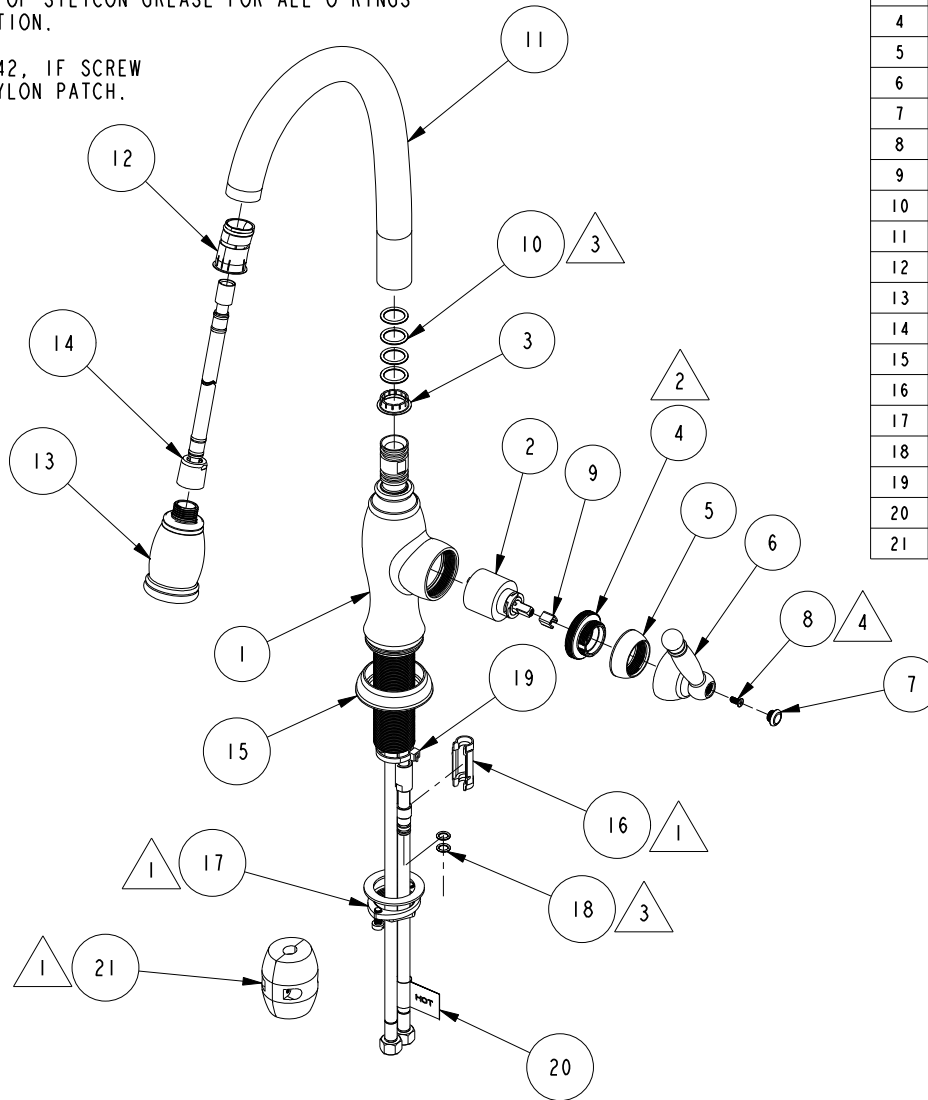


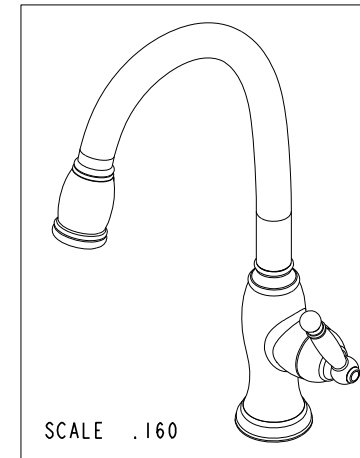
NOTES:

- 1. PUT THESE ITEMS IN SEPARATE PLASTIC BAGS.
- 2. TORQUE TO 7.5-8.5 LB-FT.
- 3. APPLY THIN COAT OF SILICON GREASE FOR ALL O-RINGS BEFORE INSTALLATION.
- 4. APPLY LOCTITE 242, IF SCREW DOES NOT HAVE NYLON PATCH.



BILL OF MATERIAL (CURRENT LEVEL)

ITEM	PT/ASSY	DESCRIPTION	TYPE	QTY.
1	2-779	MAIN BODY ASM, NADYA	ASSEMBLY	1
2	1-064	SINGLE LEVER CARTRIDGE	PART	1
3	91540	SWIVEL SLEEVE, BOTTOM	PART	1
4	11714	CARTRIDGE RETAINER	PART	1
5	11715	CARTRIDGE CAP	PART	1
6	2-745	HANDLE ASM, TRAD	ASSEMBLY	1
7	2-778	CAP ASM	ASSEMBLY	1
8	92035	SCRW, M4 X .7 X 10 PHL FLT HD SS	PART	1
9	91534	CARTRIDGE STEM INSERT	PART	1
10	91030	O-RING, #2- 115, EPDM, 65-75 DURO, NSF 61	PART	4
11	11839	SPOUT, TRAD PULL-DOWN	PART	1
12	91544	MAGNET DOCKING	ASSEMBLY	1
13	3-415	SPRAY HEAD, TRADITIONAL	ASSEMBLY	1
14	11877	HOSE, PULLDOWN SWIVEL	ASSEMBLY	1
15	2-777	BASE RING ASM	ASSEMBLY	1
16	91568	RETAINER CLIP	PART	1
17	1-256	MOUNTING KIT	ASSEMBLY	1
18	91255	O-RING, #2- 011, EPDM, 65-75 DURO, NSF-61	PART	2
19	91341	ZIP TIE	PART	1
20	98044	LABEL - HOT	PART	1
21	1-286	WEIGHT ASM	ASSEMBLY	1



F	EN-2500	04/22/13
E	EN-2443o	04/18/13
D	EN-2293	10/02/12
C	EN-2211	07/06/12
B	EN-2181	06/11/12
A	EN-1552-4A	09/08/11
REV	REV DESC	DATE

COPYRIGHT 2005 BRASSTECH, INC. THESE DRAWINGS AND THE DESIGNS DEPICTED HEREIN ARE THE PROPRIETARY PROPERTY OF BRASSTECH. ANY USE OR REPRODUCTION IS SUBJECT TO THE EXPRESS APPROVAL OF BRASSTECH. UNAUTHORIZED USE IS STRICTLY PROHIBITED. ALL RIGHTS RESERVED.

BRASSTECH
INCORPORATED

2001 E. CARNEGIE AVE.
SANTA ANA, CA 92705
(949) 417-5207

NADYA PULL DOWN - KITCHEN FAUCET

ASSY. NO.
2510-5103

SCALE .160

REF. -

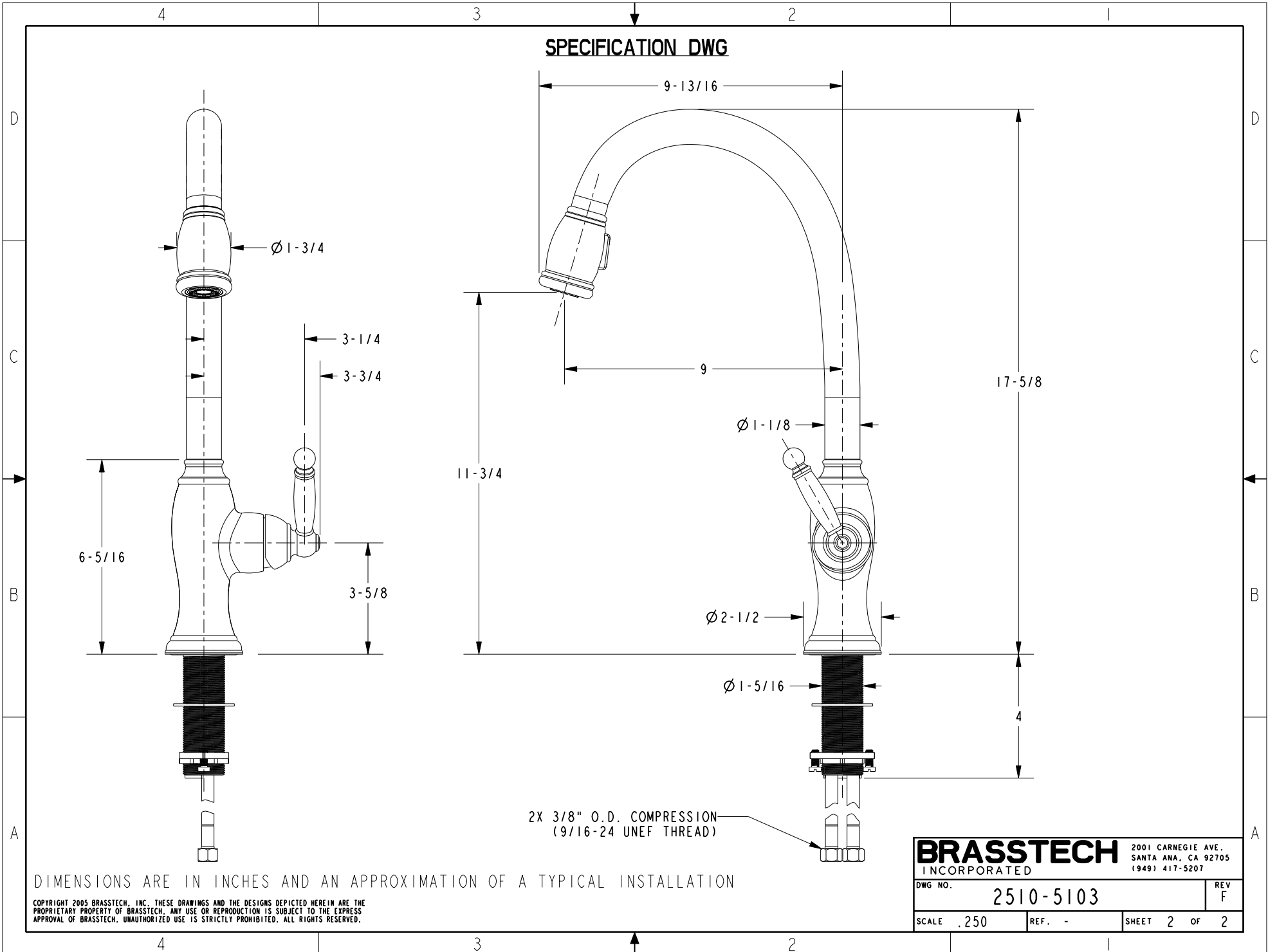
SHEET 1 OF 2

REV

REV DESC

DATE

SPECIFICATION DWG



2X 3/8" O.D. COMPRESSION
(9/16-24 UNEF THREAD)

DIMENSIONS ARE IN INCHES AND AN APPROXIMATION OF A TYPICAL INSTALLATION

COPYRIGHT 2005 BRASSTECH, INC. THESE DRAWINGS AND THE DESIGNS DEPICTED HEREIN ARE THE PROPRIETARY PROPERTY OF BRASSTECH. ANY USE OR REPRODUCTION IS SUBJECT TO THE EXPRESS APPROVAL OF BRASSTECH. UNAUTHORIZED USE IS STRICTLY PROHIBITED. ALL RIGHTS RESERVED.

BRASSTECH		2001 CARNEGIE AVE. SANTA ANA, CA 92705 (949) 417-5207	
INCORPORATED			
DWG NO.	2510-5103		REV F
SCALE	.250	REF.	-
		SHEET	2 OF 2