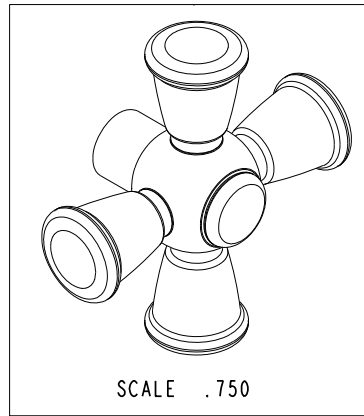


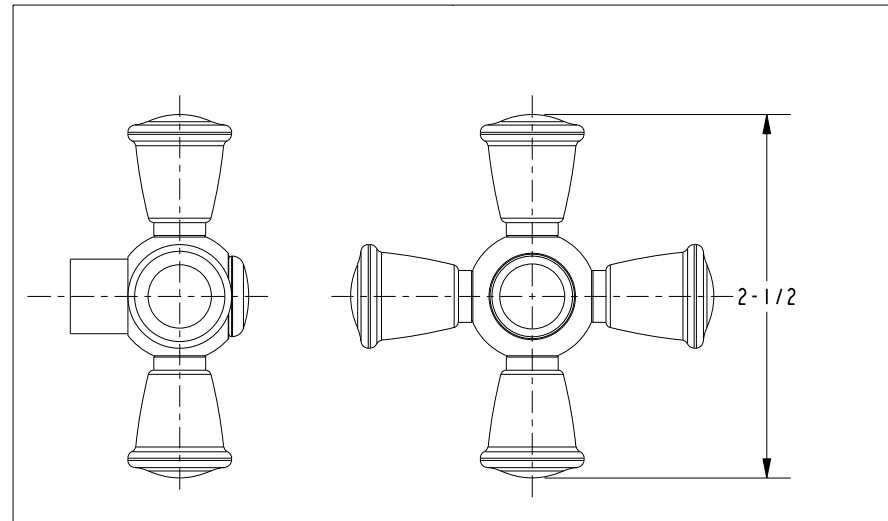
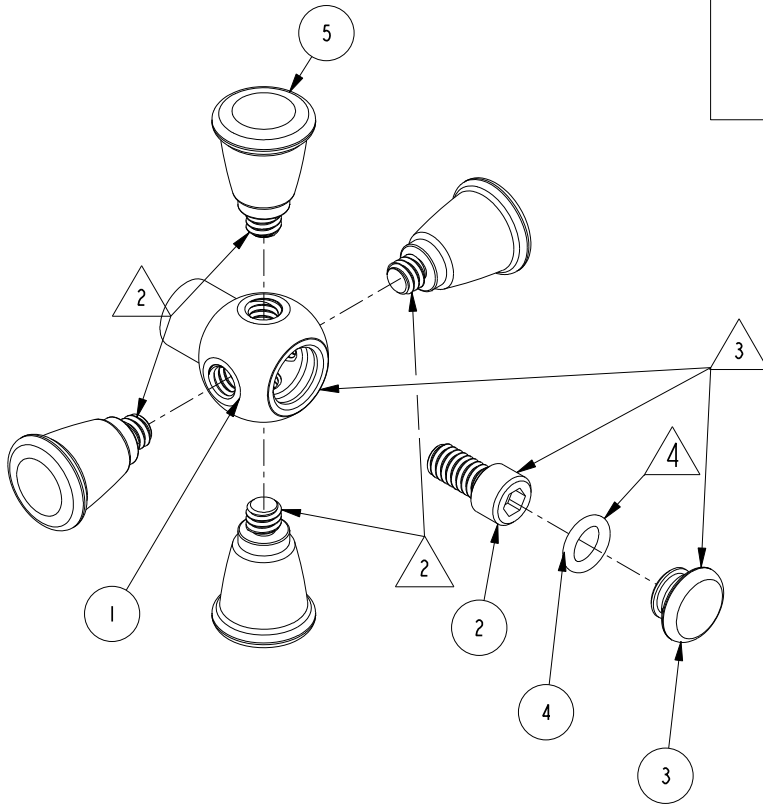
NOTES:

- (N1) 1. FIT / FORM / FUNCTION SHALL FOLLOW PS-E.008.
- (N2) 2 APPLY PERMANENT THREAD LOCKER (LOCTITE 680)
- (N3) 3 INSERT CAP, O-RING AND SCREW INTO HUB
- (N4) 4 APPLY A THIN FLIM OF DOW CORNING III SILICONE COMPOUND



BILL OF MATERIAL (CURRENT LEVEL)

ITEM	PT/ASSY	DESCRIPTION	TYPE	QTY.
1	11645	HUB, CROSS HANDLE THERMO	PART	1
2	92141	SCREW, CAP HD 1/4-20 X 1/2	PART	1
3	11588	HANDLE CAP	PART	1
4	91158	O-RING, 2 X 7MM ID, EPDM, 65-75 DURO	PART	1
5	11593	SPOKE HANDLE	PART	4



TESTING	-	-	-	UNITS ARE: INCHES [MM]
ASSEMBLY	-	-	-	TOLERANCES ARE:
PLATING	-	-	-	FRACTIONS DECIMALS ANGLES
POLISHING	-	-	-	±1/16" .X ±.1 [2,5] ±1°
MACHINING	-	-	-	.XX ±.06 [1,3]
TOOLING FIXTURE #	-	-	-	(X.XXX) DENOTES CRITICAL DIMS.
				ALL THREADS ARE CRITICAL
				DRAWN
				CHECKED
				APPROVED
				APPLICATION
				REMOVE ALL BURRS AND SHARP EDGES

BRASSTECH 2001 CARNEGIE AVE.
INCORPORATED SANTA ANA, CA 92705
(949) 417-5207

TANK LEVER ASSEMBLY-CROSS HANDLE

DWG NO. **2-644** REV B

SCALE .750 REF. - SHEET | OF |

ZONE	REV	DESCRIPTION	DATE	APPROVED
-	B	EN-2898	06/10/15	J.M.
-	A	EN-2539	06/07/13	-
-	-	EN-1266-5	04/23/10	-

COPYRIGHT 2005 BRASSTECH, INC. THESE DRAWINGS AND THE DESIGNS DEPICTED HEREIN ARE THE PROPRIETARY PROPERTY OF BRASSTECH. ANY USE OR REPRODUCTION IS SUBJECT TO THE EXPRESS APPROVAL OF BRASSTECH. UNAUTHORIZED USE IS STRICTLY PROHIBITED. ALL RIGHTS RESERVED.