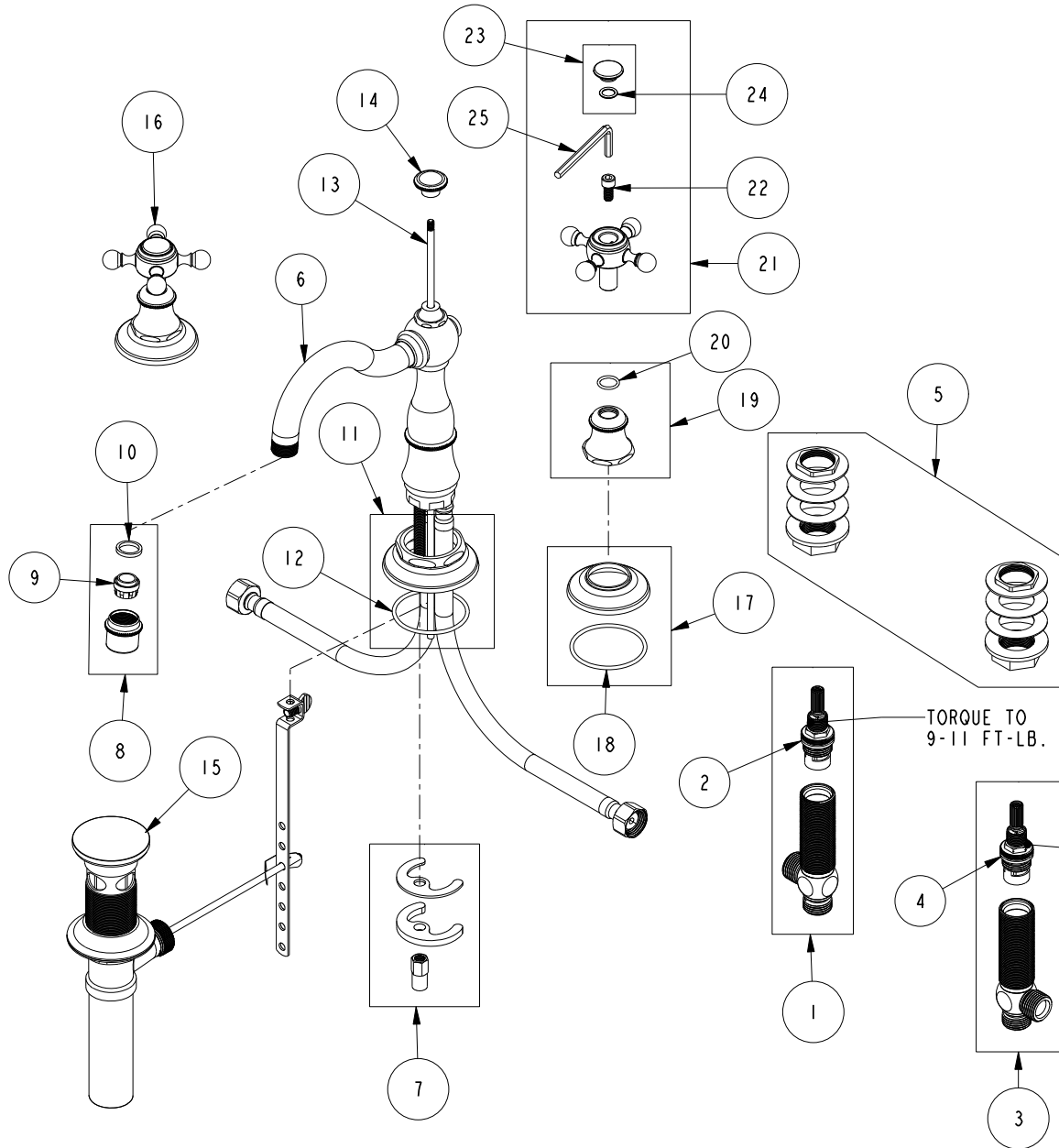


REPLACEMENT PARTS



ITEM	PT/ASSY	SPECIFY FINISH	DESCRIPTION
1	1-527		W/S CART/BODY ASM (HOT)
2	1-002		W/S CARTRIDGE - HOT
3	1-526		W/S CART/BODY ASM (COLD)
4	1-001		W/S CARTRIDGE - COLD
5	1-027		WIDE SPREAD MOUNTING HARDWARE
6	3-295	YES	W/S SPOUT ASM
7	1-491		SPOUT MOUNTING KIT
8	2-765	YES	AERATOR ASM
9	12403		AERATOR INSERT, Jr. SIZE, 1.2 GPM
10	91500		GSKT, .578 ID X .728 OD X .102 THK EPDM
11	2-535	YES	BASE RING, W/S SPOUT
12	91753		O-RING, # 2-136, EP, 50 DURO - GREY
13	30070	YES	POP-UP ROD
14	30225	YES	POPOP KNOB
15	325	YES	POP UP ASSEMBLY
16	3-322	YES	CROSS HANDLE ASSEMBLY
17	20-740	YES	ESCUTCHEON ASM
18	91753		O-RING, # 2-136, EP, 50 DURO - GREY
19	2-491	YES	HANDLE BONNET ASM
20	91019		O-RING, #2- 014, EPDM, 65-75 DURO, NSF 61
21	2-533	YES	CROSS HANDLE ASM
22	92141		SCREW, CAP HD 1/4-20 X 1/2
23	20-739	YES	HANDLE CAP ASM
24	91017		O-RING #2-012
25	92846		HEX KEY, 3/16" ALLOY STEEL

W/S SET W/ CROSS HANDLES
1760

REV F EN-4728 11/07/23 APPROVED RS

NEWPORT BRASS.

t: 949.417.5207 | www.newportbrass.com