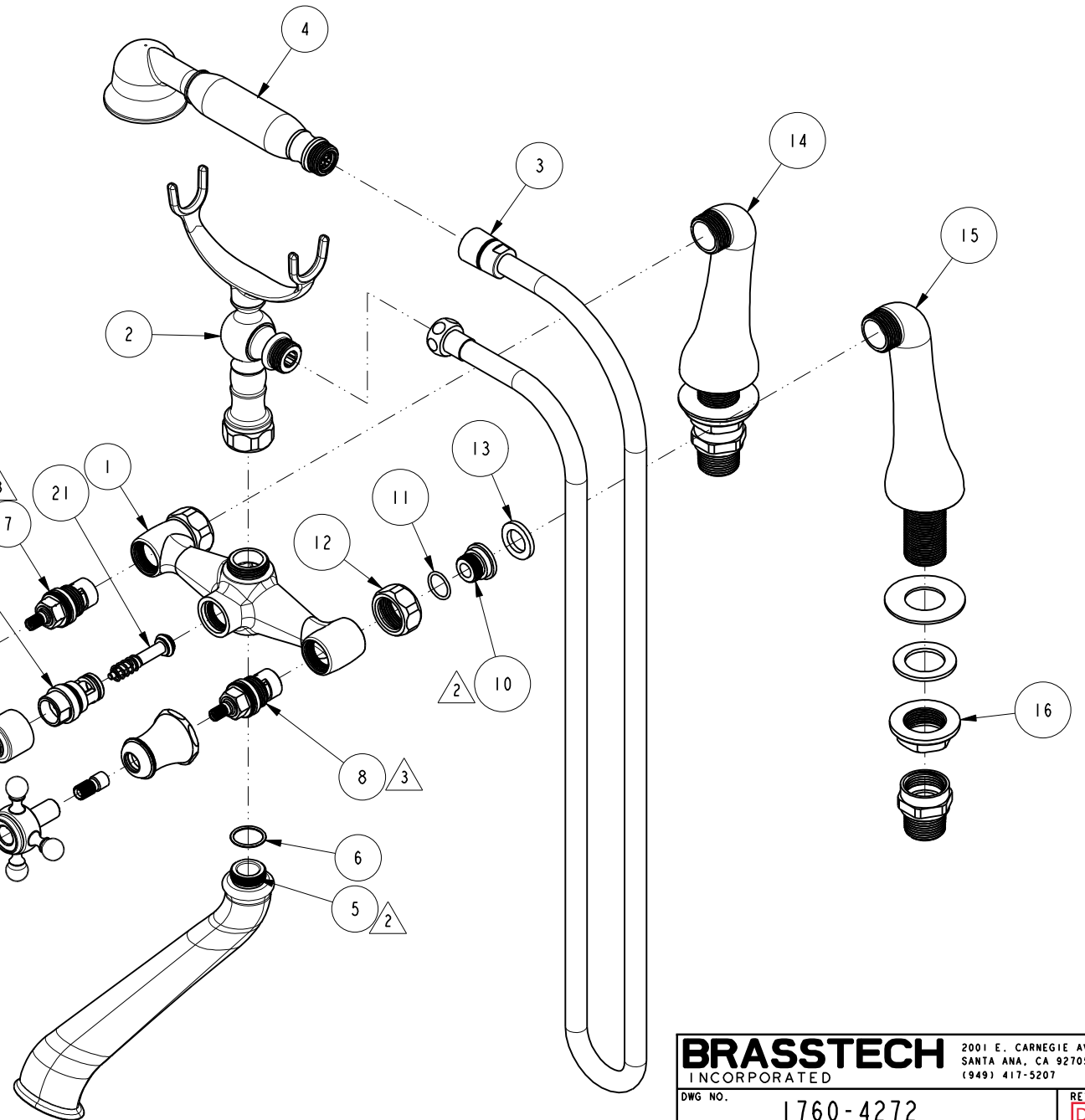
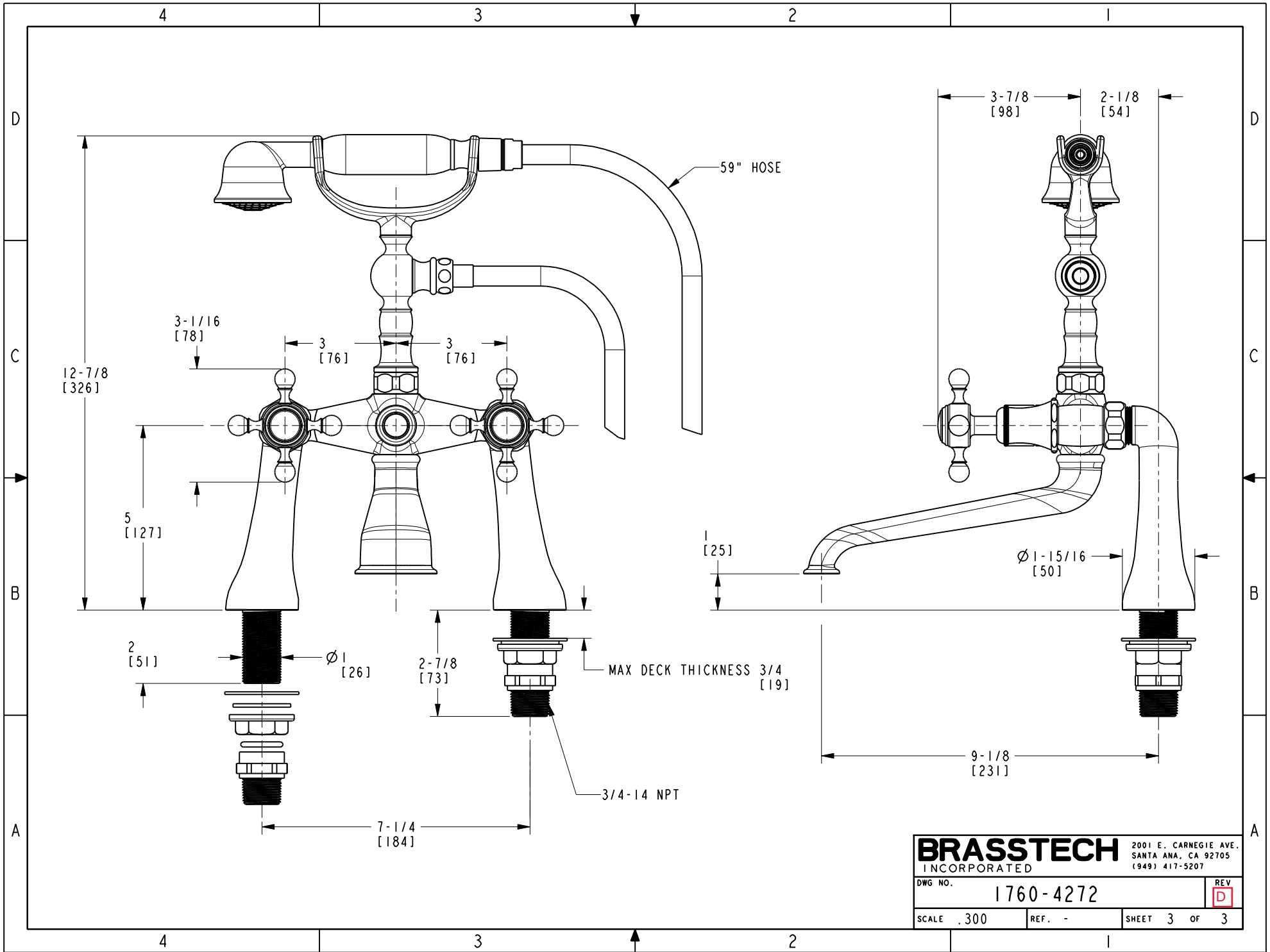


- 2. APPLY ADHESIVE LOCTITE 680.
- 3. TORQUE TO 15-20 FT-LB.
- 4. APPLY LOCTITE 242 IF SCREW DOES NOT HAVE NYLON PATCH.
- 5. TORQUE TO 11-14 FT-LB.

6. VISIBLE GAP BETWEEN THE SPOUT AND BODY IS ACCEPTABLE UP TO .070".



| | | | |
|------------------|-----------|--|----------|
| BRASSTECH | | 2001 E. CARNEGIE AVE. SANTA ANA, CA 92705 (949) 417-5207 | |
| DWG NO. | 1760-4272 | REV | D |
| SCALE .250 | REF. - | SHEET 2 | OF 3 |



| | | | |
|------------------|-----------|--|------|
| BRASSTECH | | 2001 E. CARNEGIE AVE. SANTA ANA, CA 92705 (949) 417-5207 | |
| DWG NO. | 1760-4272 | REV | D |
| SCALE .300 | REF. - | SHEET 3 | OF 3 |