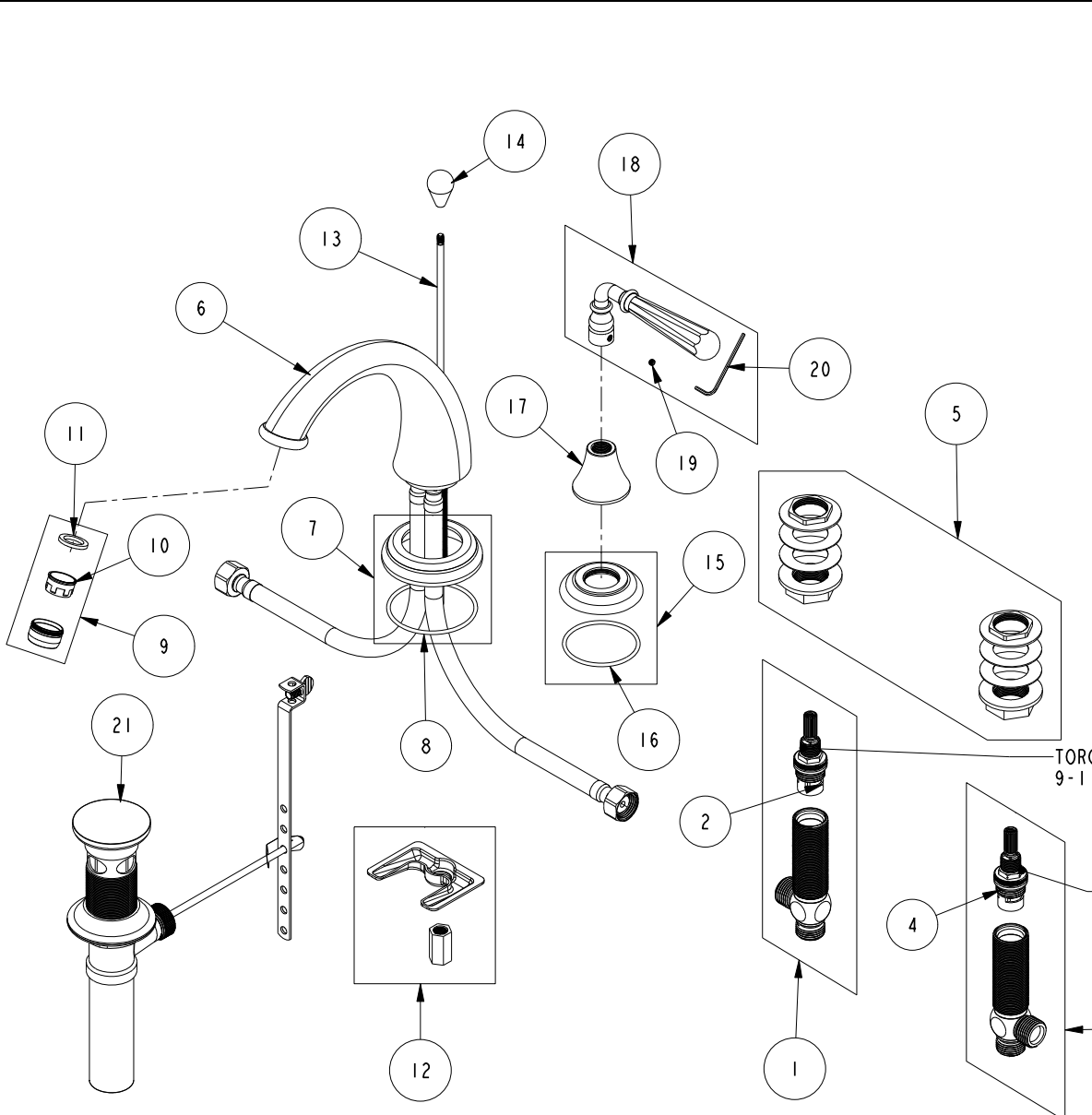


REPLACEMENT PARTS



ITEM	PT/ASSY	SPECIFY FINISH	DESCRIPTION
1	1-527		W/S CART/BODY ASM (HOT)
2	1-002		W/S CARTRIDGE - HOT
3	1-526		W/S CART/BODY ASM (COLD)
4	1-001		W/S CARTRIDGE - COLD
5	1-027		WIDE SPREAD MOUNTING HARDWARE
6	3-348	YES	W/S SPOUT ASM
7	20-728	YES	ESCUTCHEON ASM
8	91755		O-RING, #2-142, EPDM, 50 DURO - GREY
9	2-627	YES	AERATOR ASM
10	12404		AERATOR INSERT, STD SIZE, 1.2 GPM
11	91014		WSHR, .59 ID X .84 OD X .095 THK, FLT, RUBBER NSF 61
12	1-514		SPOUT MOUNTING KIT ASM
13	10288	YES	3/16" POP UP ROD
14	11181	YES	POP-UP KNOB
15	20-681	YES	ESCUTCHEON ASSEMBLY
16	91753		O-RING, # 2-136, EP, 50 DURO - GREY
17	10095	YES	ESCUTCHEON, 900 SERIES
18	2-470	YES	LEVER HANDLE ASM W/8 FLATS
19	92000		SCREW 8 - 32 X 1/8 SS
20	10192		HEX KEY TOOL, #8 5/64
21	325	YES	POP UP ASSEMBLY

TORQUE TO 9-11 FT-LB.

TORQUE TO 9-11 FT-LB.

WIDESPREAD FAUCET ASM
1740

REV H EN-4728 10/23/23 APPROVED RS

NEWPORT BRASS.

t: 949.417.5207 | www.newportbrass.com